

Contact our HS2 Helpdesk team on **08081 434 434**

HS2 Update

Birmingham | Autumn 2024

High Speed Two (HS2) is the new high speed railway for Britain. This update will provide you with key information and news on HS2 work between Curzon and Bromford.

The city's skyline grows with Curzon Viaducts

The 150-metre-long Curzon No.2 Viaduct will form part of the Curzon Street Approach into the new Station. This will make the 25-metre-high truss the tallest structure in the sequence of viaducts and structures and will create a new icon across the city's skyline.

The viaducts which are being built by Balfour Beatty Vinci (BBV), involve a team of more than 250 people, including engineering apprentices, steel welders, steel fixers, and joiners.

Once complete, the Curzon Viaducts will serve as the gateway to Birmingham as high-speed trains travel in and out of the city. The trains will cross the truss bridge to leave the city towards HS2's Washwood Heath Depot. The site, located northeast of Birmingham City Centre, will maintain, service, and store HS2 trains when not in use, generating over 500 long-term jobs for local people.



Curzon 2 viaduct piers either side of the existing railway

Upcoming works

For more information about upcoming works in Birmingham, please click [here](#) to view our Birmingham Autumn Construction Look-Ahead or scan the QR code below.



Aston Church Road Bridge push

The new Aston Church Road bridge was recently moved over the existing Birmingham to Derby railway line. It will sit above the new HS2 tracks as high-speed trains travel in and out of Birmingham. The bridge is 84 metres long, 21 metres wide and weighs 1,600 tonnes.

The bridge provides an upgraded, safer section of Aston Church Road including cycleways, which connects Saltley, Washwood Heath and Nechells in the north-east of the city. The bridge push was supported by heavy lifting engineering expert Mammoet and designed by a Design Joint Venture of Mott MacDonald and Systra.



Click [here](#) or scan the QR code to watch the bridge being moved into its final position.



The bridge sits on three structures – an abutment to the West of the existing rail tracks, a pier consisting of two columns on the East of the existing tracks, and an abutment to the East of the pier.

Over a period of 14 months, the original Aston Church Road bridge will be demolished to create the extra space needed for the new high-speed trains to pass through. Works will get underway to connect the new bridge to the existing road network.



84 metre Aston Church Road bridge moved into place in five hours

Aston Church Road - road closure



As we build the new high speed railway line in Birmingham, we need to demolish and rebuild the existing overbridge on Aston Church Road as it does not currently provide enough space for the new HS2 trains to pass underneath.

To rebuild the bridge, we will need to close Aston Church Road for approximately 14 months.

- A full road closure of a section of Aston Church Road will be closed Saturday 5 October 2024 – Monday 1 December 2025.
- To complete preparation works for the closure we will also need to close the A47 on Saturday 5 October and Sunday 6 October from 10.00pm to 6.00am.

To keep traffic moving in the area cars will be diverted along A47 Heartlands Parkway, Saltley Viaduct and Washwood Heath Road. Access to businesses and properties will be maintained.

A pedestrian route will be shared with communities ahead of the closure. There are no impacts to bus routes.

We would advise road users to plan their journeys in advance. Where possible we would advise road users to consider the timings of their journeys to avoid peak traffic hours.

For more information about the diversion routes, please click [here](#) or visit [Aston-Church-Road-Closure-October-2024-1.pdf](#) (hs2.org.uk)

Aston Church Road information events

Ward End Fire Station

23 September 2024

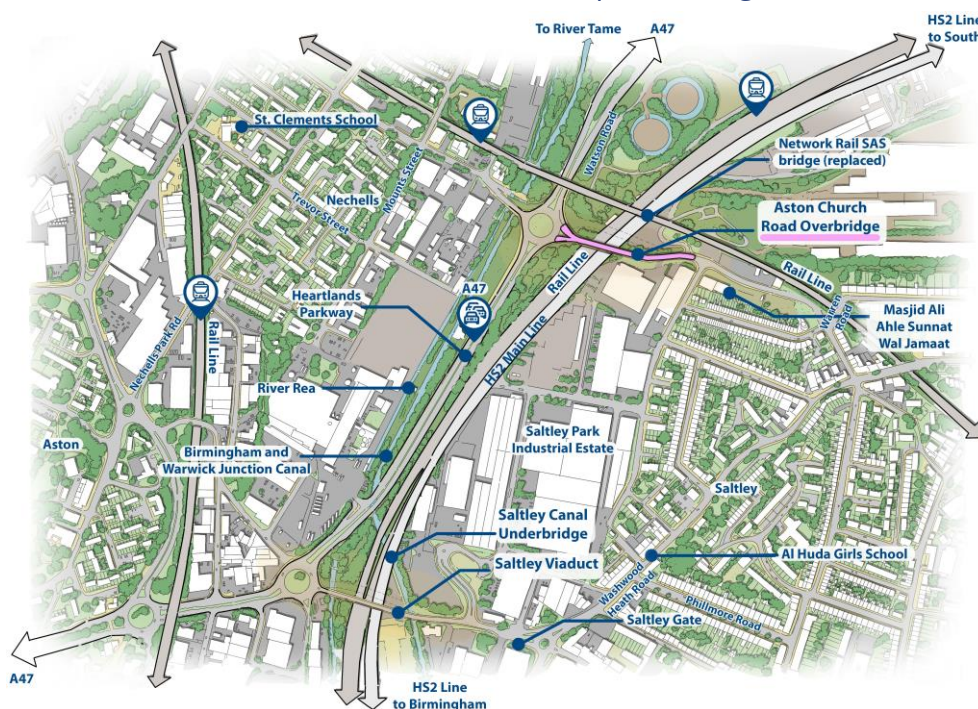
2-7pm

The Fort Shopping Park

26 September 2024

12-6pm

For more information on these events, please visit hs2.org.uk/events or scan the QR code below.



Map showing the Aston Church Overbridge

Spotlight.... Design

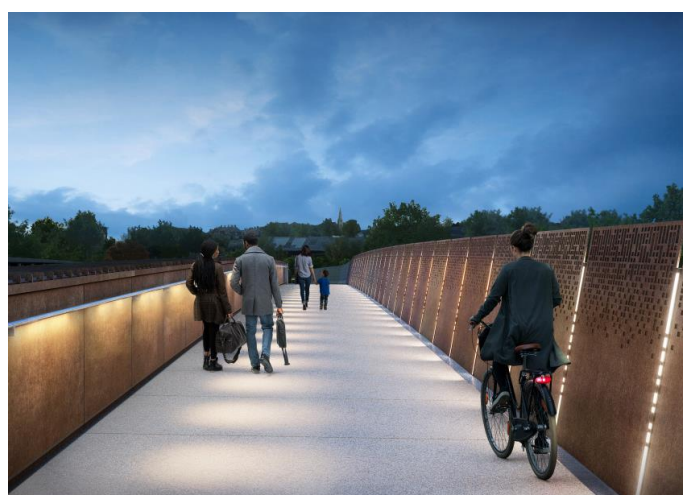
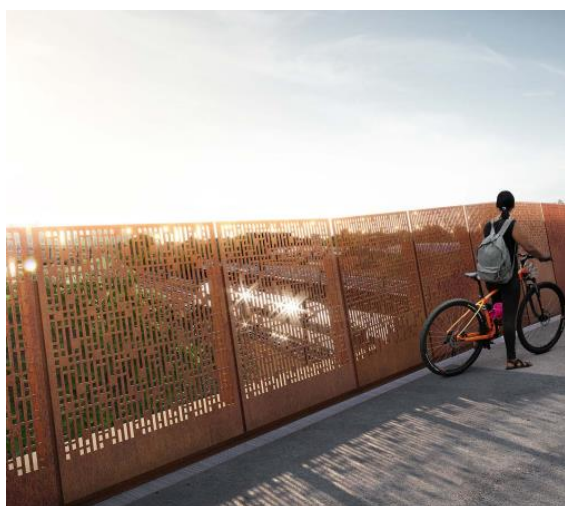
Nick McGough, Project Director at Weston Williamson + Partners and lead architect for BBV Design Joint Venture discusses some of the design and innovation decisions for the Aston Church Overbridge and Saltley Viaduct based.

Q. Nick, when designing this bridge, how did you work with local residents in the design process?

A. It's fantastic to see this bridge moved into position. We've worked closely with the local community to incorporate feedback on design elements, which will enhance the experience for people using the bridge.

Q. Can you discuss any innovative techniques or technologies used in the design of this bridge?

A. The integrated lighting system is particularly innovative and reduces urban light pollution in a way which is sympathetic to local wildlife whilst providing enhanced light levels that will help make the bridge attractive to both pedestrians and cyclists.



An architect's impression of Aston Church Bridge

Washwood Heath update

The Washwood Heath maintenance depot and National Integrated Control Centre will soon be completed.

The earthworks for the depot will be completed this autumn, marking the end of BBV's work on this area. The site will be handed over in two phases: 80% in mid-September and the rest by the end of the year. This will reduce noise, vibration, and dust disturbances in the area. Dust suppression measures are in place to minimise impacts on the community.

Station handover paves the way for the next construction phase of Curzon Street Station

The Curzon Street Station construction reached a milestone in July as land was handed over from BBV to HS2's partner, Mace Dragados (MDJV).

MDJV began major earthworks earlier this year to prepare the 25-acre site for piling and foundation works as they progress towards completing the



Formal handover of land under Curzon no. 3 Viaduct station. This transfer marks a significant moment for both project teams and signals increased activity as construction of the station moves forward.

BBV have been working adjacent to the station site for the past two years on the foundations and construction of the one-mile series of five connected viaducts that will carry HS2 trains from the west portal of the Bromford tunnel at Washwood Heath into the station.

As trains approach the station, they will travel across the fifth and final viaduct – Curzon no. 3 – which spans 65 metres at its widest point as the structure opens from a single deck into four.

'Bellingham' Bridge

Curzon 2 Bridge (nicknamed by staff working on its construction as 'Bellingham' Bridge), has been named after England footballer Jude Bellingham, who was born in Stourbridge. Construction of four giant piers for Curzon 2 in Birmingham have been successfully completed. The bridge is part of a series of viaducts that will allow high-speed trains to travel in and out of the city.

The construction of the piers began in Autumn 2023 and each one now stands at 16 meters tall. The deck and curved truss, made of weathering steel, are currently being assembled and are expected to be completed by next Spring. The entire structure weighs over 4,000 tonnes and will be slid into place over 12 days in the Summer of 2025.



An architect's impression image of the Curzon No.2

The bridge will feature a unique light installation by British artist Liz West called Out of the Blue. This installation will use dynamic colours to frame views of the city and create a striking addition to the skyline.

Did you know?

The newly constructed piers of then Bellingham Bridge are 16 metres tall. That's the equivalent of almost four stacked double decker busses.

Community Investment

HS2's Community Investment programme enables us to support those communities most impacted by our works.



Washwood Heath Academy



School pupils engaging in road safety

Young pupils at Washwood Heath Academy were treated to a Science Technology Engineering Mathematics (STEM) Road Safety workshop. Tarmac who also attended the session showcased their first fully electric sustainable cement mixer. The children were shown how difficult it can be for a plant/HGV driver to see pedestrians as well as the dangerous sounds to be aware of.

The workshop proved to be beneficial in educating the primary school children on the importance of being safe on the road, what to do and what not to do when seeing large plant/lorries on the road, what to do when crossing the road, what to listen out for and what to do at traffic light to keep themselves safe.

LoveBrum's 'Hidden Heroes'

New hoardings around our Curzon Street Station construction site display Love Brum's 'Hidden Hero's' and their charities. The campaign highlights the work being carried out to make a difference to people's lives and encourages everyone to support these valuable causes. The 50-metre-long section of hoardings display our commitment to support and promote local charities in the region. Come and take a look next time you're in the area.



Love Brum hoardings around Curzon Street Station

Mary Ann reaches her halfway point



The HS2 and BBV Bromford Tunnel team with Liam Byrne MP

The 125- metre-long Tunnel Boring Machine (TBM); Mary Ann reached the halfway point through her Bromford Tunnel bore on August 28 2024.

The 124-metre-long machine has already excavated and built 1.75 miles of tunnel, with the help of expert tunnelling teams from Tunnelcraft and Rorcon. These teams, including ten apprentices from the local area, have been working tirelessly in shifts to operate the TBM. A total of 20,797 concrete segments will be used to form 2,971 concrete rings in the tunnel. To read more about this exciting milestone please click [here](#)

Engaging with local communities



We know that planning and building the railway disrupts the lives of local people. We will always try to do the right thing and reduce disruption as much as we can.

Our specialists work across each section of the route and will keep you informed. They will also respond to any question you may have.

Drop-in sessions are held regularly and provide important updates on the project. We encourage attendees to share feedback so we can understand the views of our communities.

We work closely with community groups and local authorities to find ways to mitigate any potential disruption caused by the construction of HS2.

Our teams also support community and school projects to benefit the areas where we work. These include giving back to communities by volunteering, fundraising, or providing materials, labour, or investment. Our helpdesk is open 24/7 – ring us on 08081 434 434 if you would like to discuss an idea with our team.



Keep up to date on HS2 activity in your area

To receive notifications of our upcoming activity, sign up for email notifications:

<https://engagement.hs2.org.uk/join-mailing-list/>

To view more detail on what work is happening near you, visit our interactive map:

www.hs2.org.uk/in-your-area/map

Find out what engagement events are coming up in your area at:

www.hs2.org.uk/events

Tell us what you think

Thank you for taking the time to read this update. We invite you to complete our short survey. Your answers will be anonymous and will help us in improving these updates.

Take the survey >



Follow us



Keeping you informed

We are committed to keeping you informed about work on HS2. This includes ensuring you know what to expect and when to expect it, as well as how we can help you.

The Residents' Commissioner

The independent Residents' Commissioner oversees and monitors our commitments to you.

The commissioner's reports and our responses can be found at www.gov.uk/government/collections/hs2-ltd-residents-commissioner

The Residents' Commissioner makes sure we fulfil the commitments in the HS2 Community Engagement Strategy (<https://bit.ly/3oOA25j>).

The Residents' Commissioner can be contacted on: residentscommissioner@hs2.org.uk

Construction Commissioner

The independent Construction Commissioner regularly meets our Chief Executive Officer to raise any concerns or emerging trends across HS2.

The Construction Commissioner's role has been developed to monitor the way we manage and respond to construction complaints.

The commissioner mediates on disputes about construction, involving individuals and organisations, that we can't resolve. The commissioner advises members of the public about how to make a complaint about construction.

The Construction Commissioner can be contacted on: complaints@hs2-cc.org.uk

Property and compensation

You can find out about HS2 and properties along the route by visiting:

www.gov.uk/government/collections/hs2-property

Find out if you can claim compensation at:

www.gov.uk/claim-compensation-if-affected-by-hs2

Holding us to account

If you are unhappy for any reason you can make a complaint by contacting the HS2 Helpdesk. For more details on our complaints process, please visit:

www.hs2.org.uk/in-your-area/contact-us/how-to-complain/

Contact us

Contact our HS2 Helpdesk team all day, every day of the year on:

 Freephone **08081 434 434**

 Minicom **08081 456 472**

 Email **HS2enquiries@hs2.org.uk**

Write to:

FREEPOST

HS2 Community Engagement

Website **www.hs2.org.uk**

To keep up to date with what is happening in your local area, visit: **www.HS2inyourarea.co.uk**

Please contact us if you'd like a free copy of this document in large print, Braille, audio or 'easy read' format. You can also contact us for help and information in a different language.

HS2 Ltd is committed to protecting personal information. If you wish to know more about how we use your personal information please see our Privacy Notice: <https://www.gov.uk/government/publications/high-speed-two-ltd-privacy-notice>

Reference number: HS2-MW-EK-Ph1-Ar-No-N1-Traf-08-21/08/2024

High Speed Two (HS2) Limited, registered in England and Wales.

Registered office: Two Snowhill, Snow Hill Queensway, Birmingham B4 6GA.

Company registration number: 06791686. VAT registration number: 888 8512