

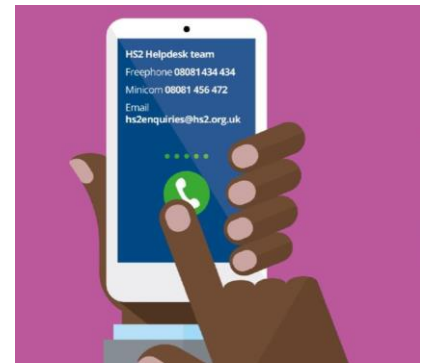
Contact our HS2 Helpdesk team on **08081 434 434**

HS2 Update

North Chilterns Area | Summer 2024



High Speed Two (HS2) is the new high speed railway for Britain. Should you have any questions or enquiries regarding our works, please contact the Helpdesk details of which can be found in this newsletter. We will be keeping our local website www.hs2inbucksandbox.co.uk up to date with information on our works in the local area. Join our local mailing lists (works updates): www.hs2.org.uk/local-mailing-list



What's inside this newsletter...

In this edition of the newsletter, we are looking at what we have done so far in 2024 and what is coming up:

- Roadworks and closure news
- 2024 key works update
- Online video links for the Small Dean viaduct and Wendover Dean viaduct
- Updates on our works
- New aerial footage
- Community project update
- Progress pictures
- Area map

Join us at our community events...

Over the year we run specific community events and drop-in sessions in our Mobile Visitors Centre and local village halls.

To find out where your next local event is taking place, please visit the events page on the HS2 website for the latest information.

www.hs2.org.uk/events



What's happening in your area?

Update of continuing works from August 2024 – November 2024

Over the next few months you can expect:

- A413 off-peak lane closures
- Rocky Lane underbridge construction
- Wendover Green Tunnel earthworks
- Small Dean viaduct pier construction
- Nash Lee overbridge construction
- Bacombe Lane link road construction
- Bowood Lane overbridge construction
- TLE2 overbridge construction



Traffic management requirements

Below you can see a summary of what to expect in the next couple of months in your area, further information will be communicated via email and the [HS2 website \(www.hs2.org.uk/route-map\)](http://www.hs2.org.uk/route-map) and you can also come and see us at our events.

Location	Works	Traffic Management
Ellesborough Road, Wendover	UKPN cable removal from road	Three-way traffic lights at Ellesborough Road
Nash Lee Road, Wendover	Verge maintenance works	Lane closures with traffic management
A413 London Road, Small Dean	Small Dean Viaduct construction	Off-peak lane closures



2024 key works updates

A progress update for the two viaducts in the area

Small Dean viaduct



At the Small Dean viaduct, pier construction is almost completed as we undergo the second temporary realignment of the A413 London Road. In April, we were able to utilise the Easter weekend closure of the railway south of Aylesbury to complete critical work on the viaduct.



Take a look at the animated construction of the viaduct by scanning the QR code!

Wendover Dean viaduct



In May, we began the second stage of the Wendover Dean viaduct deck slide. The construction of this viaduct involves sliding half a kilometre of bridge deck into position and is expected to be completed by the end of this year. Across the fifty new viaducts in the HS2 project, the Wendover Dean viaduct has the longest deck slide. The first 90-metre deck section was pushed out in January, with the process taking around 10 hours. The final deck slide is scheduled for late Summer/Autumn.



Scan the QR code to see a video of the second Wendover Dean viaduct deck launch!

Updates on our works

Ellesborough Road, Wendover, temporary diversion

Ellesborough road is now open on the new alignment. In March, the team were able to construct and resurface the tie in points, installed safety barriers and work with our utility partners to redirect utilities. There will be traffic management on the new road until our utility partner is able to remove the high voltage cable embedded in concrete.



Opening of the temporary realignment of Ellesborough Road

A413 Phase 2 realignment and Small Dean viaduct Pier construction

The next phase of the works will see the A413 moved west once again to allow for construction of the last pier for the Small Dean viaduct. 6 out of 7 piers have been completed for the Small Dean viaduct. Pier 2, which will be closest to the road, is the last pier which will be completed after the second phase of the A413 realignment takes place (construction in July - August 2024). The new alignment is due to be live in late summer. The final phase of the realignment is expected to commence around summer 2025.

Abnormal load deliveries

The final abnormal loads for Wendover Dean viaduct were delivered in May, in preparation for the final deck slide of the viaduct in August. Abnormal load deliveries are expected to continue for the Small Dean viaduct in Autumn 2024.



Small Dean viaduct piers being transported

Nash Lee Road overbridge

The construction of the Nash Lee overbridge commenced this summer. Piling works for the overbridge will continue until August 2024. Further works in this area are set to continue in preparation of the realignment of Nash Lee Road in 2025.

Bacombe Lane Link Road

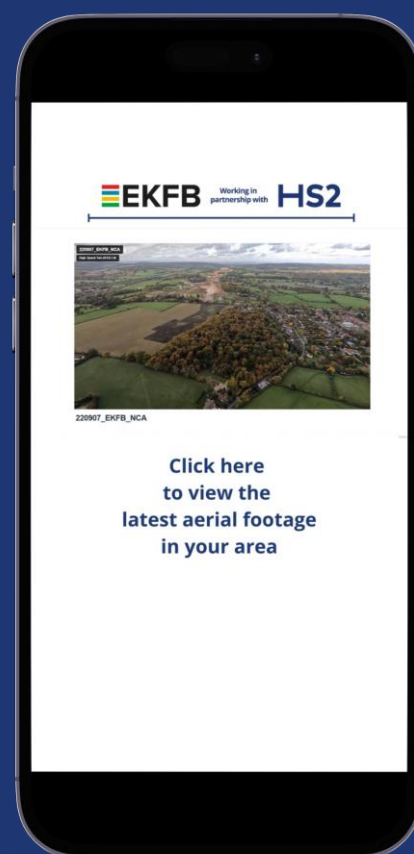
The link road construction is currently underway, to connect the newly built Bacombe Lane Link Road (constructed offline) to the existing Ellesborough Road. The road will be temporary realigned to allow for the construction of the Wendover green tunnel.

EKFB aerial footage

One of the best ways to see the progress we are making on site is from our aerial footage. If you scan the QR code on your phone below, it will allow you to view the latest of HS2 works in your area.

The footage gives an annotated overview of where different structures will be found once HS2 is complete, along with an update of how the landscaping is currently looking.

**Click here, scan me
or follow the link below!**



Community and Business funding

Are you a local community group or business that's looking for support from HS2?

The Community and Environment (CEF) and the Business and Local Economy Fund (BLEF) schemes will provide up to £40m of funding throughout the construction of HS2, supporting community-led projects.

The Funds also support initiatives that bring benefits to local communities, such as the provision of new community facilities or support for local heritage and culture.

You can find more information about eligibility and how to apply on the HS2 website.

Alternatively, you can get in touch with your local Community Engagement Team to find out more information and support.

www.hs2.org.uk/in-your-area/community-funding/



Community projects

Visit to Weston Turville Scouts

EKFB were delighted to get involved in a project with the 14th Vale of Aylesbury Cubs group to contribute towards earning their Community Impact badge. The Cubs learned how HS2 and archaeology can coexist and took on the challenge of competing against each other within their groups to build the tallest free-standing structure with limited resources.



Chesham Grammar School STEM morning

In June, the EKFB Community Engagement team were accompanied by operatives to Chesham Grammar School to host an interactive session for the year 8 students to learn about careers in STEM. The students learnt how our operatives got into the world of civil engineering followed by a competition to see who could build the tallest spaghetti tower.



Community project 3

EKFB was proud to support the Grand Opening of the Wendover towpath in June. We were delighted to contribute to the towpath signage and railings. EKFB organised a Teddy Bear's picnic activity and a nature trail for school children from the Wendover John Colet School. The geology team also brought fossils and talked about the interesting geological finds on the project.

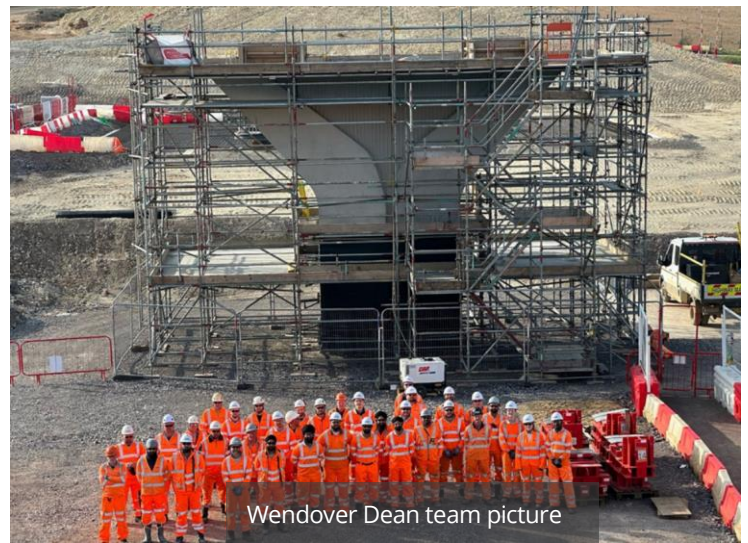


Contact our HS2 Helpdesk team on **08081 434 434**

Progress in pictures



Wendover Dean viaduct launch



Wendover Dean team picture



Small Dean viaduct progress



Construction of wing walls at Bowood Lane overbridge

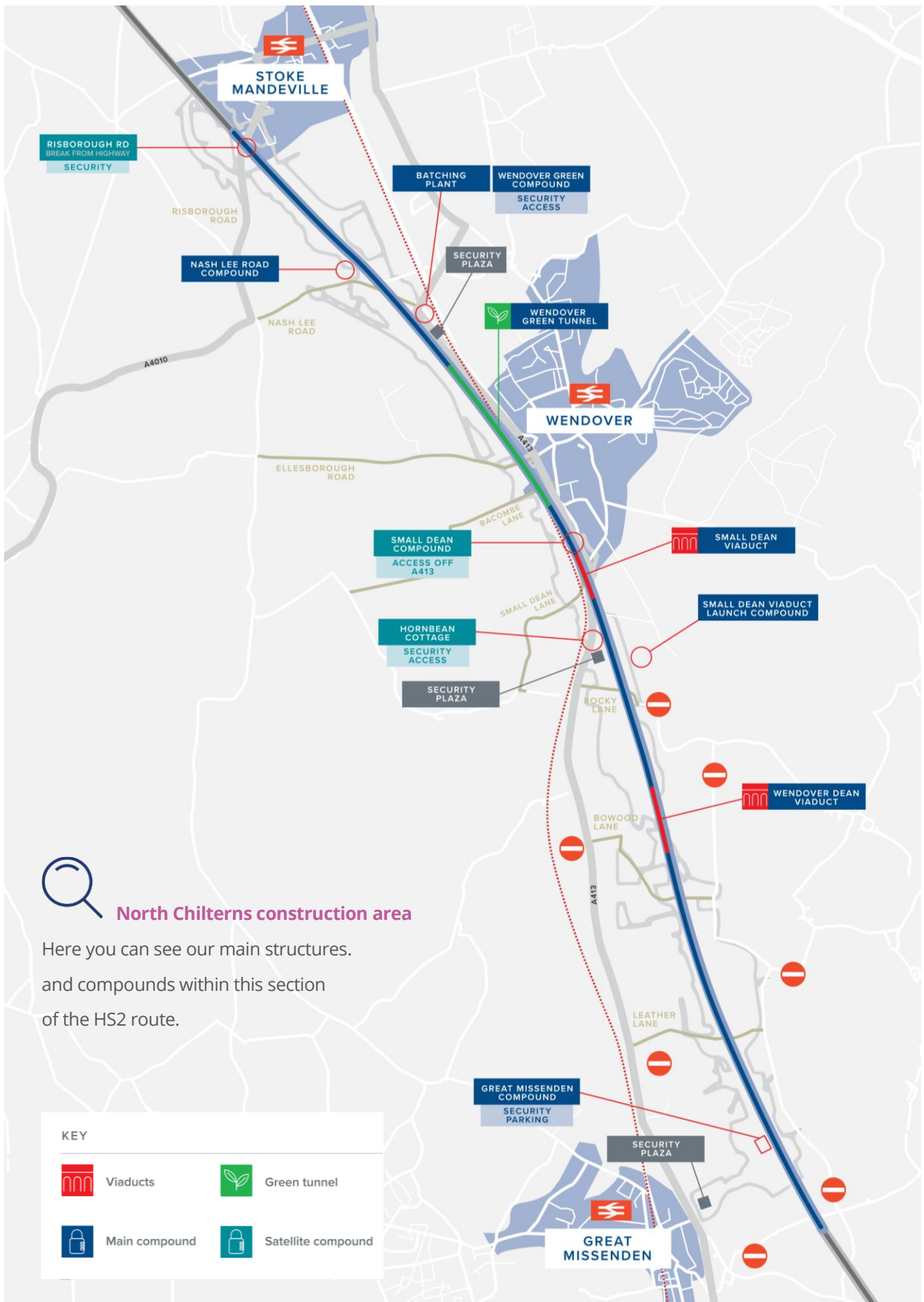


Small Dean viaduct abutments



TLE/2 overbridge - 9 pre-cast beams installed

North Chilterns Area map



North Chilterns construction area

Here you can see our main structures.
and compounds within this section
of the HS2 route.

Keeping you informed

We are committed to keeping you informed about work on HS2. This includes ensuring you know what to expect and when to expect it, as well as how we can help you.

The Residents' Commissioner

The independent Residents' Commissioner oversees and monitors our commitments to you.

The commissioner's reports and our responses can be found at www.gov.uk/government/collections/hs2-ltd-residents-commissioner

The Residents' Commissioner makes sure we fulfil the commitments in the HS2 Community Engagement Strategy (<https://bit.ly/3oOA25j>).

The Residents' Commissioner can be contacted on: residentscommissioner@hs2.org.uk

Construction Commissioner

The independent Construction Commissioner regularly meets our Chief Executive Officer to raise any concerns or emerging trends across HS2.

The Construction Commissioner's role has been developed to monitor the way we manage and respond to construction complaints.

The commissioner mediates on disputes about construction, involving individuals and organisations, that we can't resolve. The commissioner advises members of the public about how to make a complaint about construction.

The Construction Commissioner can be contacted on: complaints@hs2-cc.org.uk

Property and compensation

You can find out about HS2 and properties along the route by visiting:

www.gov.uk/government/collections/hs2-property

Find out if you can claim compensation at:

www.gov.uk/claim-compensation-if-affected-by-hs2

Holding us to account

If you are unhappy for any reason you can make a complaint by contacting the HS2 Helpdesk. For more details on our complaints process, please visit:

www.hs2.org.uk/in-your-area/contact-us/how-to-complain/


Reference number: HS2-MW-EK-Ph1-Ar-Ce-C1-CR-24-01/08/2024

High Speed Two (HS2) Limited, registered in England and Wales. Registered office: Two Snowhill, Snow Hill Queensway, Birmingham B4 6GA. Company registration number: 06791686. VAT registration number: 888 8512 56

Contact us

Contact our HS2 Helpdesk team all day, every day of the year on:

 Freephone **08081 434 434**

 Minicom **08081 456 472**

@ Email **HS2enquiries@hs2.org.uk**

Write to:

FREEPOST

HS2 Community Engagement

Website

To keep up to date with what is happening in your local area, visit:
www.HS2inyourarea.co.uk

Please contact us if you'd like a free copy of this document in large print, Braille, audio or 'easy read' format. You can also contact us for help and information in a different language.

HS2 Ltd is committed to protecting personal information. If you wish to know more about how we use your personal information please see our Privacy Notice:

<https://www.gov.uk/government/publications/high-speed-two-ltd-privacy-notice>