

Contact our HS2 Helpdesk team on **08081 434 434**

HS2 Update

Calvert | Summer 2024



High Speed Two (HS2) is the new high speed railway for Britain. If you have any questions or enquiries regarding our works, please contact our Helpdesk to find out more, details of which can be found in this newsletter. You can sign up for regular updates in your local area at www.hs2inyourarea.co.uk.

Take a look inside our latest Calvert Summer newsletter....

Our newsletters are an important way to update local communities on the progress of the HS2 project. This newsletter has been created specifically for the Calvert construction area (CA), located between Twyford and Quainton in Buckinghamshire. It includes the latest information on upcoming construction activities and expected timelines while also highlighting our efforts to support local communities.

In this edition of our newsletter, we will be looking at works coming up over the next few months and this will include:

- Construction update to include;
 - Perry Hill overbridge
 - Gawcott Road realignment
 - West Street overbridge
 - Addison Road overbridge
 - Calvert Road Green overbridge
 - Sheephouse Wood bat protection structure
 - Upcoming works in Quainton
- Ecology update
- Calvert Community Investment and;
- Map of key locations for HS2 in Calvert



Join us at our next drop in event and meet the team!

We will be visiting Buckingham Railway Centre in our Mobile Visitor Centre to give an update on our works in the local area.

Wednesday, 14 August
3 - 7pm

Carpark of
Buckinghamshire Railway
Centre, Station Road,
Aylesbury,
Buckinghamshire,
HP22 4BY

Details of all upcoming events are listed on the HS2 Events webpage.



Construction update



Perry Hill overbridge and Gawcott Road realignment

The earthworks for the new realigned Gawcott Road to the south have been completed which join the southern abutment to the new road. The north embankment is progressing well and by mid-July will be 70% complete.

Perry Hill bridge deck is complete, and all parapets, which form the bridge walls, have been installed successfully. During the autumn, the bridge deck will be waterproofed followed by the diversion of utilities over the structure. Gawcott Road will be diverted onto this new alignment in 2025 when you will be able to drive over the bridge!



Figure 1: West Street overbridge taken Summer 2024

Figure 2: The image below shows; Perry Hill overbridge, the temporary Gawcott Road realignment and the permanent Gawcott Road alignment which will be directed over Perry Hill bridge at the end of 2024.



West Street overbridge

The bridge foundations will be completed by late August. During the summer, the bridge walls will be constructed and the deck lifted into position by late September. Following the deck lift a concrete pour will create the bridge deck and the bridge walls will be completed by the end of 2024.

Construction update



Figure 3: The image above shows School Hill overbridge and the completed piling works. Calvert Jubilee Nature Reserve is in the far left, Calvert Green village is located towards the bottom left and School Hill EKFB compound positioned to the right.



Addison Road overbridge

Since Addison Road closed on 3rd June 2024, BT and Anglia Water have been working to programme to complete utilities works and connections which run under the East West Rail Line.

Alongside utilities, the team are progressing with the highways and drainage works and will complete the parapet installation. The parapets form the bridge walls. Addison Road is planned to be re-opened for the Towersey Festival which runs from 23-26th August. The road will re-close shortly after the event until drainage and highways works are completed.



Calvert Road, School Hill, green overbridge

Over one hundred 38m deep piles were completed at the start of July which will support the foundations for the bridge. During the summer and autumn, the foundations will be completed, creating a platform to build the main bridge structure. The bridge is planned to open in summer 2025. As per the request of the community the team have recently painted the hoarding leaf green to blend in with the surroundings.

Construction update



Sheephouse Wood Bat Protection structure

The Sheephouse Wood Bat Protection structure will run for around 1km alongside Sheephouse Wood. It will be up to 10m high and cover four railway lines which include two HS2 lines and two future lines for additional services.

The 56 hectare woodland is home to several different bat species, including the most northerly known colony of the rare Bechstein's bat. All bats are legally protected in the UK and the structure will allow bats to cross the line without being harmed by passing trains.

Throughout the summer, our teams will be carrying out concrete pours to construct bases and walls for some of the foundation works. This will be followed by the construction of a reinforced concrete slab which will support the tunnel arches. The steel reinforcement we have used on this structure, equates to 7500 tonnes, which weighs the same as 1500 African elephants!

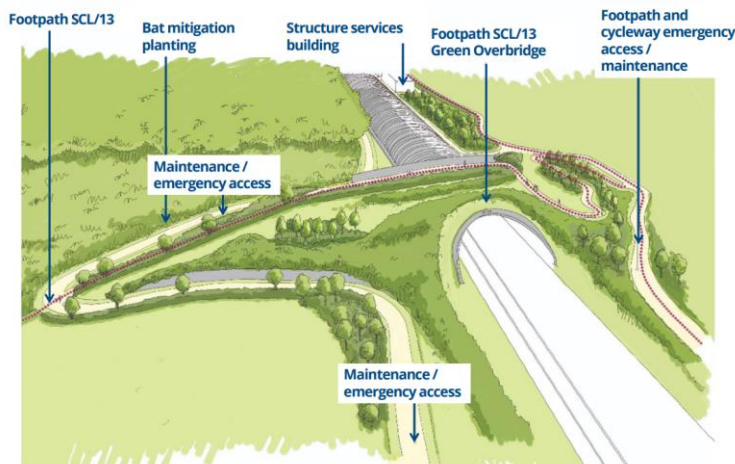


Figure 4; Artist impression drawing showing the northern portal of Sheephouse Wood Bat Protection structure.

We will be using a design called a BEBO arch. Its name is derived from BEBO Arch International AG, the engineering company that invented, and now licenses this type of construction. It consists of precast concrete segments and mesh inserts. This creates a light, smooth structure, capable of self-ventilation. Most importantly, it provides adequate shielding for bat flight paths.

Next year, we will begin the installation of the 380 precast concrete arches with a combined total of 870 precast elements to complete the structure.

At the north end of the Bat Structure there is a Green overbridge called SCL/13 which will allow pedestrians as well as wildlife to safely travel over the HS2 railway line, helping maintain connectivity with other footpaths and a proposed cycleway. During the summer, we are working on the foundations for the bridge and will start piling during autumn.

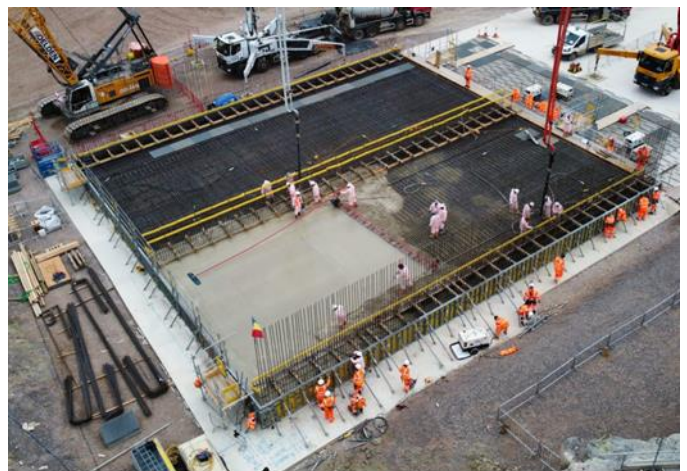


Figure 5; Concrete foundations progressing at a good pace at SCL/13 green overbridge.

Upcoming works in Quainton

- Fiddlers Field/Snake Lane closed at the start of January 2024 and will re-open on a new alignment in the spring of 2026. The closure is to allow construction of the new bridges across the HS2 line and Network Rail line. Initial activity will involve site clearance of the highway, removal of overhead cables with earthworks to follow.
- In July, UKPN removed the overhead power lines and diverted the existing power supply underground. This allows the structures to be constructed in the footprint of the removed cables.
- Piling works to build the foundations of the new HS2 bridge for the Station Road realignment will start in August with construction of the Network Rail bridge starting shortly after in September.

Works Impacting Station Road and Quainton Road;

- 29th July until 16th August, a section of Quainton Road will be closed to allow utility investigation works.
- 17th August until 27th October our works will continue offline so there will no impacts to the local road network.
- 28th October until 17th December, phased works on utilities and highways connections which will require a sequencing of both traffic management and road closures. The phased sequence is to ensure access to Quainton from A41 is maintained for as long as possible and to minimise the impact on the public highway and local community.

Please sign up to the HS2 mailing list, details on the back page, where you will be emailed a copy of every advanced works notice to inform you of upcoming works.

Ecology

It's the nesting season...

Some birds seem determined to build their nests in places that are rather inconvenient! The Ecology Team have several devices designed to deter birds from nesting in the wrong place, (scare kites, bird deterrents and dummy birds of prey) and these have been positioned around Calvert. However, the Jackdaws (very prominent in the Calvert area) are determined to find new ways to challenge us!

...and also breeding season for Great Crested Newts (GCN)

During this period our Ecology Team are currently trapping GCN using terrestrial trapping (which uses pitfall traps with floats), vegetation and a mammal ladder (long stick), as well as carpet tiles and reptile mats (tin or felt sheets). Where aquatic trapping is concerned, they use bottle traps. This is a 2-litre plastic bottle with the top cut off and inverted. A bamboo stick is placed through the bottle at an angle and partially submerged. This is carried out in order to remove the newts from the footprint of the works area to allow the programme to continue.

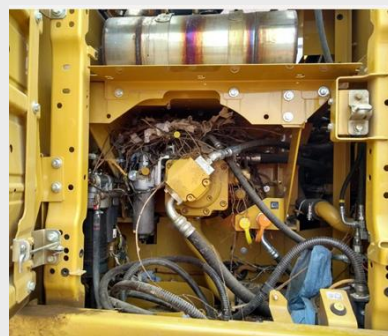


Figure 6: Top image shows a nesting bird in an engine. Bottom image is a pair of Great Crested Newt.

Community Investment

SEND Programme

Employability Programme for Furze Down School students

Our Skills, Employment & Education Coordinator, designed a five-week programme for students from a Special Educational Needs and Disability school in Buckingham to attend our West Street office.

Each week, a cohort of 15 learners took part in a variety of activities including 'Guess the Job Role', talks from our apprentices, and even the chance to try on PPE! Later in the programme members of EKFB staff conducted one to one mock interviews – this gave the students the chance to prepare for and experience an interview situation. This was invaluable experience for those now seeking college courses and work. Finally, they were able to attend a tour along the Calvert stretch to see our construction works.

'...what are we going to do with Tuesday mornings going forward? Visits to EKFB have quickly become something that both staff and students look forward to each week...'

The young learners engaged brilliantly with all activities, and we have received superb feedback. EKFB staff who have voluntarily given their time and made space in a busy schedule to support us have also found the experience to be extremely rewarding. We have had much unexpected and positive feedback from them. A double win!



Figure 7: Students showing off their certificates!



Figure 8: Students who completed the 5 week Special Educational Needs and Disability programme.



Figure 9: Site Safari Bingo.



Community Investment

Building bug hotels with North Marsden Cubs Group

EKFB Engagement and Ecology team supported a local scouts group in attaining their 'Community Impact Badge'. The visit aimed to enlighten the Beavers and Cubs about the wildlife we encounter along route of the new railway line, learn about the project within their local area, and understand the role our ecology team play in protecting our local habitats from being impacted by our works. We made bug hotels which the Cubs could take home to hang in open spaces.



Twyford Amateur Dramatics

EKFB donated a 20-foot second-hand shipping container to support the local community theatre in Twyford. It will provide wind and watertight storage for props, costumes and equipment ready for this year's much-loved Christmas Panto!

"Thank you so much. From the excitement among the backstage gang you would think it was Christmas. The company you found for us was excellent"-Rae Sloan,
Community Representative

Calvert litter pick

With the improvement of the weather recently, the Calvert team have been out into the local communities to do a litter pick. We filled four bin bags from Calvert Green, Twyford, Charndon and Steeple Claydon.

This is something we are hoping to arrange on a regular basis going forward so please let us know of any suggested areas of focus.



Growing with Communities

Just in time for the planting season, EKFB donated almost 2000 surplus saplings to local schools and community spaces across the area of Calvert.

These have been planted to enhance community spaces and have been gratefully received.

Community Investment



Steeple Claydon easter egg donation

Each year Cllr Frank Mahon organises an Easter Eggs delivery for the children in Steeple Claydon village to ensure each child receives an egg at Easter. This year, EKFB were delighted to have been able to donate all 500 Easter Eggs which 20 volunteers including MP Greg Smith hand delivered on Good Friday.

Calvert Bridge engraved bricks

When demolishing Calvert Bridge, the team managed to carefully remove some of the stamped bricks as per the request of the community.

These bricks have now been incorporated into the community garden at Calvert Green Village Hall.



EKFB gets decorative with Quanton Primary School eco-warriors

Lending a helping hand to our local community, EKFB spent the morning with the eco-warriors of Quanton C of E Primary School, to bring life into their school orchard using a variety of environmental and decorative pieces. The visit was aimed at supporting the students in the construction and design of their crafts, with our teams on hand to answer any questions they had about the project.

North Bucks Bike Ride

EKFB were delighted to be able to donate towards North Bucks Bike Ride for the second year running, which took place on 14th July and raised £8,500 for charity.

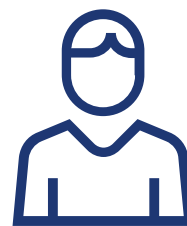
Our supply chain, Enterprise, supplied a flatbed truck free of charge to help support the event. This was used to collect and relocate various items of equipment for use at the start/ finish point.





What else is happening in your area?

www.hs2.org.uk



Keep up-to-date with your local HS2 community website

To find out more about what's happening in your area and receive regular email updates, you can sign up to our local community websites at: www.hs2inyourarea.co.uk.

Contact our HS2 Helpdesk team

Our team is here to listen and respond to your enquiry, complaint or feedback to help us be a good neighbour. You can contact our Helpdesk team all day, every day of the year on:

Freephone: **08081 434 434**

Minicom: **08081 456 472**

Email: hs2enquiries@hs2.org.uk



About our Community and Business Funds

We are offering two funds that are available to local communities and businesses between the West Midlands and London, to help with the disruption caused by our construction work. These are the Community and Environment Fund (CEF) and the Business and Local Economy Fund (BLEF).

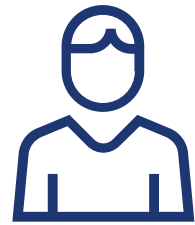
The CEF is designed to give communities the opportunity to share in the benefits of HS2. It is an allocated fund that communities are able to apply for, to help to support local projects that aim to improve their local area.

The BLEF is designed to support local economies that may be disrupted by the construction of HS2. BLEF grants are for local business support organisations and local authorities to help maintain business activity in local communities.

For more information about each of these funds, including how to apply, please visit: <https://www.groundwork.org.uk/hs2fun>



Keeping you informed



We are committed to keeping you informed about work on HS2. This includes ensuring you know what to expect and when to expect it, as well as how we can help.

Residents' Charter and Commissioner

The Residents' Charter is our promise to communicate as clearly as we possibly can with people who live along or near the HS2 route.

www.gov.uk/government/publications/hs2-residents-charter

We also have an independent Residents' Commissioner whose job is to make sure we keep to the promises we make in the Charter and to keep it under constant review. Find reports at:

www.gov.uk/government/collections/hs2-ltd-residents-commissioner

You can contact the Commissioner at:
residentscommissioner@hs2.org.uk

Construction Commissioner

The Construction Commissioner's role is to mediate and monitor the way in which HS2 Ltd manages and responds to construction complaints. You can contact the Construction Commissioner by emailing:
complaints@hs2-cc.org.uk

Property and compensation

You can find out all about HS2 and properties along the line of route by visiting:

www.gov.uk/government/collections/hs2-property

Find out if you're eligible for compensation at:

www.gov.uk/claim-compensation-if-affected-by-hs2

Holding us to account

If you are unhappy for any reason you can make a complaint by contacting our HS2 Helpdesk team. For more details on our complaints process, please visit our website:

www.hs2.org.uk/how-to-complain

Contact Us

Contact our HS2 Helpdesk team all day, every day of the year on:

 Freephone **08081 434 434**

 Minicom **08081 456 472**

@ Email **HS2enquiries@hs2.org.uk**

Write to:

FREEPOST

HS2 Community Engagement

Website **www.hs2.org.uk**

To keep up to date with what is happening in your local area, visit:
www.HS2inyourarea.co.uk

Please contact us if you'd like a free copy of this document in large print, Braille, audio or easy read. You can also contact us for help and information in a different language.

HS2 Ltd is committed to protecting personal information. If you wish to know more about how we use your personal information please see our Privacy Notice
<https://www.gov.uk/government/publications/high-speed-two-ltd-privacy-notice>

Reference number: HS2-MW-EK-Ph1-Ar-Ce-C1-Traf-21-15/07/2024

High Speed Two (HS2) Limited, registered in England and Wales.

Registered office: Two Snowhill, Snow Hill Queensway, Birmingham B4 6GA.

Company registration number: 06791686. VAT registration number: 888 8512 56