

HS2

ECRG Presentations & Slides Updated version

03 October 2024

Agenda

Time	Topic	Presenter
17:20	1. Welcome and Introductions	Chair
17:25	2. Minutes of the March meeting	Chair
17:30	3. Actions log	Chair
17:40	4. Questions received in advance of the meeting	Chair supported by HS2 team members
18:00	5. Government announcements since the last meeting	To note only
	6. Works lookahead	To note only
18:05	7. HS2 Update 7.1 Mace Dragados	Natalie Kirkwood to take any questions
	7.2 Network Rail On Network Works	Jonathan Cooke to take any questions

Agenda

Time	Topic	Presenter
	7.3 SCS	Neil Van Kervel, David Hannon and Amy Allen to take any questions
18:20	8. Community Questions/AOB	Chair
18:35	Meeting dates for 2024 Thursday 28 November	Chair

HS2

1. Welcome and introductions

David Demolder – Chair

HS2

2. Minutes of the last meeting

Chair

- To APPROVE the minutes of the July 2024 meeting

HS2

3. Actions Log

Chair

- To review the Actions Log noting
 - Updated responses
 - Items proposed to be closed

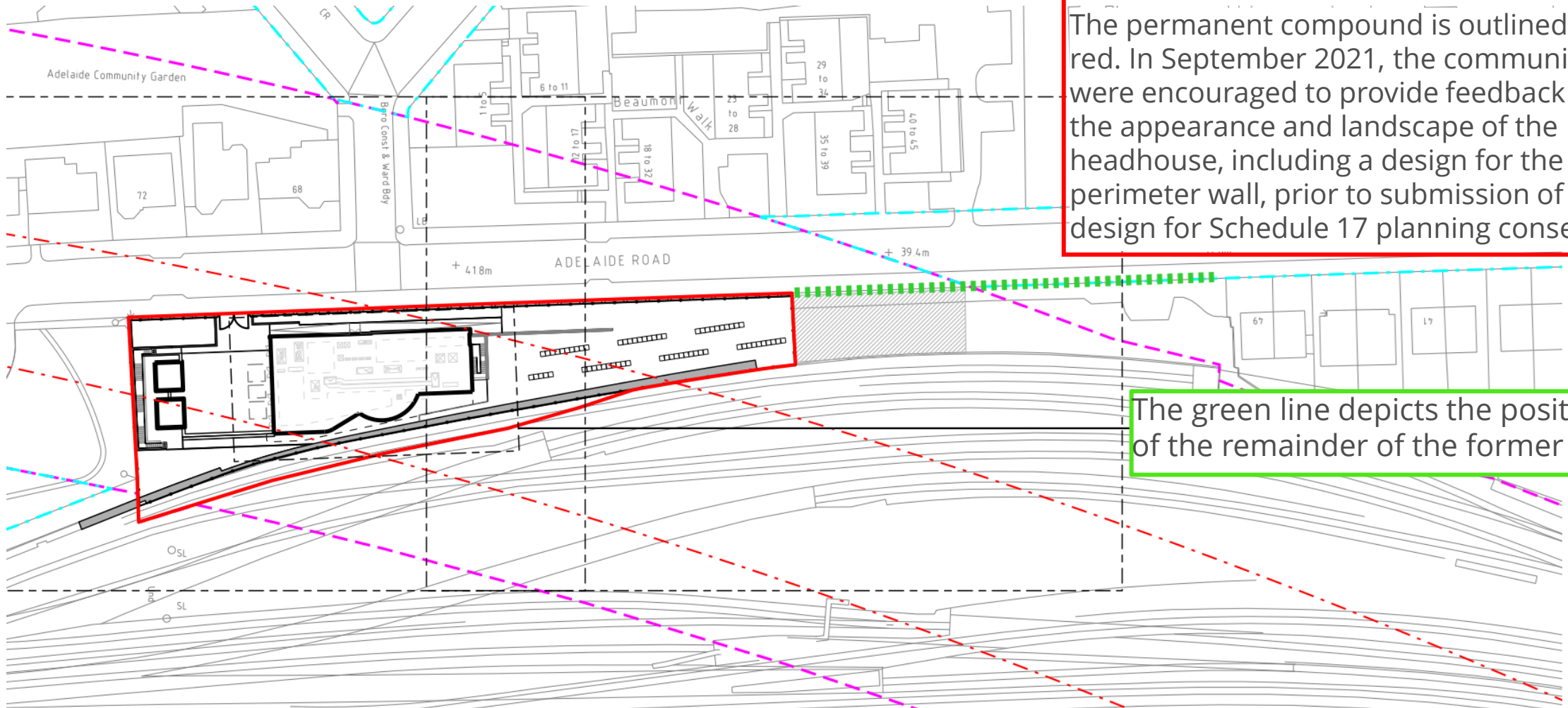
Action update: Adelaide Road Vent Shaft (ARVS) boundary wall



ARVS site context



ARVS HS2 permanent compound



The permanent compound is outlined in red. In September 2021, the community were encouraged to provide feedback on the appearance and landscape of the headhouse, including a design for the perimeter wall, prior to submission of the design for Schedule 17 planning consent

The green line depicts the position of the remainder of the former wall

Key Design Element engagement

Timeline of progress to Schedule 17 Plans & Specifications consent for ARVS Headhouse

2021

September 2021 - Public engagement for feedback on Headhouse future design

- Face to face engagement event at Swiss Cottage Library
- Virtual engagement events
- Online engagement boards
- Feedback survey

November 2021

- Virtual engagement events provided an overview of feedback received and how it would be considered in the future planning application
- It was confirmed the boundary wall design would be in a red brick
- Design to progress through pre-application meetings with Camden Council

2022

Ongoing meetings between SCS Design House, SCS / HS2 Town Planning and Camden Council took place throughout 2022, to review and discuss design amendments, ahead of planning consent application submission.

SCS were informed of responses made to the Local Authority following planning application submission

June 2023

Following submission of the Schedule 17 Plans & Specifications planning application, consent was granted by Camden Council at Planning Committee in June 2023

Headhouse design

Artist's impression from
Adelaide Road

(year 1 view)



Adelaide Road former wall

Survey of original brick wall undertaken in 2020, pre-demolition

Original wall comprised red brick, with piers topped with capping stones

Wire mesh fencing visible behind



Annotated image taken from wall survey

Headhouse boundary wall design

This is an artist's impression of the design that was included in the Schedule 17 Plans & Specification submission for planning consent. The design incorporates railings into the wall and the brick elements reflect the original wall design, including the piers with capping stones

The brickwork is red in colour, based on community feedback

Planting will soften the visual impact along Adelaide Road, which is enhanced by the inclusion of railings in the design. Community feedback expressed a preference for planting trees as natural screening of the headhouse



Artist impression of headhouse boundary wall design

Headhouse boundary wall design justification

The Independent Design Panel advised *“The panel supports the use of railings to create greater visual permeability and is pleased to see that no obtrusive security arrangements, such as razor wire, are required”* and *“If the wall is demolished, the panel suggests that a more creative approach is taken to its replacement rather than replicating what is already there.”*

The feedback from the Independent Design Panel was presented to LB Camden in September 2021 and no concerns were raised about the combination of brick wall and railings. LB Camden stated their preference for a red brick wall and the importance of keeping the piers in the new design, which we included in our design. During the public engagement we asked the community about their preference for the colour of the brick wall and their responses aligned with the LBC stating a clear preference for the red brick

The permanent compound design proposes a continuous zone for planters on the inside face of the compound, with landscaping designed with plants that will provide dense visual screening, softening the impact of the heightened structure and further enhancing the aesthetic for both the pedestrians and the green space

The HS2 permanent wall must have a minimum height of 2.8 metres due to security requirements. If the wall is reinstated as a solid wall, it could be oppressive for pedestrians and would be a visual barrier to the trees planted behind the wall. The wall design combining brick wall and railing creates visual permeability, allowing the greenery to be part of the public road, reducing the big scale of the wall and creating a better pedestrian experience at street level

HS2

4. Questions in advance

Chair

- To NOTE the responses

Question one: Possible subsidence

Possible subsidence: could we get access to base line data, and can you confirm that you will give subsidence claimants the choice to consent to their location being shared so that we can produce a map of subsidence claims?

We will continue to engage with the affected residents during our major excavations and tunnelling works and support them with any third-party damage claims. Through our existing engagement forums, we will also continue to engage with the affected stakeholders such as the freeholders, consenting authorities and their relevant engineers, who represent the interests of the affected residents. At these forums we share the ground movement and third-party damage claims data with these representatives. Some of these forums already meet weekly to monitor ground movement for the purposes of design verification, maintaining a safe system of work and asset protection. The information requested by the ECRG will be shared with the resident following a damage claim and with the individual freeholders, consenting authorities and the appointed engineers where appropriate during our engagement forums. Therefore, providing this information to the ECRG will offer no benefit to residents as the parties above have represented their interests during our engagement with them. We will therefore not be sharing the requested information with the ECRG.

Question two: Drain outside 30 PVE

Drain outside 30PVE which is above the road surface: Can Camden and HS2 both make a statement on whose responsibility it is

The movement at the junction of Park Village East and Mornington Street Bridge, Google Streetview pictures shows evidence of the movement in that area since 2012 and shows repairs in 2015 onward. Camden have undertaken surveys in the area earlier this year and to our knowledge, were planning to repair this area in 2024. As a temporary fix, Camden filled the dip in the road with asphalt. This enquiry should therefore be directed to LBC.

Question three: Surplus land

CPO position where there will not be platforms? Is Crichel Down excluded by the Act?

We are awaiting a decision from the new Government as to how it wishes to proceed with plans for Euston and with regard to the disposal of land no longer required. The Government is required to follow the Crichel Down rules for any land acquired compulsorily along the route.

Question four: Journey times

Journey times i.e. transfer times expected at HS2's Old Oak Common station.

No further information is available from the DfT on this point since that provided at the July ECRG meeting: "All modelled journey times are from a specific origin and destination point – usually the station entrance. The walk time quoted (13.8 minutes) therefore includes walking time (based on reference assumptions) from OOC to the platform and the walk from the platform at Bond Street to the street. The 'via Euston' time quoted (16.7 minutes) includes the same, as well as the additional walk from the platform at Euston to London Underground. If only the walk time at OOC was included this would effectively only provide the journey time to the Elizabeth Line platform, rather than to the street."

Question five: Station design group

Station design group was a subcommittee of ECRG. When will it sit again?

The sub committee will next sit once the station design has recommenced and there is sufficient information to allow this. At present the pause announced in March 2023 remains in place until April 2025.

Question six: Bridge extension

Bridge extension presentation - can you supply the presentation that point 361 of the minutes states that you gave to CRP in April? As CRP participants are bound by an obligation of confidentiality, merely mentioning this presentation does not answer a question from ECRG, and furthermore it puts the CRP participants in a difficult position – yes this is attached to the October ECRG papers.

The Euston Community Review Panel is a representative group consisting of local businesses, institutions, and community organisations. The Panel is intended to act in an advisory capacity to the Euston Partnership Board, providing a community and business perspective. We are currently looking at ways to provide the Panel with more access to the Board. The Panel meets every two months and is chaired by the London Borough of Camden.

The Euston Community Review Panel Members: Agens Namoh - Good Life Euston, Dahmane Oukrif - Euston Residents Advisory Group, Jodie Eastwood - Knowledge Quarter London (CEO), John Myers - Drummond Street Neighbourhood Forum, Matt Hollier - Camden Cutting Group, Sarah Elie - Somerstown Town Community Association, Simon Pitkeathley - Euston Town Bid, Slaney Devlin - Somers Town Neighbourhood Forum, Raja Miah - Fitzrovia Youth in Action, Daniel Pitt - Old Diorama Arts Centre Mary Ann Lewis - LB Camden, Cllr Adam Harrison (Chair) - LB Camden

HS2

4. HS2 Update

Meanwhile Use Spaces

Maria Fidelis Gardens



Euston Square Gardens West



NTH Gardens



Maria Fidelis Gardens

- Handed to Hopscotch, a women's empowerment charity, in May 2024
- Space to be used as a wellbeing tool whilst also teaching users the art of growing plants, flowers, and vegetables
- Full wellbeing and growing programme to commence this September 2024



Euston Square Gardens West

- Initial consultation in October 2023
- Design has been revised following community feedback
- Final design installation began in August 2024
- Space opened 2nd September 2024



NTH Gardens



Concept design



Concept design



Build week



Build week



Build week



Panels



Panels



Hoarding design

NTH Gardens

- The expansion of the NTH Gardens will begin later this year
- Works will last for approximately four weeks
- The entire NTH Gardens will be closed for these works



Euston Community Hub



Images from the July engagement events



Early next year, the Euston Community Hub will open on the ground floor of the Maria Fidelis Old School with the entrance located on North Gower Street.

Works are progressing well with the external wall now demolished and concessions made for the entrance of the hub. Remaining works include:

- Removal of the external scaffolding; Removal and replacement of windows throughout
- main entrance structural works including brickwork and;
- construction of a sports hall

In July, The Euston Partnership (TEP), HS2, and MDiv held three engagement sessions to identify potential services that could be delivered from the hub.

HS2

4.1 Mace Dragados

Completed works

West Gardens - Meanwhile Use

- Works to construct a temporary community garden in the former taxi rank was completed on 2nd September 2024.
- The Northern end will remain a drop off and pick up for people with reduced mobility and drop off only for private hire vehicles.



Station piazza canopy

- In mid-August MDjv completed the new canopy across Euston Station Piazza.
- The new canopy provides a covered route from the main station entrance to Euston Bus station. This will help to improve journeys for passengers during wet weather



Traction Sub-station (TSS)

Progress

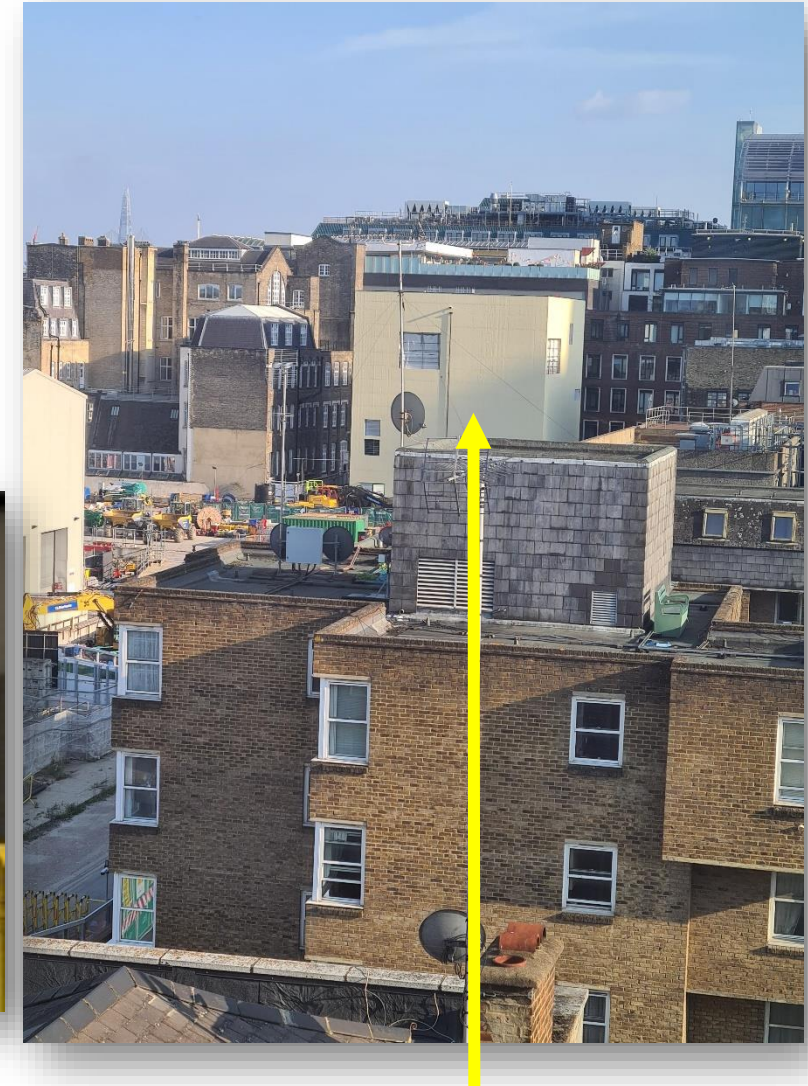
- Façade painting complete to north and west elevation
- MEP installation continued throughout,
- Electrical inspections ongoing,
- Cable Management System and cable labelling on going
- Installation of containment



Cable labelling



Cable Management System / Cable pulling



North and west elevation of TSS

Maria Fidelis Old school progress

On-going and upcoming works

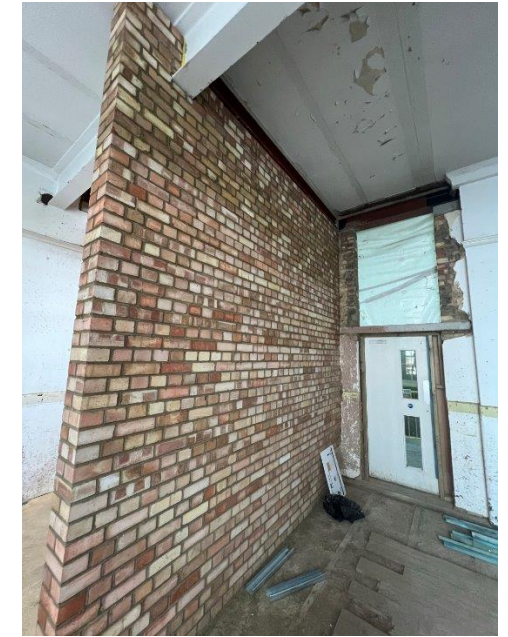
- Drainage works in TEP entrance area remain on hold, - due to asbestos removal
- construction of surrounding brickwork wall ongoing.
- Scaffold removal continues.
- Boarding and partitioning to risers on Level 2 complete.
- MEP works of ground floor, basement and risers continues
- Installation of pipework, ductwork, containment and wiring ongoing



Image showing brick work to TEP entrance on-going



Ground Floor MEP Install Progress – Wiring Commences Today



New Sports Hall Door Openings Complete



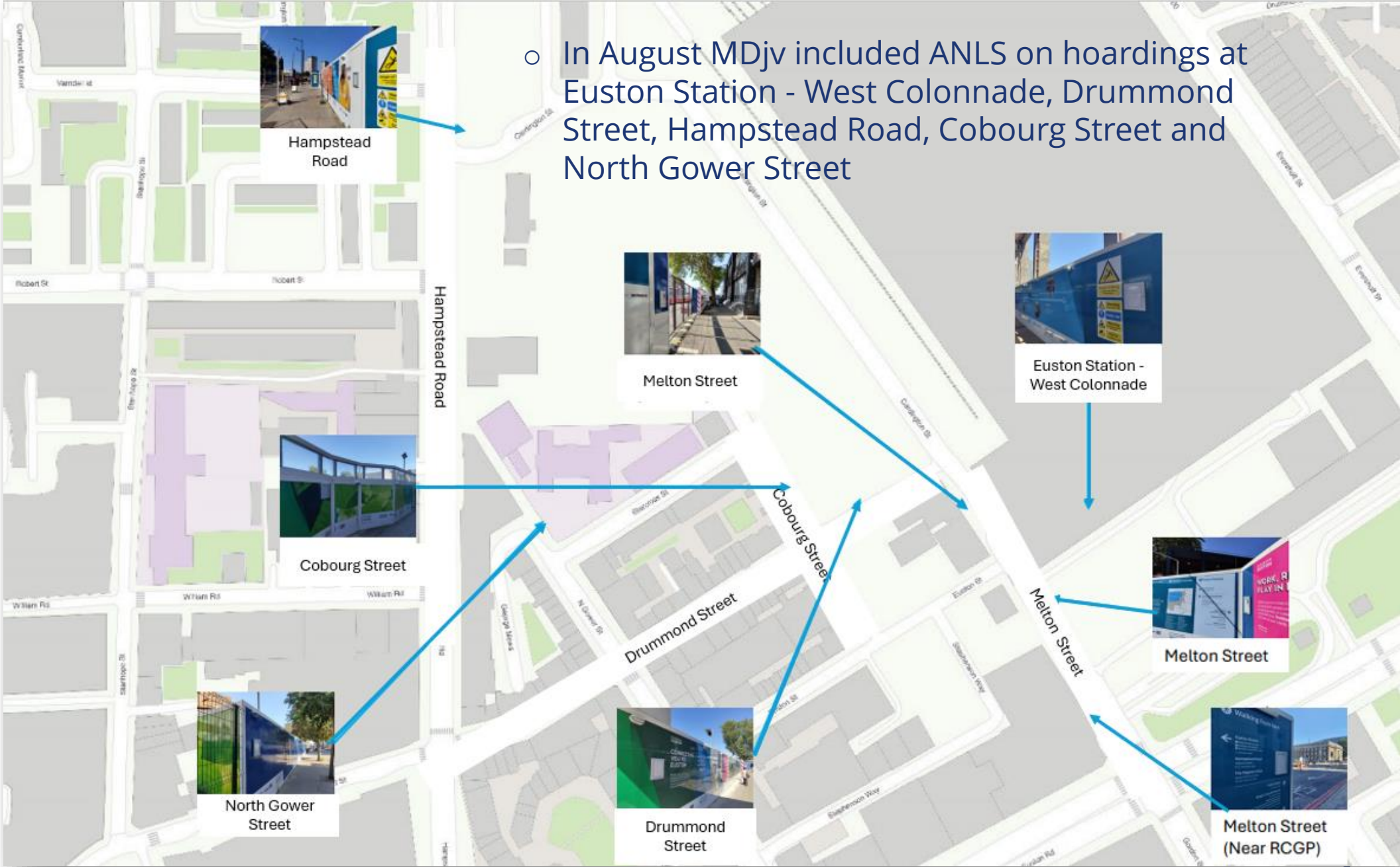
TEP Sports Hall MEP Install Progress

Utilities 3 + look ahead

Location	Description	Start	Finish
Melton Street	Southern Water Tie in	23 September 2024	November 2024
Cobourg Street South -	LUL coring works – <i>(night works)</i>	September 2024	November 2024
Starcross Street behind Exmouth Arms	UKPN – enabling works and Substation <i>(enabling works require temporary closure of staff entrance on Cobourg Street phase 1 & phase 2 – 2 weeks September & October 2024)</i>	September 2024	July 2025
West Gardens	UKPN temporary substations removal	December 2024	December 2024
Hampstead Road / Cardington Street	Cross connection / secondary diversion – Water connection	TBC	TBC
Cumberland Market	Water commissioning	TBC	TBC
Drummond Street	Gas Main	January 2025	June 2025

Advance Notification Letters (ANL) on hoardings

- In August MDjv included ANLS on hoardings at Euston Station - West Colonnade, Drummond Street, Hampstead Road, Cobourg Street and North Gower Street



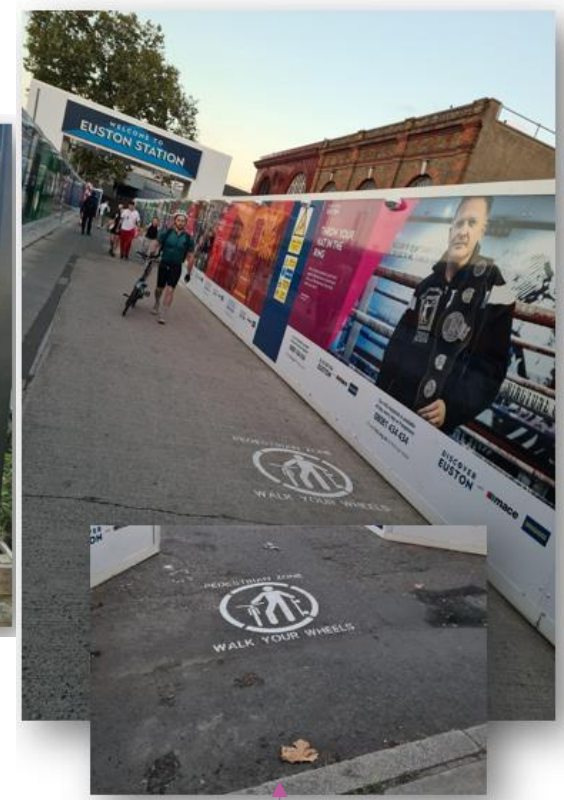
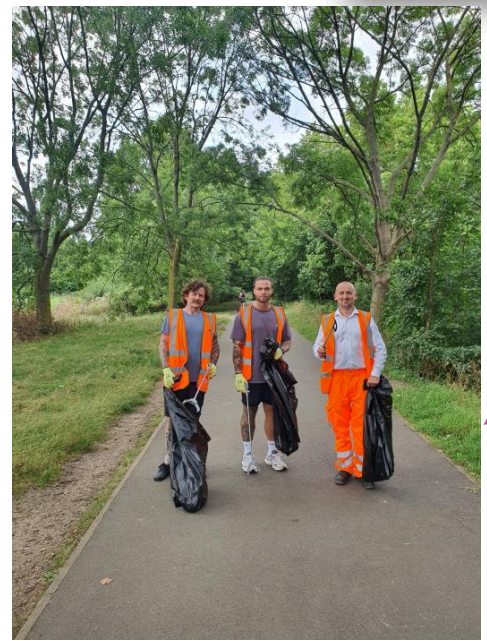
Community Initiatives



TSS & NTH furniture donations - MDjv donated **over 2,000 furniture** to organisations, charities, schools and small businesses in the local area. The donations were due to MDjv staff moving from TSS, One Eversholt Street and NTH into the new Maria Fidelis Old school accommodation.



Volunteering days - "Food for All" and Litter picking & MDjv and contractor -NG Bailey carried out volunteering days at the Food for All initiative in Euston and litter Picking at Regents Park



"Walk your wheels campaign" - MDjv launched a new campaign on Melton Street and Drummond Street public footpaths to encourage cyclists to dismount

Community Space – NTH expansion

- During August 2024, 18 young people aged between 12 and 21 years old committed 5 days of their summer school holidays to build the panels for the NTH Gardens expansion play feature which they have been designing on a weekly basis since April 2024. The final structure will be installed late 2024. During the installation, **the temporary garden will close, November 2024.**



Image above showing artist impression of garden expansion, image on the right showing students panels building



HS2

4.2 On Network Works

Euston station update

On Network Works



Working in
partnership with

HS2

October 2024

New access point at Clarkson Row



Our major work to build the access point was completed in August 2024. We are now in the process of installing the safety features, entry gate and traffic markings on the tarmac, and anticipate that this will be completed by the end of October.

We recently sent out our final update letter to local residents thanking them for their patience and with the projected timeline for the finishing touches installing safety features, secure gate and electrical supplies.

We will be working Monday – Friday from 0800-1700.

HS2

4.3 SCS

SKANSKA



STRABAG

Working in
partnership with

HS2

Tunnels and Shafts construction update

October 2024

Adelaide Road Headhouse & Ventilation Shaft (ARVS)



Pause to works

What to expect during the ongoing pause to works

In line with direction from the Government following its announcement in March 2023, work at the Adelaide Road site have been brought to a safe stop and paused between spring 2024 and spring 2025*.

From May 2024:

- Large machinery has been removed from site
- Hoarding and welfare cabins will remain in place
- 24/7 Security presence will continue
- Lighting on site is reduced, but is required for security purposes
- Some works will continue, within and outside the site, including monitoring, surveys, and design work
- Environmental monitoring of noise, vibration & dust is continuing
- The SCS JV engagement team will continue to be available to speak about our works, contactable via the HS2 Helpdesk (operational 24hrs, 365 days)

*the dates for these phases might change. We'll provide updates at hs2.org.uk/in-your-area/

Construction programme 2024 – 25*

Adelaide Road Headhouse & Vent Shaft	2024				2025			
	Jan - Mar	Apr - Jun	Jul - Sept	Oct - Dec	Jan - Mar	Apr - Jun	Jul - Sept	Oct - Dec
Headhouse								
Ground Slab construction incl. temporary under slab drainage, electrical earthing, waterproofing installation & reinforcement installation								
Vent Shaft								
Start of shaft – Pre-Cast Concrete (PCC) ring installation								
Site pause to works								
Prepare site for pause to works								
Headhouse & Vent Shaft works paused								
Prepare site to resume works								
Utility Works in Camden								
Kilburn High Road, crossing junction of Oxford Rd & Greville Rd. Gas main diversion works								
Finchley Road – gas main diversion works								

*Dates mentioned are subject to change, we will provide updates at hs2.org.uk/in-your-area/

Engagement & Social Value: update & lookahead

Social Value

Complete August 2024

Home Kitchen, Primrose Hill

Adjacent to ARVS site

SCS JV supported the initiative by aiding in construction/electrical works and providing labour resource.

Complete September 2024

Our Kilburn Table initiative, Kilburn

Adjacent to Kilburn High Rd utilities scheme

The initiative is run solely by local community members and provides free hot meals, groceries & hot drinks every Friday for anyone struggling with the cost-of-living crisis or homelessness.

SCSJV engagement team saw a tweet from the initiative, asking for donations/support from local businesses.

Throughout summer, SCSJV and subcontractors Murphy & Hatton have been collecting donations of food & toiletries, amounting to over 160 items, which were delivered on 13 September.

Monthly virtual 1:1s RE: tunnelling (twin-bore Euston Tunnel)

Sessions take place monthly, on the following dates **throughout 2024**:

Complete

Tuesday 20 August - 2 attendees

Topics covered: 1) enquiry related to Adelaide Road and questions RE: GWR operational rail noise pollution 2) general impacts of tunnelling

Tuesday 17 September - 1 attendee

Topic covered: open question as to the impact of SCSJV works on traffic to near their home, ~300m from line of route

Upcoming

Tuesday 15 October, 3pm to 6pm;

Tuesday 19 November, 3pm to 6pm;

Other

- **Quarterly** 3 & 12 month construction look aheads published here: [HS2 in Camden - Construction forward looks](#)
- **Biannual** newsletters
- **As required** Advance Notification Letters issued ahead of new works activities
- **As required** local pop ups
- **As required** Factsheets & FAQs
- **Ongoing** enquiries & complaints via the HS2 Helpdesk
- **Ongoing** engagement RE: Noise Insulation installations

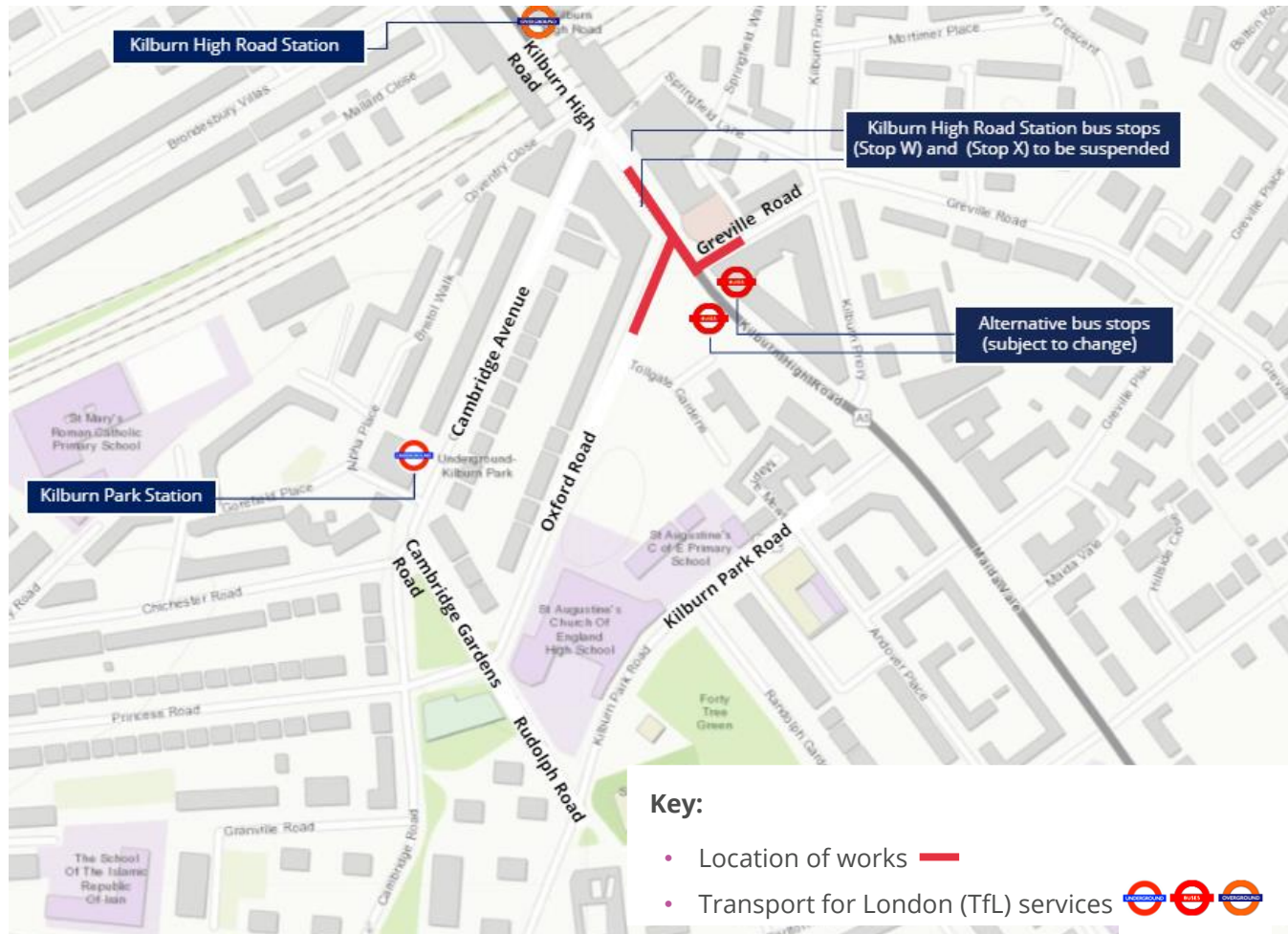
Social Value: Home Kitchen, Primrose Hill



Utility works in Camden



Kilburn High Road gas diversion scheme



Works are ongoing to complete the scheme, with normal TfL bus services resuming week commencing 23/09

- **Kilburn High Road** (Lane closure)
end date 04/10/2024
- **Oxford Road and Greville Road** (Partial road closures)
end date 14/10/2024
- **Carlton Vale**, reinstatement works – 14/10/2024 – 28/10/2024

*Dates mentioned are subject to change, we will provide updates at hs2.org.uk/in-your-area/

Finchley Road gas diversion scheme

Utilities works in preparation for Euston twin-bore tunnel passage

- SCSJV are required to complete works to replace a medium pressure gas main in the Swiss Cottage area
- The route of the gas main includes Finchley Road, College Crescent, Hilgrove Road and Alexandra Road
- The works will be carried out in phases, to minimise impact to the road network
- Traffic Management plans are being reviewed by LB Camden and TfL, comprising lane and partial road closures
- Proposed start date: January 2025* subject to ongoing engagement with the Highway Authority and TfL
- Engagement with the local community and business stakeholders will take place later this year, once the Traffic Management plans are confirmed, to provide advance notice

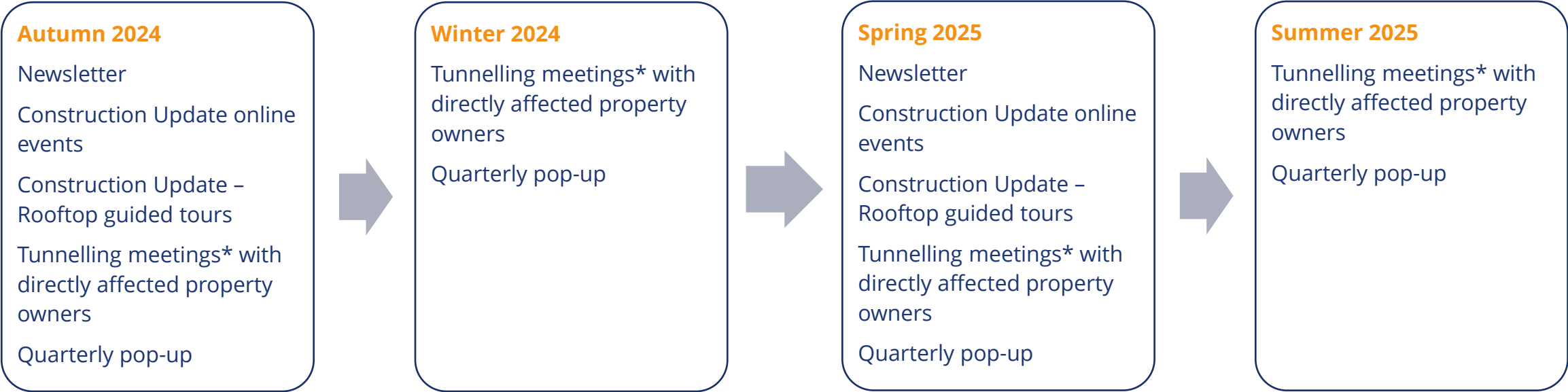
*Dates mentioned are subject to change, we will provide updates at hs2.org.uk/in-your-area/

HS2

Euston Approaches Construction Update

October 2024

Engagement – Autumn 2024 to Summer 2025



How we keep you up to date with our works



* Tunnelling to start in 2026

Major excavations programme

(Tunnels, concrete box, cavern, shafts and railway cutting)

2025

- Site prep for tunnelling
- Site prep for concrete box south of Mornington Street bridge
- Protective works to properties continues

2026

- Start excavating the cavern shaft and tunnels 24/7 in Camden Cutting north
- Start excavating the concrete box, south of Mornington Street bridge
- Start excavating the railway cutting between Granby Terrace and Hampstead Road
- Start removing excavated material by lorry

2027

- Continue 24/7 excavation and tunnelling in Camden Cutting north
- Continue excavation and installation of concrete box, south of Mornington Street bridge
- Continue excavation of railway cutting between Granby Terrace and Hampstead Road
- Start removing excavated material by lorry overnight

Ongoing

Monitor existing ground movement
Surveys and investigations of buildings closest to cavern and tunnels
Monitor and repair any damage, if caused by our works

We have identified a small number of buildings which require extra monitoring or protective works before we begin major excavations. We are in contact with the affected property owners.

Site access

We are working in a narrow worksite, below street level, between a retaining wall and a live railway. As a result, we require various site access points. From North to South:

Vehicle site access

- Vehicle holding area – operational until HS2 works complete
- Lorry lay-by – Park Village East (North)
- Stanhope Street gate
- Hampstead Road gate

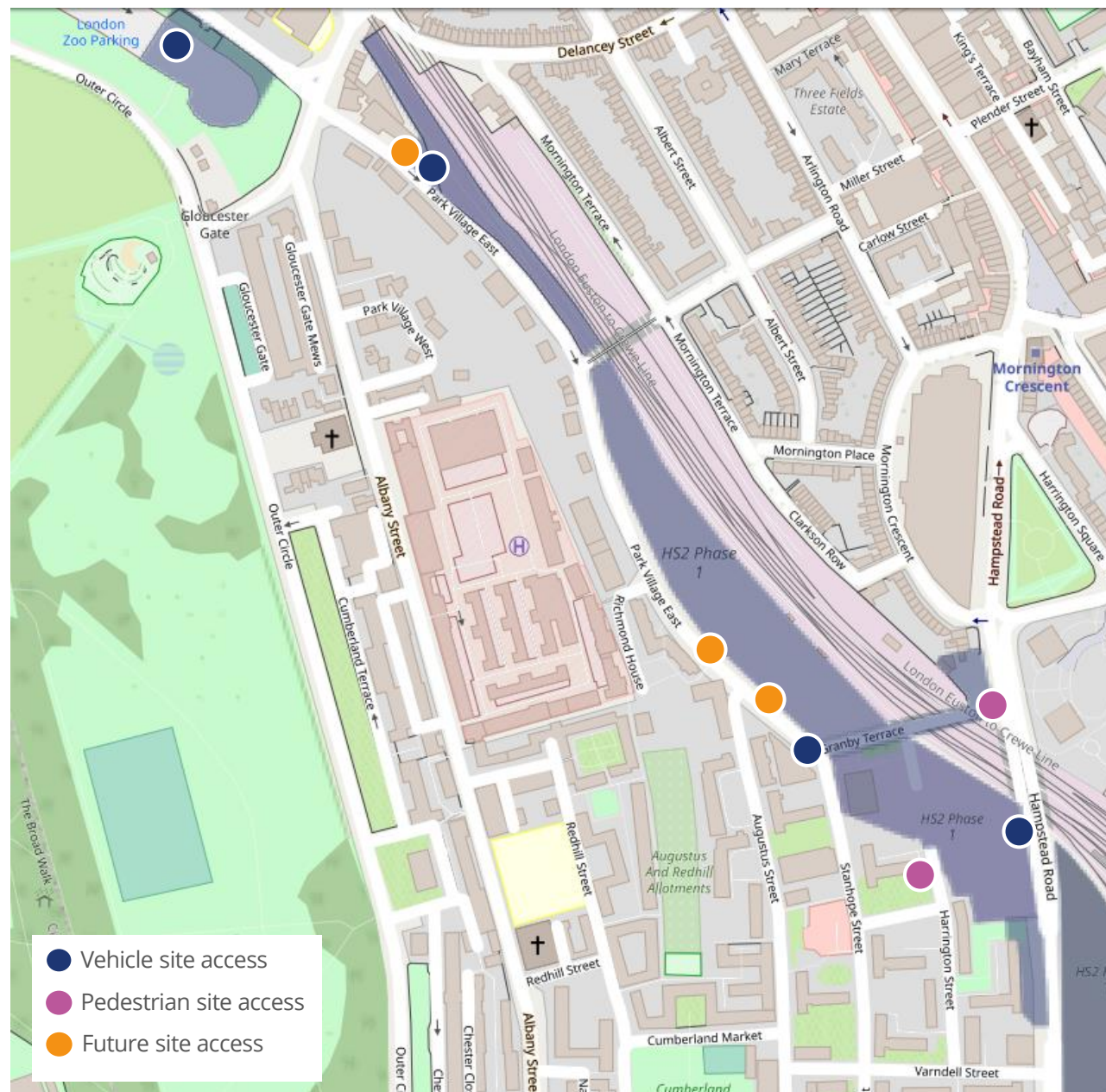
Pedestrian site access

Operational site offices:

- Xavier House
- Stephenson House

Future site access

- Cavern welfare site office access
- Lorry lay-bys – Park Village East (South)



Parkway

Parkway utilities – 2025

In stages throughout 2025

We need to divert and protect the utilities beneath Parkway before we begin tunnelling in 2026. We do not need to close Parkway to complete these works, but we do require lane and footpath closures, and parking bay suspensions. We will carry out this work in phases throughout 2025 to reduce the impact on the local community.

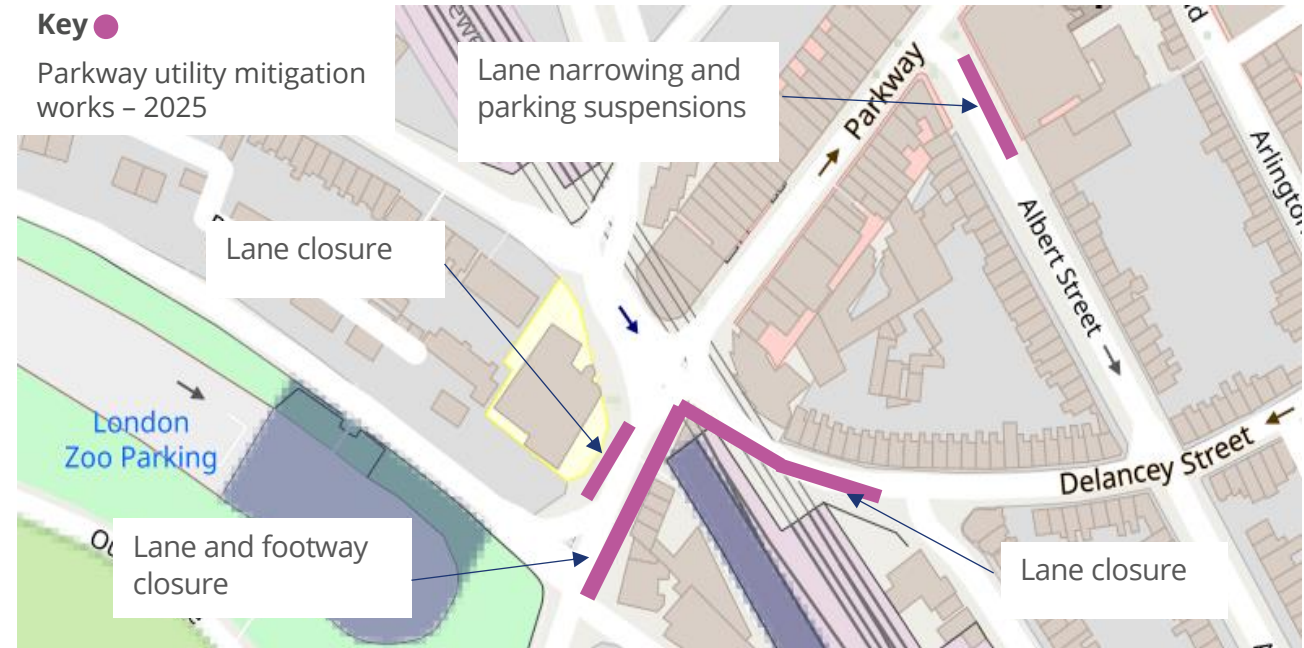
Parkway utility works

We will:

- Divert a cable route on Parkway and Delancey Street
- Line section of sewer beneath Parkway
- Install monitoring equipment on sections of pipework beneath Parkway and Albert Street

We are still confirming the programme but please note we will require lane and footpath closures and parking bay suspensions.

We do not need to close Parkway for these works



Camden Cutting

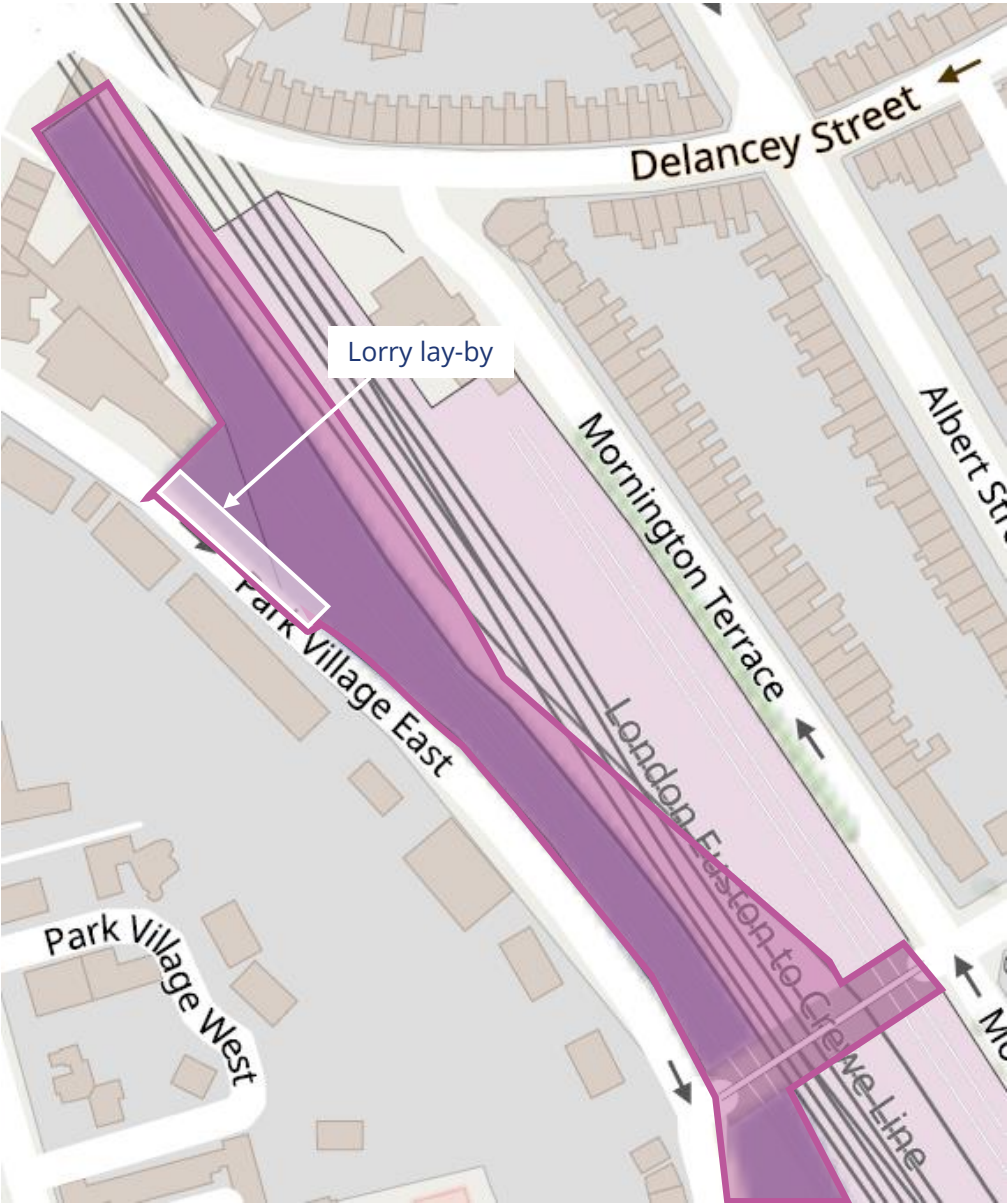
Camden Cutting north

September to autumn 2025

Focus on works to protect the retaining wall ahead of tunnelling and excavation works.

Ongoing works for Cavern headhouse and lorry lay-by extension.

Works in Camden Cutting north	Start	Finish
Protective works to buildings	Mid 2023	Ongoing
Cavern welfare office build	Autumn 2025	Winter 2025
Conveyor install	Autumn 2025	Spring 2026



Office and welfare building in Camden Cutting North

In late 2025, we will install a new site office and welfare building above the tunnel worksite, to support 24/7 operations.

- Located above the worksite, on top of a large frame next to 1 Park Village East
- Three storey building, visible above the lay-by hoarding
- The frame the building sits on is a gantry crane, used to lift equipment and materials in and out of the shaft
- Welfare and office building required as near as possible to the tunnel entrance for close oversight of works and accessible welfare for staff
- The building will include office space for engineers and changing, washing and eating facilities for staff
- There will be staircases at the northern and southern ends of the buildings with a covered walkway around

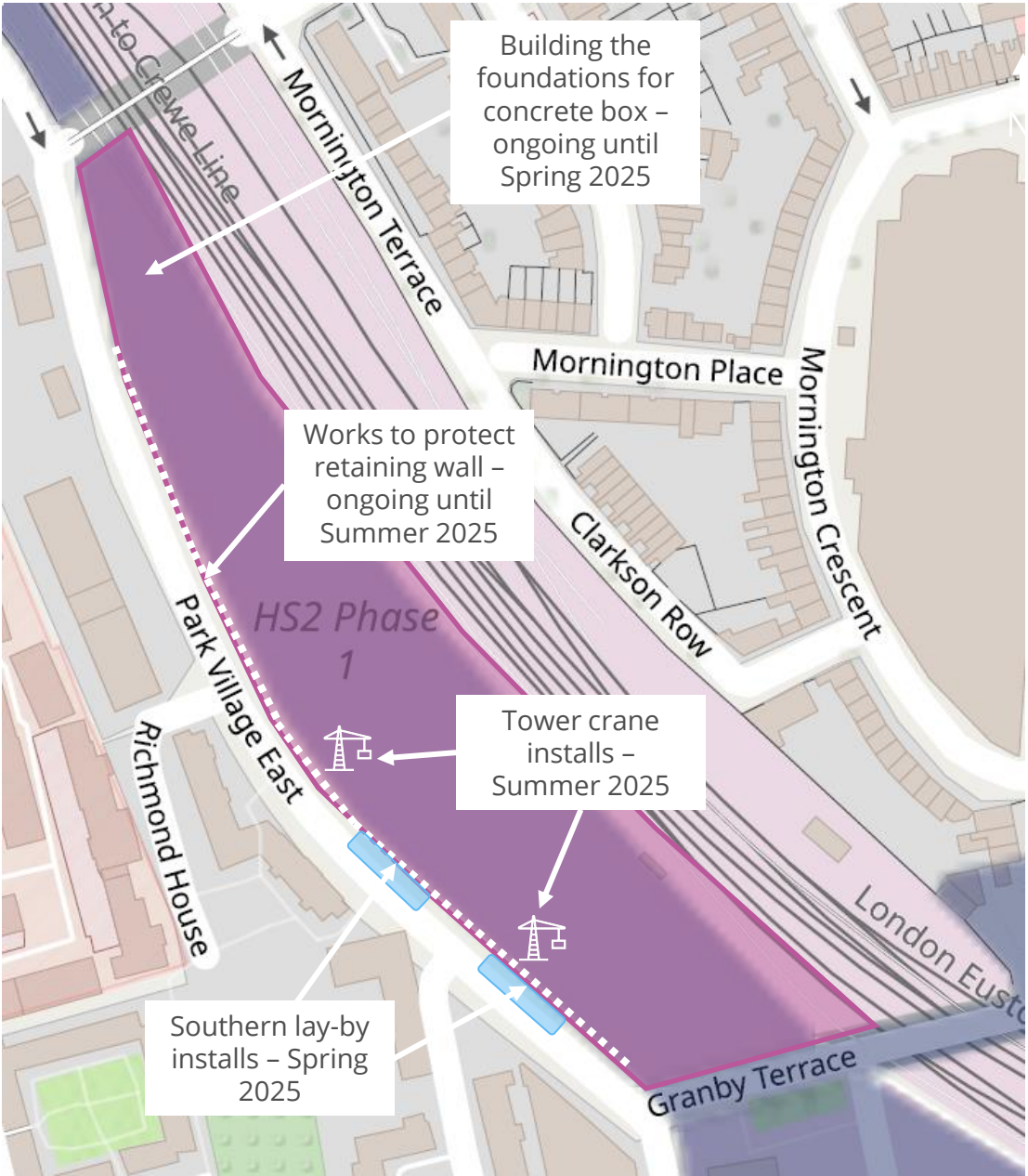


Camden Cutting south

September to summer 2025

Focus on works to protect the retaining wall ahead of tunnelling and excavation works

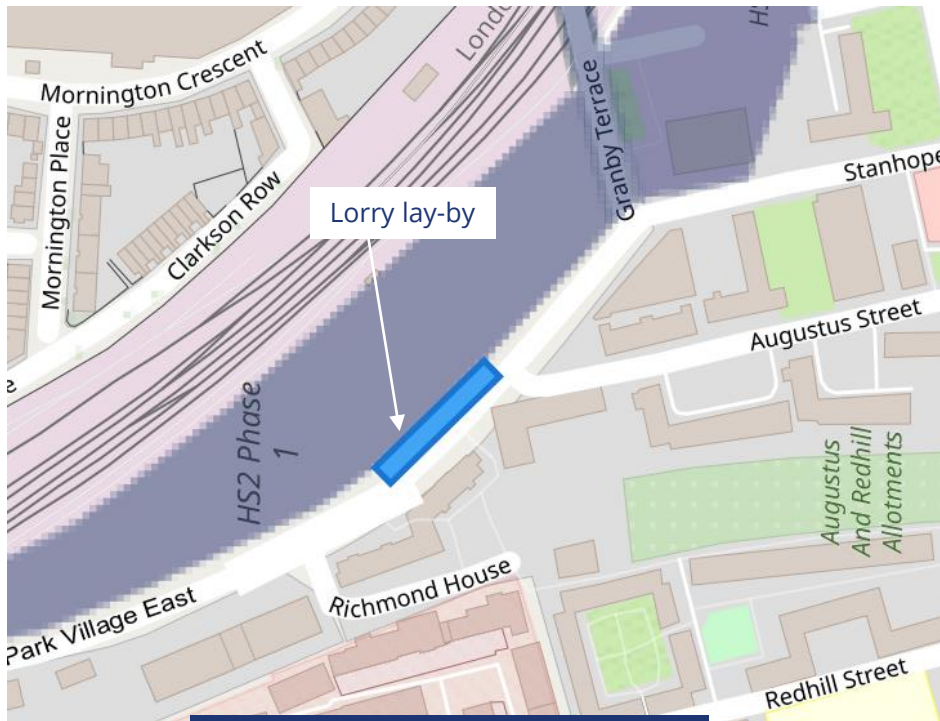
Works in Camden Cutting south	Start	Finish
Track-level works to build foundations for concrete box	Ongoing	Spring 2025
Continuing works to protect retaining wall	Ongoing	Summer 2025
Construction of East Capping Beam (including sheet pile removal)	April 2024	June 2025
Southern lay-by installs	Spring 2025	Ongoing
Tower crane installs	Summer 2025	Ongoing



Lorry lay-by(s) Park Village East – spring 2025

In 2022, we informed you we will install a 65m long lorry lay-by at the southern end of Park Village East. We are now considering using two shorter lay-bys instead, which would allow us to be more flexible with our deliveries, and ensure works are completed more efficiently.

The design is still being developed and we will update you on details in the near future.



Potential design option 1



Potential design option 2

Euston Throat

Euston Throat

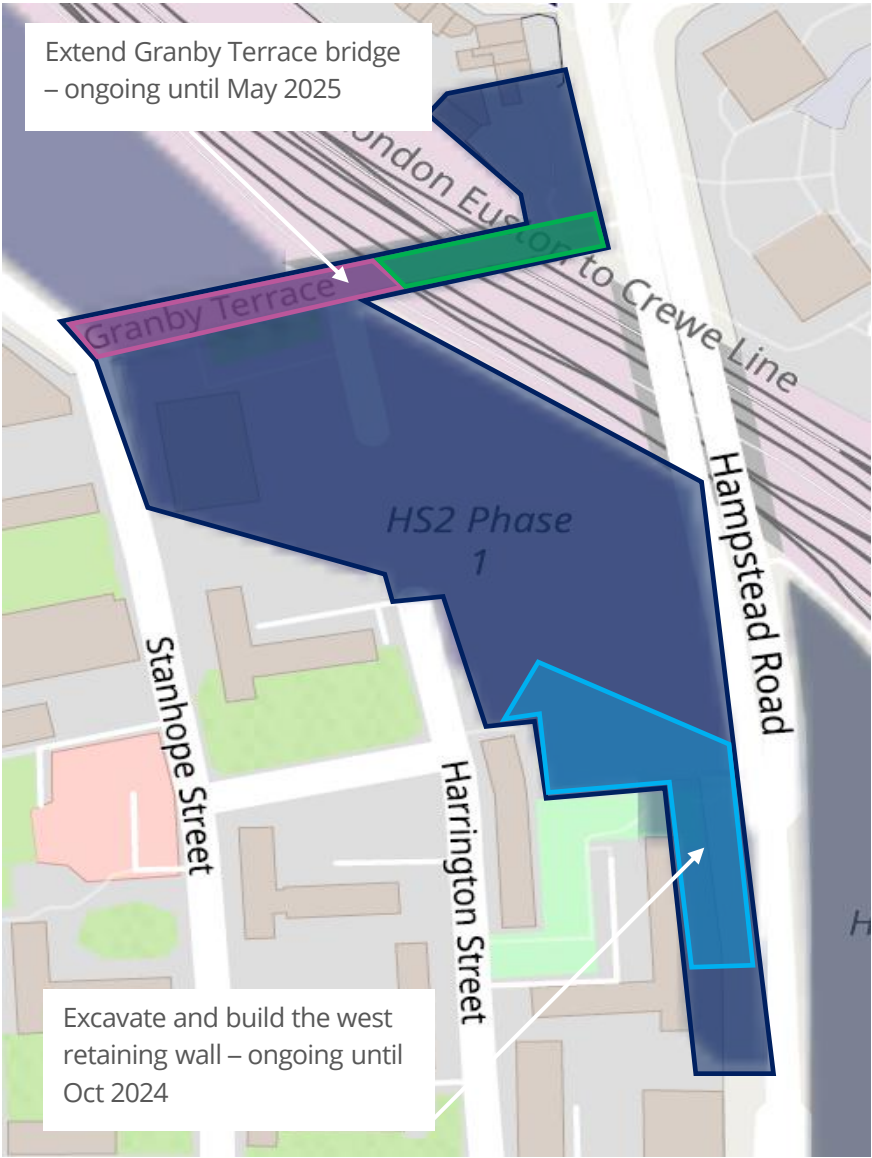
Sep 2024 to May 2025

We will complete the west retaining wall in front of Regent’s Park Estate in Oct 2024, and Granby Terrace bridge extension in Nov 2024. Following this, we will construct the bridge supports, and roof slab. These works will be ongoing until May 2025.

Granby Terrace bridge will remain closed until HS2 works in Euston Approaches are finished. It is not safe for vehicles or pedestrians while major construction works continue on and around the bridge.

We will work a series of rail possessions, and occasional weekends to ensure this work is completed on time.

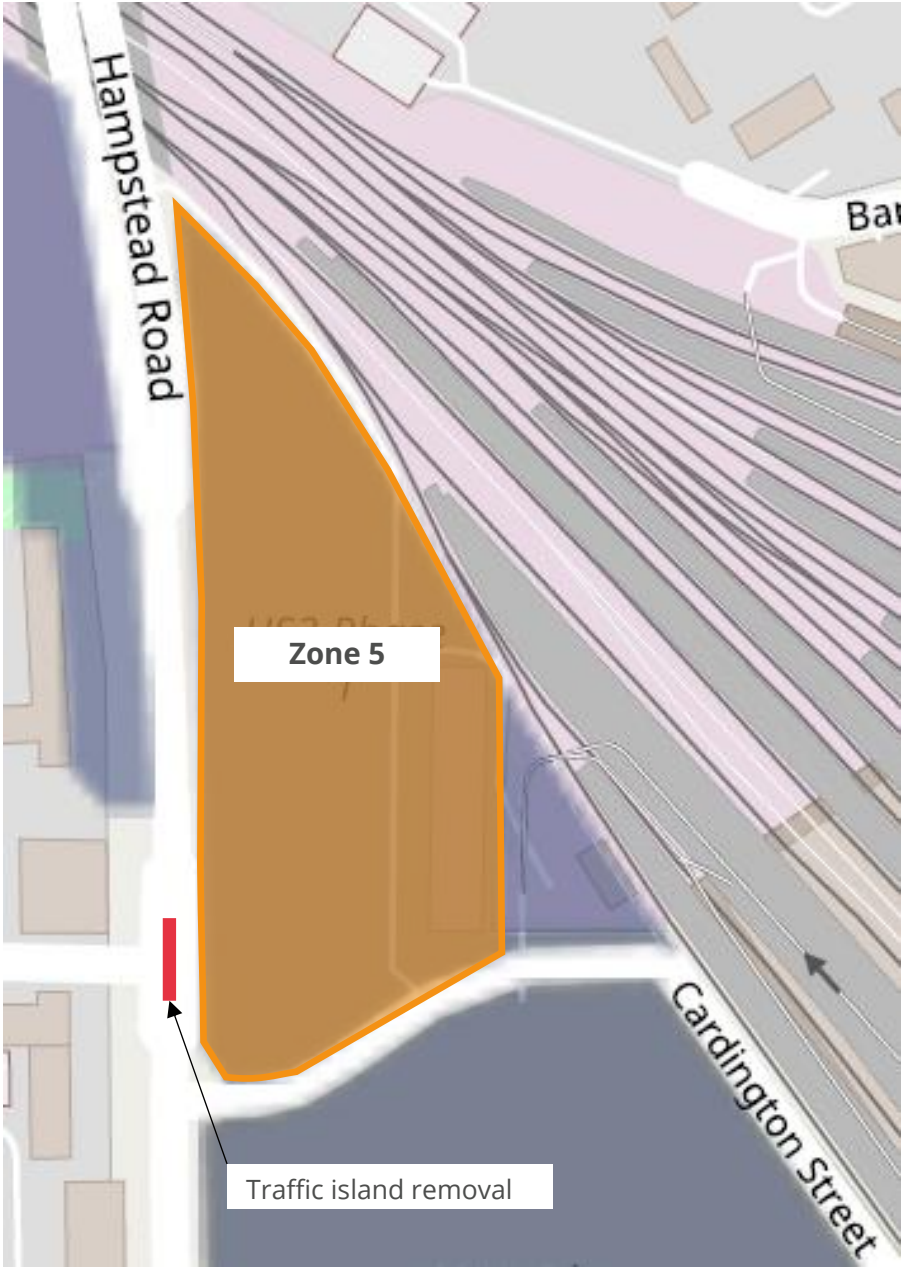
Upcoming works in the Euston Throat	Start	Finish
Construct concrete slab (top of the west retaining wall)	Sep 2023	Oct 2024
Extend Granby Terrace Bridge	Ongoing	Nov 2024
Install Granby Terrace Bridge north roof slab	Feb 2025	May 2025
Overnight weekend works	Oct 2024	Nov 2024



Zone 5 works

In April 2025, SCS will take control of Zone 5 to begin enabling works for the construction of Hampstead Road bridge.

Upcoming works in Zone 5	Start	Finish
Site set-up	Apr 2025	Jul 2025
Hampstead Road traffic island removal	Jul 2025	Sep 2025
Pile mat preparation	Aug 2025	Aug 2025
Piling	Aug 2025	Dec 2025



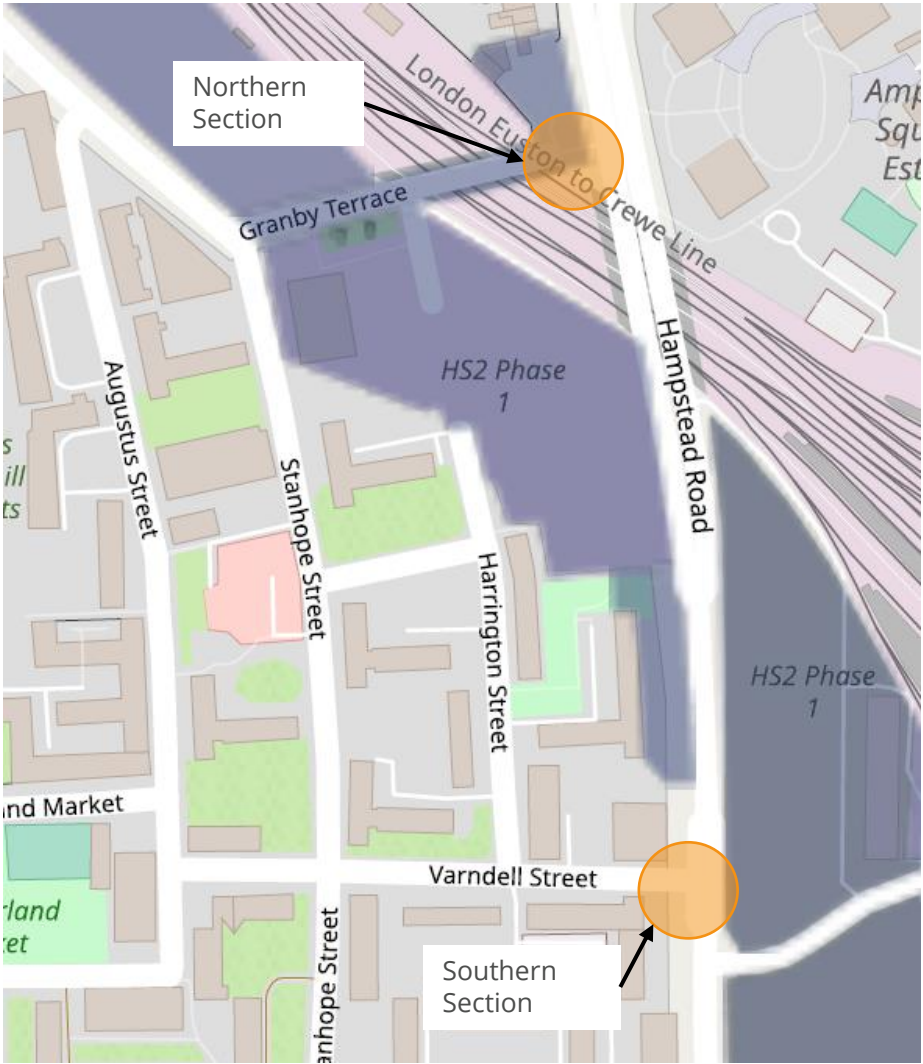
Utility works on Hampstead Road

Focus on diverting utilities away from Hampstead Road, to clear our working area before we extend the bridge. We will carry out a range of road, lane and footpath closures on Hampstead Road and neighbouring streets to complete these works.

Once we have extended the bridge, we will put the utilities back on Hampstead Road.

Phase	Traffic impacts	Start	Finish
2 - Northern Section	Northbound cycle lane closure (current traffic management set up)	7 Aug 2024	13 Nov 2024
2 - Southern Section	Road closure on Varndell Street	8 Oct 2024 (TBC)	13 Jan 2025
3 - Northern Section	Northbound and southbound outer lane closure on Hampstead Road	15 Nov 2024	10 Mar 2025
3 - Southern Section	Road closure on Varndell Street	14 Jan 2025	28 May 2025
4 - Northern Section	Northbound and southbound outer lane closure on Hampstead Road	11 Mar 2025	14 Apr 2025
4 - Southern Section	Lane closure on Varndell Street and southbound lane closure on Hampstead Road	28 May 2025	28 Oct 2025
5 - Northern Section	Southbound footpath and cycle lane closure	15 Apr 2025	8 May 2025
6 - Northern Section	Northbound footpath and cycle lane closure	11 Mar 2025	22 Apr 2025

Further detail is available at [HRB0054-240301-Hampstead-Road-utility-diversion-works.pdf](#)



Community Investment - 2024

Throughout 2024, SCS have been volunteering and donating materials across various charities and organisations in Camden.



Donation of materials to London Zoo to make bug hotels – May 2024



Arranged skip hire by Powerday for Global Generation charity – Jul 2024



Outdoor area works to improve playground at Regent's Park Children's Centre – May to Aug 2024



HS2

Next meetings date

Thursday 28 November