

HS2

ECRG Presentations & Slides

28 November 2024

Agenda

Time	Topic	Presenter
17:20	1. Welcome and Introductions	Chair
17:25	2. Minutes of the October meeting	Chair
17:30	3. Actions log	Chair
17:40	4. Euston Housing Delivery Group	Bek Seeley – Chair of the Euston Housing Delivery Group
18:00	5. Department for Transport written update	Chair supported by HS2 team members
18:15	6. Questions raised in advance of the meeting	Chair supported by HS2 team members
	7. Flash Report and Works lookahead	To note only

Agenda

Time	Topic	Presenter
18:30	8. HS2 update	To note only
	7.1 Mace Dragados	Natalie Kirkwood to take any questions
	7.2 Network Rail On Network Works	Myall Hornsby to take any questions
	7.3 SCS	Neil Van Kervel, David Hannon and Amy Allen to take any questions.
18.50	9. Community Questions and 2025 meeting dates for 2025 18 March 12 June 23 September 27 November	Chair

HS2

1. Welcome and introductions

David Demolder – Chair

HS2

2. Minutes of the last meeting

Chair

- To APPROVE the minutes of the October 2024 meeting

HS2

3. Actions Log

Chair

- To review the Actions Log noting
 - Updated responses
 - Items proposed to be closed
 - That it is proposed to reopen ACTIONS 357 and 361

HS2

4. Euston Housing Delivery Group

Bek Seeley - Chair

HS2

5. Department for Transport written update

- To NOTE the written update

HS2

6. Questions in advance

Chair

- To NOTE the responses

Question one: Surplus land

- a. Does the HS2 Act exempt HS2 from the Crichton Down rules relating to disposal of surplus land.
- b. How many settlements for land acquisitions in the Euston area remain outstanding?

The HS2 Act does not exempt HS2 from the Crichton Down rules. HS2's policy in relation to surplus land can be found here [C6: Disposal of surplus land](#). Section 3 provides further detail on the application of the rules – see 3.5. It is not yet known if the works at Euston will give rise to surplus land.

The land acquisition process for some parcels of land at Euston has not concluded so there are discussions on compensation that would follow.

Question two: Tunnelling consultations

What public consultation did the Government carry out in relation to the recent decision to proceed with public financing of the tunnels from Old Oak Common?

The works are consented under the HS2 Act. There is no requirement for the government to consult on its decision to proceed with funding these.

Question three: Levels difference

How will the track be brought up to platform level from the level of the tunnels 50m underground and what is the difference in levels?

The tracks rise up over significant distances from the tunnels to the stations. The gradients along platforms and across track junctions are required to be almost level, for example the Euston Scissor box has little gradient along its length. This and other vertical constraints from existing structures and utilities restrict the elevation the tracks can reach in the new HS2 Euston platforms.

Question four: Journey times

Please can HS2 provide information on the transfer penalty between HS2 trains at OOC and the Elizabeth Line

The government has announced that the high speed railway will come to Euston. There is no new information on this point. All modelled journey times are from a specific origin and destination point – usually the station entrance. The walk time quoted therefore includes walking time (based on reference assumptions) from OOC to the platform and the walk from the platform at Bond Street to the street. The ‘via Euston’ time quoted (16.7 minutes) includes the same, as well as the additional walk from the platform at Euston to London Underground. If only the walk time at OOC was included this would effectively only provide the journey time to the Elizabeth Line platform, rather than to the street.

ACTION 357 will be reopened and left open at the request of Jeff Travers.

Question five: Contour plans

JT has been provided with contour plans from Primrose Hill by SCS. Please can these be reissued with the contours labelled so it is clear what they mean?

Combined drawings (from Euston Approaches – Gloucester Avenue) with same contour labels will be reissued to JT prior to 28/11.

Question six: Hampstead Road bridge

Please provide definitions for the terms “full flexibility”, “nugatory works” and “avoiding the significant delay” in relation to the proposed Hampstead Road bridge - see page 7 of the presentation made to the CRP dated 18.04.24 discussed under item 4 question 6 at the last ECRG meeting.

Full flexibility:

Providing horizontal alignment flexibility for track provision and alignment. Whilst the new station is undecided, the current bridge arrangements do not overly constrain options.

The current works have continued strictly in line with direction provided to HS2 by the DfT.

Nugatory Works:

Rendering previously installed works, primarily piling around Cartmel, and other enabling activities redundant or having to reassess and/or redesign structures.

Significant Delay:

Redesign of Hampstead Road Bridge would incur a significant delay, in the order of 12 months.

ACTION 361 will be reopened and left open at the request of Jeff Travers.

Question seven: Tunnel boring machines

Please confirm the current position with the tunnel boring machines ie where are they and when will they start work? See Telegraph report <https://www.telegraph.co.uk/business/2024/08/11/labour-review-rail-projects-endangers-vital-hs2-tunnel/> which suggests they are in the ground and need to start work by 2025 as they can't be left in the ground.

The assembly of the Euston Tunnel Tunnel Boring Machines (TBMs) is linked to the programme for building Old Oak Common Station. The area where the TBMs will launch from to build the tunnel is underneath where Old Oak Common Station will be built.

In order to keep the station programme on track, this area needs be covered with a concrete slab in order to build the station.

The TBMs need to be lowered into the station box and assembled prior to construction of the concrete slab. However, we are expecting our downline TBM to launch from spring 2026 and the upline TBM to launch from late summer 2026. These dates remain subject to change.

Further information can be found here: [Euston Tunnel FAQ \(updated November 2024\)](#)

HS2

7. Flash Report and Construction Lookahead

HS2

8. HS2 Update

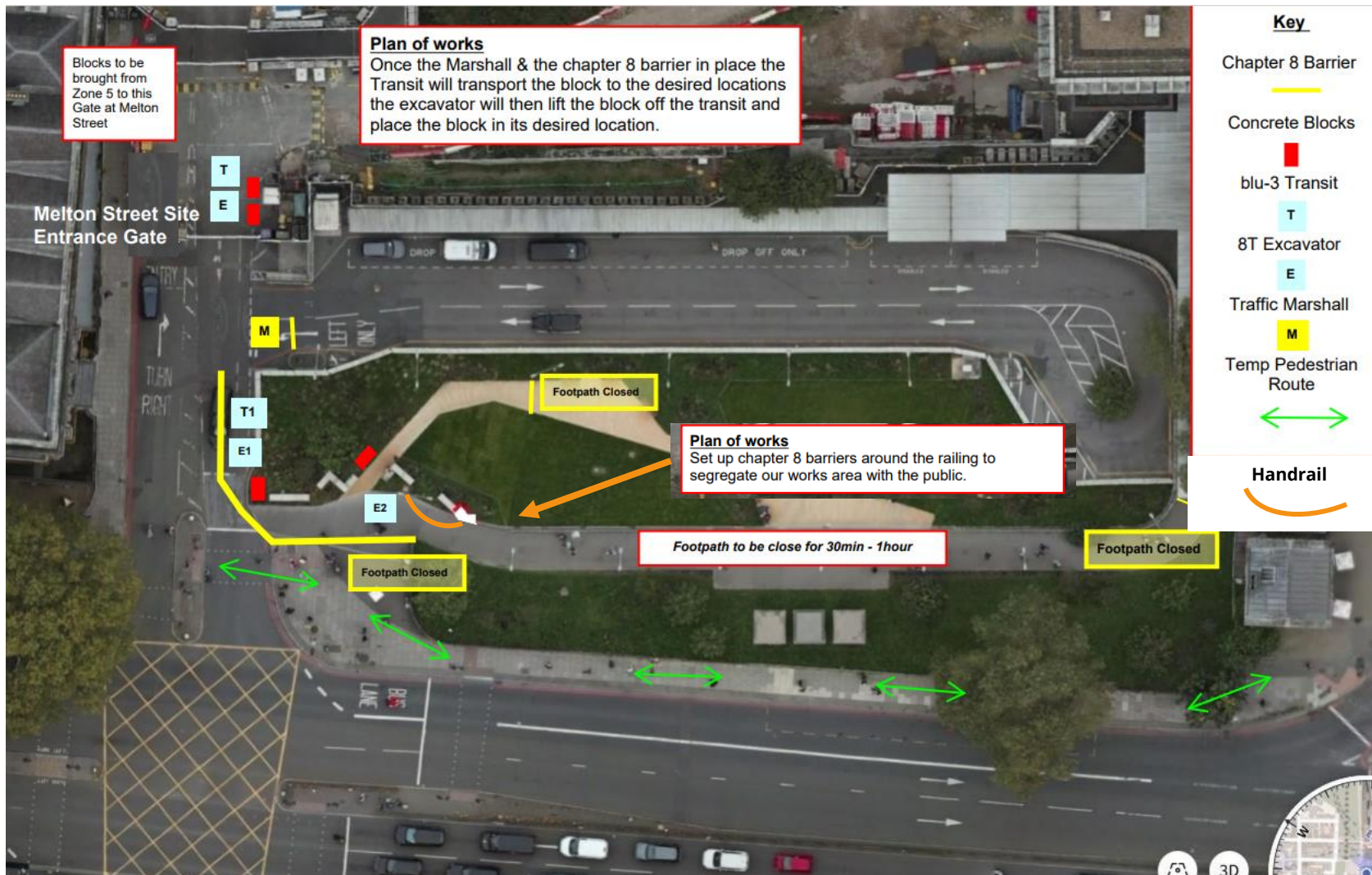
NTH MWU Expansion



- Gardens likely to reopen early Dec 2024 including handover
- Gardens are opened during weekends when works are suspended
- Young people names on hoarding panel



West Gardens Concrete Blocks and handrail



Summary - Works now completed

- Installation of concrete blocks and handrail in the Western Garden
- Wednesday 13th to Friday 15th November 2024
- Divert the pedestrians to Euston Rd while we carry out the work on Friday 15th November around 2/3pm.
- Footpath to remain open during handrail works

Euston Community Hub – Progress Photos

The Euston Community Hub is progressing well and is scheduled to open in February 2025.

The interior work has been completed, and we are in progress of handing the space to The Euston Partnership (TEP).

Services delivered from the Hub will be based on community feedback

For further information, please contact Nassar Ali (Nassar.Ali@hs2.org.uk)



Image of Hall



Alternative image of Hall



Image of Hub space



Themes from an engagement event

HS2

8.1 Mace Dragados

Boundary Protection works



- Maintenance works required to Ramp installed in 2022. This is required every 2 years. Start date **28/ 11/2024** ,approx. 1-2 days. Discussions on-going with NR re: station access.
- No consent required asset sits on permanently stopped up land owned by Hs2



- Repair works required to piazza cobbles (image above old) – day and night works required
- State date **18th Nov until 9th Dec-** subject to NR approval.

Maria Fidelis Old School – Progress Photos

Re-built Brick Wall and Window 71a



Roof Plant Deck Acoustic Screen



South Elevation Scaffold Strike Complete



TEP Entrance Drainage and Thrust Block pours complete.



Hampstead Road utility works

28 October – January 2025

Seven day working, 8am to 6pm

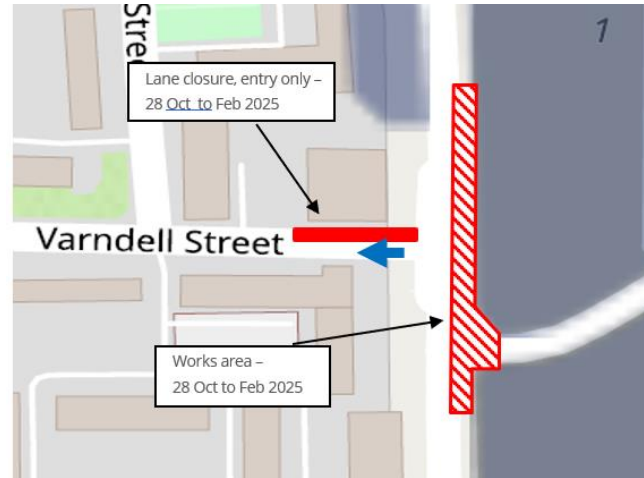
No works will take place over the Xmas period

Relocation of assets via Manhole One

Preparatory works for Thames Water sewer

No access to Hampstead Road via Varndell Street

Southbound lane reduction on Hampstead Road



Images showing location and progress of works

Cumberland Market Thames Water Commissioning Works

Completion of works that have taken place this year.

25 October to late December 2024

Seven day working, 8am – 6pm

No works to take place over the Xmas period

Parking bay suspensions
Lane and pavement restrictions around the worksite



Images showing location and progress of works

Utilities 3 + look ahead

Location	Description	Start	Finish
Melton Street	Southern Water Tie in & commissioning	23 September 2024	December 2024
Starcross Street behind Exmouth Arms	UKPN – enabling works and Substation (enabling works require temporary closure of staff entrance on Cobourg Street phase 1 & phase 2 – 2 weeks September & October 2024)	September 2024	July 2025 (Main works – January / pilling February 2025)
West Gardens	UKPN temporary substations removal	December 2024	December 2024
Hampstead Road / Cardington Street	UKPN Secondary diversion – Watermain reconfiguration connection	Ongoing From November	January 2025
Cumberland Market	Water commissioning	25 th October 2024	December 2024
Drummond Street	Gas Main	Strategy and works programme review	TBC
Bus Stop J remedial works (Hampstead Road)	Resurfacing and drainage works	TBC	TBC

Please note that changes to the programme may occur and we will continue communicate changes

HS2

8.2 On Network Works

Euston station update

On Network Works



Working in
partnership with

HS2

November 2024 update

Access point at Clarkson Row

Our project team are working hard to hand the access point back to the local delivery unit at the earliest opportunity.

Here are some pictures of the new entry gate, and the top & bottom of the ramp. The access point has parking for up to five Network Rail employees/contractor vehicles (up to 7.5tn).



Christmas & New Year at Euston

We're asking passengers to travel before 24 December or after 2 December for a more comfortable journey and check before they travel.

We're also taking the opportunity to improve the railway for passengers during the usual Christmas shutdown on 25-26 December.

Travelling to or from London Euston this Christmas?

Service changes: Tuesday 24 December 2024 to Thursday 2 January 2025

23 DEC Normal service	24 DEC Busy service	25 DEC Station closed	26 DEC Station closed
27 DEC Extremely busy service	28 DEC Extremely busy service	29 DEC Extremely busy service	30 DEC Busy service
31 DEC Busy service	1 JAN Major changes to services	2 JAN Normal service	

HS2

8.3 SCS

SKANSKA



STRABAG

Working in
partnership with

HS2

Tunnels and Shafts construction update

October 2024

Adelaide Road Headhouse & Ventilation Shaft (ARVS)



Pause to works

What to expect during the ongoing pause to works

In line with direction from the Government following its announcement in March 2023, work at the Adelaide Road site have been brought to a safe stop and paused between spring 2024 and spring 2025*.

From May 2024:

- Large machinery has been removed from site
- Hoarding and welfare cabins will remain in place
- 24/7 Security presence will continue
- Lighting on site is reduced, but is required for security purposes
- Some works will continue, within and outside the site, including monitoring, surveys, and design work
- Environmental monitoring of noise, vibration & dust is continuing
- The SCS JV engagement team will continue to be available to speak about our works, contactable via the HS2 Helpdesk (operational 24hrs, 365 days)

*the dates for these phases might change. We'll provide updates at hs2.org.uk/in-your-area/

Construction programme 2024 – 25*

Adelaide Road Headhouse & Vent Shaft	2024				2025			
	Jan - Mar	Apr - Jun	Jul - Sept	Oct - Dec	Jan - Mar	Apr - Jun	Jul - Sept	Oct - Dec
Headhouse								
Ground Slab construction incl. temporary under slab drainage, electrical earthing, waterproofing installation & reinforcement installation								
Vent Shaft								
Start of shaft – Pre-Cast Concrete (PCC) ring installation								
Site pause to works								
Prepare site for pause to works								
Headhouse & Vent Shaft works paused								
Prepare site to resume works								
Utility Works in Camden								
Kilburn High Road, crossing junction of Oxford Rd & Greville Rd. Gas main diversion works								
Finchley Road – gas main diversion works								

*Dates mentioned are subject to change, we will provide updates at hs2.org.uk/in-your-area/

Engagement & Social Value: update & lookahead

Monthly virtual 1:1s RE: Adelaide Road site

Sessions take place monthly, on the following dates **throughout 2024**:

Upcoming

Wednesday 20 November, 3pm to 6pm

(5 registrations)

Wednesday 18 December, 3pm to 6pm;

Wednesday 15 January 2025, 3pm to 6pm

Monthly virtual 1:1s RE: tunnelling (twin-bore Euston Tunnel)

Sessions take place monthly, on the following dates **throughout 2024**:

Upcoming

Tuesday 19 November, 3pm to 6pm;

Tuesday 17 December, 3pm to 6pm;

Tuesday 14 January 2025, 3pm to 6pm

Further information about the Euston Tunnel can be found here: [Euston Tunnel FAQ](#) (updated November 2024)

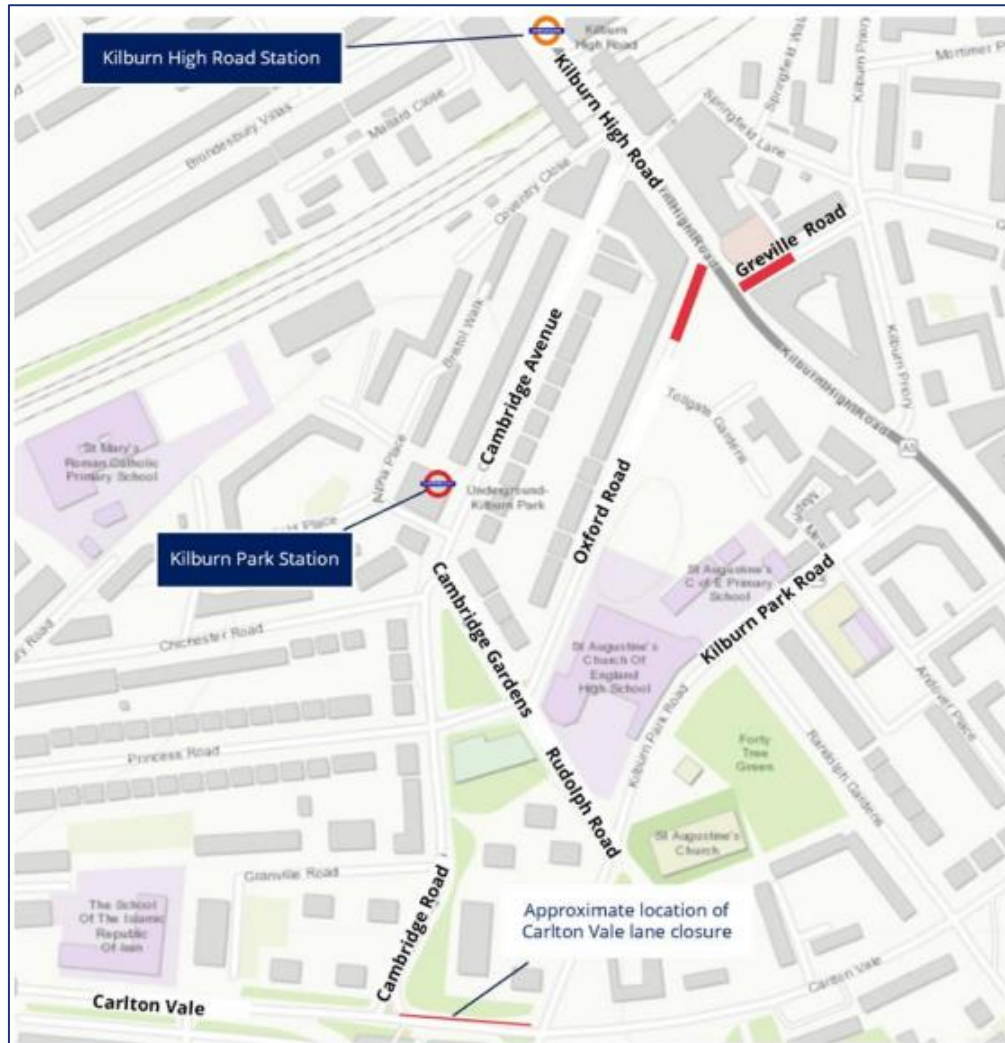
Other

- **Quarterly** 3 & 12 month construction look aheads published here: [HS2 in Camden - Construction forward looks](#)
- **Biannual** newsletters
- **As required** Advance Notification Letters issued ahead of new works activities
- **As required** local pop ups
- **As required** Factsheets & FAQs
- **Ongoing** enquiries & complaints via the HS2 Helpdesk
- **Ongoing** engagement RE: Noise Insulation installations

Utility works in Camden



Kilburn High Road gas diversion scheme



Works are ongoing to complete the scheme

We have encountered some issues, related to the location and condition of the underground pipes. This has resulted in additional excavations and emergency repair works by third party utility companies. In addition to the heavy rain fall in October, this has further delayed the programme. An update Advance Notification Letter was distributed 15/11.

- **Kilburn High Road** works complete & traffic management removed, enabling LB Camden to commence bike lane works
- **Oxford Road and Greville Road** (Partial road closures) extended until 07/12/2024
- **Carlton Vale**, reinstatement works scheduled 25/11/2024 – 07/12/2024

Key:

- Location of works —
- Transport for London (TfL) services



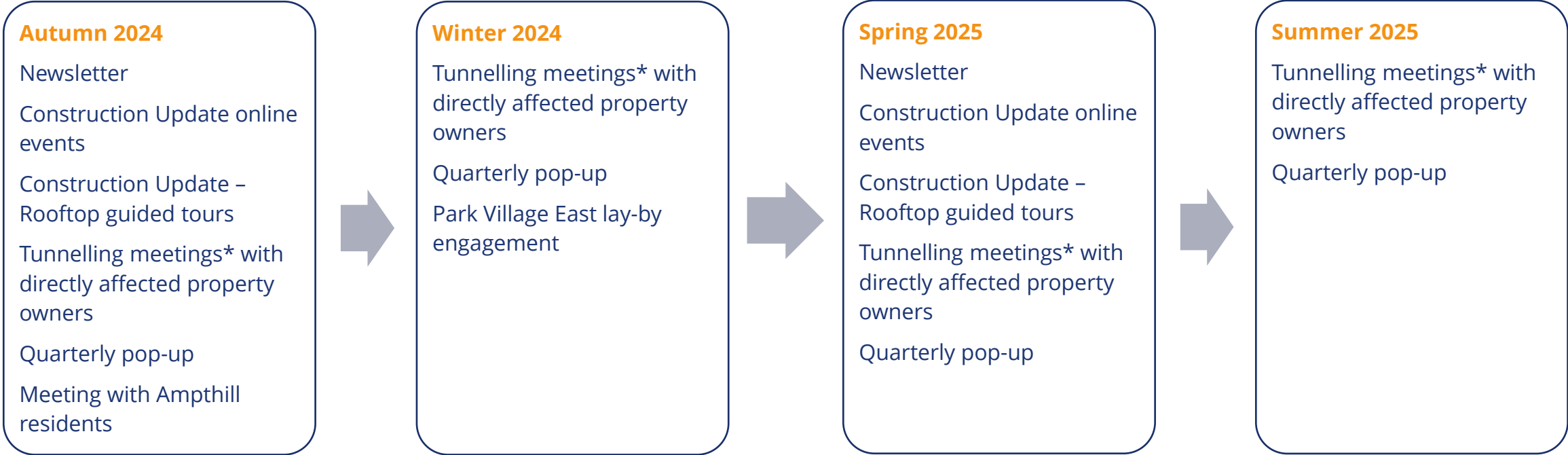
Scope of works (start date: April 2025*)

HS2

Euston Approaches Construction Update

November 2024

Engagement – Autumn 2024 to Summer 2025



How we keep you up to date with our works



* Tunnelling to start in 2026

Major excavations programme

(Tunnels, concrete box, cavern, shafts and railway cutting)

2025

- Site prep for tunnelling
- Site prep for concrete box south of Mornington Street bridge
- Protective works to properties continues

2026

- Start excavating the cavern shaft and tunnels 24/7 in Camden Cutting north
- Start excavating the concrete box, south of Mornington Street bridge
- Start excavating the railway cutting between Granby Terrace and Hampstead Road
- Start removing excavated material by lorry

2027

- Continue 24/7 excavation and tunnelling in Camden Cutting north
- Continue excavation and installation of concrete box, south of Mornington Street bridge
- Continue excavation of railway cutting between Granby Terrace and Hampstead Road
- Start removing excavated material by lorry overnight

Ongoing

Monitor existing ground movement
Surveys and investigations of buildings closest to cavern and tunnels
Monitor and repair any damage, if caused by our works

We have identified a small number of buildings which require extra monitoring or protective works before we begin major excavations. We are in contact with the affected property owners.

Parkway utilities – 2025

In stages throughout 2025

We need to divert and protect the utilities beneath Parkway before we begin tunnelling in 2026. We do not need to close Parkway to complete these works, but we do require lane and footpath closures, and parking bay suspensions. We will carry out this work in phases throughout 2025 to reduce the impact on the local community.

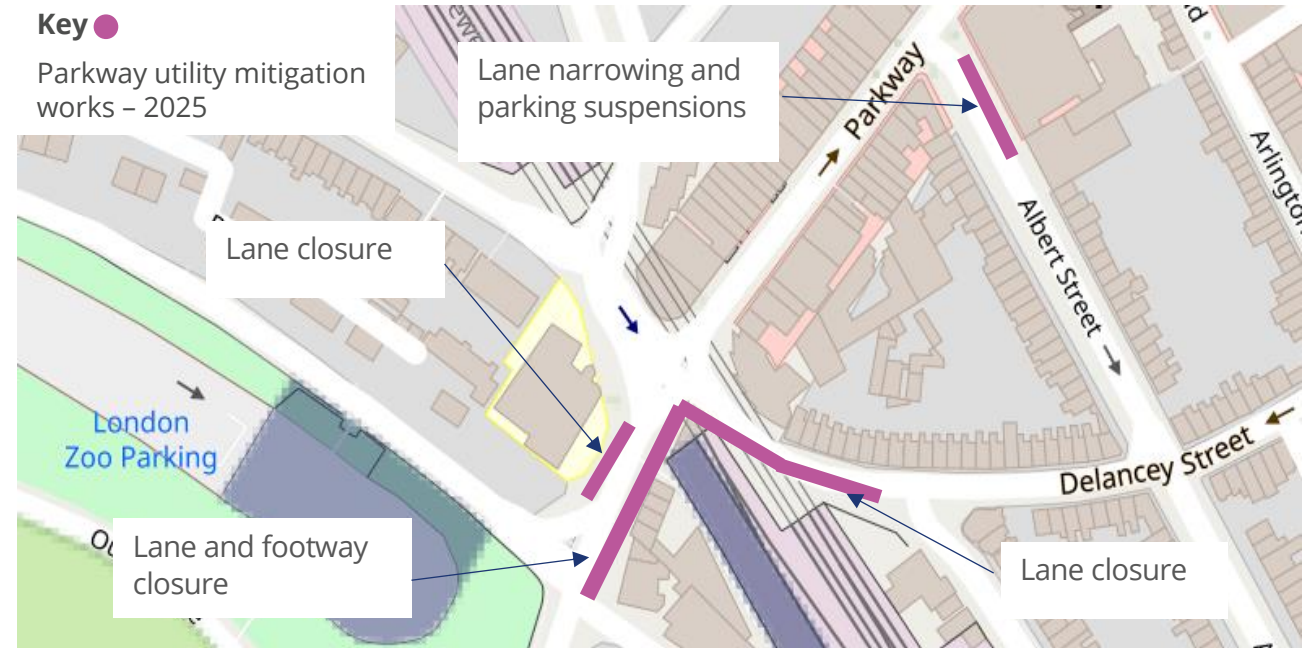
Parkway utility works

We will:

- Divert a cable route on Parkway and Delancey Street
- Line section of sewer beneath Parkway
- Install monitoring equipment on sections of pipework beneath Parkway and Albert Street

We are still confirming the programme but please note we will require lane and footpath closures and parking bay suspensions.

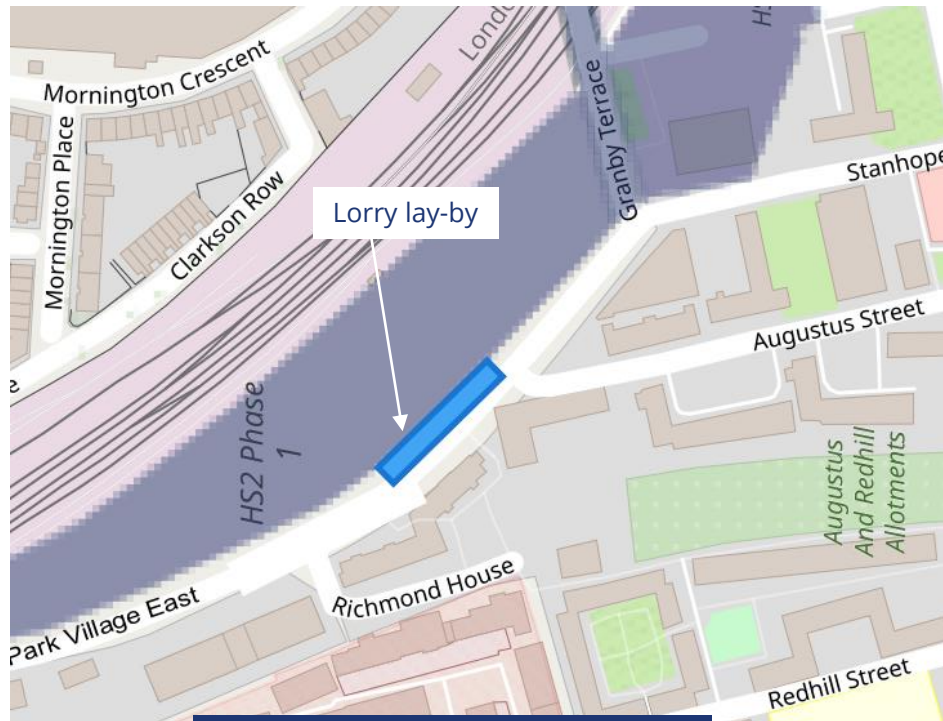
We do not need to close Parkway for these works



Lorry lay-by(s) Park Village East – spring 2025

In 2022, we informed you we will install a 65m long lorry lay-by at the southern end of Park Village East. We are now considering using two shorter lay-bys instead, which would allow us to be more flexible with our deliveries, and ensure works are completed more efficiently.

The design is still being developed and we will update you on details in the near future.



Potential design option 1



Potential design option 2

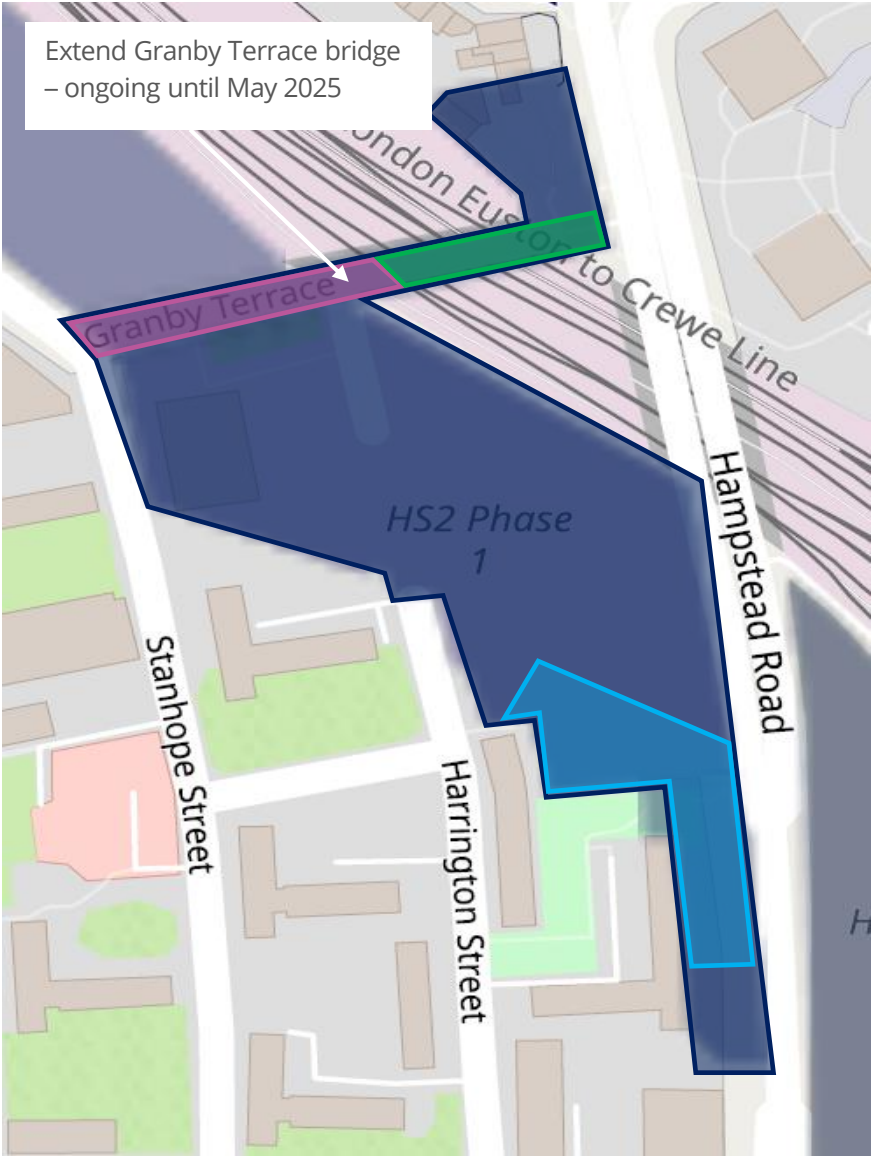
Euston Throat

Nov 2024 to May 2025

Granby Terrace bridge will remain closed until HS2 works in Euston Approaches are finished.

It is not safe for vehicles or pedestrians while major construction works continue on and around the bridge.

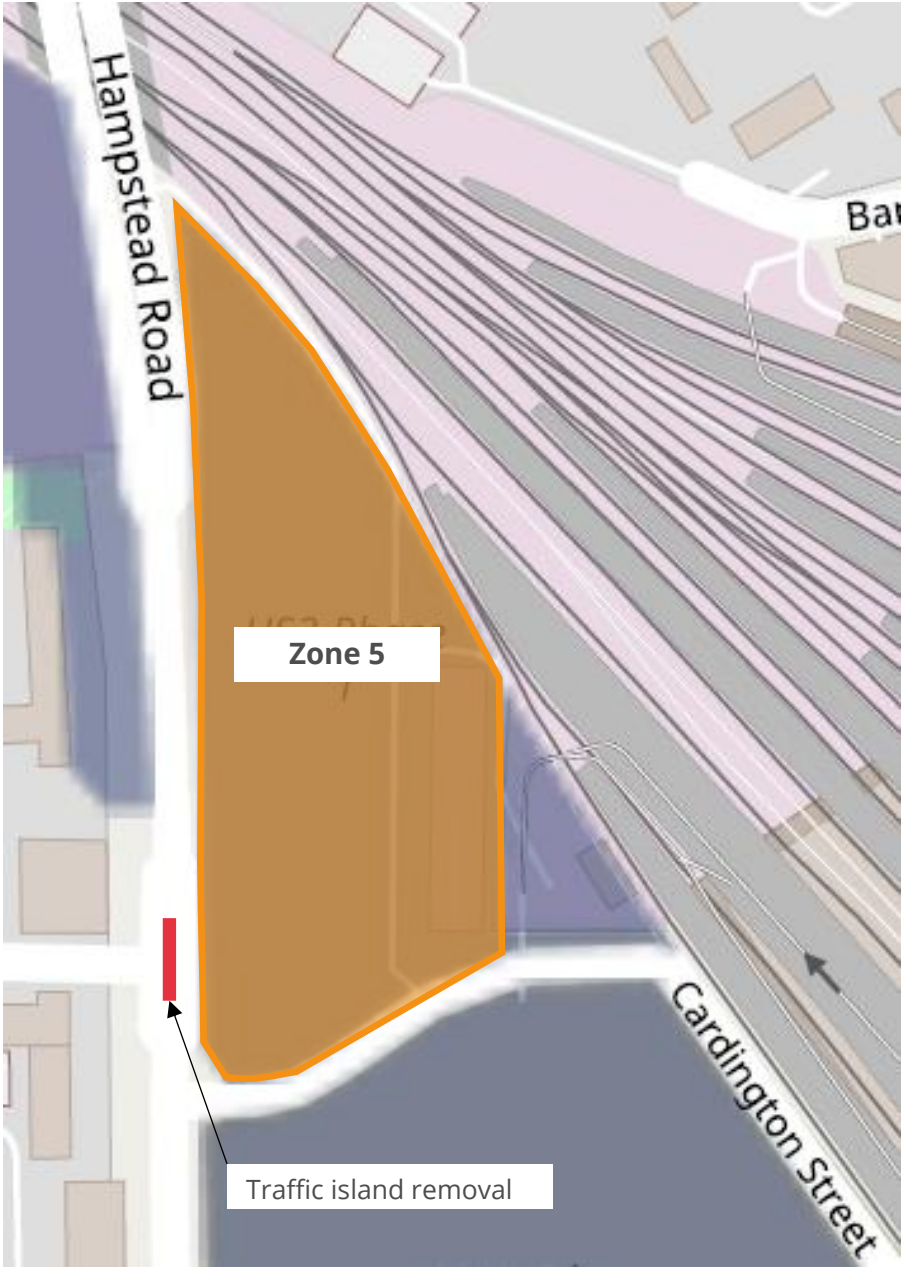
Upcoming works in the Euston Throat	Start	Finish	Status
Construct concrete slab (top of the west retaining wall)	Sep 2023	Oct 2024	Completed
Extend Granby Terrace Bridge	Ongoing	Nov 2024	Completed
Install Granby Terrace Bridge north roof slab	Feb 2025	May 2025	Not started



Zone 5 works

In April 2025, SCS will take control of Zone 5 to begin enabling works for the construction of Hampstead Road bridge.

Upcoming works in Zone 5	Start	Finish
Site set-up	Apr 2025	Jul 2025
Hampstead Road traffic island removal	Jul 2025	Sep 2025
Pile mat preparation	Aug 2025	Aug 2025
Piling	Aug 2025	Dec 2025



Dates are subject to change. We will provide updates as works progress.

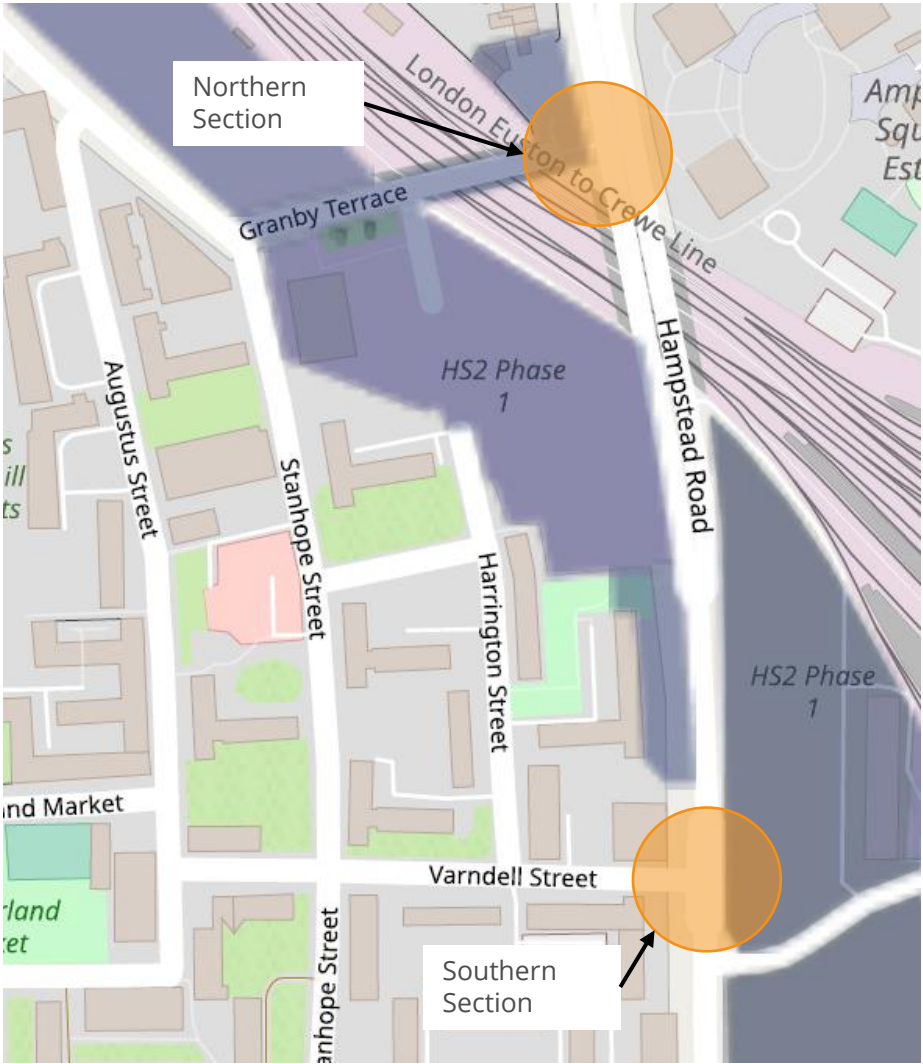
Utility works on Hampstead Road

Focus on diverting utilities away from Hampstead Road, to clear our working area before we extend the bridge. We will carry out a range of road, lane and footpath closures on Hampstead Road and neighbouring streets to complete these works.

Once we have extended the bridge, we will put the utilities back on Hampstead Road.

Phase	Traffic impacts	Start	Finish
Northern Section	Northbound and southbound outer lane closure on Hampstead Road (current traffic management set up)	21 Oct 2024	Feb 2025
Southern Section	Road closure on Varndell Street and southbound lane closure on Hampstead Road (current traffic management set up)	28 Oct 2024	Feb 2025
Southern Section	Road closure on Varndell Street	Feb 2025 (TBC)	Aug 2025 (TBC)
Northern Section	Southbound footpath and cycle lane closure	15 Apr 2025	8 May 2025
Northern Section	Northbound footpath and cycle lane closure	11 Mar 2025	22 Apr 2025

The SCS JV site will close at midday on Monday 23 December and reopen on Thursday 2 January 2025



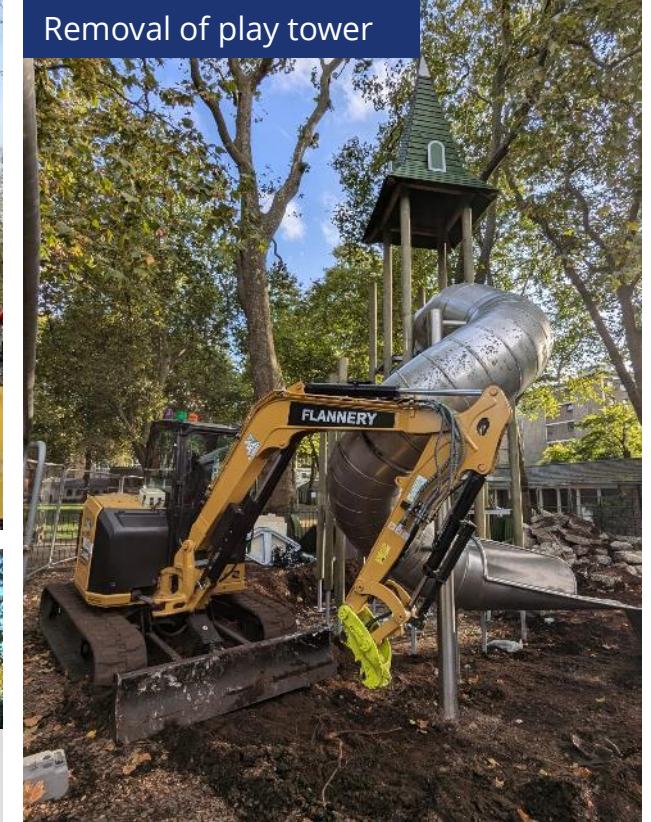
Surma Centre meeting – 02 October

- We presented our Hampstead Road works to the Surma Centre members using an AI software video model with a Bengali translation. Kaes Ali, a Bengali speaker from SCS JV attended to facilitate and answer any questions
- 8 community members attended
- We informed members of the utility works on Hampstead Road and traffic impacts
- We received positive feedback on the video format i.e. the information clear with correct dialect
- Members found the meeting beneficial



Coram's Fields play tower – October

- Coram's Fields planned to remove and replace their old play tower within the play area
- SCS JV in partnership with our subcontractor Flannery donated 3 items of machinery to remove the original play tower



Any other business

Update on The Combe in Munster Square

On 21 November 2024, residents of The Combe in Munster Square, NW1, were evacuated following a crack reported on the ninth floor of the 19-story residential block.

Camden Council and the London Fire Brigade prioritized safety, relocating approximately 150 residents overnight, with 50 supported at a temporary rest centre. Structural assessments by engineers revealed the crack to be on a non-load-bearing wall, confirming the building's structural integrity. By the evening of Friday 22 November, most residents were allowed to return home, except for three households in the affected area, who received alternative housing and support.

The Council is providing ongoing updates and assistance through a dedicated hotline, emphasizing resident safety and swift resolution of the issue.

Statement from the Leader of Camden Council, Cllr Richard Olszewski - *“The most important thing is almost all residents will be able to return to their homes tonight. The Wates report shows the building is safe and the London Fire Brigade agree with our assessment. We had to take action to ensure residents were safe while we fully investigated this matter and I’m grateful for the patience and cooperation residents have shown over the last 24 hours. We have a small amount of repair work to do within the block now, which we will now concentrate on to ensure the three remaining households can come home. These residents have our full support tonight.”*

Update on Euston Station

Euston Station was not evacuated on Saturday 23rd November. But pedestrian routes down from the Station towards Eversholt Street were cordoned off by the Metropolitan Police whilst they dealt with a suspicious package in the local area and station customers were directed to alternative routes. There were no knock on effects to the station during this time.

Update on Hampstead Road pedestrian crossing

To receive an update from SCS.

HS2

Meeting dates for 2025

Tuesday 18 March

Thursday 12 June

Tuesday 23 September

Thursday 27 November

We would welcome your feedback about this meeting. You can provide this by scanning the QR code or clicking [here](#)

Many thanks

