

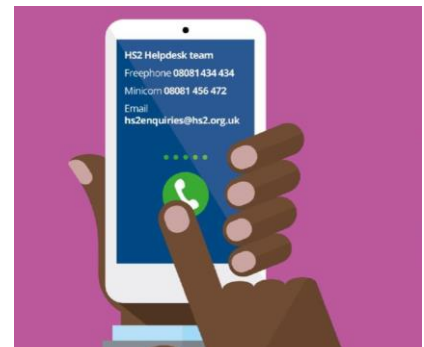
Contact our HS2 Helpdesk team on **08081 434 434**

HS2 Update

Aylesbury | Summer 2024



High Speed Two (HS2) is the new high speed railway for Britain. Should you have any questions or enquiries regarding our works, please contact the Helpdesk details of which can be found in this newsletter. We will be keeping our local website www.hs2inbucksandox.co.uk up to date with information on our works in the local area. Join our local mailing lists (works updates): www.hs2.org.uk/local-mailing-list



What's inside this newsletter...

In this edition of the newsletter, we are looking at what we have done so far in 2024 and what is coming up:

- Road works and closure news
- 2024 key works updates
- Thame Valley viaduct milestone
- Construction updates
- New aerial footage
- Spotlight: A418 realignment
- Local community and business funds
- Community project update
- Progress pictures
- Area map

Join us at our community events...

Over the year we run specific community events and drop-in sessions with our Mobile Visitors Centre and local village halls.

To find out where your next local event is taking place, please visit the events page on the HS2 website for the latest information.

www.hs2.org.uk/events



What's happening in your area?

Updates of works from August – November 2024

Over the next few months, you can expect:

- A41 realignment works progressing to construct the tie-in point to the new northern roundabout and new section of the A41
- A418 utilities work, programme of road closures for road realignment
- Construction of the Stoke Mandeville overbridge, relief road and tie-in to existing road



Traffic management requirements

Below you can see a summary of what to expect in the next couple of months in your area, further information will be communicated via email and the [HS2 website](https://www.hs2.org.uk) (www.hs2.org.uk/route-map) and you can also come and see us at our events.

Location	Works	Traffic Management
A4010, Risborough Road (Stoke Mandeville Parish Council)	Water main works	Lane closures and road closures
A418, Oxford Road (Stone, Bishopstone, and Hartwell Parish Council)	Utility and realignment works	Lane closures and series of road closures
A41, Bicester Road (Waddesdon Parish Council)	Tie-in works	Lane closures and weekend road closures



Thame Valley viaduct – key milestone

Significant progress has been made in the construction of the Thame Valley Viaduct (TVV). The halfway point has now been reached. This marks the installation of 81% of beams and 91% of piers, and the completion of the north abutment. Over 300 planks have been installed and post-tensioning is ongoing. This approach, which involves the off-site manufacturing of most key components, is a first for the UK.

Each beam, weighing 90 tonnes and spanning either 20 or 25 metres, is positioned atop the viaduct piers using two large cranes. The design strategy utilises larger hollow u-shaped beams instead of multiple smaller ones; streamlining construction and reducing the weight of the structure. This approach also lessens the dependency on carbon-intensive materials like concrete and steel, leading to a reduction in TVV's carbon footprint by approximately one-third.

The viaduct spans 880m across the floodplain of the River Thame. The design ensures minimal impact on the landscape, with the underside of the viaduct sitting just 3m above the ground. The design element of the post-tensioning works, which involves stitching the beams together, further reduces the viaduct's carbon footprint and impact on the local community.

The progress made on the Thame Valley viaduct, a first-of-its-kind railway viaduct in the UK, has led to the same approach being applied to the upcoming Edgcote viaduct in Northamptonshire.



Check out the latest Thame Valley viaduct progress by scanning the QR code below!



Construction updates

A418, Oxford Road

Progress on the A418 in the lead up to the permanent realignment has continued with a series of essential works. This has included general maintenance operations, testing the road surface, trial hole inspections for utility connections, and monitoring drainage conditions. The offline construction of the new A418 overbridge is now at an advanced stage as we begin to tie in the road to the existing A418 for completion later this year.

A41, Bicester Road

The first phase of the realignment of the A41 was completed in May, as we constructed the tie-in point to a new roundabout and a new permanent road to connect to the A41. A section of Blackgrove Road has been removed to allow our earthworks operations to progress more efficiently. The new permanent 1.5km road opened to the public at the end of May.



Drone shot of the new roundabout and new permanent road linking to the A41

Abnormal loads

Abnormal load beam deliveries have continued throughout the first half of this year as we install the final beams of the 72 required for the Thame Valley Viaduct. Deliveries will continue for abnormal loads in October later this year under overnight traffic management to avoid disruption for road users.



Thame Valley Viaduct beams being delivered

A4010, Risborough Road

Construction of the Stoke Mandeville Relief Road carriageway and overbridge have been progressing well this year. The relief road is currently being built offline and will tie into the existing road toward the end of this year and eventually link to Buckinghamshire Council's SEALR project. Utility services on the current A4010 are being diverted to accommodate the relief road tie in point and construction of the HS2 railway line.

Spotlight: A418, Oxford Road Realignment

This year, we will be progressing with the realignment of the A418.

Why are we building this realignment?

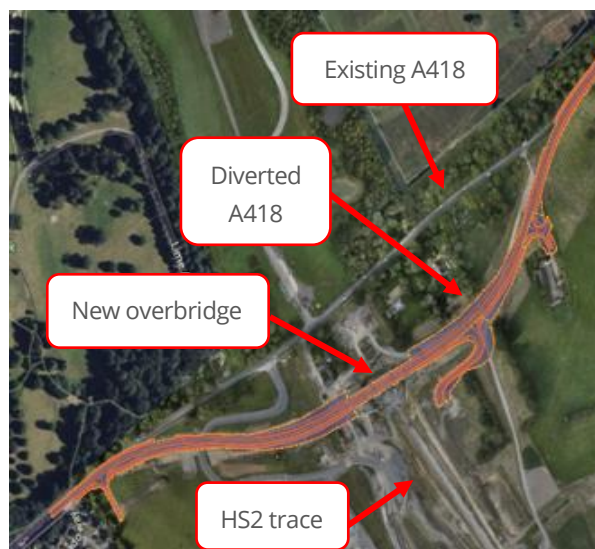
In July, we commenced the realignment works on the A418 to bring the new overbridge online. By diverting the road onto the overbridge, it will allow us to continue construction in the area and complete the cutting in which the HS2 train will run through once operational. There will be a series of road closures of the A418 until November as we continue with this work.

What work will you be doing and how long will it take?

The first phase of work will be completed during weekend closures in July: this will focus primarily on utility and drainage works. Additionally, these closures will allow for the beginning of the installation of concrete protection slabs - a critical element for utility protection.

The extended closures during August and September will involve undertaking multiple activities and continuing with the installation of the concrete protection slabs.

As we move closer to completion of these works, there will be an additional closure to lay the final tie-in sections to connect the new road to the existing A418. The new road alignment will then be open to road users, likely to be toward the end of this year.



*A418 Oxford Road realignment plans
(Stone, Bishopstone, and Hartwell Parish Council)*

Why will the road need to be closed for 24 hours?

We will have a series of 24 hours road closures until November. If we were to work only overnight for approximately 8 hours, the closure timescale would be extended by several weeks. Due to the nature of the works, including removing the surface of the carriageway, the road will not be accessible, meaning it is unsafe for any vehicle to drive through these closures.

Will pedestrian access be maintained?

Yes, we have created a temporary footpath through our site in order to maintain pedestrian access. As part of the new realignment, there will be a footpath on the overbridge for pedestrians and cyclists to use.

EKFB aerial footage

One of the best ways to see the progress we are making on site is from our aerial footage. If you scan the QR code on your phone below, it will allow you to view the latest of HS2 works in your area.

The footage gives an annotated overview of where different structures will be found once HS2 is complete, along with an update of how the landscaping is currently looking.



Click here, scan me or follow the link!

www.bit.ly/Aylesburyfootage



Community and Business funding

Are you a local community group or business that's looking for support from HS2?

The Community and Environment (CEF) and the Business and Local Economy Fund (BLEF) schemes will provide up to £40m of funding throughout the construction of HS2, supporting community-led projects.

The Funds also support initiatives that bring benefits to local communities, such as the provision of new community facilities or support for local heritage and culture.

You can find more information about eligibility and how to apply on the HS2 website.

Alternatively, you can get in touch with your local Community Engagement to find out more information and support.

www.hs2.org.uk/in-your-area/community-funding/



Community projects

Waddesdon Hall volunteering

In June, a team from EKFB spent a day volunteering at Waddesdon Hall. 37 members of the team painted fences, jet washed the patio, de-weeded and cleared the front and rear gardens, and erected a pagoda for the community hall. The team even managed to do this on the hottest day of the year to date!



Winter Waggle PACE event

EKFB and subcontractors Danny Sullivan, Reliable Contractors, Blackwells, and Octavius, celebrated a successful day of fundraising in February. The team took part in this fundraising in support of PACE, a charitable organisation which helps to provide the necessary funds for children with neurodisabilities, and their families, to access vital educational and clinical support.



St. John's Sports & Social Club car park

The project came to fruition after EKFB's Social Value team were approached by St John's Sports and Social Club in Stone, who sought help and expertise in assisting them with the reconstruction of their car park. The existing space was in poor shape, unsuitable for vehicles, and operating on a weather dependent basis which made it challenging for club members to access the facility safely.

EKFB led their team of suppliers who volunteered their time to provide the plant, the people, and assisted in securing the site for the works. A special mention for Heidelberg Materials who generously donated 300 tonnes of materials to the project, which is our largest donation to the community in Stone to date. The works were completed successfully ahead of the three-week proposed schedule, allowing the local parish council and the club to complete the final step in laying the topsoil.



Contact our HS2 Helpdesk team on **08081 434 434**

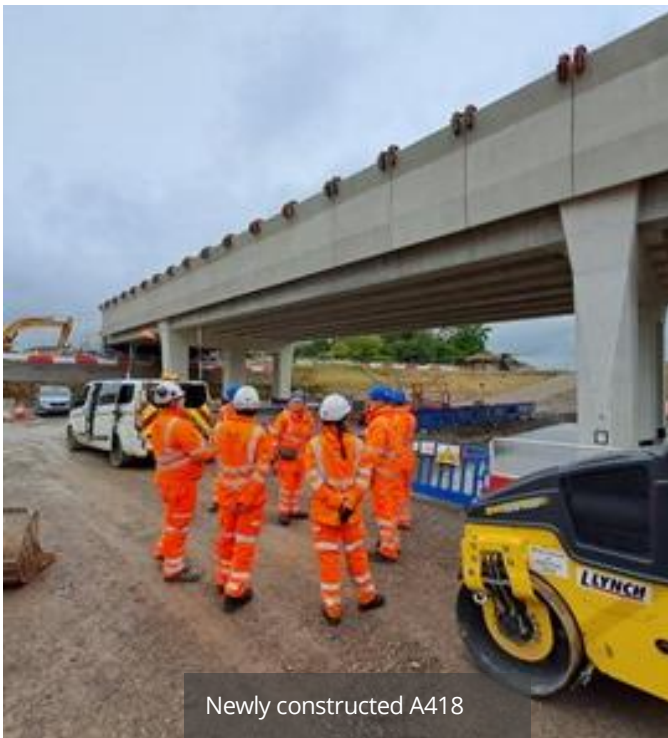
Progress in pictures



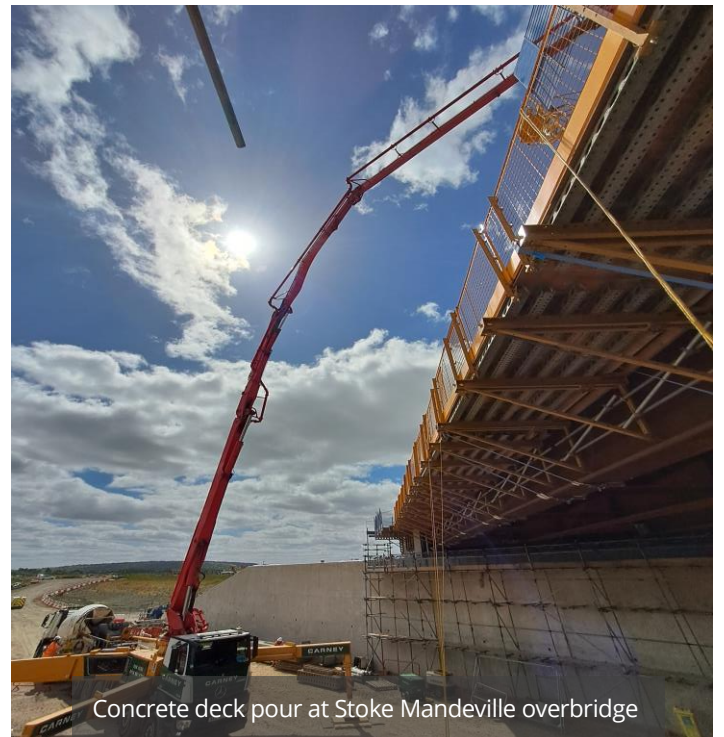
Stoke Mandeville culvert



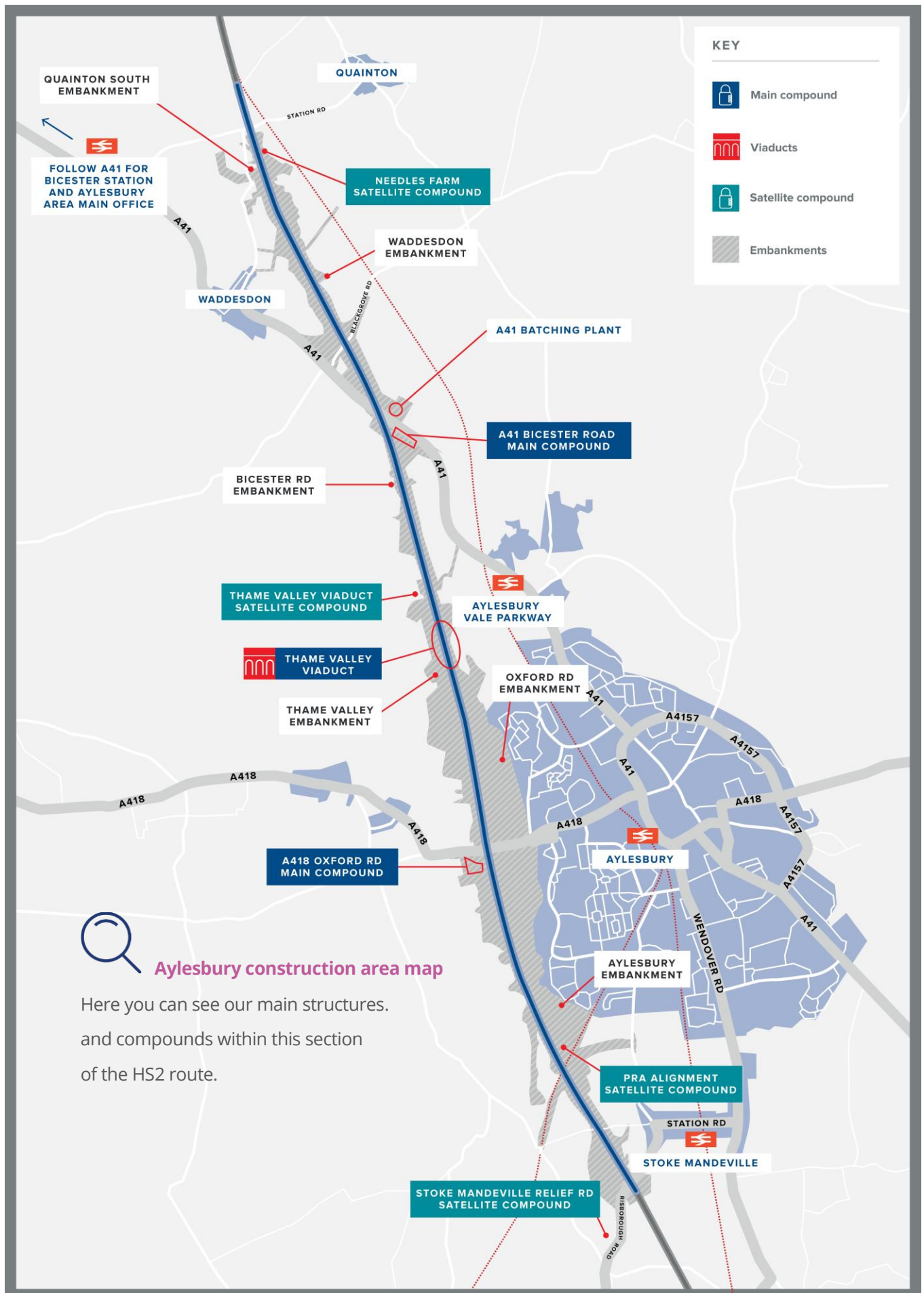
Thame Valley viaduct under construction



Newly constructed A418



Concrete deck pour at Stoke Mandeville overbridge



Keeping you informed

We are committed to keeping you informed about work on HS2. This includes ensuring you know what to expect and when to expect it, as well as how we can help you.

The Residents' Commissioner

The independent Residents' Commissioner oversees and monitors our commitments to you.

The commissioner's reports and our responses can be found at www.gov.uk/government/collections/hs2-ltd-residents-commissioner

The Residents' Commissioner makes sure we fulfil the commitments in the HS2 Community Engagement Strategy (<https://bit.ly/3oOA25j>).

The Residents' Commissioner can be contacted on: residentscommissioner@hs2.org.uk

Construction Commissioner

The independent Construction Commissioner regularly meets our Chief Executive Officer to raise any concerns or emerging trends across HS2.

The Construction Commissioner's role has been developed to monitor the way we manage and respond to construction complaints.

The commissioner mediates on disputes about construction, involving individuals and organisations, that we can't resolve. The commissioner advises members of the public about how to make a complaint about construction.

The Construction Commissioner can be contacted on: complaints@hs2-cc.org.uk

Property and compensation

You can find out about HS2 and properties along the route by visiting:

www.gov.uk/government/collections/hs2-property

Find out if you can claim compensation at:

www.gov.uk/claim-compensation-if-affected-by-hs2

Holding us to account


If you are unhappy for any reason you can make a complaint by contacting the HS2 Helpdesk. For more details on our complaints process, please visit:

www.hs2.org.uk/in-your-area/contact-us/how-to-complain/

Contact us

Contact our HS2 Helpdesk team all day, every day of the year on:

 Freephone **08081 434 434**

 Minicom **08081 456 472**

 Email **HS2enquiries@hs2.org.uk**

Write to:

FREEPOST

HS2 Community Engagement

Website **www.hs2.org.uk**

To keep up to date with what is happening in your local area, visit: **www.HS2inyourarea.co.uk**

Please contact us if you'd like a free copy of this document in large print, Braille, audio or 'easy read' format. You can also contact us for help and information in a different language.

HS2 Ltd is committed to protecting personal information. If you wish to know more about how we use your personal information please see our Privacy Notice: <https://www.gov.uk/government/publications/high-speed-two-ltd-privacy-notice>

Reference number: HS2-MW-EK-Ph1-Ar-Ce-C1-Traf-19-12/07/2024

High Speed Two (HS2) Limited, registered in England and Wales.

Registered office: Two Snowhill, Snow Hill Queensway, Birmingham B4 6GA.

Company registration number: 06791686. VAT registration number: 888 8512 56