

24/7 Freephone Community Helpline **08081 434 434**

## HS2 in Hillingdon

Summer 2024

Welcome to the latest edition of our community newsletter. This edition includes a construction update and case studies of our community investment work in the local Hillingdon area.

### Construction Update

#### Automatic Number Plate Recognition (ANPR) cameras

From March 2024 our Automatic Number Plate recognition cameras (ANPR) have been operating in the Hillingdon borough. ANPR technology means we can monitor HGV vehicles and ensure that they are using only the agreed HS2 lorry routes.

In the future, we will also be able to track vehicles to and from West Ruislip Portal, and monitor how many vehicles are entering and leaving the site.



## Harvil Road Realignment

We have realigned Harvil Road as part of the HS2 works in Hillingdon. The new road opened at the beginning of February 2024. There is a new section of road between Skip Lane and The Dogs Trust, a new entrance to Skip Lane from Harvil Road and a new bridge carrying the new road over the existing Chiltern line, making the road safer for users.

The Harvil Road realignment is essential for our works as the new road is on a raised embankment that will form part of the 'cut and cover' area of the Copthall Tunnel which will in the future see the HS2 railway travel underneath the road.



Aerial view of Harvil Road Realignment

## Tunnelling Progress

Our tunnel boring machines (TBMs) are continuing to make good progress on their journeys from the West Ruislip Portal. TBM Sushila has reached the Mandeville Road Vent Shaft, having built 3.6 miles of tunnel. TBM Caroline has now passed under Eastcote Lane and has built 3.3 miles of tunnel. TBM Caroline left Hillingdon at the end of April. Our TBMs progress at an average rate of around 150 metres a week.

We are also building cross passages approximately every 500 metres along the tunnel route, which connect the tunnels to provide a safe evacuation of trains in an emergency. We have made significant progress on this and will shortly be starting work on cross passage 27 by South Ruislip station. We expect to build the last cross passage in the borough in Autumn 2024. Both TBMs are expected to finish their tunnelling journeys at the end of the year.



Cross passages in Hillingdon





Artist's impression of Celandine Way after work completion

## River Pinn Realignment

The River Pinn re-alignment and associated works is now underway after extensive planning involving consultation with both Hillingdon Council and the Environment Agency. The footpath along the River Pinn currently runs through the HS2 site, and these works will return it to public use. The new railway bridge crossing the river clashed with the old footpath. Moving the river a few metres will allow us to rebuild the new footpath. We will also improve the river by adding a new gravel bed, new landscaping to encourage the return of wildlife, and a footpath and new footbridge to cross over to Breakspear Road South.

In May we installed a temporary dam across the river. We have been rescuing any fish, and over-pumping the water to create a dry working area. We have been clearing some of the existing ground down to starting level and removing some temporary items which were installed for the HS2 railway bridge. In June we started forming the new channel. We will also be installing an “entrenched tree” feature which will encourage smaller wildlife habitat using a nearby naturally fallen tree.

The River Pinn realignment works run approximately 75 metres downstream of the footbridge which connects footpaths U43 and U45, all the way down to the double-arch Chiltern Line Bridge, which the footpath crossed under previously.



Artist's impression of River Pinn diversion after work completion



Embankment Construction works behind River Pinn Underbridge progressing with aggregate placement and compaction



View of the River Pinn Underbridge from the south - parapets not yet installed



View of Breakspear Road South Underbridge looking from north - parapets not yet installed

## Gatemead Earthworks

Through late spring and into summer this year, local residents will start to see the emergence of an embankment stretching from Oak Farm and the River Pinn through to Gatemead. This will be a 400 metre stretch of embankment, which will eventually become level with the Chiltern line in 2025.

Our site team will continue to monitor noise and dust levels as well as observing lorry movements and mud presence. We will closely monitor the flood

compensation area in Oak Farm and continue to receive notifications from the Environment Agency on the River Pinn about any potential flood risk. This is part of a wider piece of work which will bring all embankments together. The Gatemead Embankment ties into Copthall Tunnel. Much of this work was completed by the end of 2023 and since then our team has been working on waterproofing. We installed just over 7,000 stone columns between December 2023 and March 2024.

## Community Event

On 27 March 2024 we held a community event at Ickenham United Reformed Church on Swakeleys Road. We were delighted to have 96 residents attend the event. The topics discussed included:

- Community Investment
- The River Pinn realignment
- Gatemead Embankment Earthworks

We were also able to use the occasion to present a drone footage flyover as well as having the chance to meet residents in person to discuss their feedback on the project. We will be hosting this event



Community Event at Ickenham United Reformed Church on 27 March 2024

again on Tuesday 23 July 2024 from 4 to 7pm at the same venue. A further event is planned for September. Please check the HS2 website for regular updates on planned events.

## What community investment activities have we been doing in your area?

**Community investment takes several forms, from financial funding for entire projects to material donations and workforce volunteering.**

HS2 is committed to ensuring that the Project provides benefits to the local community through community investment initiatives and funding local projects and activities.

Our community investment plan ensures that we create sustainable opportunities for growth for years to come.

We work in partnership with local authorities, schools, religious groups, and voluntary organisations in the community near to the HS2 route or those affected by road and utility works.





First Aid training at Coteford Junior School

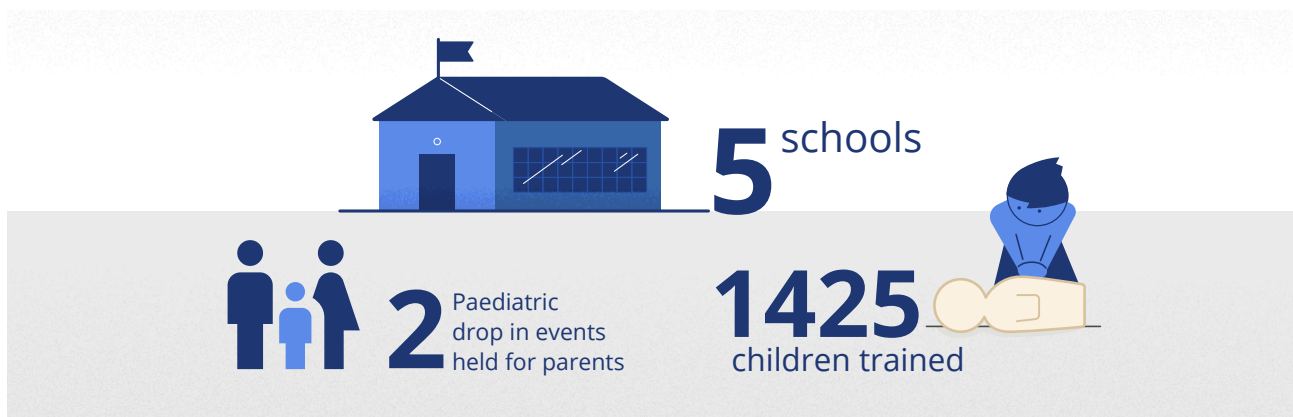
## First Aid sessions for local schools

Naomi Evans and Hannah Root from the West Delivery Unit Community Engagement team have set up a First Aid training scheme in the Hillingdon borough with the aim of delivering tailored, age appropriate First Aid training to the local community. Naomi previously worked in both the Police and Ambulance Service and is keen to use these skills to offer vital potentially lifesaving training.

The scheme was launched in November 2023, initially to local Infant and Junior Schools who have been impacted by HS2 works or tunnelling activities. Naomi and

Hannah approached schools in person offering sessions to children between the ages of three and eleven. The uptake has been hugely successful with a 100 percent response rate from the local schools that SCS has approached.

The lessons provided by SCS equip children with the necessary skills they may need in an emergency with topics including danger awareness, how to call for help and First Aid knowledge. At the end of the sessions children can familiarise themselves with equipment seen in healthcare, to ease any anxieties children may have when visiting a medical setting.





The restored replica D-Day Spitfire is located in a museum in Uxbridge

## Community & Environmental Fund and Business & Local Economy Fund

We are offering two funds that are available to local communities and businesses between the West Midlands and London, to help with the disruption caused by our construction work. These are the Community and Environment Fund (CEF) and the Business and Local Economy Fund (BLEF).

The CEF is designed to give communities the opportunity to share in the benefits of HS2. It is a distributed fund that communities can apply for, to help to support local projects that aim to improve their local area.

The BLEF is designed to support local economies that may be disrupted by the construction of HS2. BLEF grants are for local business support organisations and local authorities to help support business activity in local communities. To find out more use the QR code on this page.

A recent example of a successful project that has received CEF funding in the London Borough of Hillingdon is funding to repair the replica D-Day Spitfire which is located at the Battle of Britain Bunker Visitor Centre in Uxbridge. The Spitfire required urgent repair due to water damage which had resulted in the wing becoming partly detached from the main aircraft body. It is an integral part of the museum's daily tours. It is situated at the entrance of the Bunker and is the starting point for how they introduce the story of the Battle of Britain. The restored Spitfire will also be part of the stories and educational activities created for the 80th anniversary celebrations in 2024.

To find out more about funds and BLEF use the QR code on this page.







Flood response equipment available to residents on Breakspear Road South

## **Floodgate Response Drop-in event: Breakspear Road South**

On Thursday 23 May 2024 we held a drop-in event on Breakspear Road South. The purpose of this event was for our site team to demonstrate to local residents where to access and how to use our equipment in the event of flooding.

We have provided flood response equipment to all residents along Breakspear Road South. Equipment includes flood barriers, wheelbarrows, water pumps, extension cables, sandbags, torches and high visibility jackets. There is also a twenty-four hour emergency number on the gate which residents can call in the event of flooding

and one of our team will be on hand to offer assistance.

The event was attended by five key members of our site team who were on hand to answer any questions from residents as well as demonstrate how to correctly use the equipment.

### **Visitor Information Hub**

**Do you have questions or comments about the project?** Drop into our Visitor Information Hub for a chat with our Community Engagement team on Mondays and Wednesdays from 2 - 4 pm.

You can find us to the right of the entrance to the West Ruislip Portal HS2 site. From the West Ruislip tube station entrance/exit, cross the road and turn right until you reach the 'West Portal' sign.

# Keeping you informed

We are committed to keeping you informed about work on HS2. This includes ensuring you know what to expect and when to expect it, as well as how we can help.

## Residents' Charter and Commissioner

The Residents' Charter is our promise to communicate as clearly as we possibly can with people who live along or near the HS2 route. [www.gov.uk/government/publications/hs2-residents-charter](http://www.gov.uk/government/publications/hs2-residents-charter)

We also have an independent Residents' Commissioner whose job is to make sure we keep to the promises we make in the Charter and to keep it under constant review. Find reports at: [www.gov.uk/government/collections/hs2-ltdresidents-commissioner](http://www.gov.uk/government/collections/hs2-ltdresidents-commissioner)

You can contact the Commissioner at: [\*\*residentscommissioner@hs2.org.uk\*\*](mailto:residentscommissioner@hs2.org.uk)

## Construction Commissioner

The Construction Commissioner's role is to mediate and monitor the way in which HS2 Ltd manages and responds to construction complaints. You can contact the Construction Commissioner by emailing: [\*\*complaints@hs2-cc.org.uk\*\*](mailto:complaints@hs2-cc.org.uk)

## Property and compensation

You can find out all about HS2 and properties along the line of route by visiting: [\*\*www.gov.uk/government/collections/hs2-property\*\*](http://www.gov.uk/government/collections/hs2-property)  
Find out if you're eligible for compensation at: [\*\*www.gov.uk/claim-compensation-if-affected-by-hs2\*\*](http://www.gov.uk/claim-compensation-if-affected-by-hs2)

## Holding us to account

If you are unhappy for any reason you can make a complaint by contacting our HS2 Helpdesk team. For more details on our complaints process, please visit our website: [\*\*www.hs2.org.uk/how-to-complain\*\*](http://www.hs2.org.uk/how-to-complain)

## Contact Us

Contact our HS2 Helpdesk team all day, every day of the year on:

 Freephone **08081 434 434**

 Minicom **08081 456 472**

 Email **hs2enquiries@hs2.org.uk**

Write to:  
**FREEPOST  
HS2 Community Engagement**

Website **www.hs2.org.uk**

To keep up to date with what is happening in your local area, visit: [\*\*www.hs2.org.uk/in-your-area/local-community-webpages/hs2-in-hillingdon\*\*](http://www.hs2.org.uk/in-your-area/local-community-webpages/hs2-in-hillingdon)

**Please contact us if you'd like a free copy of this document in large print, Braille, audio or easy read. You can also contact us for help and information in a different language.**

HS2 Ltd is committed to protecting personal information. If you wish to know more about how we use your personal information please see our Privacy Notice: <https://www.gov.uk/government/publications/high-speed-two-ltd-privacy-notice>