

Notice of overnight canal and towpath closures, Oxford Canal, Wormleighton

July 2024 | www.hs2.org.uk

High Speed Two (HS2) is the new high speed railway for Britain. EKFB is working in partnership with HS2 Ltd to build the new high speed railway in your area. You can sign up for regular updates in your local area at www.hs2innorthants.co.uk.

What are we doing?

As the construction of the Oxford Canal Viaduct progresses, we will be carrying out some overnight work on the structure this summer.

The Oxford Canal and towpath will be closed overnight between bridge 127 and 128 for approximately 5 weeks from late July. For reasons of safety, these works require a stoppage on the canal and towpath. These details have been agreed with the Canal and Rivers Trust.

These works will also require some additional lighting used overnight which may be seen from the local area.

When will these works take place?

The Oxford Canal and towpath will be closed overnight, Monday to Friday, from 8pm to 6am from 22 July to 24 August 2024.

This work is subject to local authority consents and approvals.

These dates may be subject to change due to circumstances outside of our control, such as weather.

If you have a question about HS2 or our works, please contact our HS2 Helpdesk team on 08081 434 434 or email hs2enquiries@hs2.org.uk

Notification



Duration of works

Overnight, Monday to Friday, from 22 July to 24 August 2024.

Working hours:
Overnight 8pm to 6am

What to expect

Overnight activity in the area where we are working including the use of cranes and lighting.

These closures will be sign posted in advance for canal and towpath users.

What we will do

Respond promptly to any complaints and take appropriate action.

Take care to respect the community.

Notice of overnight canal and towpath closures, Oxford Canal, Wormleighton

Notification

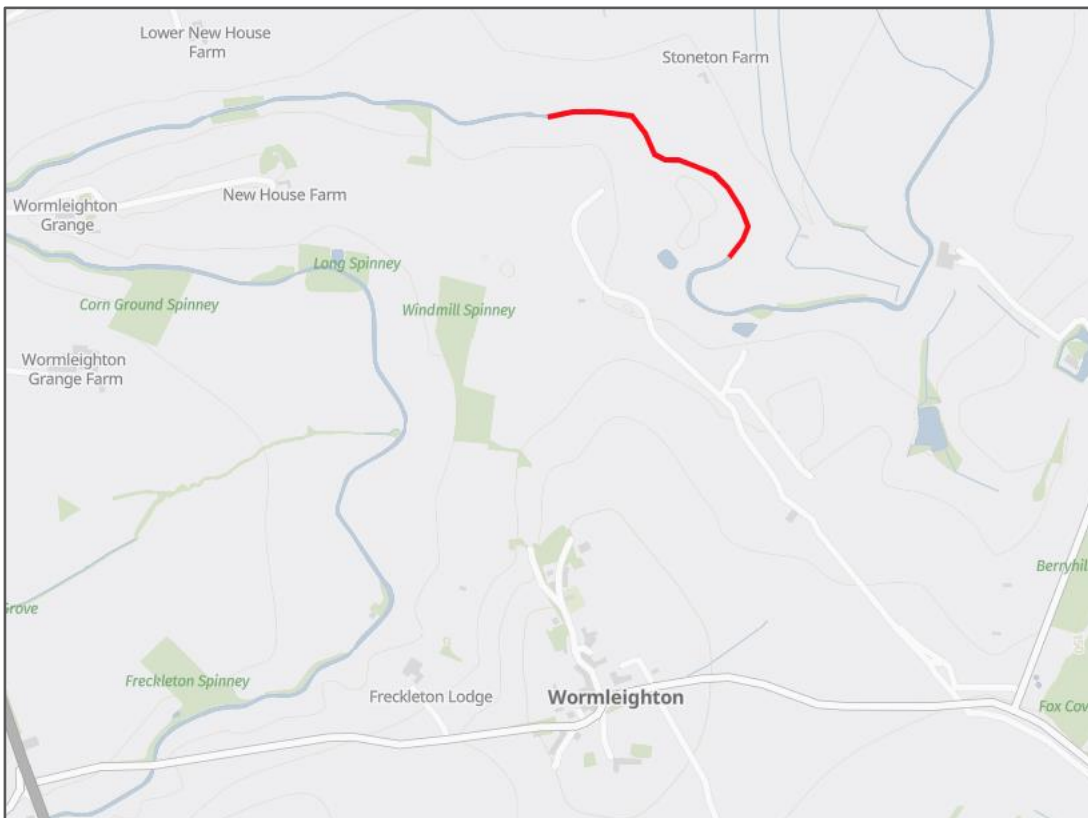


www.hs2.org.uk

Where will the works take place?

The map below shows the approximate location of the overnight canal and towpath closure. These closures will be sign posted in advance for canal and towpath users.

 The canal and towpath is closed between bridge 127 and 128.



Contact our HS2 Helpdesk team on **08081 434 434**

Keeping you informed

We are committed to keeping you informed about work on HS2. This includes ensuring you know what to expect and when to expect it, as well as how we can help.

Residents' Charter and Commissioner

The Residents' Charter is our promise to communicate as clearly as we possibly can with people who live along or near the HS2 route.
www.gov.uk/government/publications/hs2-residents-charter

We also have an independent Residents' Commissioner whose job is to make sure we keep to the promises we make in the Charter and to keep it under constant review. Find reports at:
www.gov.uk/government/collections/hs2-ltd-residents-commissioner

You can contact the Commissioner at:
residentscommissioner@hs2.org.uk

Construction Commissioner

The Construction Commissioner's role is to mediate and monitor the way in which HS2 Ltd manages and responds to construction complaints. You can contact the Construction Commissioner by emailing:
complaints@hs2-cc.org.uk

Property and compensation

You can find out all about HS2 and properties along the line of route by visiting:
www.gov.uk/government/collections/hs2-property
Find out if you're eligible for compensation at:
www.gov.uk/claim-compensation-if-affected-by-hs2

Holding us to account

If you are unhappy for any reason you can make a complaint by contacting our HS2 Helpdesk team. For more details on our complaints process, please visit our website:
www.hs2.org.uk/how-to-complain

Contact Us

Contact our HS2 Helpdesk team all day, every day of the year on:

 Freephone **08081 434 434**

 Minicom **08081 456 472**

 Email **hs2enquiries@hs2.org.uk**

Write to:

FREEPOST

HS2 Community Engagement

Website www.hs2.org.uk

To keep up to date with what is happening in your local area, visit:
www.hs2inyourarea.co.uk

Please contact us if you'd like a free copy of this document in large print, Braille, audio or easy read. You can also contact us for help and information in a different language.

HS2 Ltd is committed to protecting personal information. If you wish to know more about how we use your personal information please see our [Privacy Notice](#)

Reference number: HS2-MW-EK-Ph1-Ar-Ce-C1-Traf-10-19/06/2024

High Speed Two (HS2) Limited, registered in England and Wales.
Registered office: Two Snowhill, Snow Hill Queensway, Birmingham B4 6GA.
Company registration number: 06791686. VAT registration number: 888 8512 56.