



# Notice of overnight and weekend closures on A38 at Streethay

July 2024 | [www.hs2.org.uk](http://www.hs2.org.uk)

High Speed Two (HS2) is the new high speed railway for Britain. Balfour Beatty VINCI (BBV) is working in partnership with HS2 Ltd to build the new high-speed railway in your area.

## Work we are completing

We have started work on the A38 Overbridge that will enable HS2 trains to travel under the A38 at Streethay. As we prepare for that work, we will need to complete some piling and drainage works.

To ensure your safety, we need to close both A38 carriageways. We will always keep the road open in one direction and clearly signpost the diversion route. You can see the diversion route overleaf.

## When the work will take place

### Northbound closures

- 12 August until 15 August, 9pm until 6am, **overnight closure A38 northbound.**
- 16 August at 9pm until 19 August at 5am, **full weekend closure A38 northbound.**

### Southbound closures

- 27 August until 29 August, 9pm until 6am, **overnight closure A38 southbound.**
- 30 August at 9pm until 2 September at 5am, **full weekend closure A38 southbound.**

**If you have a question about HS2 or our works, please contact our HS2 Helpdesk team on 08081 434 434 or email [hs2enquiries@hs2.org.uk](mailto:hs2enquiries@hs2.org.uk)**

### Duration of works

#### Northbound closures

- 12 August until 15 August, 9pm until 6am, **overnight closure**
- 16 August at 9pm until 19 August at 5am, **full weekend closure**

#### Southbound closures

- 27 August until 29 August, 9pm until 6am, **overnight closure**
- 30 August at 9pm until 2 September at 5am, **full weekend closure**

Delay to journey times.

Noise and vibration from the work.

### What we will do

Install a clearly signed diversion route. Please do not follow Sat Navs.

Ask you to register with the HS2 website so we can inform you of any changes in advance via: [www.hs2.org.uk/staffordshire](http://www.hs2.org.uk/staffordshire)

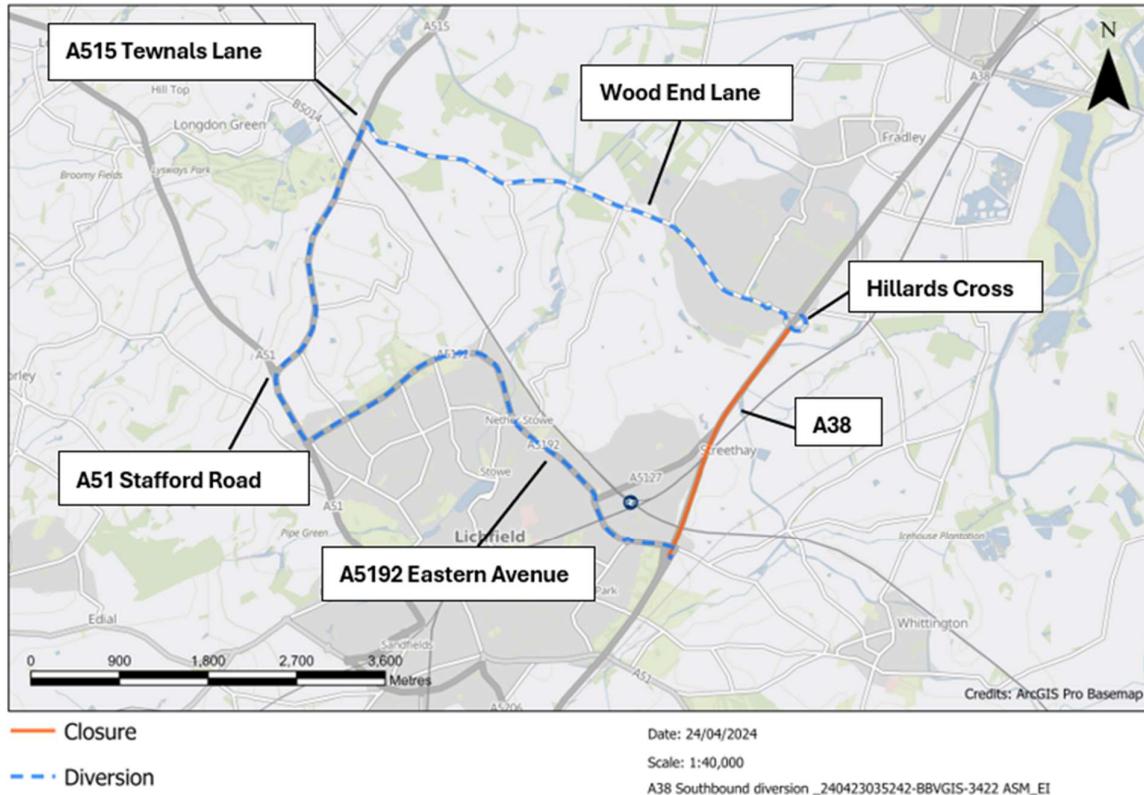
# Notice of overnight and weekend closures on A38 at Streethay

[www.hs2.org.uk](http://www.hs2.org.uk)

## A38 diversion

During our closures we will be implementing a clearly signed diversion route, shown below. The diversion route will be the same, whether the closure is northbound or southbound.

Notification



Contact our HS2 Helpdesk team on **08081 434 434**

# What else is happening in your area?

[www.hs2.org.uk](http://www.hs2.org.uk)

## Contact our HS2 Helpdesk team

Our team is here to listen and respond to your enquiry, complaint or feedback to help us be a good neighbour.

You can contact our Helpdesk team all day, every day of the year on:

Freephone: **08081 434 434**

Minicom: **08081 456 472**

Email: [hs2enquiries@hs2.org.uk](mailto:hs2enquiries@hs2.org.uk)

## Keep up-to-date with your local community website

To find out more about what's happening in your area and receive regular email updates, you can sign up to our local community websites at: [www.hs2inyourarea.co.uk](http://www.hs2inyourarea.co.uk).

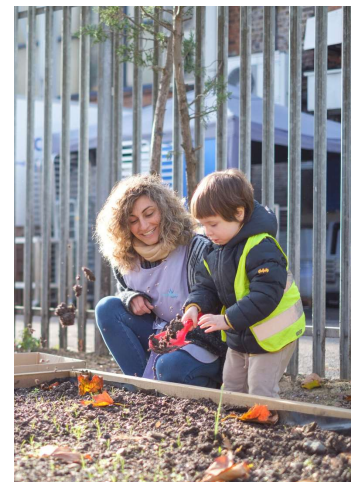
## About our Community and Business Funds

We are offering two funds that are available to local communities and businesses between the West Midlands and London, to help with the disruption caused by our construction work. These are the Community and Environment Fund (CEF) and the Business and Local Economy Fund (BLEF).

The CEF is designed to give communities the opportunity to share in the benefits of HS2. It is an allocated fund that communities are able to apply for, to help to support local projects that aim to improve their local area.

The BLEF is designed to support local economies that may be disrupted by the construction of HS2. BLEF grants are for local business support organisations and local authorities to help maintain business activity in local communities.

For more information about each of these funds, including how to apply, please visit: <https://www.groundwork.org.uk/hs2funds>



Contact our HS2 Helpdesk team on **08081 434 434**

# Keeping you informed

We are committed to keeping you informed about work on HS2. This includes ensuring you know what to expect and when to expect it, as well as how we can help you.

## The Residents' Commissioner

The independent Residents' Commissioner oversees and monitors our commitments to you.

The commissioner's reports and our responses can be found at [www.gov.uk/government/collections/hs2-ltd-residents-commissioner](http://www.gov.uk/government/collections/hs2-ltd-residents-commissioner)

The Residents' Commissioner makes sure we fulfil the commitments in the HS2 Community Engagement Strategy (<https://bit.ly/3oOA25j>).

The Residents' Commissioner can be contacted on: [residentscommissioner@hs2.org.uk](mailto:residentscommissioner@hs2.org.uk)

## Construction Commissioner

The independent Construction Commissioner regularly meets our Chief Executive Officer to raise any concerns or emerging trends across HS2.

The Construction Commissioner's role has been developed to monitor the way we manage and respond to construction complaints.

The commissioner mediates on disputes about construction, involving individuals and organisations, that we can't resolve. The commissioner advises members of the public about how to make a complaint about construction.

The Construction Commissioner can be contacted on: [complaints@hs2-cc.org.uk](mailto:complaints@hs2-cc.org.uk)

## Property and compensation

You can find out about HS2 and properties along the route by visiting:

[www.gov.uk/government/collections/hs2-property](http://www.gov.uk/government/collections/hs2-property)

Find out if you can claim compensation at:

[www.gov.uk/claim-compensation-if-affected-by-hs2](http://www.gov.uk/claim-compensation-if-affected-by-hs2)

## Holding us to account

If you are unhappy for any reason you can make a complaint by contacting the HS2 Helpdesk. For more details on our complaints process, please visit:

[www.hs2.org.uk/in-your-area/contact-us/how-to-complain/](http://www.hs2.org.uk/in-your-area/contact-us/how-to-complain/)

**Reference number:** HS2-MW-BBV-Ph1-Ar-No-N2-Traf-6-12/08/2024

High Speed Two (HS2) Limited, registered in England and Wales.

Registered office: Two Snowhill, Snow Hill Queensway, Birmingham B4 6GA.

Company registration number: 06791686. VAT registration number: 888 8512 56

## Contact us

Contact our HS2 Helpdesk team all day, every day of the year on:

 Freephone **08081 434 434**

 Minicom **08081 456 472**

 Email **[HS2enquiries@hs2.org.uk](mailto:HS2enquiries@hs2.org.uk)**

Write to:

**FREEPOST**

**HS2 Community Engagement**

Website **[www.hs2.org.uk](http://www.hs2.org.uk)**

To keep up to date with what is happening in your local area, visit: **[www.HS2inyourarea.co.uk](http://www.HS2inyourarea.co.uk)**

**Please contact us if you'd like a free copy of this document in large print, Braille, audio or 'easy read' format. You can also contact us for help and information in a different language.**

HS2 Ltd is committed to protecting personal information. If you wish to know more about how we use your personal information please see our Privacy Notice:

<https://www.gov.uk/government/publication/s/high-speed-two-ltd-privacy-notice>