

Notice of water main diversion works – A38, Streethay-Thompson Way, Lichfield WS13 8GD

January 2024 | www.hs2.org.uk

High Speed Two (HS2) is the new high speed railway for Britain. To allow for the construction of the new railway and to continue to ensure a safe and reliable water supply, South Staffs Water will be diverting an existing water main.

What are we doing

South Staffs Water will be carrying out the diversion of an existing water main. All works will be undertaken within the carriageway, near to the junction of A5127 Burton Road and Thompson Way close to the A38 northbound slip road.

In order to carry out the work safely, the existing traffic lights will be temporarily replaced with four-way lights will be in place for the duration of the works.

The work is planned to start on **26 February 2024 and is expected to last until 12 April 2024**. All the works will be undertaken between the hours of 8.00am to 6.00pm Monday to Friday and 8.00am and 1.00pm Saturday.

Once the Burton Road/Thompson Way phase is complete, then the water main diversion will continue within the existing HS2 site.

How will this affect you

The majority of vehicles being used for these works will be transit van size work vehicles, with some machinery being delivered to site using Large Goods Vehicles (LGV).

We do not anticipate the level of these traffic movements will have any significant impact on the local road network.

We have designed our works to avoid disruption to the water supplies of our customers.

If you have a question about HS2 or our works, please contact our helpdesk on 08081 434 434 or email HS2enquiries@hs2.org.uk

Notification



Duration

- From 26 February 2024 to 12 April 2024
- Our working hours will be 8.00am to 6.00pm (Monday-Friday) and 8.00am to 1.00pm (Saturday)
- We may be on site one hour, either side of these times, for set-up & close-down

What to expect

- Advanced Warning signage will be displayed two weeks prior to work starting
- Signage on the roadside where we access our worksite
- Low levels of noise from our equipment
- Temporary fencing to maintain a safe working environment.

What we will do

- Limit the amount of vehicle movements
- Maintain a safe working environment
- Inform people in advance of any changes

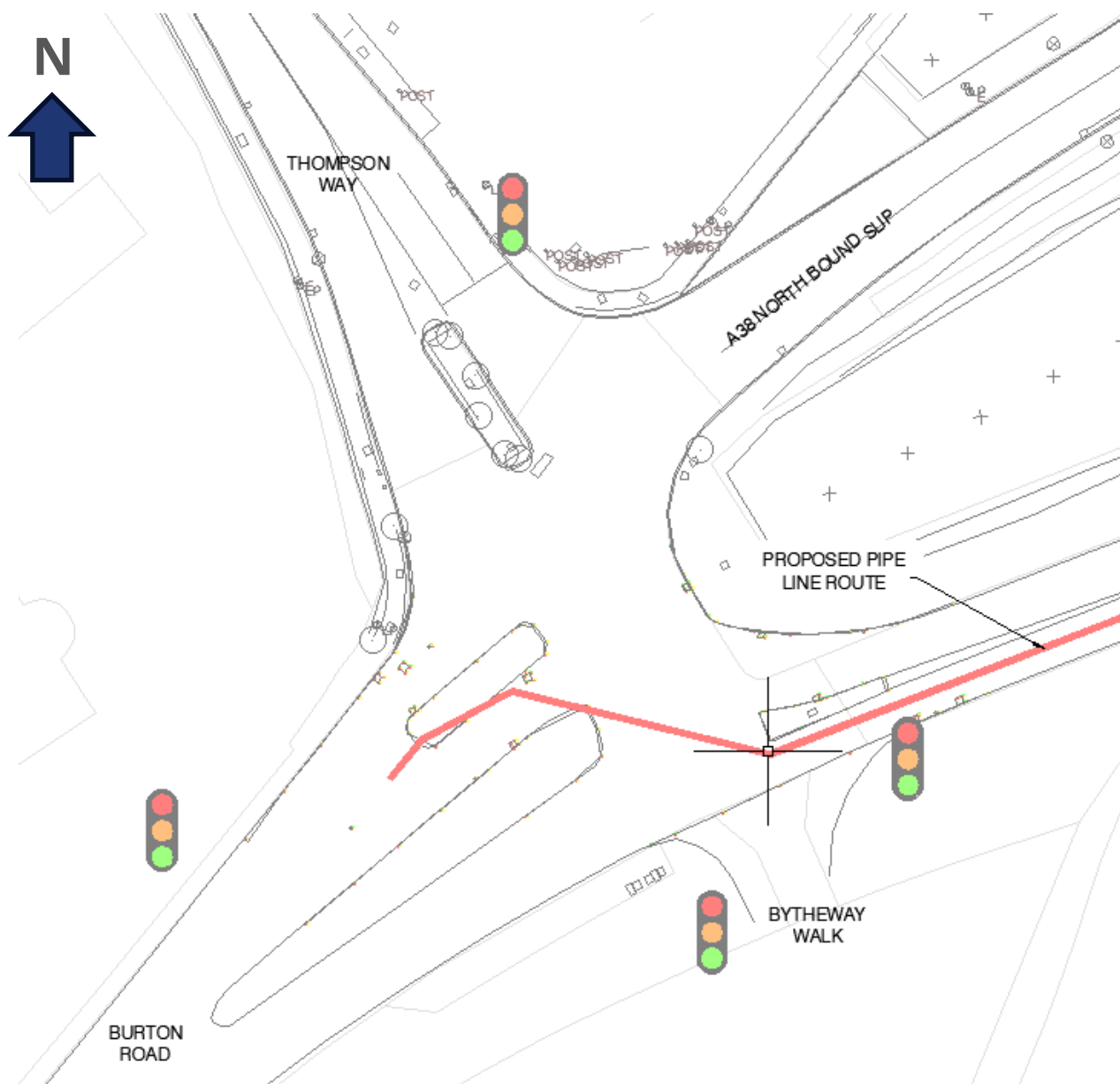
Notice of water main diversion works – A38, Streethay-Thompson Way, Lichfield WS13 8GD

www.hs2.org.uk

Notification



Location of proposed water main diversionary work to take place from 26 February until 12 April 2024.



© Crown Copyright material is reproduced with the permission of Land Registry under delegated authority from the Controller of HMSO.

What else is happening in your area?

www.hs2.org.uk

Contact our HS2 Helpdesk team

Our team is here to listen and respond to your enquiry, complaint or feedback to help us be a good neighbour.

You can contact our Helpdesk team all day, every day of the year on:

Freephone: **08081 434 434**

Minicom: **08081 456 472**

Email: hs2enquiries@hs2.org.uk

Keep up-to-date with your local community website

To find out more about what's happening in your area and receive regular email updates, you can sign up to our local community websites at: www.hs2inyourarea.co.uk.

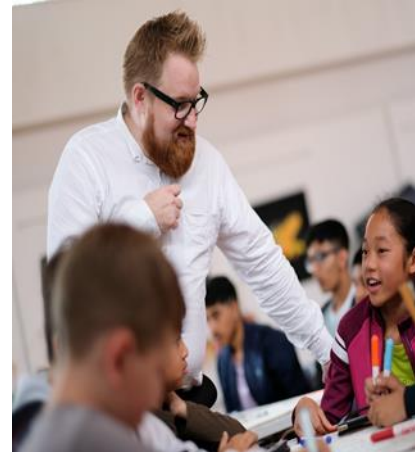
About our Community and Business Funds

We are offering two funds that are available to local communities and businesses between the West Midlands and London, to help with the disruption caused by our construction work. These are the Community and Environment Fund (CEF) and the Business and Local Economy Fund (BLEF).

The CEF is designed to give communities the opportunity to share in the benefits of HS2. It is an allocated fund that communities are able to apply for, to help to support local projects that aim to improve their local area.

The BLEF is designed to support local economies that may be disrupted by the construction of HS2. BLEF grants are for local business support organisations and local authorities to help maintain business activity in local communities.

For more information about each of these funds, including how to apply, please visit: <https://www.groundwork.org.uk/hs2funds>



Keeping you informed

We are committed to keeping you informed about work on HS2. This includes ensuring you know what to expect and when to expect it, as well as how we can help.

Residents' Charter and Commissioner

The Residents' Charter is our promise to communicate as clearly as we possibly can with people who live along or near the HS2 route.

www.gov.uk/government/publications/hs2-residents-charter

We also have an independent Residents' Commissioner whose job is to make sure we keep to the promises we make in the Charter and to keep it under constant review. Find reports at: www.gov.uk/government/collections/hs2-ltd-residents-commissioner

You can contact the Commissioner at: residentscommissioner@hs2.org.uk

Construction Commissioner

The Construction Commissioner's role is to mediate and monitor the way in which HS2 Ltd manages and responds to construction complaints. You can contact the Construction Commissioner by emailing: complaints@hs2-cc.org.uk

Property and compensation

You can find out all about HS2 and properties along the line of route by visiting: www.gov.uk/government/collections/hs2-property

Find out if you're eligible for compensation at: www.gov.uk/claim-compensation-if-affected-by-hs2

Holding us to account

If you are unhappy for any reason you can make a complaint via the helpline. For more details on our complaints process, please visit our website: www.hs2.org.uk/how-to-complain

Contact Us

If you have any questions about this notification of works, please get in touch.



24/7 Freephone **08081 434 434**



@ Minicom **08081 456 472**

Email **HS2enquiries@hs2.org.uk**

Write to:

FREEPOST

HS2 Community Engagement

Website **www.hs2.org.uk**

To keep up to date with what is happening in your local area, visit: **www.hs2.commonplace.is**

Please contact us if you'd like a free copy of this document in large print, Braille, audio or easy read. You can also contact us for help and information in a different language.

HS2 Ltd is committed to protecting personal information. If you wish to know more about how we use your personal information please see our Privacy Notice <https://www.gov.uk/government/publications/high-speed-two-ltd-privacy-notice>

Helpdesk reference: HS2-MW-UT-Ph1-Ar-NO-N1-CR-17-30/01/2024

High Speed Two (HS2) Limited, registered in England and Wales.

Registered office: Two Snowhill, Snow Hill Queensway, Birmingham B4 6GA.

Company registration number: 06791686. VAT registration number: 181 4312 30.