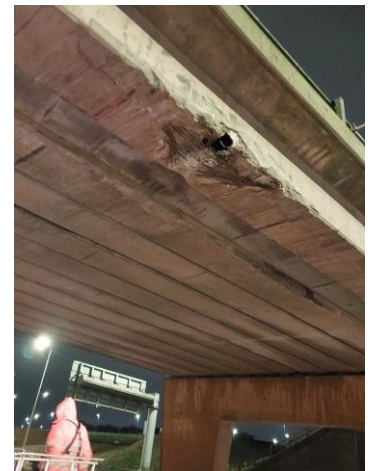


M42 Temporary Closure

The M42 between junction 6 and 9 (northbound) and junction 9 and 6 (southbound) will be temporarily closed overnight (weekdays between 29 January to 8 February) and for one weekend from 9 February to 12 February 2024.

The bridge located over the M42 motorway, which carries the A452 road over the M42 motorway, between junctions 6 and 7, was damaged by HGVs earlier in January 2024. We installed lane closures at this location to ensure road user safety.

Following an assessment of the damage we have taken the decision to demolish the M42 bridge over the weekend beginning on Friday 9 February 2024. To do this safely we will need to close the M42 motorway between junction 6 and junction 9 in both directions from 9pm on Friday 9 February to Monday 12 February 2024.



To enable the demolition of the bridge we will need to carry out preparatory work which will require the closure of the M42 motorway in both directions overnight each weeknight from:

- Monday 29 January to Friday 2 February between 10pm and 5am.
- Monday 5 February to Thursday 8 February between 10pm and 5am.

A signed diversion will be in place for road users. Please see maps on the following pages.

If work progresses faster than expected the M42 motorway will be reopened earlier, if possible.

Important: once the road closures are in place NO emergency access will be available. This is because of the nature of the work being undertaken and the carriageway being compromised until it fully reopens.

Should you require more information about this closure please contact National Highways Customer Contact Centre on:

- **0300 123 5000 (local call rate)**
- **Or email us at info@nationalhighways.co.uk**

We're available 24 hours every day.

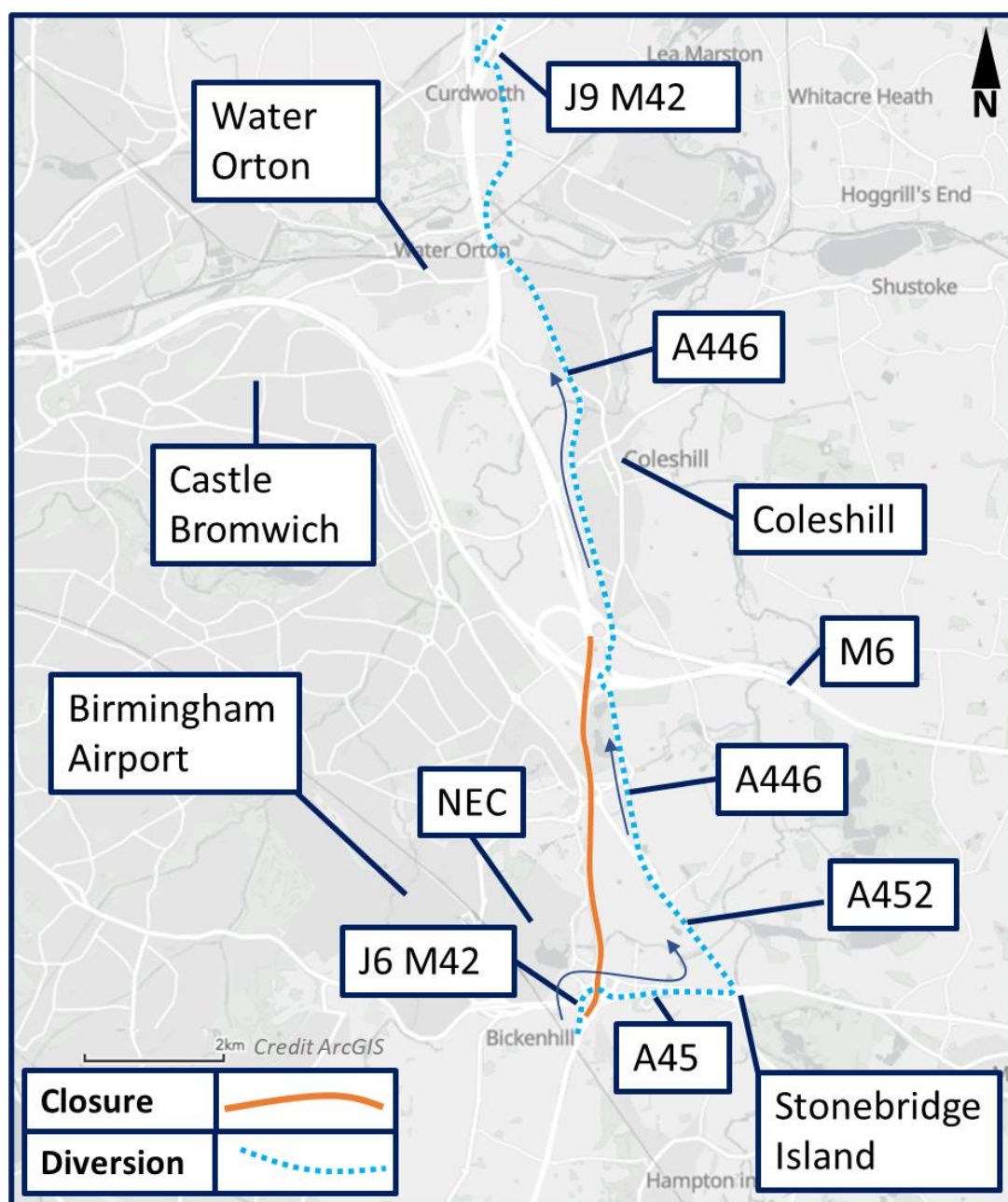
Our Customer Contact Centre will always try to resolve your complaint at the first point of contact.

Notice of temporary closure of M42 motorway

Diversion route for M42 northbound

The northbound carriageway will be closed from junction 6 to 7 including the link to the M6. There will be no impact on the M6 toll.

Leave at M42 j6 and travel Eastbound on the A45, take the first exit and head northbound on the A446 and re-join at M42 j9.



Contact the National Highways Customer Contact Centre on 0300 123 5000 (local call rate) or email us at info@nationalhighways.co.uk

Notice of temporary closure of M42 motorway

Diversion route for M42 southbound

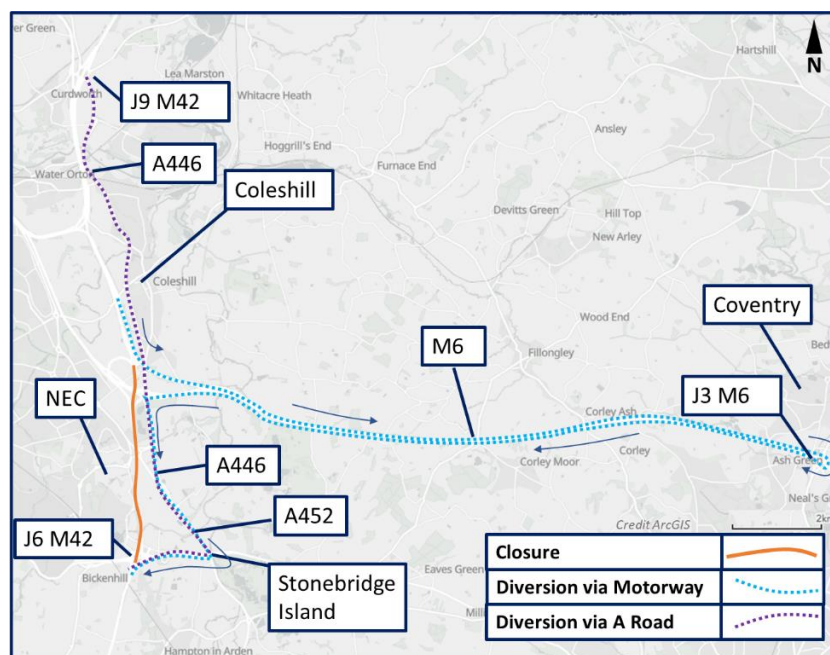
The southbound carriageway will be closed from M42 junction 9 to junction 6, together with the link arm from M6 south to M42 south and the M6 north to M42 south arm.

People travelling on the M6 wanting to access the M42 south, including those heading to the airport, NEC, Birmingham International station or Jaguar Land Rover, are advised to leave the M6 at junction 4 then head south on the A446 to Stonebridge Island and west on the A45 to join the M42 at junction 6.

Those already travelling southbound on the M42 could consider leaving the motorway at junction 9 and taking the A446 south to join either the M6 at junction 4 or the M42 at junction 6.

Diversion via A Road – Southbound traffic can exit at junction 9 and travel southbound on the A446 to M6 junction 4 Island, take the second exit to continue southbound on the A446 to Stonebridge Island, take the third exit onto the A45 eastbound and re-join the M42 at junction 6. This diversion route would offer the most direct routes to visitors to the NEC, Birmingham Airport and Resorts World.

Diversion via motorway – Road users wishing to remain on the motorway network can exit the M42 southbound via M6 southbound link, exit at junction 3 and take the fourth exit back onto the M6 northbound, down to exit on junction 4 taking the first exit onto the A446 southbound to Stonebridge Island, take the third exit onto the A45 Eastbound and re-join the M42 at junction 6.



Contact the National Highways Customer Contact Centre on 0300 123 5000 (local call rate) or email us at info@nationalhighways.co.uk