

Notification



Works in Euston Approaches January to summer 2024

December 2023 | www.hs2.org.uk

High Speed Two (HS2) is the new high speed railway for Britain.

No works from 23 December to 1 January 2024

We have planned our programme to avoid works over the Christmas period. We will not work on site or on the Network Rail tracks from **23 December to 1 January inclusive**, other than for essential maintenance or emergency works. Our site security team will be present as usual.

Euston Portal Headhouse design engagement

The Euston Portal Headhouse will provide emergency access between Granby Terrace and Mornington Street bridges. To seek your views on its design, we will hold online and in-person engagement events in January and February. Event dates and times are listed below. We will send out postcard invites with instructions on how to register by mid-January 2024.

In-person drop-in event (venue TBC)

- Tuesday 30 January, 12pm to 2pm and 5pm to 7pm

Online events

- Wednesday 31 January, 1pm to 2pm
- Thursday 1 February, 5.30pm to 6.30pm

After considering your feedback, we will finalise the design and present it at events in spring 2024.

If you have a question about HS2 or our works, please contact our HS2 Helpdesk team on 08081 434 434 or email HS2enquiries@hs2.org.uk

Duration of works

January to summer 2024

What to expect

Periods of increased noise while we continue hydro-scabbling in front of Cartmel and Coniston

Road closures on Stanhope Street and Varndell Street

Continue works to extend Granby Terrace bridge

What we will do

Use acoustic tents during noisier works to reduce the impact

Monitor our works to ensure we are working within approved noise limits

Provide updates at HS2inCamden.co.uk

Contact our HS2 Helpdesk team on **08081 434 434**

Works in Euston Approaches January to summer 2024

Notification



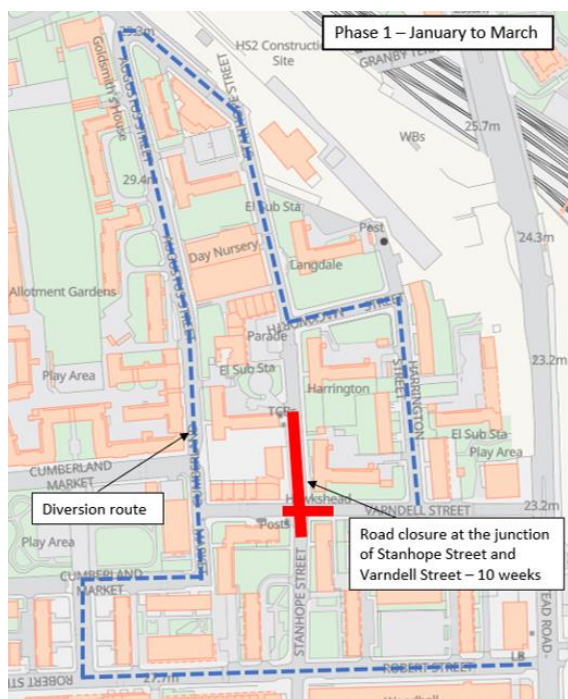
www.hs2.org.uk

Utility diversion – road closure at the junction of Varndell Street and Stanhope Street – 2 January to April 2024

We are installing a new UK Power Networks cable route from Lidlington Place to Varndell Street, to replace the existing route next to Hampstead Road. We will complete these works in two phases.

Phase 1 – from 2 January to March, we will close the road at the junction of Stanhope Street and Varndell Street to excavate and install cable ducts within the road. We will need to suspend parking bays on Stanhope Street and Varndell Street.

Phase 2 – from March, we will reduce the road closure to Stanhope Street for a further six weeks. We will need to suspend parking bays on Stanhope Street during this phase.



Traffic diversion route

Vehicles travelling between Stanhope Street and Hampstead Road will be diverted via Mackworth Street, Harrington Street and Varndell Street. Vehicles will not be able to turn left into Varndell Street from Hampstead Road. Access for pedestrians will be maintained during both phases.

Once we have finished this work, we will move onto the corner of Varndell Street and Hampstead Road. More information will be provided on these works closer to the time.

Utility works in Ampthill Estate – summer 2024

As a part of a new UK Power Networks cable route from Lidlington Place to Varndell Street, in summer 2024, we will install two new connections from the new cable route on the main road to the substations at the bottom of Gillfoot and Oxenholme. This is to maintain the power supply to the buildings, when the old route through the estate is decommissioned. We will update you nearer the time.

Contact our HS2 Helpdesk team on **08081 434 434**

Works in Euston Approaches January to summer 2024

Notification



www.hs2.org.uk

Works near Coniston and Cartmel – ongoing till summer 2024

We are currently constructing a large retaining wall onsite in front of Regent's Park Estate. This wall, which extends from Granby Terrace to Hampstead Road, will form the side of the new HS2 railway cutting.

From October 2023 we have been excavating so we can install a large concrete slab on top of the piles to form the top of the retaining wall. We are currently using a high-powered water blaster to roughen the top of the concrete piles at the bottom of the trench (hydro-scabbling). We need to do this before we build the concrete slabs, to make sure the slabs bind to the piles. We will work in sections, from Coniston towards Cartmel. We expect it will take about four months to complete all the piles.

Please note, this work can be noisy. We have covered our working area with acoustic tents and monitor the noise closely to ensure we are working within the approved limit. Once we have finished water-blasting we will start building the reinforced concrete slabs. We expect to finish building the slabs in summer 2024.

Mornington Street bridge reopening – January 2024

Network Rail and HS2 have agreed to reopen Mornington Street bridge to vehicles until tunnelling work begins (now planned to be in 2026). We plan to open the bridge in January 2024 once we have consent.

The bridge will be opened with a 3-tonne weight limit in place. We have placed width restriction barriers at both ends of the bridge to manage the weight limit. We will replace the bridge signs in the area to notify road users of the new 3-tonne weight limit. For safety reasons, Network Rail and SCS will continue to monitor the bridge whilst work continues beneath it.

Please note we will close the bridge to vehicle traffic for about five years during tunnelling works. This closure is currently planned to start in 2026. We will maintain access for pedestrians and cyclists throughout this period. We will inform you about this closer to the time.

Cavern lorry lay-by extension – spring 2024

In spring 2024 we will install a new pedestrian access to our worksite at the northern end of Park Village East. We will extend the hoarded lorry lay-by to just south of 1 Park Village East to enclose the new access and reduce the possible noise and visual impact. This access will be used 24/7 once we begin tunnelling, which is currently scheduled for 2026.

Granby Terrace bridge – new bridge deck installation – from May 2024

We will continue works to extend Granby Terrace. We plan to start building the extension for Granby Terrace bridge in May 2024.

The bridge will remain closed to the public until our works are complete, which is currently programmed for 2031. We cannot safely open the bridge to vehicles or pedestrians while carrying out major construction works in this area.

Contact our HS2 Helpdesk team on **08081 434 434**

Keeping you informed

We are committed to keeping you informed about work on HS2. This includes ensuring you know what to expect and when to expect it, as well as how we can help you.

The Residents' Commissioner

The independent Residents' Commissioner oversees and monitors our commitments to you.

The commissioner's reports and our responses can be found at www.gov.uk/government/collections/hs2-ltd-residents-commissioner

The Residents' Commissioner makes sure we fulfil the commitments in the HS2 Community Engagement Strategy (<https://bit.ly/3oOA25j>).

The Residents' Commissioner can be contacted on: residentscommissioner@hs2.org.uk

Construction Commissioner

The independent Construction Commissioner regularly meets our Chief Executive Officer to raise any concerns or emerging trends across HS2.

The Construction Commissioner's role has been developed to monitor the way we manage and respond to construction complaints.

The commissioner mediates on disputes about construction, involving individuals and organisations, that we can't resolve. The commissioner advises members of the public about how to make a complaint about construction.

The Construction Commissioner can be contacted on: complaints@hs2-cc.org.uk

Property and compensation

You can find out about HS2 and properties along the route by visiting: www.gov.uk/government/collections/hs2-property

Find out if you can claim compensation at: www.gov.uk/claim-compensation-if-affected-by-hs2

Holding us to account

If you are unhappy for any reason you can make a complaint by contacting the HS2 Helpdesk. For more details on our complaints process, please visit:

www.hs2.org.uk/in-your-area/contact-us/how-to-complain/

HS2 Reference: HS2-EW-SCS-Ph1-Ar-So-S1-Prog-Works-1-12/12/2023

Somali

Fadlan nala soo xiriir haddii bug-yarahaan bilaashka ah ku rabsid daabacad far waa-wayn, qoraalka indhoolaha, hab maqal ah ama si fudud loo akhrin karo. Waxaan xittaa macluumaadka ku bixin karnaa luqado kala duwan. Qof ayaad ka codsan kartaa inuu wakiil ka noqdo markaad la hadlayso HS2 Ltd.

Español

Póngase en contacto con nosotros en caso de que desee recibir una copia gratuita de este folleto en caracteres grandes, braille, audio o en formato de lectura fácil. También podemos proporcionar la información en distintos idiomas. No dude en pedirle a alguien que le represente en cualquier conversación con HS2, Ltd.

Français

Merci de nous contacter si vous désirez une copie de cette brochure en grands caractères, en braille, en version audio, ou en lecture simplifiée. Nous pouvons également vous fournir des informations dans différentes langues. Vous pouvez demander d'être représenté(e) par un tiers pour tout échange avec HS2 Ltd.

Bengali

যদি আপনি এই প্রচারপত্রটির বড় অক্ষরে, ব্রেইলে, অডিও বা সহজ পাঠযোগ্য বিনামূল্যের প্রতিলিপি পেতে চান তবে অনুগ্রহ করে আমাদের সাথে যোগাযোগ করুন। এছাড়াও আমরা বিভিন্ন ভাষায় তথ্য প্রদান করতে পারি। এইচএস২ লিমিটেড (HS2 Ltd.)-এর সাথে কোন আলোচনায় আপনাকে প্রতিনিধিত্ব করার জন্য আপনি কাউকে জিজ্ঞাসা করায় আপনাকে স্বাগত জানাই।

Contact us

Contact our HS2 Helpdesk team all day, every day of the year on:

 Freephone **08081 434 434**

 Minicom **08081 456 472**

 Email **HS2enquiries@hs2.org.uk**

Write to:

FREEPOST

HS2 Community Engagement

Website **www.hs2.org.uk**

To keep up to date with what's happening in your local area, visit: **www.HS2inyourarea.co.uk**

Please contact us if you'd like a free copy of this document in large print, Braille, audio or 'easy read' format. You can also contact us for help and information in a different language.

HS2 Ltd is committed to protecting personal information. If you wish to know more about how we use your personal information please see our Privacy Notice <https://www.gov.uk/government/publications/high-speed-two-ltd-privacy-notice>

High Speed Two (HS2) Limited, registered in England and Wales. Registered office: Two Snowhill, Snow Hill Queensway, Birmingham B4 6GA. Company registration number: 06791686. VAT registration number: 888 8512 56