

Contact our HS2 Helpdesk team on **08081 434 434**

HS2 Update

Colne Valley (Hertfordshire, Buckinghamshire, Hillingdon) | Autumn 2023

High Speed Two (HS2) is the new high speed railway for Britain. This quarterly newsletter contains information about the works that are underway to build the railway in your area.

Catch up with progress on the Chiltern Tunnel and Colne Valley Viaduct by joining HS2 and Align JV's Construction Webinar

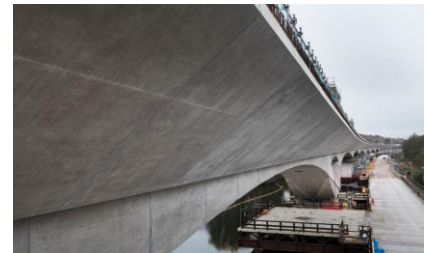
It has been a very eventful year on the C1 section of the HS2 route and great progress has been made on the construction of the Chiltern Tunnel in Buckinghamshire, the Colne Valley Viaduct between Buckinghamshire and London Borough of Hillingdon, and the landscaping of the Colne Valley Western Slopes in Hertfordshire. On 6 December we will be holding an online webinar where we will review the key milestones achieved this year and look ahead at the works to come in the new year.



The launching girder installing sections of the viaduct deck between two piers.

Whether you are a local resident, business, or simply interested in the civils works underway to build HS2 in your area, please join us from 6:30pm. The construction review will be followed by a 30-minute Question and Answer session.

To join us on the webinar please book your place online in advance at www.HS2-C1-update2023.eventbrite.co.uk.



Online webinar

Wednesday 6 December
6:30pm to 8:00pm

For further details and to book your place, please scan the QR code below.



Colne Valley Viaduct

Construction of the viaduct deck continues into Hillingdon

The team assembling the viaduct deck have now completed the section over Korda Lake in Denham, Buckinghamshire and crossed over Moorhall Road, into South Harefield in the London Borough of Hillingdon. The next milestone crossing will be when the giant viaduct girder installs the bridge deck over the Grand Union Canal in early spring 2024, at a location just to the south of Harefield Marina.

At the start of November over 500 viaduct segments had already been installed over the piers, with 1,000 segments needed to make up the viaduct in full.

We have also now completed the viaduct deck spans over the Korda Lake, one of three lake crossings. Each of the viaduct spans over the lakes have wide V-shaped piers to support longer distances between piers in the water.

Installation of parapets over A412 completed ahead of schedule

The Colne Valley Viaduct parapets – precast concrete walls either side of the viaduct deck – have been installed on the section of the viaduct deck over the A412 near to Denham Water Ski Club. Each section weighs eight tonnes and required a closure of the public highway to all road users and pedestrians.

This was done overnight over three weeks at the start of September this year and works were completed one week ahead of schedule. 48 parapets were installed on the section above the A412. 1500 will be needed along the two miles of the viaduct in total. Thank you for your patience and understanding during these works.



Launching girder crossing Moorhall Road.



Viaduct parapets installed over the A412.

Colne Valley Western Slopes

Landscaping and site restoration progress at the Chiltern Tunnel South Portal site

In September we began replacing topsoil, erecting fencing, and planting sections of the Colne Valley Western Slopes at the Chiltern Tunnel South Portal site near West Hyde, Hertfordshire.

Soil from the excavated Chiltern Tunnel has been used to create a rolling landscape, which will be seeded and planted and will eventually form part of a large calcareous grassland with public footpaths and bridleways for use by the local community.

Work to replace topsoil and fence the landscape in sections of the site are now well underway. To read more about the plans for the site visit: www.hs2.org.uk/building-hs2/environmental-sustainability/green-corridor/



Chalk from the Chiltern Tunnel is repurposed and used to create the new landscape.

Seeding and planting

We have been working with Cranfield University for the last four years on the types of plants and soil mix that will deliver the best results for the 90 hectares of grassland across the Colne Valley Western Slopes.

These studies have shown that a lime rich, but low nutrient thin soil is ideal for providing the conditions that will encourage a large variety of smaller herbs and wildflowers. Over 40 species can be found in one square metre of this grassland, including some of the UK's rarest orchids and invertebrates.

The chalky spoil removed from the tunnel boring machines (TBMs) that are digging the Chiltern Tunnel is treated and dried onsite before being applied to the landscape to create the perfect growing medium for calcareous grassland.



Soil and seeding trials on the Colne Valley Western Slopes.

Building the Porous Portals

Since early summer we have been constructing the porous portal hoods which will disperse air pressure created by the trains as they go in and out of the Chiltern Tunnel.



A Porous Portal constructed out of concrete.

The two porous portals – one for northbound, and one for southbound trains – are aligned to be slightly staggered to further reduce any noise caused by trains entering and exiting the tunnel at the same time. This design will be replicated at the North Portal, near Great Missenden, Buckinghamshire.



A support frame is used to cast the Porous Portal.

Christmas works closures

All Align's work sites and compounds in the Colne Valley will close for construction works for the Christmas period this year from the end of Friday 22 December 2023 through to Tuesday 2 January 2024.

Our security and site management teams will continue, but no construction work will take place. We wish you all a peaceful Christmas break!

Training and recruitment news

We continue to work with our supply chain to promote vacancies and opportunities to local candidates. Interested applicants can register their interest by email to careers@alignjv.com, or by visiting our careers and recruitment website at: www.alignjv.com/careers

We recently attended a career fair at Stony Dean School and hosted eight Year 10 and 12 students from Chalfont Community College on work experience. We spoke to students about the range of careers within the construction industry from community engagement to civil engineering.

Students then presented to members of the Align Project team what they had learned about the project and the careers they could aspire to in construction and engineering.

Recruitment of our next cohort of 'Year-Out' Placement undergraduates is complete, with eight new recruits from Brunel University and University of Hertfordshire.

Community Investment in the Colne Valley

In our summer newsletter we introduced you to our new charity partner, Pumpkin's Wildlife Hospital and Rehabilitation Centre (PWHRC) in Rickmansworth. PWHRC rescue and rehabilitate local wild animals.

Pumpkin's Centre grand opening

PWHRC in Rickmansworth officially opened on Thursday 26 October and we are proud to support this wonderful local charity through donations and volunteer work.

In December we will be helping to plant a hedgerow at the centre using trees to create a safe and secluded area for rescued animals to exercise in for years to come.

For further details on the fantastic work being done by Pumpkin's Wildlife Hospital and Rehabilitation Centre please visit them at:

www.thewildlifehospital.org.uk

Could you use our help?

Do you run a local community project, charity, or good cause that would benefit from some of the skills and volunteering time that our workforce has to offer?

Local projects that have benefitted from our help recently include schools and community centres in need of painting and maintenance, weed clearance in churchyards, and traffic management at local events.

Contact us by email to:
communityengagement@alignjv.com



Volunteers work to clear the new site for PWHRC.



Align's volunteers have a break for tea.

Keeping you informed

We are committed to keeping you informed about work on HS2. This includes ensuring you know what to expect and when to expect it, as well as how we can help you.

The Residents' Commissioner

The independent Residents' Commissioner oversees and monitors our commitments to you.

The commissioner's reports and our responses can be found at www.gov.uk/government/collections/hs2-ltd-residents-commissioner

The Residents' Commissioner makes sure we fulfil the commitments in the HS2 Community Engagement Strategy (<https://bit.ly/3oOA25j>).

The Residents' Commissioner can be contacted on: residentscommissioner@hs2.org.uk

Construction Commissioner

The independent Construction Commissioner regularly meets our Chief Executive Officer to raise any concerns or emerging trends across HS2.

The Construction Commissioner's role has been developed to monitor the way we manage and respond to construction complaints.

The commissioner mediates on disputes about construction, involving individuals and organisations, that we can't resolve. The commissioner advises members of the public about how to make a complaint about construction.

The Construction Commissioner can be contacted on: complaints@hs2-cc.org.uk

Property and compensation

You can find out about HS2 and properties along the route by visiting:

www.gov.uk/government/collections/hs2-property

Find out if you can claim compensation at:

www.gov.uk/claim-compensation-if-affected-by-hs2

Holding us to account

If you are unhappy for any reason you can make a complaint by contacting the HS2 Helpdesk. For more details on our complaints process, please visit:

www.hs2.org.uk/in-your-area/contact-us/how-to-complain/

Contact us

Contact our HS2 Helpdesk team all day, every day of the year on:

 Freephone **08081 434 434**

 Minicom **08081 456 472**

 Email **HS2enquiries@hs2.org.uk**

Write to:

FREEPOST

HS2 Community Engagement

Website **www.hs2.org.uk**

To keep up to date with what is happening in your local area, visit: **www.HS2inyourarea.co.uk**

Please contact us if you'd like a free copy of this document in large print, Braille, audio or 'easy read' format. You can also contact us for help and information in a different language.

HS2 Ltd is committed to protecting personal information. If you wish to know more about how we use your personal information please see our Privacy Notice: <https://www.gov.uk/government/publications/high-speed-two-ltd-privacy-notice>

Reference number: HS2-MW-Align-Ph1-Ar-Ce-C1-CR-21-28/11/2023

High Speed Two (HS2) Limited, registered in England and Wales.

Registered office: Two Snowhill, Snow Hill Queensway, Birmingham B4 6GA.

Company registration number: 06791686. VAT registration number: 888 8512 56