

Contact our HS2 Helpdesk team on **08081 434 434**

# HS2 Update

Aylesbury | Autumn 2023

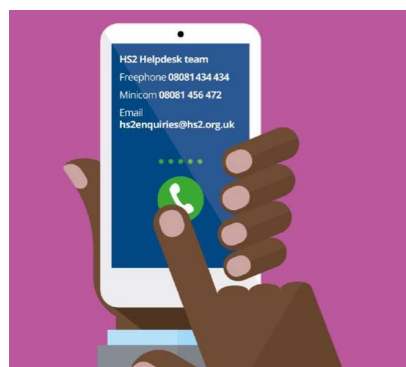
**EKFB**  
Working in  
partnership with **HS2**

High Speed Two (HS2) is the new high speed railway for Britain. Should you have any questions or enquiries regarding our works, please contact the Helpdesk details of which can be found in this newsletter. We will be keeping our local website [www.hs2inbucksandox.co.uk](http://www.hs2inbucksandox.co.uk) up to date with information on our works in the local area

## What's inside this newsletter...

In this edition of the newsletter, we are looking at what we have done so far in 2023 and what is coming up:

- Road works and closure news
- 2023 key works updates
- What's new in the area
- New aerial footage of Stoke Mandeville to Quainton
- Local community and business funds
- Community project update
- Progress pictures
- Area map



## Join us at our community events...

Over the year we run specific community events and drop-in sessions with our Mobile Visitors Centre and local village halls.

To find out where your next local event is taking place, please visit the events page on the HS2 website for the latest information.

[www.hs2.org.uk/events](http://www.hs2.org.uk/events)



## What's happening in your area?

### Updates of works from October - January 2024

Over the next few months, you can expect:

- Abnormal load deliveries for the Thame Valley viaduct occurring until the end of the year access from both A41 and A418 sites.
- A41 realignment works progressing with the road looking to open Spring 2024.
- A418 utilities work road closures and road tie in preparations for opening in Spring 2024.
- Operational use of the Risborough Road temporary bridge and mass haul of materials.
- Temporary footpath in place on the A418 until Spring 2024.
- Start of a permanent access for drainage ponds off Marsh Lane early 2024.



PRA track in construction looking south towards Stok Mandeville.

### Traffic management requirements

Throughout the next few months and into 2024, we will need to implement some temporary traffic management to ensure we can complete all necessary construction activities safely for both road users and our workforce.

Below you can see a summary of what to expect in the next couple of months in your area, further information will be communicated via email and the [HS2 website](https://www.hs2.org.uk/route-map) ([www.hs2.org.uk/route-map](https://www.hs2.org.uk/route-map)) and you can also come and see us at our events.

Location	Works	Traffic Management
A418, Oxford Road	Utility diversions	Road closure
A418, Oxford Road	Highway tie ins	Lane and full road closure
A41, Bicester Road	Highway tie ins	Lane and full road closure
A418, Oxford Road	Temporary footpath	Diversion for existing footpath

We will have a series of short duration lane and road closures over the next few months to allow us to cut the grass on our verges to ensure signage is kept visible and use of road sweepers to maintain the roads we are working on.



## 2023 key works update

There has been steady progress throughout 2023 as we hit milestones with the Thame Valley viaduct starting to take shape, rail re-alignment works and permanent new road layouts near complete.

### Thame Valley viaduct milestone

We have achieved a significant milestone in the construction of Thame Valley Viaduct (TVV) with the placement of the first of 72 giant beams. This innovative approach, where all key components are manufactured off-site, is a first for the UK.

Each beam, weighing 90 tonnes and measuring 25 metres long, is hoisted into place atop the viaduct piers. The design strategy focuses on larger hollow u-shaped beams as opposed to multiple smaller ones per span, resulting in lighter structures and streamlined construction. Additionally, it reduces our reliance on carbon-intensive materials like concrete and steel, consequently reducing the carbon footprint by approximately one-third.

The viaduct stretches 880m across River Thame's floodplain. Its design ensures a subtle presence within the landscape with an underside that sits just 3m above ground level.



Top image of the precast segments for the viaduct, bottom image for the new PRA track.

### Princes Risborough to Aylesbury re-alignment

The Princes Risborough to Aylesbury line (PRA) 10 week closure for the re-alignment has been completed to schedule. Working collaboratively with Network Rail, the new section of rail line was installed and commissioned and is now fully operational. It saw the existing line relocated to run along a new overbridge that will carry it over the HS2 line. There will be a section of temporary fencing and noise hoarding in place whilst we permanently secure the boundary of the rail line. This is anticipated to be in place early 2024. We appreciate this section of work was disturbing to some of our closest neighbours and we thank them for their patience and co-operation during this period.



Take a look at the animated construction of the PRA line by scanning the QR code!



## What's new in the area...

### A418 Realignment

We are progressing with the overbridge and realignment works at the A418 with the aim to have this completed in early spring 2024.

Throughout November and December, we will be working with the utility companies to ensure that all diversions required are completed. Alongside this we will be working on the permanent drainage for the new road as well as preparing for the surfacing, kerb installation and tie in preparations.

We will be looking at further traffic management including a temporary footpath diversion, lane and overnight closures in Spring 2024 while we work on opening the road to the public.

### A41 Realignment

2024 will see the new alignment of the A41 open for public use. As we approach the completion of this new section of road, there are still several aspects which will need finishing. Tarmac, kerbing, drainage and bridge work have been progressing and we will look to open the road in two phases. The first phasing will see the section of road from the roundabout to Blackgrove Road open and then Phase 2 will connect Blackgrove Road back down to the A41 via new roundabouts and the bridge which will carry the road over the HS2 trace. For these works to be complete, there will be some lane and full overnight closures during both of these phases, with signed diversion routes in place. We will update the communities closer to the time with the specific details around dates, times and new road layout designs.

### Abnormal loads

We will be continuing to receive deliveries of abnormal loads to our sites on the A418 and the A41. The abnormal loads will be delivered, where possible, in the evenings to limit disruption.

Temporary traffic management in the form of a lane closure or temporary traffic lights will be required for the safety of road users and our staff whilst we manoeuvre the vehicles along the road network.

### Stoke Mandeville temporary bridge

The temporary bridge which will carry our site traffic over the A4010 is now operational. This enables us to start our mass haul programme which is the movement of spoil and aggregate across the road to different work areas.

This movement of materials will continue as we build up to main earthworks season again in the spring. We will continue with the earthworks surrounding the embankment for the Stoke Mandeville Relief Road which will include landscape bunds, drainage and culvert installations and cutting for the main HS2 trace.

Eventually the A4010 will be stopped up, allowing pedestrian access under the permanent design of the bridge while road users will be encouraged to use the new relief road which connects Risborough Road up to Lower Road.

As we progress with the construction of this, we will provide full information, video animations and community drop-in sessions in 2024.

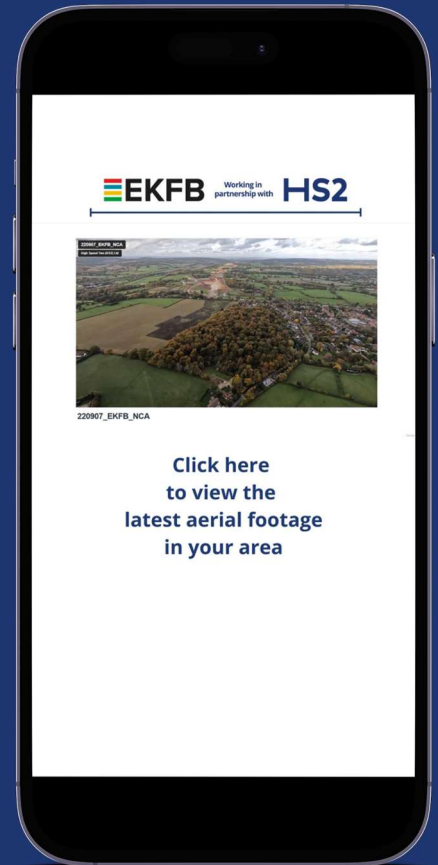
## Take a look at our aerial footage...

One of the best ways to see the progress we are making on site is from our new aerial footage. If you scan the QR code on your phone below, it will allow you to view our latest drone footage of HS2 works in your area.

The footage gives an annotated overview of where different structures will be found once HS2 is complete along with an update of how the landscaping is currently looking.



Click here, scan me or follow the link!  
[www.bit.ly/Aylesburyfootage](http://www.bit.ly/Aylesburyfootage)



## Community and Business funding

Are you a local community group or business that's looking for support from HS2?

The Community and Environment (CEF) and the Business and Local Economy Fund (BLEF) schemes will provide up to £40m of funding throughout the construction of HS2, supporting community-led projects.

The Funds also support initiatives that bring benefits to local communities, such as the provision of new community facilities or support for local heritage and culture.

You can find more information about eligibility and how to apply on the HS2 website.

Alternatively, you can get in touch with your local Community Engagement Team to find out more information and support.

[www.hs2.org.uk/in-your-area/community-funding/](http://www.hs2.org.uk/in-your-area/community-funding/)



## Community projects

We have been busy working with and volunteering for some fantastic local charities and projects in the Aylesbury Area. If you feel like we could help with a project you are working on, then please get in touch via the HS2 Helpdesk.

### EKFB in partnership with Buckinghamshire College

We have commissioned Art Students at Buckinghamshire College to create a mural in our training room at our A41 compound.

The process began with EKFB providing the students with a brief; "What is the future of construction?"

The aim was to invite the students to envision a future that embodies EKFB's core values such as leadership, respect and integrity while emphasising the pivotal role of technology and environmental sustainability in shaping the construction industry with a focus on the HS2 green corridor.

We held a site visit for all 14 students to allow them to get a better understanding of the industry, experience a working construction site and understand the work we are doing in the area.

Our panel of judges chose the winning mural that was then painted onto the training room wall to help inspire new recruits as they begin their journey at EKFB on the HS2 project.

This collaborative venture beautifully merges the creativity of our students with the vision and values of EKFB.

We are thrilled with the end project and hope to continue our work with Buckinghamshire College.

### Race the trace 2023

This year we are proud to have raised a fantastic £15,768 for a selection of local charities. The initiative was launched three years ago and our site teams go head to head to race the 80km of EKFB construction route.

Our chosen charity this year was PACE who we were proud to support in the area.



Top to bottom; EKFB PACE charity donation, Bucks College students and teachers with EKFB staff at the Thame Valley Viaduct conducting research ahead of their mural designs.

Contact our HS2 Helpdesk team on **08081 434 434**

# Progress in pictures



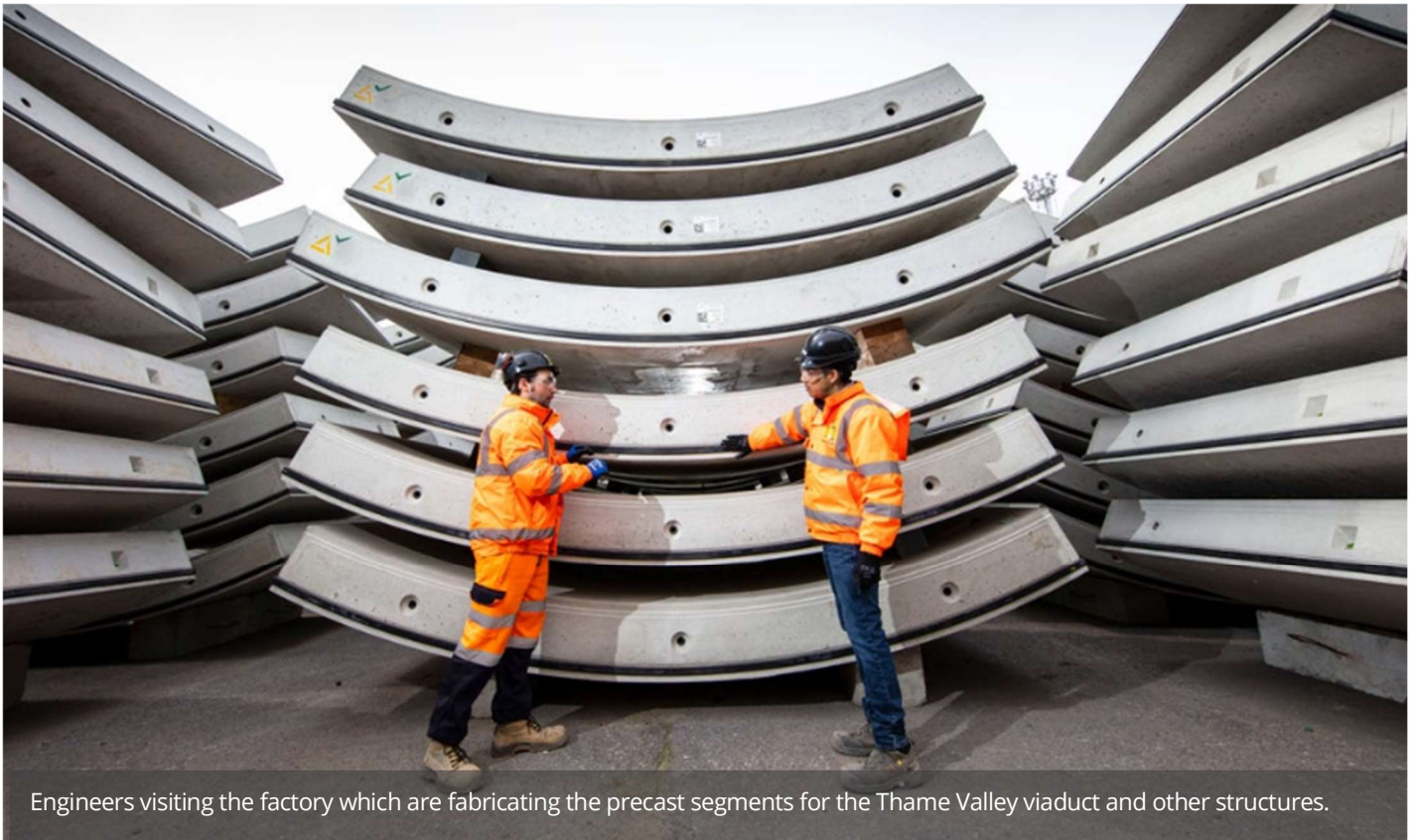
Precast concrete pier supports for the Thame Valley viaduct.



Stoning completed of the track bed for the PRA line over the new bridge.



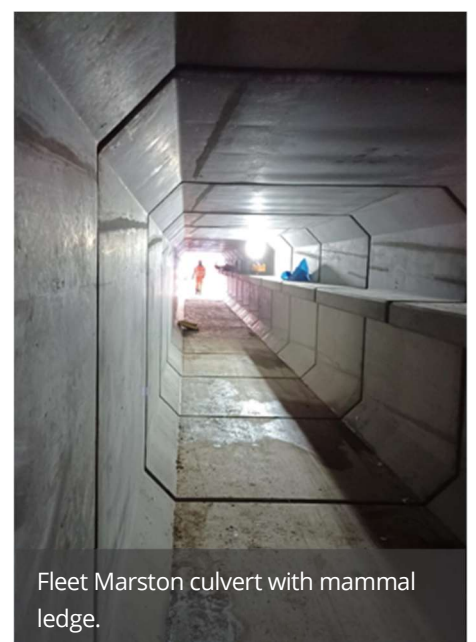
Some of the first deck beams being lifted into place for the Thame Valley viaduct.



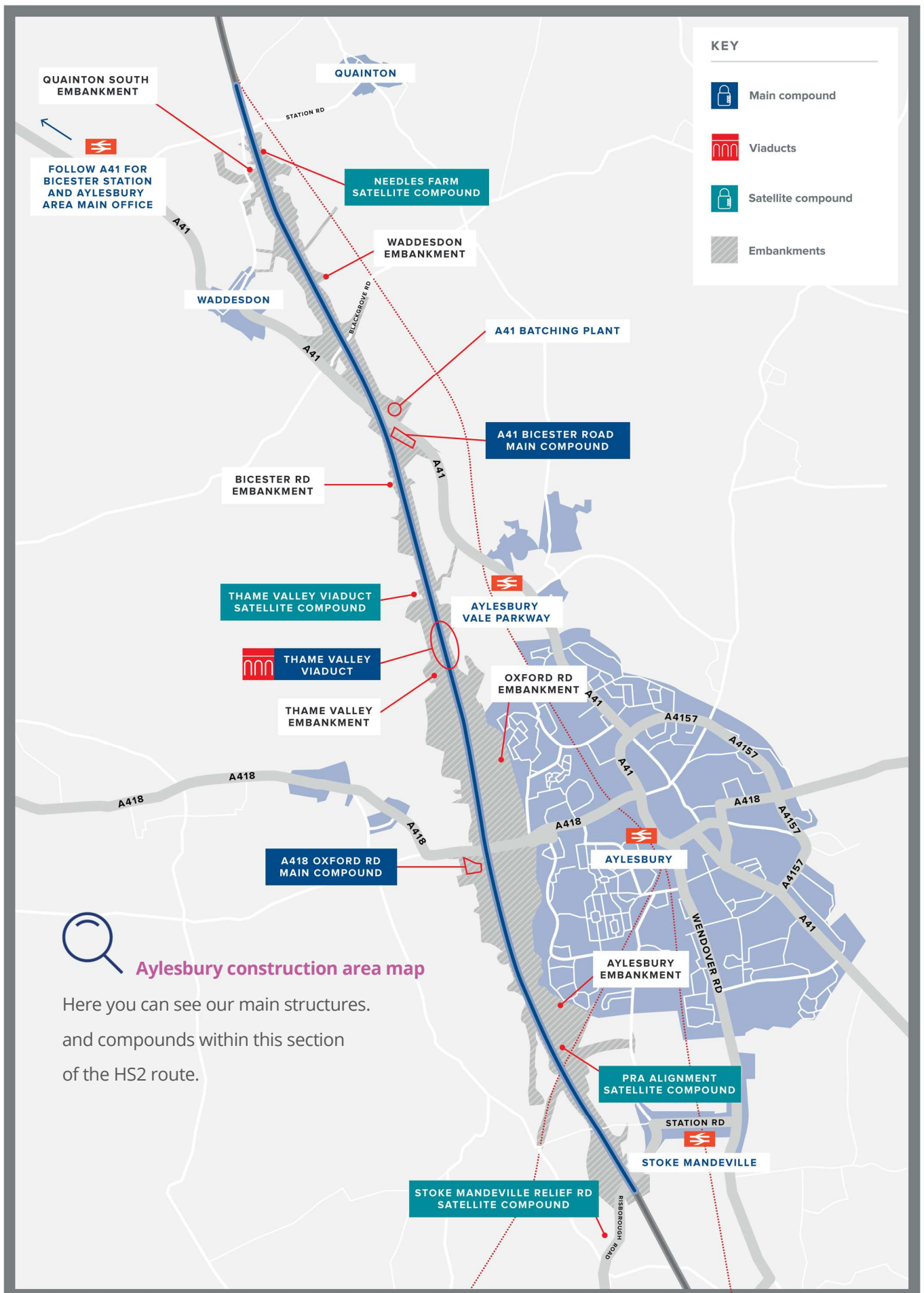
Engineers visiting the factory which are fabricating the precast segments for the Thame Valley viaduct and other structures.



Setting down the deck beams from the abnormal load deliveries for the Thame Valley viaduct.



Fleet Marston culvert with mammal ledge.



# Keeping you informed

We are committed to keeping you informed about work on HS2. This includes ensuring you know what to expect and when to expect it, as well as how we can help you.

## The Residents' Commissioner

The independent Residents' Commissioner oversees and monitors our commitments to you.

The commissioner's reports and our responses can be found at [www.gov.uk/government/collections/hs2-ltd-residents-commissioner](https://www.gov.uk/government/collections/hs2-ltd-residents-commissioner)

The Residents' Commissioner makes sure we fulfil the commitments in the HS2 Community Engagement Strategy (<https://bit.ly/3oOA25j>).

The Residents' Commissioner can be contacted on: [residentscommissioner@hs2.org.uk](mailto:residentscommissioner@hs2.org.uk)

## Construction Commissioner

The independent Construction Commissioner regularly meets our Chief Executive Officer to raise any concerns or emerging trends across HS2.

The Construction Commissioner's role has been developed to monitor the way we manage and respond to construction complaints.

The commissioner mediates on disputes about construction, involving individuals and organisations, that we can't resolve. The commissioner advises members of the public about how to make a complaint about construction.

The Construction Commissioner can be contacted on: [complaints@hs2-cc.org.uk](mailto:complaints@hs2-cc.org.uk)

## Property and compensation

You can find out about HS2 and properties along the route by visiting:

[www.gov.uk/government/collections/hs2-property](https://www.gov.uk/government/collections/hs2-property)

Find out if you can claim compensation at:

[www.gov.uk/claim-compensation-if-affected-by-hs2](https://www.gov.uk/claim-compensation-if-affected-by-hs2)

## Holding us to account

If you are unhappy for any reason you can make a complaint by contacting the HS2 Helpdesk. For more details on our complaints process, please visit:

[www.hs2.org.uk/in-your-area/contact-us/how-to-complain/](https://www.hs2.org.uk/in-your-area/contact-us/how-to-complain/)

## Contact us

Contact our HS2 Helpdesk team all day, every day of the year on:

 Freephone **08081 434 434**

 Minicom **08081 456 472**

 Email **HS2enquiries@hs2.org.uk**

Write to:

**FREEPOST**

**HS2 Community Engagement**

Website **[www.hs2.org.uk](https://www.hs2.org.uk)**

To keep up to date with what is happening in your local area, visit: **[www.HS2inyourarea.co.uk](https://www.HS2inyourarea.co.uk)**

**Please contact us if you'd like a free copy of this document in large print, Braille, audio or 'easy read' format. You can also contact us for help and information in a different language.**

HS2 Ltd is committed to protecting personal information. If you wish to know more about how we use your personal information please see our Privacy Notice: <https://www.gov.uk/government/publications/high-speed-two-ltd-privacy-notice>

**Reference number:** 1MC12-EKF-CO-NTE-CS04-000060 | HS2-MW-EK-Ph1-Ar-Ce-C1-CR-2-14/11/2023

High Speed Two (HS2) Limited, registered in England and Wales.

Registered office: Two Snowhill, Snow Hill Queensway, Birmingham B4 6GA.

Company registration number: 06791686. VAT registration number: 888 8512 56