

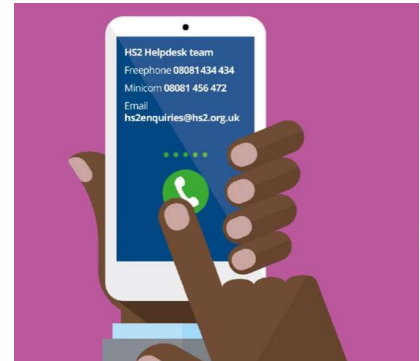
Contact our HS2 Helpdesk team on **08081 434 434**

HS2 Update

North Chilterns Area | Autumn 2023



High Speed Two (HS2) is the new high speed railway for Britain. Should you have any questions or enquiries regarding our works, please contact the Helpdesk details of which can be found in this newsletter. We will be keeping our local website **www.hs2inbucksandox.co.uk** up to date with information on our works in the local area.



What's inside this newsletter...

In this edition of the newsletter, we are looking at what we have done so far in 2023 and what is coming up:

- Roadworks and closure news
- 2023 key works update
- Online video links for the Wendover Dean viaduct
- Community project update
- What's new in the area
- New aerial footage from Great Missenden to Stoke Mandeville
- Local Community and Business Funds
- Local area map

Join us at our community events...

Over the year we run specific community events and drop in sessions with our Mobile Visitors Centre and local village halls.

To find out where your next local event is taking place, please visit the events page on the HS2 website for the latest information.

www.hs2.org.uk/events



What's happening in your area?

Update of continuing works from October 2023 - Jan 2024

Over the next few months you can expect:

- Phase one of the A413 realignment and a temporary diversion
- Wendover Dean viaduct pier construction
- Wendover green tunnel earthworks
- Rocky Lane bridge construction
- Small Dean viaduct pier construction
- The Ellesborough Road diversion opening in early 2024



Steel works being positioned for the Wendover Dean viaduct.

Traffic management requirements

Throughout November, December and January we will need to implement some temporary traffic management to ensure we can complete all necessary construction activities safely for both road users and our workforce.

Below you can see a summary of what to expect in the next couple of months in your area, further information will be communicated via email and the [HS2 website \(www.hs2.org.uk/route-map\)](http://www.hs2.org.uk/route-map) and you can also come and see us at our events.

Location	Works	Traffic Management
Ellesborough Road, Wendover	Temporary diversion works	Road closure
Nash Lee Road, Wendover	Bridge maintenance	Lane and overnight closure
A413 London Road, Small Dean	Temporary road construction, tarmacking, kerbs and drainage	Multiple lane and overnight road closures

We will have a series of short duration lane and road closures over the next few months to allow us to cut the grass on our verges to ensure signage is kept visible and use of road sweepers to maintain the roads we are working on them.



2023 key works updates

There has been steady progress throughout 2023 as we hit milestones with temporary roads opening and main structures starting to take shape.

Small Dean viaduct pier construction and A413 London Road diversion

We are progressing with phase one of the A413 road realignment and piling for the Small Dean viaduct.

We have only three piers left to complete the piling works on, which sit in the main carriageway of the existing alignment of the A413 London Road.

We are currently working on preparing the realignment so we can open the first diversion of the carriageway. We have some upcoming overnight full closures in November and December with the opening set to be January 2024.

Wendover Dean viaduct

We have been taking deliveries into site over the past few months of some of the 25m long steel beams which will form the double composite structure of the viaduct, a technique which uses significantly less carbon in comparison to more traditional designs.

Alongside this, we have also been completing all the preliminary piling works, started the construction of the piers and will soon be lifting into place the 'hammerhead' top sections of the viaduct piers which the deck structure will be built upon.

To help demonstrate how we build the viaduct, we have created an animation which breaks down the mechanics of our construction.



Did you know...

There are several videos on the HS2 YouTube channel which show the progress as we build the railway. Take a look at our engineers talking through the design and use of the steel beams for the Wendover Dean viaduct click here...



Or simply scan this QR code to go directly to the video!



Take a look at the animated construction of the viaduct by scanning the QR code!



Community projects

We have been busy working with and volunteering for some fantastic local charities and projects in the North Chilterns Area. If you feel like we could help with a project you are working on, then please get in touch via the HS2 Helpdesk. Details of how to contact us can be found on the last page of this newsletter.

Race the trace 2023

This year we are proud to have raised a fantastic £15,768 for a selection of local charities. The initiative was launched three years ago and our site teams go head to head to race the 80km of EKFB construction route. Our chosen charity this year was PACE who we were proud to support in the area.

TBM Patricia

We welcomed students from John Collet school, Wendover onto site as we officially launched our mini TBM (Tunnel Boring Machine). We ran a local competition where the students named the TBM 'Patricia', after the former landlady of The Pack Horse pub. The students and members of Patricia's family launched the TBM to bore the Bowood culvert, a 220m long drainage tunnel which it has now just completed its journey!

Rail safety lesson for Great Missenden students

Rail safety is an important topic we are passionate to educate students on. We held a special assembly for 450 pupils in Great Missenden where we highlight the dangers of railways but also the message about how it is a sustainable way to travel across the country. There were sessions aimed at primary and nursey age students who participated in learning about protective clothing, staying behind the yellow line and platform safety and also enjoyed making Lego trains!



Top to bottom; Patricia the TBM and John Collet students. Students in Great Missenden learning about Rail safety, and the EKFB PACE charity donation.

What's new in the area...

Ellesborough Road, Wendover, temporary diversion

We are on the final stages of completing the diversion road. We have some final utilities diversions to complete as well as the kerbing and tarmacking and we will be looking to open the road to the public in early 2024.

The newly diverted road will go around the back of the existing houses on Ellesborough Road and will include a bridge to allow our site traffic to pass underneath without impacting the public road. With this in place, the disruption on this road will decrease as we continue with the construction of the Wendover green tunnel.



Work on the beehives being installed at our Nash Lee site.

Great British Bee Project

Last year we announced our unique partnership with the Great British Bee Project (GBBP) to protect and expand populations of the endangered British Black Bee - Britain's only native honeybee species - across the UK.

We have installed beehives across the HS2 Stoke Mandeville and Nash Lee Road compounds.

Our involvement, not only protects and supports the vital role that this threatened species plays in our ecosystem, but also contributes to the preservation of these amazing pollinators. By creating bee-friendly habitats and raising awareness, we're protecting and supporting the vital role that bees play in our ecosystem.

To help support all pollinators within the area, we have also been supplying wildflower seeds at our community events which can be taken home, planted and will help play a part in supporting this initiative.

Abnormal Load deliveries

We will be continuing with our abnormal load deliveries into 2024. We have currently been receiving deliveries into our Great Missenden compound but we will now also be receiving them at our A413 Small Dean and Wendover green tunnel compounds as we bring in materials for the Stoke Mandeville overbridge and the Small Dean viaduct. We will endeavour to work overnight but there may be some daytime deliveries which require some short-term traffic management which will be immediately removed once we have manoeuvred the vehicles safely into site.

EKFB aerial footage

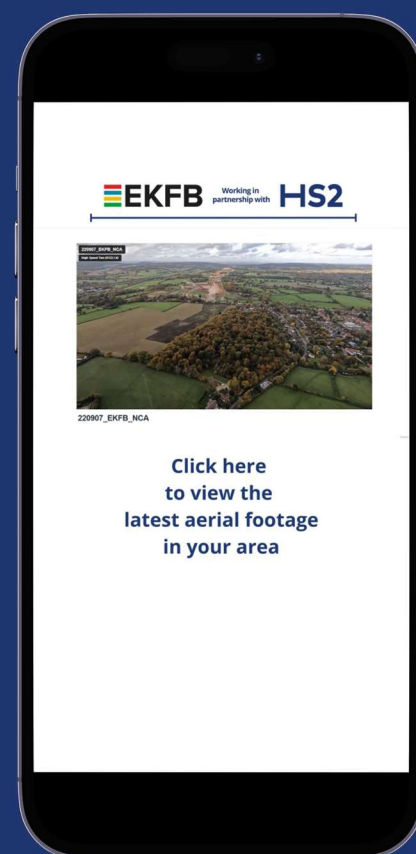
One of the best ways to see the progress we are making on site is from our aerial footage. If you scan the QR code on your phone below, it will allow you to view the latest HS2 works in your area.

The footage gives an annotated overview of where different structures will be found once HS2 is complete, along with an update of how the landscaping is currently looking.



**Click here, scan me
or follow the link below!**

www.bit.ly/NCADroneFootage



Community and Business funding

Are you a local community group or business that's looking for support from HS2?

The Community and Environment (CEF) and the Business and Local Economy Fund (BLEF) schemes will provide up to £40m of funding throughout the construction of HS2, supporting community-led projects.

The Funds also support initiatives that bring benefits to local communities, such as the provision of new community facilities or support for local heritage and culture.

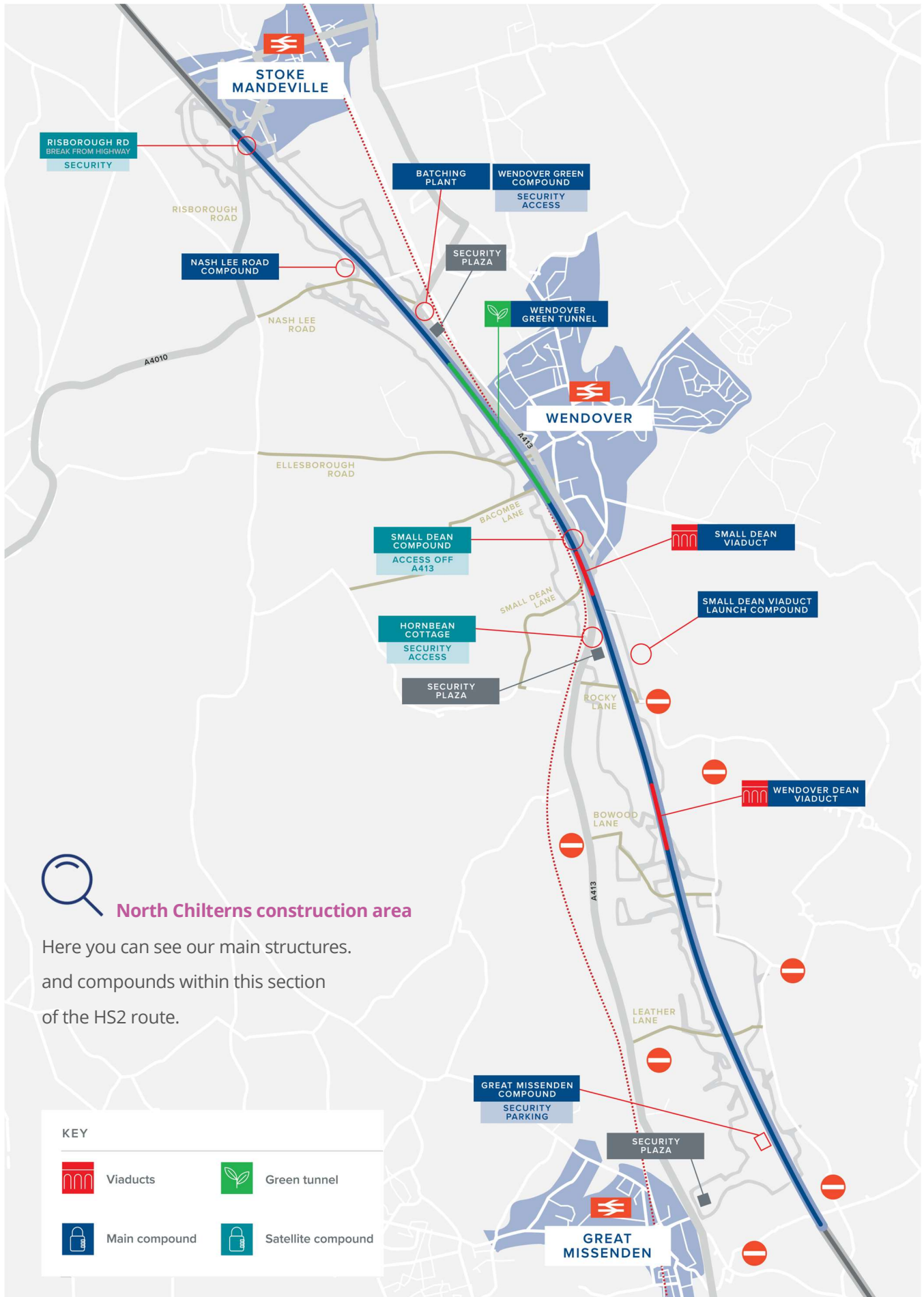
You can find more information about eligibility and how to apply on the HS2 website.

Alternatively, you can get in touch with your local Community Engagement Team to find out more information and support.

www.hs2.org.uk/in-your-area/community-funding/



North Chilterns Area map



Keeping you informed

We are committed to keeping you informed about work on HS2. This includes ensuring you know what to expect and when to expect it, as well as how we can help you.

The Residents' Commissioner

The independent Residents' Commissioner oversees and monitors our commitments to you.

The commissioner's reports and our responses can be found at www.gov.uk/government/collections/hs2-ltd-residents-commissioner

The Residents' Commissioner makes sure we fulfil the commitments in the HS2 Community Engagement Strategy (<https://bit.ly/3oOA25j>).

The Residents' Commissioner can be contacted on: residentscommissioner@hs2.org.uk

Construction Commissioner

The independent Construction Commissioner regularly meets our Chief Executive Officer to raise any concerns or emerging trends across HS2.

The Construction Commissioner's role has been developed to monitor the way we manage and respond to construction complaints.

The commissioner mediates on disputes about construction, involving individuals and organisations, that we can't resolve. The commissioner advises members of the public about how to make a complaint about construction.

The Construction Commissioner can be contacted on: complaints@hs2-cc.org.uk

Property and compensation

You can find out about HS2 and properties along the route by visiting:

www.gov.uk/government/collections/hs2-property

Find out if you can claim compensation at:

www.gov.uk/claim-compensation-if-affected-by-hs2

Holding us to account

If you are unhappy for any reason you can make a complaint by contacting the HS2 Helpdesk. For more details on our complaints process, please visit:

www.hs2.org.uk/in-your-area/contact-us/how-to-complain/


Reference number: 1MC12-EKF-CO-NTE-CS03-00000 | HS2-MW-EK-Ph1-Ar-Ce-C1-CR-1-14/11/2023

High Speed Two (HS2) Limited, registered in England and Wales. Registered office: Two Snowhill, Snow Hill Queensway, Birmingham B4 6GA. Company registration number: 06791686. VAT registration number: 888 8512 56

Contact us

Contact our HS2 Helpdesk team all day, every day of the year on:

 Freephone **08081 434 434**

 Minicom **08081 456 472**

 Email **HS2enquiries@hs2.org.uk**

Write to:

FREEPOST

HS2 Community Engagement

Website

To keep up to date with what is happening in your local area, visit: **www.HS2inyourarea.co.uk**

Please contact us if you'd like a free copy of this document in large print, Braille, audio or 'easy read' format. You can also contact us for help and information in a different language.

HS2 Ltd is committed to protecting personal information. If you wish to know more about how we use your personal information please see our Privacy Notice:

<https://www.gov.uk/government/publications/high-speed-two-ltd-privacy-notice>