

Contact our HS2 Helpdesk team on **08081 434 434**

# HS2 Update

Old Oak and North Acton | Summer 2023

High Speed Two (HS2) is the new high speed railway for Britain. Phase One of HS2 - from London to the West Midlands - is now well into its main construction stage, including tunnels and ventilation shafts between Euston and Hillingdon, and a new station at Old Oak Common.

Our contractors Balfour Beatty Vinci Systra (BBVS) and Skanska Costain STRABAG joint Venture (SCSJV) are continuing works in Old Oak and North Acton to build the new railway.



HS2 Tunnel Boring Machine

## Tunnel Boring Machine launch

In April 2023, the Tunnel Boring Machine (TBM) for the excavation of the logistics tunnel was officially launched at the HS2 Atlas Road site in North Acton.

We expect the TBM to take approximately six months to reach its destination at the Old Oak Common Station site on Old Oak Common Lane.

Once complete, the logistics tunnel will help reduce the number of lorries using local roads by providing a dedicated underground route for transporting excavated materials and tunnel segments.

One of the most remarkable features of the logistics tunnel construction is the TBM responsible for excavating it.

As with the blessing of ships, TBMs are generally given a female name before they can start tunnelling, granting good fortune for the works ahead. This tradition dates to the 1600s when St Barbara became the patron saint for miners.

The logistics tunnel TBM has been christened Lydia, in honour of a former teacher at Old Oak Primary School and dedicated volunteer at the Old Oak community centre.

## Newsletter Highlights

- Construction progress in the Old Oak and North Acton area
- HS2 Community and Environment Fund (CEF)
- Grand Union Canal Volunteering Day
- Women's Open Day
- Bubble & Squeak Holiday camp visit
- Park Royal Craft Fair and HS2 clay



# Construction progress in the Old Oak and North Acton area

## Conveyor network in Old Oak and Park Royal

Our 1.7-mile-long network of conveyors has begun operating at our sites and will move over five million tonnes of spoil excavated for the construction of HS2. The conveyor will remove the need for one million lorry movements from roads in West London, reducing traffic congestion and emissions in the local area.

The conveyor network has three spurs serving the Old Oak Common station site, the Victoria Road Crossover box site and the Atlas Road site. At Old Oak Common, the conveyor will remove the 1.5 million tonnes of spoil that is being excavated for the station box, the subsurface structure in which the HS2 platforms will be constructed.

The conveyors meet at the HS2 Logistics Hub at Willesden Euro Terminal, and the materials they carry are taken away from the area by train and used at other sites.

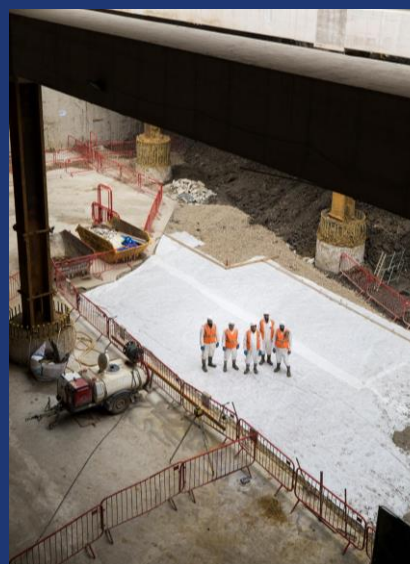


The BBVS conveyor

## Old Oak Common Station

Construction of HS2's station at Old Oak Common is continuing at pace, with the station box taking shape as workers complete the first base slab concrete pour at the western end of the station.

The 850m station box reaches 20m below ground and is where the six platforms for HS2 trains will be located. The first base slab concrete pour comes after the excavation of approximately 80,000 cubic metres of spoil.



Start of the concrete pour in the HS2 Station base slab

## HS2 Community Environment Fund

The Community and Environment Fund (CEF) has been created to benefit communities along the HS2 route that are disrupted by its construction, to help create a positive legacy.

The CEF funded playground for Wormwood Scrubs was recently installed, pictured on the right.



The new playground equipment in Wormwood Scrubs



We are pleased to announce that three organisations in the area have been awarded a grant from the HS2 Community & Environment Fund.

Three awards have been made to Urbanwise London; Kenmont Primary School; and Acton Play Projects Leisure & Events (A.P.P.L.E).

If you would like to find out more about HS2's Community and Business Funds, you can contact Groundwork by email at [HS2funds@groundwork.org.uk](mailto:HS2funds@groundwork.org.uk).



## Women's Open Day

In February, we hosted a Women's Open Day at Old Oak Common Station site. The aim of the day was to inspire and encourage women of all backgrounds and ages to join the construction industry, as well as raising awareness about to the range of careers available in construction.

In total, 40 people from the local community attended this event, including girls from St Claudine's Catholic School for Girls, and family and friends of colleagues working at Old Oak Common. One individual travelled all the way from Edinburgh to attend the event!

The event was an opportunity to break down the barriers, showcase what working in construction is really like and provide guidance for women interested in entering the industry.



Women's Open Day at Old Oak Common Station Visitor Centre



## Bubble & Squeak holiday camp visit

Old Oak Common welcomed children from a holiday camp run by Bubble & Squeak, a local group supporting communities in East Acton.

The children, all aged between 5 and 12, spent the afternoon learning how construction supports other jobs and industries using *When I Grow Up* - a book written by Rich Smith to inspire school children and engage with STEM subjects from a young age.



Holiday camp children on the Old Oak Common Station viewing platform

## Park Royal Craft Fair and HS2 clay

In March, four tonnes of London clay from Old Oak Common were donated to Park Royal Design District for use by artists involved in a new project, called Park Royal Clay.

Six artists, including two commissioned by HS2 Arts and Culture team, have developed a range of work using London clay. These works were exhibited at the Park Royal Craft Fair 2023, part of London Craft Week.

One of the projects, Absolute Beginners, is teaching young residents how to create and sell their own clay art. The young people attended site to present their works to a team of senior staff in a Dragons Den-style event on 19 June.

See more about the project here:

<https://www.parkroyaldesigndistrict.com/craft-fair-2023>



HS2 clay on display at the Park Royal Craft Fair 2023

## Grand Union Canal Volunteering Day

In May, staff from HS2's local contractors BBVS and SCSJV volunteered to take part in a litter pick at the Grand Union Canal.

Volunteers first had to cut back branches and bushes to clear the way for their litter pick. By the end of the pick, they had collected 50 bags of rubbish, improving the cleanliness and appearance of the canal. Their efforts also restored access to benches for visitors to enjoy.

The BBVS and SCSJV volunteers' hard work and determination have preserved the beauty of our local environment, creating a cleaner and more welcoming space for everyone to enjoy.



The Grand Union Canal after the litter pick



# Keeping you informed

We are committed to keeping you informed about work on HS2. This includes ensuring you know what to expect and when to expect it, as well as how we can help you.

## The Residents' Commissioner

The independent Residents' Commissioner oversees and monitors our commitments to you.

The commissioner's reports and our responses can be found at [www.gov.uk/government/collections/hs2-ltd-residents-commissioner](http://www.gov.uk/government/collections/hs2-ltd-residents-commissioner)

The Residents' Commissioner makes sure we fulfil the commitments in the HS2 Community Engagement Strategy (<https://bit.ly/3oOA25j>).

The Residents' Commissioner can be contacted on: [residentscommissioner@hs2.org.uk](mailto:residentscommissioner@hs2.org.uk)

## Construction Commissioner

The independent Construction Commissioner regularly meets our Chief Executive Officer to raise any concerns or emerging trends across HS2.

The Construction Commissioner's role has been developed to monitor the way we manage and respond to construction complaints.

The commissioner mediates on disputes about construction, involving individuals and organisations, that we can't resolve. The commissioner advises members of the public about how to make a complaint about construction.

The Construction Commissioner can be contacted on: [complaints@hs2-cc.org.uk](mailto:complaints@hs2-cc.org.uk)

## Property and compensation

You can find out about HS2 and properties along the route by visiting:

[www.gov.uk/government/collections/hs2-property](http://www.gov.uk/government/collections/hs2-property)

Find out if you can claim compensation at:

[www.gov.uk/claim-compensation-if-affected-by-hs2](http://www.gov.uk/claim-compensation-if-affected-by-hs2)

## Holding us to account

If you are unhappy for any reason you can make a complaint by contacting the HS2 Helpdesk. For more details on our complaints process, please visit:

[www.hs2.org.uk/in-your-area/contact-us/how-to-complain/](http://www.hs2.org.uk/in-your-area/contact-us/how-to-complain/)

## Contact us

Contact our HS2 Helpdesk team all day, every day of the year on:

 Freephone **08081 434 434**

 Minicom **08081 456 472**

 Email **HS2enquiries@hs2.org.uk**

Write to:

**FREEPOST**

**HS2 Community Engagement**

Website: [www.hs2.org.uk](http://www.hs2.org.uk)

To keep up to date with what is happening in your local area, visit:  
**[www.HS2inyourarea.co.uk](http://www.HS2inyourarea.co.uk)**

**Please contact us if you'd like a free copy of this document in large print, Braille, audio or 'easy read' format. You can also contact us for help and information in a different language.**

HS2 Ltd is committed to protecting personal information. If you wish to know more about how we use your personal information please see our Privacy Notice: <https://www.gov.uk/government/publications/high-speed-two-ltd-privacy-notice>

**Reference number: HS2-MW-BBVS-Ph1-OOC-So-S1-CR-6-22/05/2023**

High Speed Two (HS2) Limited, registered in England and Wales.

Registered office: Two Snowhill, Snow Hill Queensway, Birmingham B4 6GA.

Company registration number: 06791686. VAT registration number: 888 8512 56