

Contact our HS2 Helpdesk team on **08081 434 434**

HS2 Update

North Chilterns Area | Q2 2023



High Speed Two (HS2) is the new high speed railway for Britain. Should you have any questions or enquiries regarding our works, please contact the Helpdesk details of which can be found in this newsletter. We will be keeping our local website www.hs2inbucksandbox.co.uk up to date with information on our works in the local area.



What's inside this newsletter...

In this edition of the newsletter, we are looking at what we have done so far in 2023 and what is coming up:

- Roadworks and closure news
- Updates on works so far in 2023
- The opening of the Great Missenden Village improvement project
- Chalk delivery to Lindengate charity
- Ecology focus
- What's coming up in your area
- New aerial footage from Great Missenden to Stoke Mandeville
- Meet the Team events
- Spotlight on Nash Lee Road and Nash Lee Lane diversions



Join us for our next drop-in event:

Date: 14 June 23

Time: 10am – 3pm

Place: Ellesborough Parish Hall.

Please come along to discuss our works including...

- Closure of Ellesborough Road for utility diversion works
- Traffic management on Bacombe Lane for installation of a new plant crossing

What's happening in your area?

Update of continuing works from April – June 2023

Over the next few months you can expect:

- Utility diversions on A413 London Road, Small Dean
- Wendover Dean Viaduct piling works
- Wendover Green Tunnel earthworks
- Rocky Lane utility connection works
- Small Dean Viaduct piling
- The Nash Lee Road and Nash Lee Lane diversions opening
- The Ellesborough Road diversion opening
- The temporary diversion of Bacombe Lane opening
- The installation of a new plant crossing at Bacombe Lane



Traffic management requirements

Throughout May, June and July we will need to implement some temporary traffic management to ensure we can complete all necessary construction activities safely for both road users and our workforce.

Below you can see a summary of what to expect in the next couple of months in your area, further information will be communicated via email and the [HS2 website](#) and you can also come and see us at our events.

Location	Works	Traffic Management
Ellesborough Road, Wendover	Utility diversion works	Road closure
Nash Lee Road, Wendover	Diversion tie in works	Road closure
Nash Lee Lane, Wendover	Diversion tie in works	Road closure
Bacombe Lane, Wendover	Installation of plant crossing	Temporary diversion and traffic management
Forest Close, Wendover	Utility works	Road closure
A413 London Road, Small Dean	Utility diversion works	Road closure
Rocky Lane, Great Missenden	Utility works	Lane closure

We will have a series of short duration lane and road closures over the next few months to allow us to cut the grass on our verges to ensure signage is kept visible and use of road sweepers to maintain the roads we are working on.



2023 key works updates

There has been a busy start to 2023 as we begin to ramp up our construction. Throughout January to April this year we began significant phases of construction for two of our key structures in the area.

Small Dean Viaduct piling and phase one of the A413 London Road diversion

We have now begun phase one of the A413 road realignment and piling for the Small Dean Viaduct.

Our piling subcontractor, Bauer Keller JV, set up in March and are now well underway with the piling of the first abutment and pier one of the Small Dean Viaduct.

We are currently working on the A413 London Road realignment now the preparation for the utility works is complete. The next step will be to begin the diversion of existing utility mains to realign with the new A413. These works will require some road closures, details of which will be communicated in due course.



Wendover Green Tunnel earthworks

March saw the beginning of the construction for the Wendover Green Tunnel with our earthworks team starting to strip the topsoil in the area.

Topsoil stripping allows us to remove any vegetation and strip one metre into the ground where the structure will eventually be installed.

As we have entered longer daylight hours and milder weather, we will have also introduced extended working hours as set out below:

- Monday to Friday – 7am to 7pm
- Saturdays – 7am to 5pm

These works will have noise and vibration monitoring in place but are not expected to exceed any environmental allowances throughout the duration..



Did you know...

Piling is the process of driving foundations made of steel and concrete into the ground to provide a structurally stronger soil for the base of a structure.



Community projects

We have been busy working and volunteering for some fantastic local charities and projects in the North Chilterns Area. If you feel like we could help with a project you are working on, then please get in touch via the HS2 Helpdesk. Details of how to contact us can be found on the last page of this newsletter.

Great Missenden regeneration project grand opening

Members of the Great Missenden Parish Council, Great Missenden Village Association, Missendens Community Board and Great Missenden & Prestwood Revitalisation Group, along with EKFB and HS2 representatives gathered on Monday 24 April to officially open the regeneration works throughout the village of Great Missenden.

Open doors 2023

On Wednesday 15 March, John Colet School from Wendover joined our team of engineering experts on site to find out what goes on behind the hoarding.

The year 10 students enjoyed a presentation alongside a visit to the Wendover Dean site, learning how the viaduct will be built and also about future careers in construction.

Lindengate chalk delivery

We have provided 5 tonnes of chalk to the nature-based health and wellbeing charity, Lindengate located at Dobbies Garden Centre.

The chalk came from our recently excavated South Heath Cutting and will be used as a base for wildflower planting around their exciting new project the 'Giant's Armchair'.



Top to bottom; Cllrs Mike Johnstone and Peter Martin opening the regeneration project, Open Doors visitors and our latest chalk delivery to Lindengate.



Park Hill mitigation site in the North Chilterns Area

The HS2 Green Corridor

As part of the HS2 legacy, the Green Corridor will be a series of more than 33 square kilometres of habitats and green spaces that will run alongside the railway.

Over the next few years our ecologists will work to create and maintain these spaces and help in integrating HS2 into the existing landscapes.

Mitigation sites

Mitigation sites are where wildlife can be preserved, enhanced or introduced. The areas are landscaped with the intention of becoming habitats where local wildlife can thrive, away from the main construction of HS2.

Within the North Chilterns Area we have 5 mitigation sites in place to allow protected species, such as the great crested newt, to be relocated if required. Each site is equipped with between 2 – 4 ponds, bat boxes, hibernaculum (which is the scientific term for hibernation areas) and intermittent camera traps for monitoring of wildlife.

To find out more about HS2's Green Corridor initiative please scan or click on the QR to see the Green Corridor prospectus!



Tree replacement planting

During the start of April, the EKFB ecology team and planting subcontractors, Five Rivers, oversaw the planting of over 5,000 new trees along with replacement trees in the Jones Hill Wood area.

This is all part of the HS2 Green Corridor scheme, with a variety of tree species being planted including oak, willow, holly and rowan.

The trees will now be closely monitored with auditing to gauge the success of the planting. Any trees found to fail will be replanted.

Did you know...

33 square metres of habitats and green spaces is the equivalent of 23 new Hyde Parks lining the countryside!



What's coming up

Nash Lee Road and Nash Lee Lane, Wendover, diversions

We will be opening the temporarily realigned Nash Lee Road and Nash Lee Lane at the end of May to allow us to begin construction of the permanent diversions there, more on this can be found in the 'Spotlight: Nash Lee Road and Nash Lee Lane diversions' page.

Installation of temporary bridge on Risborough Road, Wendover

Later this year we will be installing a bridge that will cross over the top of Risborough Road.

The bridge will be a prefabricated structure that will be lifted into place over a series of overnight road closures.

Risborough Road will eventually be closed permanently and traffic will be diverted onto the newly constructed Stoke Mandeville relief road.

Bacombe Lane, Wendover, temporary diversion and plant crossing

Along with the diversion of Ellesborough Road, we will also be diverting Bacombe Lane this year.

The Bacombe Lane access will be temporarily diverted to start from the new Ellesborough Road near the footpaths to Coombe Hill and Bacombe Hill. The current access from London Road will be closed until the end of the project when both roads will be reinstated, with the diversions removed.

Before this we need to construct a plant crossing across Bacombe Lane that will ensure site traffic passes safely across the existing lane. We will temporarily divert Bacombe Lane with two-way traffic lights for

The Bacombe Lane bridleway and footpath will also be rediverted back to the original alignment whilst we work to complete our plant crossing.

Ellesborough Road, Wendover, temporary diversion preparation works

This re-alignment is due to be completed in September 2023. The newly diverted road will go around the back of the existing houses on Ellesborough Road and will include a bridge to allow our site traffic to pass underneath without impacting the public road.

As we will need to divert existing utilities along with the road, we will need to close the road several times throughout June – July. When the road is closed, we will excavate and realign the water main pipes and high voltage cables where necessary.

Water utility works in Wendover

We completed some utility works in Wendover town centre back in March to aid in establishing a water connection to our Wendover batching plant.

There will be a continuation of these works in May and June with traffic lights being in use on Forest Close and Dobbins Lane. This is to ensure the water supply to Wendover will not be affected by our works.

Rocky Lane, The Lee, fuel station

We will be completing our fuel station in July. This will allow us to fuel our vehicles on site, reducing traffic on public roads and local fuel stations.



EKFB aerial footage

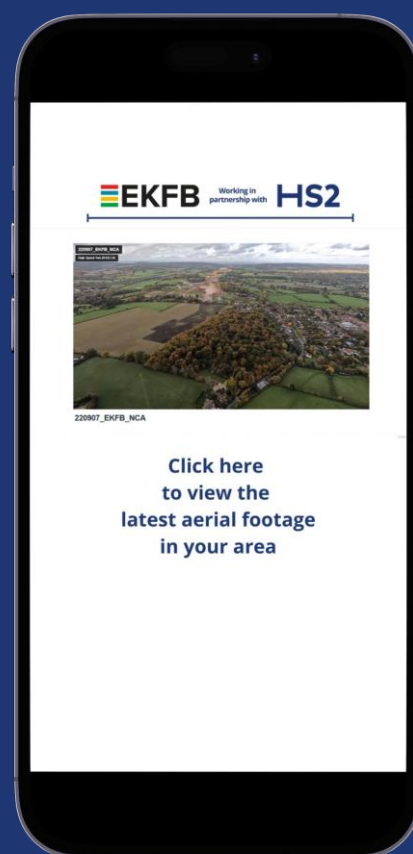
One of the best ways to see the progress we are making on site is from our aerial footage. If you scan the QR code on your phone below, it will allow you to view the latest f HS2 works in your area.

The footage gives an annotated overview of where different structures will be found once HS2 is complete along with an update of how the landscaping is currently looking.



**Click here, scan me
or follow the link below!**

www.bit.ly/NCADroneFootage



Meet the Team events 2023

We held our first 'Meet the Team' event at St Anne's Hall in Wendover on the 28 March. The event was attended by our community engagement and construction team for the area and sparked some constructive conversation. The event was very well attended by local people, and the overall feedback from attendees was positive; we intend to roll the event out to other communities in the area throughout the year.

Our next Meet the Team event will be:

Thursday 15 June

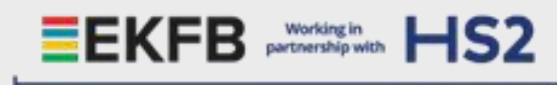
15:00 – 19:00

**Jeffcoate Meeting Room on the Lindengate
charity site, HP22 6BD**

Meet the team



Drop in session



Spotlight: Nash Lee Road and Nash Lee Lane temporary diversions

In May 2023 we will be tying in the temporary diversion of Nash Lee Road and Nash Lee Lane to allow us to continue construction in the area in preparation for the permanent realignment of these roads, the diverted roads will be open in early June.

Why do we need these diversions?

The purpose of these temporary diversions is to allow us to begin work on the permanent Nash Lee Road and Nash Lee Lane alignments.

The temporary diversion of Nash Lee Road will include a 55m span bridge to take road traffic over our construction site. This enables us to complete the HS2 works without impacting road users.

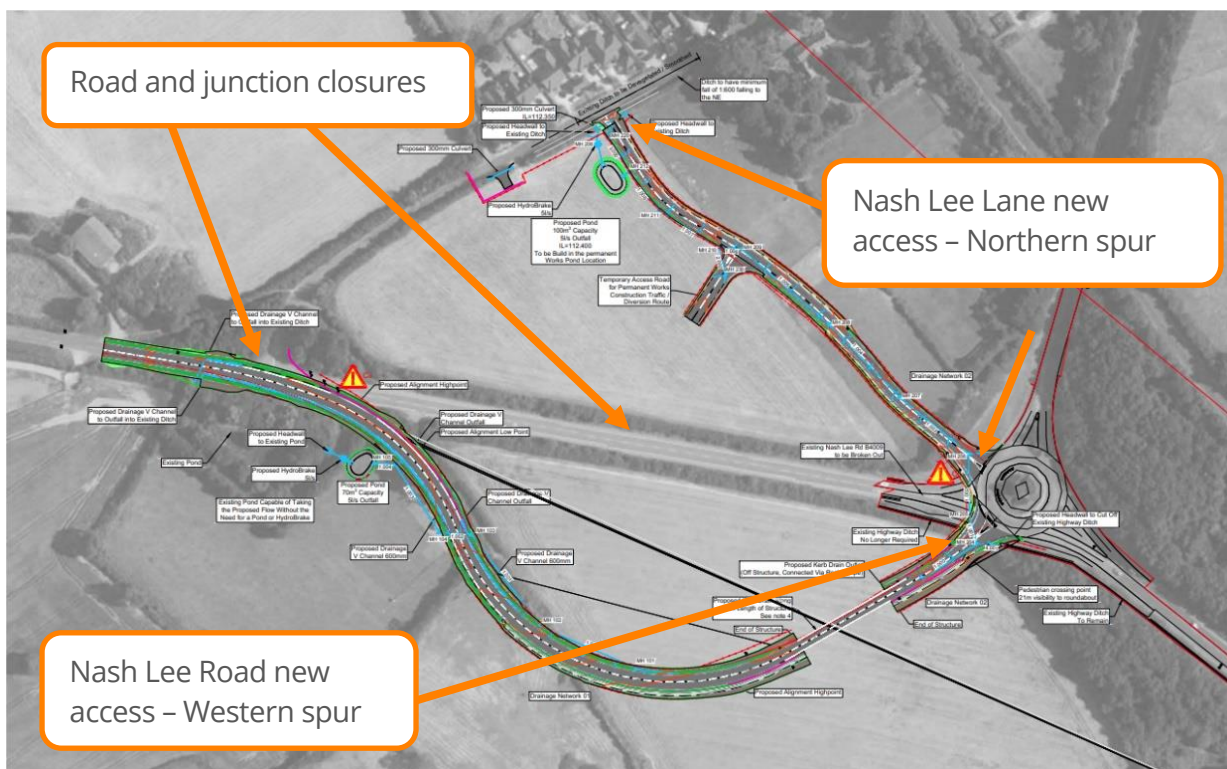
The new alignments of the roads will eventually include a permanent 150m bridge on Nash Lee Road that will carry traffic over the HS2 railway line.

What can we expect to see in 2023?

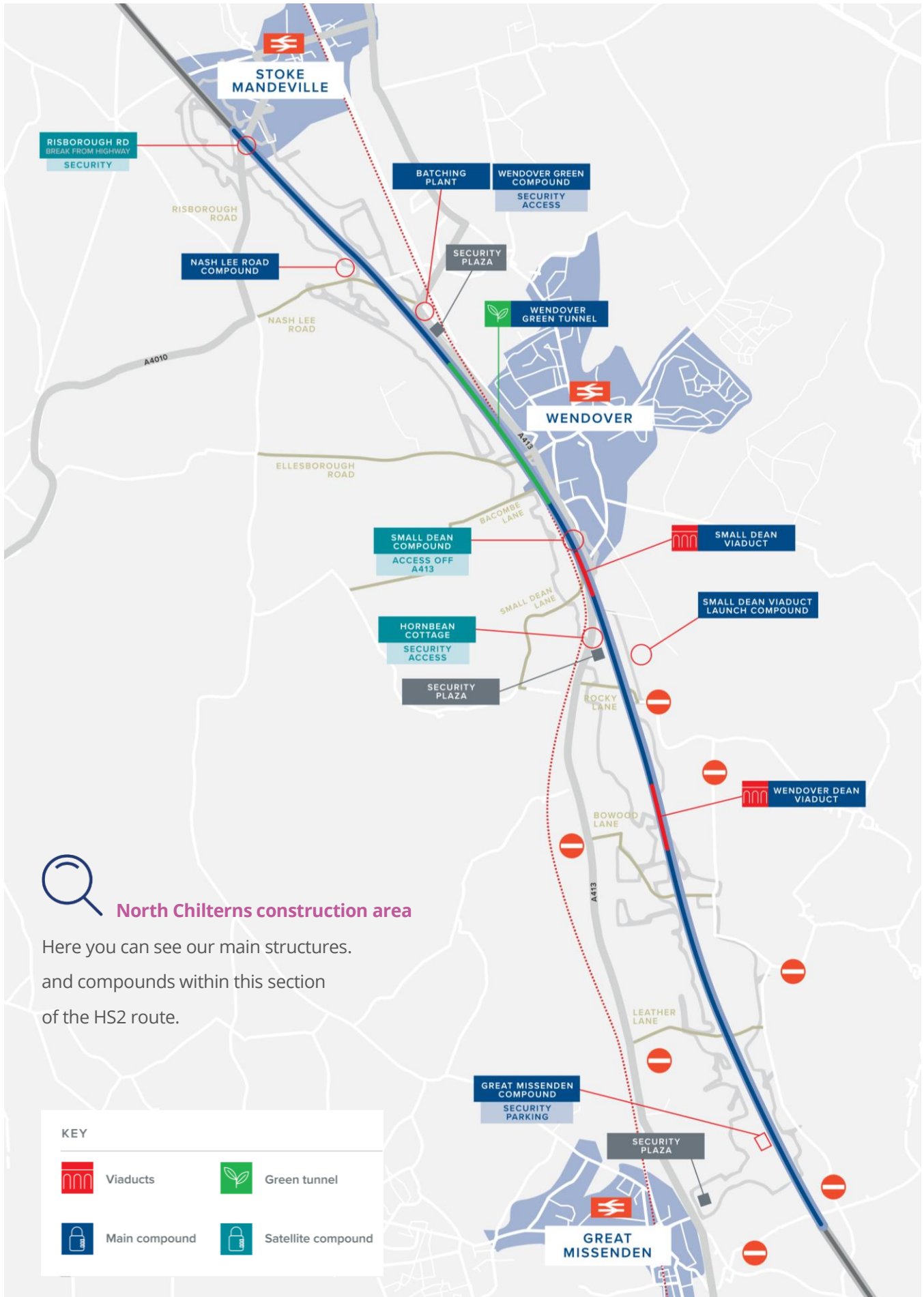
Once we have completed the temporary diversion of Nash Lee Road and Nash Lee Lane we will be starting works on the permanent diversions. This will include the cutting that will run underneath the temporary bridge to allow our site traffic to travel around the site without impacting the public road.

We will also begin test piling later in the year in preparation for the construction of the permanent Nash Lee bridge that will eventually run over the HS2 railway line.

Nash Lee Road and Nash Lee Lane temporary diversions map:



North Chilterns Area map



Keeping you informed

We are committed to keeping you informed about work on HS2. This includes ensuring you know what to expect and when to expect it, as well as how we can help you.

The Residents' Commissioner

The independent Residents' Commissioner oversees and monitors our commitments to you.

The commissioner's reports and our responses can be found at www.gov.uk/government/collections/hs2-ltd-residents-commissioner

The Residents' Commissioner makes sure we fulfil the commitments in the HS2 Community Engagement Strategy (<https://bit.ly/3oOA25j>).

The Residents' Commissioner can be contacted on: residentscommissioner@hs2.org.uk

Construction Commissioner

The independent Construction Commissioner regularly meets our Chief Executive Officer to raise any concerns or emerging trends across HS2.

The Construction Commissioner's role has been developed to monitor the way we manage and respond to construction complaints.

The commissioner mediates on disputes about construction, involving individuals and organisations, that we can't resolve. The commissioner advises members of the public about how to make a complaint about construction.

The Construction Commissioner can be contacted on: complaints@hs2-cc.org.uk

Property and compensation

You can find out about HS2 and properties along the route by visiting:

www.gov.uk/government/collections/hs2-property

Find out if you can claim compensation at:

www.gov.uk/claim-compensation-if-affected-by-hs2

Holding us to account

If you are unhappy for any reason you can make a complaint by contacting the HS2 Helpdesk. For more details on our complaints process, please visit:

www.hs2.org.uk/in-your-area/contact-us/how-to-complain/

Reference number: HS2-MW-EK-Ph1-Ar-Ce-C2-CR-13-24/04/2023 1MC12-EKF-IN-NTE-CS03-000074

High Speed Two (HS2) Limited, registered in England and Wales.


Registered office: Two Snowhill, Snow Hill Queensway, Birmingham B4 6GA.

Company registration number: 06791686. VAT registration number: 888 8512 56

Contact us

Contact our HS2 Helpdesk team all day, every day of the year on:

 Freephone **08081 434 434**

 Minicom **08081 456 472**

 Email **HS2enquiries@hs2.org.uk**

Write to:

FREEPOST

HS2 Community Engagement

Website **www.hs2.org.uk**

To keep up to date with what is happening in your local area, visit: **www.HS2inyourarea.co.uk**

Please contact us if you'd like a free copy of this document in large print, Braille, audio or 'easy read' format. You can also contact us for help and information in a different language.

HS2 Ltd is committed to protecting personal information. If you wish to know more about how we use your personal information please see our Privacy Notice: <https://www.gov.uk/government/publications/high-speed-two-ltd-privacy-notice>