

Contact our HS2 Helpdesk team on **08081 434 434**

# HS2 Update

North Chilterns Area | January 2023

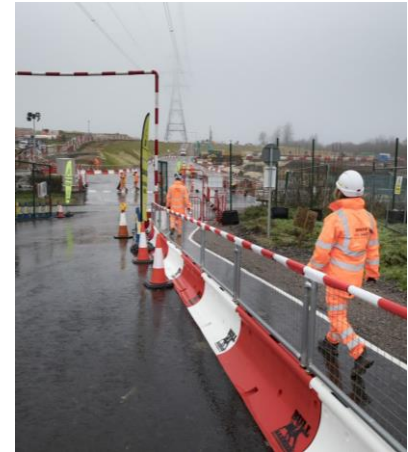


High Speed Two (HS2) is the new high speed railway for Britain. Should you have any questions or enquiries regarding our works, please contact the Helpdesk details of which can be found in this newsletter. We will be keeping our local website [www.hs2inbucksandbox.co.uk](http://www.hs2inbucksandbox.co.uk) up to date with information on our works in the local area.

## What's inside this newsletter...

In this edition of the newsletter, we are taking a look back at the works which we completed in 2022 and we look at what's to come for 2023.

- Updates on the Ellesborough Road temporary diversions
- The start of the Wendover Green Tunnel
- Progress on the Wendover Dean Viaduct
- What roadworks and closures are upcoming
- Spotlight on the A413
- New aerial drone footage from Great Missenden to Stoke Mandeville
- Upcoming piling works in the area
- The opening of the Great Missenden Village Improvement Project
- Stoke Mandeville Children's Ward Toy drive



**Join us for our next drop-in event.**

**Date: 15 February 23**

Time: 10am – 3pm

Place: Wendover Town Centre.

Please come along to discuss our works including...

- Water works on Chiltern Rd and Dobbins Lane
- Utility works on Rocky Lane
- Utility diversion on A413 London Road

# What's happening in your area?

## Update of continuing works from January – March 2023

Over the next few months you can expect to

- Utility diversions on A413 London Road
- Rocky Lane sheet piling
- Wendover Dean Viaduct bored and sheet piling
- A413 Conveyor commissioning and operation
- Wendover Green Tunnel earthworks
- Rocky Lane utility work
- Small Dean Viaduct piling
- Nash Lee Road and Lane diversion
- Ellesborough Road diversion
- Vegetation clearance
- Topography survey works
- Piling for overbridges



## Traffic Management requirements

Throughout February and March, we will need to implement some temporary traffic management to ensure we can complete all necessary construction activities safely for both road users and our workforce.

Below you can see a summary of what to expect in the next couple of months in your area, further information will be communicated via email and the [HS2 website](#) where appropriate.

Location	Works	Traffic Management
Dobbins Lane	Utility work	Road closure
Chiltern Road	Utility work	Road closure
A413 London Road	Utility diversion	Road closure
Ellesborough Road	Survey work and trial holes	Road closure
Rocky Lane	Utility work	Road closure
London Road to South St.	Topographical surveys	Overnight road closure
A413 leading to World's End	Topographical surveys	Lane closure
Wendover Bypass	Power connection works	Lane closure
Nash Lee Road	Utility work	Lane closure

## 2022 Works roundup

We saw a number of key milestones reached during our works in 2022. We moved massive amounts of earthworks and completed preliminary works for our major structures and roads within the area.

### Completion of our Wendover Batching Plant

In March we completed the construction of our Wendover batching plant, which went on to produce over 12,000m<sup>3</sup> of concrete in 2022.

This concrete is then used for various HS2 works in the area, significantly reducing the number of deliveries received by our sites.



### Start of Wendover Dean Viaduct Piling

We began piling for the Wendover Dean Viaduct, as of December 22 we had piled five piers. Piling will continue into 2023, along with other significant works in the area.

### Completion of Tunnel Boring Machine Journey

In March last year, 'Lizzie' the tunnel boring machine began her journey to complete the South Heath Culvert. The culvert will provide an essential drainage tunnel for the South Heath Cutting.

The machine was named 'Lizzie' by pupils at The Misbourne School in Great Missenden who ran a competition in early 2022 that gave students the opportunity to submit their name ideas.



### 1.8m m<sup>3</sup> earthworks moved in the year

Over the course of 2022 we made significant progress in our earthworks programme. We moved over 1 million m<sup>3</sup> of earth over 1,600 linear metres.

The bulk of our earthworks season focused on the South Heath Cutting, this is where EKFB and ALIGN will interface at the South Heath Portal to receive the tunnel boring machine that was launched by ALIGN in summer 2021





## Community projects

We have been busy working and volunteering for some fantastic local charities and projects in the North Chilterns area. If you feel like we could help with a project you are working on, then please get in touch via the HS2 Helpdesk

### Great Missenden

#### Regeneration Project

Working with Great Missenden Parish Council, Great Missenden Village Association, Missendens Community Board and Great Missenden & Prestwood Revitalisation Group, we have carried out a series of regeneration works throughout the village of Great Missenden.

The works included installing new benches, bike racks and bins across the centre of Great Missenden.



### Stoke Mandeville Children's Ward and Aylesbury Women's Aid Toy Collection

Throughout December our team donated new toys for a collection we organised for Stoke Mandeville Children's Ward and Aylesbury Women's Aid.

The collection consisted of approximately 300 toys for all age groups. Our headed over to the hospital and refuge to drop the presents off on Wednesday 21 December, they were delighted with the donations which were valued at around £1,500!

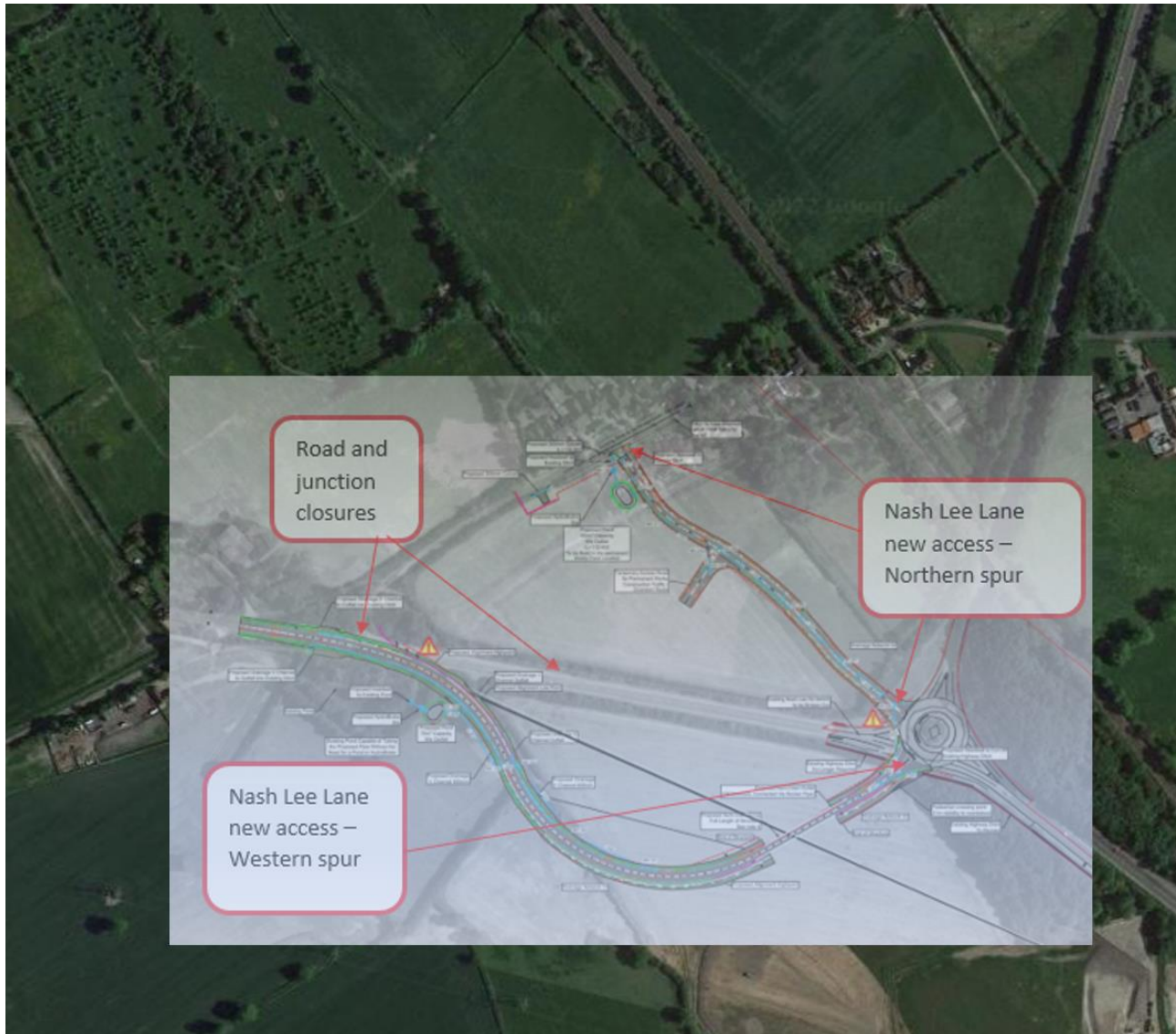


#### Did you know...

Over **2100+ volunteering** hours have been delivered in the past **12 months** on **42 community investment projects!**

## What's coming up in 2023

We are set for another busy year with several of our temporary road diversions due to be open for road users and the start of some more key milestones for the projects.



### Nash Lee Road and Lane diversions

The Nash Lee Road and Nash Lee Lane temporary diversions are progressing well and are due to be operational in April of this year. We undertook a lot of preparation for this at the end of 2022 and will continue with those works until the diversion is open.

#### Did you know...

The temporary Nash Lee Road diversion will include a 55m bridge to take traffic over our construction site.



The purpose of these diversions is to allow us to begin work on the permanent Nash Lee Road and Lane realignments.

There will be more information on these diversions in our next newsletter.



## What's coming up in 2023

### Rocky Lane piling

We have been sheet piling for the Rocky Lane Underbridge throughout January, these works will enable us to begin the earthworks phase of the bridge construction. The sheet piling put in place will retain the earth and protect the existing road while the bridge is constructed.

### A413 Diversion and Small Dean Viaduct

There will be a lot of preparation work ahead of the A413 temporary diversion and ramping up of the viaduct construction works, more on this can be found in the ['Spotlight: A413 diversion and Small Dean Viaduct'](#) page.

### A413 Conveyor

The conveyor over the A413 London Road will be operational throughout 2023, the conveyor was approved in 2021 to reduce HGV traffic on the local road network. In Easter 2022 we launched temporary bridges over the road and rail line for the conveyor to sit on, we have since worked to assemble and connect the conveyor up to transfer excavated material to our Small Dean Lane site to be stockpiled and used in other locations.

Throughout Dec 22 and early 2023 the conveyor is going through a series of 'dry' and 'wet' commissioning runs to ensure it is in full working order.

The conveyor will then be brought up to speed over the following weeks before running at full capacity in time for the earthworks season.

### Ellesborough Road Temporary Diversion

The Ellesborough Road re-alignment is due to be completed in June 2023. The newly diverted road will go around the back of the existing houses on Ellesborough Road and will include a bridge to allow our site traffic to pass underneath without impacting traffic.

The Bacombe Lane access will be temporarily diverted to start from the new Ellesborough Road near the footpaths to Coombe Hill and Bacombe Hill. The current access from London Road will be closed until the end of the project when both roads will be reinstated, with the diversions removed.

### Topographical surveying works

To help us finalise the detailed designs of the new railway and ensure we can reinstate features after construction has been completed, we are required to survey the area regularly.

We will be undertaking maintenance checks on our surveying stations between Wednesday 1 – Friday 3 February, this will require lane closures on the A413 toward World's End, with traffic lights on World's End roundabout and Chesham Road/Frith Hill/Kings Lane.

We will also be carrying out a topographical survey between Monday 27 February – Saturday 1 March on London Road towards South Street in Wendover. As the team will need to access and survey the entire carriageway, we will need to close the road overnight from 8pm – 6am on the dates above. Access will be maintained for local

## Wendover Dean Viaduct Piling and Concrete Pour

We will be continuing piling works for Wendover Dean Viaduct through the early part of 2023. Piling is the act of installing long, heavy steel and concrete posts into the ground in order to create a supported foundation for a structure. Many of the structures in your area will require piling to ensure they are reinforced at the base.

We will also commence pouring of the viaduct abutments throughout 2023, these pours will take place over extended periods of time as once a concrete pour is started it cannot be stopped until it is finished to ensure the stability is not compromised. The concrete for these pours is generated at our Wendover batching plant adjacent to the bypass.



*Image above shows an artist impression of Wendover Dean Viaduct when operational.*

## Wendover Green Tunnel Earthworks begin

As we enter the 2023 earthworks season, one of the biggest focuses will be on the Wendover Green Tunnel. The 1185 metres long 'cut and cover' tunnel will require a significant amount of earthworks preparation work throughout the year. The works will begin with the bulk excavation of the Northern half of the tunnel. All the excavated material will be staying within the project and transported on our internal access roads for use in other locations.



*Image above shows an artist impression of the Small Dean area leading to the Wendover Green Tunnel.*



### Did you know...

The longest piles that form the foundation of Wendover Dean Viaduct are 45 metres deep.

## EKFB Drone footage

One of the best ways to see the progress we are making on site is from our drone footage. If you scan the QR code on your phone below, it will allow you to view our latest drone footage of HS2 works in your area.

The footage gives an annotated overview of where different structures will be found once HS2 is complete along with an update of how the landscaping is currently looking.



**Click here, scan me  
or follow the link below!**

**[www.bit.ly/NCADroneFootage](http://www.bit.ly/NCADroneFootage)**



## Open Doors 2023

HS2 has partnered with Build UK, to support the 'Open Doors 2023' programme which runs from Monday 13 - Saturday 18 March 2023.

Across the EKFB 80km stretch, we are offering a range of activities to give young people and career changers an opportunity to see behind the hoardings and consider a career in construction.

Activities will include:

- Site visits to the Wendover Dean Viaduct launch compound;
- Experience the immersive ELITE training programme;
- A visit an ecology mitigation site in Aylesbury; and
- A 'Site safari' bus tour of the internal access road in Calvert

### **Sounds interesting?**

If you would like to register to be a part of Open Doors 2023, sign up today at [www.opendoors.construction/site/631](http://www.opendoors.construction/site/631)

Rebecca Young, HS2's Skills and Employment Supply Chain Manager said "For those interested in a career in construction, this is a great opportunity to meet the people building our new stations, viaducts and tunnels. With over 900 apprentices already on board and plans to recruit hundreds more in the months and years ahead, we hope to inspire the next generation to play a part in future phases of HS2."



## Spotlight: A413 diversion and Small Dean Viaduct

As we enter 2023 you will notice a ramp up in works around the A413 and Small Dean Viaduct site. This article will explain some of the works you can expect to see this year in the area.

### What is the Small Dean Viaduct?

Small Dean Viaduct will be around 350 metres long with seven spans crossing Small Dean Lane, a section of the existing Chilterns railway and a section of the A413 London Road.

The current alignment of the road creates unavoidable constraints for the design of the viaduct so we need to divert the existing road to accommodate the piers that will span this section of the A413 London Road at Small Dean. We will be around the Wendover area with our Mobile Visitors Centre in early 2023 to provide specific drop-in sessions for those who want to find out more about the works.

### Dec 22/Jan 23: Christmas works

Between 23 December and 3 January, we completed an excavation between the A413

London Road and the Chiltern railway. Over 4,000 man-hours were worked to complete the excavation, transporting over 11,000t of material over the A413 London Road. This will allow us to pile for two piers of the viaduct in this location later in the year.

### February - May 23: Diversion preparation

Works for the A413 London Road temporary realignment will be ongoing throughout the first half of 2023. The utility diversion work will be the focus in the first part of 2023, this is so we can make sure all the appropriate utility surveys and redirections have taken place before we begin the next phase of the realignment. The next phase will include the kerbs being laid next to road, new gullies and drainage runs, the grading of verges and new signs being erected.

### Summer 2023: A413 diversion open

The A413 London Road diversion is due to be operational in summer 2023. The road will be moved one width to the east to make the area between the A413 and the railway wider for our construction works.



# Keeping you informed

We are committed to keeping you informed about work on HS2. This includes ensuring you know what to expect and when to expect it, as well as how we can help you.

## The Residents' Commissioner

The independent Residents' Commissioner oversees and monitors our commitments to you.

The commissioner's reports and our responses can be found at [www.gov.uk/government/collections/hs2-ltd-residents-commissioner](http://www.gov.uk/government/collections/hs2-ltd-residents-commissioner)

The Residents' Commissioner makes sure we fulfil the commitments in the HS2 Community Engagement Strategy (<https://bit.ly/3oOA25j>).

The Residents' Commissioner can be contacted on: [residentscommissioner@hs2.org.uk](mailto:residentscommissioner@hs2.org.uk)

## Construction Commissioner

The independent Construction Commissioner regularly meets our Chief Executive Officer to raise any concerns or emerging trends across HS2.

The Construction Commissioner's role has been developed to monitor the way we manage and respond to construction complaints.

The commissioner mediates on disputes about construction, involving individuals and organisations, that we can't resolve. The commissioner advises members of the public about how to make a complaint about construction.

The Construction Commissioner can be contacted on: [complaints@hs2-cc.org.uk](mailto:complaints@hs2-cc.org.uk)

## Property and compensation

You can find out about HS2 and properties along the route by visiting:

[www.gov.uk/government/collections/hs2-property](http://www.gov.uk/government/collections/hs2-property)

Find out if you can claim compensation at:

[www.gov.uk/claim-compensation-if-affected-by-hs2](http://www.gov.uk/claim-compensation-if-affected-by-hs2)

## Holding us to account

If you are unhappy for any reason you can make a complaint by contacting the HS2 Helpdesk. For more details on our complaints process, please visit:

[www.hs2.org.uk/in-your-area/contact-us/how-to-complain/](http://www.hs2.org.uk/in-your-area/contact-us/how-to-complain/)

**Reference number: HS2-MW-EK-Ph1-Ar-Ce-C2-Prog-works-7-01/09/2023 1MC12-EKF-IN-NTE-CS03-000057**

High Speed Two (HS2) Limited, registered in England and Wales.


Registered office: Two Snowhill, Snow Hill Queensway, Birmingham B4 6GA.

Company registration number: 06791686. VAT registration number: 888 8512 56

## Contact us

Contact our HS2 Helpdesk team all day, every day of the year on:

 Freephone **08081 434 434**

 Minicom **08081 456 472**

 Email **HS2enquiries@hs2.org.uk**

Write to:

**FREEPOST**

**HS2 Community Engagement**

Website **[www.hs2.org.uk](http://www.hs2.org.uk)**

To keep up to date with what is happening in your local area, visit:  
**[www.HS2inyourarea.co.uk](http://www.HS2inyourarea.co.uk)**

**Please contact us if you'd like a free copy of this document in large print, Braille, audio or 'easy read' format. You can also contact us for help and information in a different language.**

HS2 Ltd is committed to protecting personal information. If you wish to know more about how we use your personal information please see our Privacy Notice:  
<https://www.gov.uk/government/publications/high-speed-two-ltd-privacy-notice>