

Contact our HS2 Helpdesk team on **08081 434 434**

HS2 Update

North Chilterns Area | June 2022

High Speed Two (HS2) is the new high speed railway for Britain. As we reintroduce face to face engagement, which is in addition to the ongoing virtual engagement, we will continue to follow government guidance on reducing the spread of Covid-19. The health and safety of our workforce and the communities we work within is our priority. Please contact the Helpdesk if you have any further questions relating to our response to the Covid-19 pandemic. We will be keeping our local website

www.hs2inbucksandox.co.uk up to date with information on our works in the local area.

Update on our continuing works

Over the next few months, you can expect to see the following works in your local area:

- Temporary road closures of Rocky Lane and A413 London Road for utility diversion works;
- Demolition of properties on Ellesborough Road;
- Removal of the central reservation on the A413 at Great Missenden for abnormal load deliveries;
- Launch of our tunnel boring machines for the drainage microbore tunnel;
- Construction of temporary diversions Nash Lee Road, Nash Lee Lane, Ellesborough Road and Bacombe Lane;
- Public Rights of Way improvement/extension and realignment works;
- Preparatory works for the A413 London Road temporary diversion beginning in Autumn 2022;
- Drainage surveys as well as topographical surveys involving lane and road closures;
- Ground Investigations, survey and utility trial hole works;
- Piling works for the Wendover Dean Viaduct and Rocky Lane bridge;
- Ecology investigations and vegetation clearance works;
- Completion of our internal site access roads;
- Completion and operation of our conveyor; and
- Excavation, movement, and storage of earthworks including temporary stockpiles.



Join us ...

You can expect to see our new mobile visitor centre visiting a town near you! This specialised vehicle will enable us to increase the reach and visibility of our local engagement team, while giving communities a safe, comfortable space where they can find out more about the HS2 project and the work EKFB do.

Please contact the HS2 Helpdesk or visit hs2.org.uk/events for more information on events in your area.

www.hs2.org.uk/events

Update on works

Temporary Diversions

Throughout 2022 you will continue to see our teams carrying out works for the following temporary diversions:

- Bacombe Lane;
- Ellesborough Road;
- Nash Lee Lane; and
- Nash Lee Road

We are currently constructing these diversions within HS2 limits meaning our impact on the local road network will remain low while they are being built. Once completed, we will then require overnight road closures to tie in the new diversions to the existing roads.

The diversions of Ellesborough Road and Bacombe Lane are to enable the construction of the Wendover Green Tunnel. A green tunnel, or cut-and-cover tunnel, is where a trench is excavated, tunnel structure built, then the land on top of the tunnel is restored so it blends into the landscape. Once the green tunnel is built, the permanent realignments of Bacombe Lane and Ellesborough road will travel over the tunnel.

The Ellesborough Road diversion will include a bridge, enabling traffic to pass over our site access and haul road, further reducing our impact on the local road network while we build the Wendover Green Tunnel.

Prior to constructing the Ellesborough Road diversion, archaeologists are undertaking surveys and excavations. This work is carried out to ensure the safe preservation of any finds that may be of historical significance to the local area.

The current location of Nash Lee Road crosses the path of HS2. The diversions of Nash Lee Road and Nash Lee Lane are to enable the construction of the new Nash Lee Road realignment and bridge.



Figure 1: The image above shows an archaeological excavation taking place in Wendover, 2020.



Figure 2: In 2020, during an excavation at Wellwick Farm near Wendover, a circular monument of wooden posts 65 metres in diameter, similar to Stonehenge, was uncovered. Suggesting the land was used for ceremonial activity. A group of archaeologists can be seen within the centre of the circle to show just how large this monument would have been.

Once completed, the new permanent realignment and bridge will allow traffic to travel over the HS2 railway line.

We expect these diversions to be fully operational by the end of 2022. Once the HS2 line in the area is nearing completion the temporary diversions of the above roads and lanes will be removed and their permanent realignments constructed.

Students from the Misbourne School in Great Missenden name HS2 Microbore Tunnel 'Lizzy'



Figure 1: Children from the Misbourne School in Great Missenden posing with the HS2 Microbore Tunnel, April 2022.



At our Great Missenden site, the 12-month construction of the micro-bored tunnel started in March 2022 with the construction of two shafts of 30m in depth. April saw the delivery of the tunnel boring machines (TBM) to site with the launch in May 2022.

Prior to the launch, students of The Misbourne School in Great Missenden named our first TBM 'Lizzy' to mark the Queen's platinum jubilee. Our second TBM is to be named 'Marsha' after African-American gay and transgender rights activist Marsha P. Johnson.

The scale of the tunnel is much smaller than what is being used for the Chiltern tunnel and will be approximately 750m in length and 1.8m in diameter.

The tunnel is an integral part of the drainage system for the HS2 line and will take surface water from the rail line at South Heath, to a pond located adjacent to the A413. This clever piece of engineering will allow the water that runs off the rail line to be stored and released at a flow that will discharge into the pond at a manageable rate to mitigate any potential flood risk.

Update on the conveyor system, Wendover



We are now approaching the halfway point for the installation of the conveyor system.

In April, during a 52-hour Network Rail possession over the Easter weekend, the earthworks conveyor team successfully launched the 'Mabey Bridge' across the railway cutting at Small Dean.

Its purpose will be to shift construction material – such as earth and crushed rock - from one side to the other. Powered by electricity, the fully-enclosed 600m long conveyor will avoid the need to load material into HGVs for the short journey up the A413 to the next construction site – and is expected to shift the equivalent of up to 78,000 lorry loads of material over the next two years.

Further overnight works will be required to complete the conveyors installation over the Chiltern Rail line. To avoid any inconvenience to rail users, this work is being carried out overnight once the last service has passed through and before the first service the next morning.

From May we will begin construction on the piers and the bridge that will cross over the A413 London Road. For reasons of safety, while we lift the bridge and conveyor into place, we will require full road closures. To reduce the impact on road users, these works will also be undertaken overnight with a signed diversion in place.

In order to connect power to the conveyor, we need to install a cable from the area adjacent to the Jet Petrol Station along the A413 London Road, up Rocky Lane and into our compound. To complete these works, we will need a lane closure between the petrol station and Rocky Lane and introduce a full closure of Rocky Lane, with local diversion in place.



Figure 2: The image above shows the 'Mabey Bridge' at our site in Small Dean Wendover, April 2022.



Figure 3: In the image above, you can see our teams working to install the 'Mabey Bridge' in April 2022.

Once the installation of the conveyor over the A413 and Chiltern Rail Line is completed, we will begin construction of the material processing units.

The conveyor is expected to be completed and fully operational in July 2022 and remain in service for two years.



Figure 4: The image above shows machinery carrying out excavations for the South Heath Cutting in the North Chilterns Area, 2022.

Earthworks and stockpiles update



Throughout the warmer months you will begin to see progress across the area from Great Missenden to Stoke Mandeville. Our earthworks activities consist of deep excavation, removal and movement of large quantities of materials such as topsoil and chalk.

In order to make the best use of the long days and dry weather conditions, you may see some of these activities taking place outside our core working hours of 7am to 7pm. With our internal haul road in operation, attention has moved to the main works for the train line itself. The removal and storage of topsoil and subsoil from the Chiltern Tunnel north portal, the cuttings and other project structures are well underway. Many of these stockpiles, particularly in the locations close to Potter Row and Kings Lane, are temporary until the conveyor is in service and we can start to move materials north.

To suppress dust generation from our articulated dump trucks, we are deploying tractors and bowlers to keep the area damp throughout the project. All stockpiles will also be sprayed and compacted to avoid any material becoming loose. Once completed, the longer-term stockpiles will be seeded, irrigated, and maintained to form a vegetation layer that helps to mitigate noise.

Environmental advisors, construction supervisors and managers will undertake regular inspections to ensure that these measures are consistently in place.

Your feedback matters to us...



HS2 Helpdesk is an email and freephone service available for all queries.



In your area, we are responding to most queries in under 4 days.

You said, we did...



"The roads near your site are muddy"

This is a key improvement area for us - we recently briefed staff route-wide on reducing mud on road and this year we have installed 5 new wheel washer facilities across our sites.



"Can you help us with a local allotment project?"

EKFB and H W Martin recently helped rejuvenate a local Parish allotment, clearing over 2000m² of space and creating 11 new half plots. Let us know if you would like our help in your community.

In the last 6 months, we received 159 complaints across our 80km section:



53%
Traffic & transport

34% - Road works
25% - HS2 vehicles



30%
Construction and site impacts

We also received 78 compliments from our local communities:



32%
Community meetings & engagement

37%
Community investment & volunteering

Frequently Asked Questions

Some of our most commonly asked questions in your area...

Q: Are the diversions of Ellesborough Road, Bacombe Lane, Nash Lee Lane and Nash Lee Road permanent or temporary?

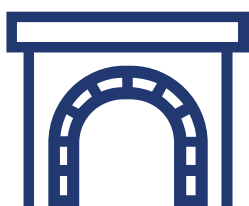
A: These new diversions will all be temporary while we build HS2. Towards the end of the project, once the HS2 rail line is near completion, we will construct new permanent realignments of these roads.

Q: Where can I find out more about job opportunities with EKFB while they construct HS2?

A: With a wide range of careers available stretching from Logistics to Health & Safety, from Construction Management to PR, from Finance to Office Support, there's a job for everyone. We're looking for the best and the brightest people from a wide range of backgrounds and industries to bring fresh thinking to our expert team. Please visit [Careers | EKFB](#) for more information.

Q: How can I get a quick response to a construction related query?

A: The HS2 Helpdesk is open 24 hours a day (08081 434 434 / HS2enquiries@hs2.org.uk) and we thank you for raising your queries, comments and concerns with us – these allow us to improve how we work. In your area EKFB are now responding to your queries and complaints within 3.5 working days on average.



Logistics update

Throughout 2022, our teams will be moving on from preparatory works and into our main construction phases for the various

bridges and two viaducts that will be built in the areas of Great Missenden and Wendover, such as the Wendover Dean Viaduct.

In an effort to reduce our impact on the local area as well as the amount of work on site, many aspects of these bridges and viaducts are being created offsite. Throughout 2022 we will be receiving deliveries of these materials to our sites along the A413 and some will be classed as abnormal loads.

An abnormal load is a load which due to its weight or dimensions cannot be carried on a conventional goods vehicle and requires a special vehicle and arrangements for its transport. These deliveries often include very large construction machinery such as cranes as well as materials that are being built off-site.

The piers of the Wendover Dean Viaduct, some of which will be up to 14 metres high, are being cast as shells offsite before they are assembled like giant Lego blocks and filled with concrete.

The steel beams that will be used to construct the viaduct, some as long as 30m in length, are also being created off-site.

Specifically, the long steel beams for the Wendover Dean Viaduct will require the temporary removal of the central reservation between the two roundabouts at Link Road and Frith Hill.

The delivery of the beams is expected to begin in Autumn 2022. To safely delivery these, three lanes of the A413 London Road will be closed overnight with temporary traffic lights in place. During the day, this will revert to lane closures.

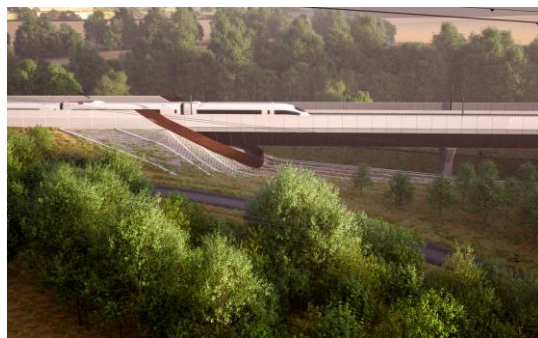


Figure 5: This Computer-Generated Image (CGI) is an artist's impression of what the Wendover Dean Viaduct will look like.



Figure 6: The above image is an example of an abnormal load of steel girders being delivered to an HS2 site.

For the safety of road users and our staff, these abnormal loads often require temporary traffic management to provide enough space for the vehicles to safely turn into our construction sites.

Abnormal load delivery routes are decided by hauliers and the police. However, they will not deviate from our current HGV (Heavy Goods Vehicles) routes from the M40 and along the A413.

We thank you for your co-operation and apologise in advance for any inconvenience these deliveries may cause.

Our Mobile Visitor Centre



In March 2022 we launched our Mobile Visitor Centre, allowing us to bring engagement to your area.

We will visit your local area every few months to enable you to drop-in and ask questions or find out more about the project. We will have a range of experts on hand, from engagement managers to engineers.

Coming to your area soon...

To find out our upcoming locations, please visit our dedicated events page:

hs2.org.uk/events/mobile-information-centre-dates-and-venues/

Or scan me!

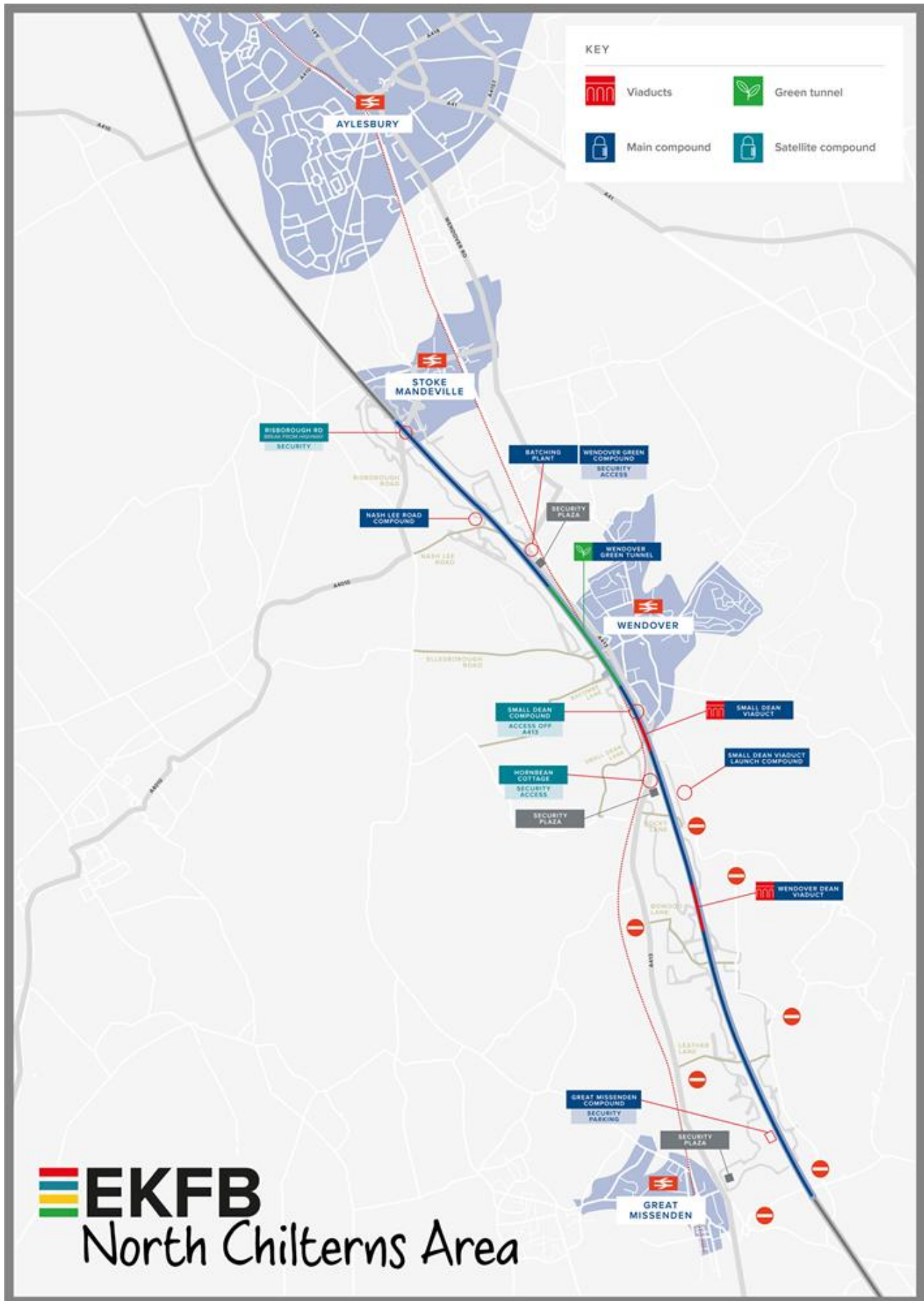


Race the Trace – fundraising for local charities

Throughout the month of June, we're challenging our five sections and our route wide support team to race the length of the trace for charity! In September 2021, the North Chilterns Area team raised over £1000 which was donated to The Buckinghamshire branch of Mind, with a total over £6000 raised for other Buckinghamshire charities.

This year the North Chilterns Area team will be raising funds for the charity Pace, located in the Aylesbury Area. Pace is a specialist charity that is committed to ensuring that children with neurodisabilities have the opportunity to reach their fullest potential in life and can take their place in the world.





Keeping you informed

We are committed to keeping you informed about work on HS2. This includes ensuring you know what to expect and when to expect it, as well as how we can help.

Residents' Charter and Commissioner

The Residents' Charter is our promise to communicate as clearly as we possibly can with people who live along or near the HS2 route.

www.gov.uk/government/publications/hs2-residents-charter

We also have an independent Residents' Commissioner whose job is to make sure we keep to the promises we make in the Charter and to keep it under constant review. Find reports at:

www.gov.uk/government/collections/hs2-ltd-residents-commissioner

You can contact the Commissioner at:
residentscommissioner@hs2.org.uk

Construction Commissioner

The Construction Commissioner's role is to mediate and monitor the way in which HS2 Ltd manages and responds to construction complaints. You can contact the Construction Commissioner by emailing:
complaints@hs2-cc.org.uk

Property and compensation

You can find out all about HS2 and properties along the line of route by visiting:

www.gov.uk/government/collections/hs2-property

Find out if you're eligible for compensation at:

www.gov.uk/claim-compensation-if-affected-by-hs2

Holding us to account

If you are unhappy for any reason you can make a complaint by contacting our HS2 Helpdesk team. For more details on our complaints process, please visit our website:

www.hs2.org.uk/how-to-complain

Contact Us

Contact our HS2 Helpdesk team all day, every day of the year on:

 Freephone **08081 434 434**

 Minicom **08081 456 472**

 Email **HS2enquiries@hs2.org.uk**

Write to:

FREEPOST

HS2 Community Engagement

Website **www.hs2.org.uk**

To keep up to date with what is happening in your local area, visit:
www.HS2inyourarea.co.uk

Please contact us if you'd like a free copy of this document in large print, Braille, audio or easy read. You can also contact us for help and information in a different language.

HS2 Ltd is committed to protecting personal information. If you wish to know more about how we use your personal information please see our Privacy Notice
<https://www.gov.uk/government/publications/high-speed-two-ltd-privacy-notice>

Reference number: HS2-MW-EK-Ph1-Ar-Ce-C2-CR-2-11/05/2022

High Speed Two (HS2) Limited, registered in England and Wales.

Registered office: Two Snowhill, Snow Hill Queensway, Birmingham B4 6GA.

Company registration number: 06791686. VAT registration number: 888 8512 56