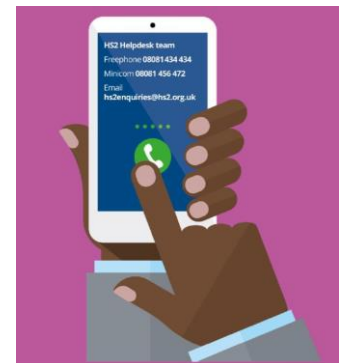


Contact our HS2 Helpdesk team on **08081 434 434**

HS2 Update

North Chilterns Area | July 2021

High Speed Two (HS2) is the new high speed railway for Britain. In response to COVID-19 we have worked hard to ensure that our working practices are fully aligned with the Site Operating Procedures produced by the Construction Leadership Council. These procedures have been endorsed by Public Health England. We will be keeping our local website www.hs2inbucksandox.co.uk up to date with information on our works in the local area.



Update on our continuing works

Over the next couple of months, you can expect to see the following works in the local area;

- Ground Investigation (GI) works;
- Utility works including trial holes;
- Water main protection works on the A413 south of Wendover – July/August;
- Security gatehouse development work in Great Missenden;
- Chalk trial completion at Great Missenden - July;
- Drainage works with microbore tunnel at Great Missenden;
- Haul road progression across the area after installation of crossing points;
- Excavation, movement and storage of earthworks;
- Several breaks from highway in the area to allow for our site access – these will include the need for some short duration traffic management;
- Batching plant delivery to Wendover Green Tunnel compound and installation;
- Demolition of affected properties in the area;
- Continued clearance of vegetation and fencing along the line of route from Great Missenden up to Stoke Mandeville where traffic management will be needed in areas close to the A413;
- Enabling works for the diversion of Nash Lee Road, and;
- Water management works in the form of drainage ponds throughout the area.

Join us online... Virtual one-to-one meetings

We would like to invite you to book an appointment for a virtual one-to-one meeting with our engagement team.

27th July 2021

They will be available to answer your questions about the HS2 programme and works in your area.

Sign up for the above date on the HS2 events page.

www.hs2.org.uk/events



Update on works

Leather Lane and access road

We have completed the first stage of constructing our crossing points across the Hill-top lanes. There are still some activities which we need to return to complete, such as installing the traffic lights that will control the traffic flows. There will be further work required along Rocky Lane which will be undertaken in the summer to finish the crossing point. We have undertaken careful vegetation clearance and tree felling in the areas as well. Following on from community feedback, we have been reviewing what was needed for removal, especially from Leather Lane. We are pleased to say, we have managed to retain more trees in the area. We have commitments in the HS2 Environmental statement to only remove minimal amounts of vegetation for our works and all surveys. These works are done sensitively with ecology surveys and ecologists present on site, when required. We have also had great collaboration with the community, that will see wood and chippings being turned into wood carvings, benches or used to support local footpaths.

Concrete batching plant

We are constructing a concrete batching plant at the Chipping Warden compound. A concrete batching plant is used to create, store and distribute concrete locally to the project. This will help to take additional HGVs off the road. All batching plant activity is very well controlled and monitored. The modern equipment that we use has a 'sealed system.' Cement is pumped into silos and the mixing process prevents dust escaping into the atmosphere.



Re-surfacing of Leather Lane for access road crossing points.

Piling in Wendover

In the Autumn, there will be a need for piling works to be undertaken over weekends. The piling works need to be in place adjacent to the Network Rail line. For safety, we have to undertake these works at night, when there are no trains running. This will enable us to have safe access to the Network Rail line. We will be working outside of core working hours during nightworks and this may cause some disturbances. We aim to complete these works quickly and efficiently.

Works need to be in place adjacent to the Network Rail line. For safety, we have to undertake these works at night, when there are no trains running. This will enable us to have safe access to the Network Rail line. We will be working outside of core working hours during nightworks and this may cause some disturbances. We aim to complete these works quickly and efficiently.

Appointments

With COVID having changed the way in which we engage with communities, we have been offering virtual one-to-one appointments. These appointments allow individuals from communities to speak with members of our engagement team as well as our wider team. During these appointments a variety of topics can be discussed, from construction updates and queries, through to funding, volunteering, and job opportunities. Due to the first appointments selling out quickly, we will now be repeating them monthly. We would like to thank those that attended and would welcome anyone who has questions to book a session through the HS2 Events page

www.hs2.org.uk/events.

MULTIPLE DATES

HS2 and EKFB: North Chilterns Area virtual one-to-one meetings

by HS2 Community Events [Follow](#)

Free

 [Select A Date](#)

Compound updates

The design of the Great Missenden security gatehouse has now been completed. Its construction began in June and it will soon be fully operational. The compound lighting has been designed to be dimmer and lower in height than that on the A413. The lighting will be pointed downwards, meaning 95% of the light will be directed within the compound, reducing sky glow in the darker months. The compound will be operational between the hours of 7am and 7pm but we will need to maintain a security presence overnight. During these overnight hours, the column lighting will be turned off in favour of strip lighting around the interior perimeter.

The Small Dean compound, adjacent to Grove Farm, will now be much reduced in size. The team will instead be taking up serviced office space in the area. The satellite compound on the A413 London Road, adjacent to Boswells Farm, is nearing completion. The compound will be used to launch the Small Dean viaduct over the road.

Hill-top lanes

From July we will be completing the crossing points for our internal haul road in Leather Lane, Bowood Lane and Rocky Lane. The crossing points will enable further construction of the internal haul road. This will allow us to remove many HGVs and other vehicles from the local road network. The crossing points will enable the Hill-top lanes to be continually used by local road users while keeping them safe from our site plant and vehicles. To complete these works, we will need to implement full road closures and a diversion.

Footpaths

From May, we saw the implementation of the footpath closure. This closure was put in place in the areas around Great Missenden, Wendover Dean and the Lee. This was done to support the construction of our internal haul road and the HS2 rail line. Public rights of way, which run close to or are directly affected by our work, are closed for the safety of all users. With support from the local council and groups, we have created diversions and routes that will still allow access from the well-trodden routes leading from Kings Lane down towards Wendover and Great Missenden. Shortly, we will be confirming and publishing the notification for the Wendover and Aylesbury area footpaths. For more information please see the full notification on the works 'In your area' section on the HS2 website.

Extended working hours

An application has been made to Buckinghamshire County Council to extend the working hours for the earthworks between South Heath and Rocky Lane. If granted, an extra working hour would be added to the start and end of each weekday.

We would not be permitted to conduct any works or start any plant in the set-up and shut down period each day. The extended working hours would be in effect from 1st March to 31st October each year and would not include weekends. The benefits of this are taking advantage of daylight working hours which minimises lighting needed and reduces the impact of mud being tracked onto local roads as the seasons tend to be drier and we can also maximise the time available for working so we aren't held up by winter weather conditions.

Contact our HS2 Helpdesk team on **08081 434 434**

All excavated materials are being kept within the site to form soil

stockpiles, embankments and to support structures such as the viaducts in this area. None of the excavated materials will be taken away onto the A413.

Other news

EKFB has now registered with the Considerate Constructors "Ultrasite" Scheme.

An independent assessor will be scoring our sites against the principles of the scheme which include: site appearance, respecting communities, protecting the environment, securing everyone's safety and valuing our workforce. EKFB's aim is to exceed in all areas of the Code and actively seek to improve not only our own performance but that of our supply chain.

We have also started to introduce Plinx hard hat technology to our sites. These devices use wireless technology to monitor social distancing and warn staff to keep their distance from each other. They also warn operatives if they come too close to working plant machinery.



Example of a Plinx hat

Keep up to date with our works

We're moving your local website within the HS2 website

This summer we will be moving the contents of [HS2inbucksandbox.co.uk](https://www.hs2inbucksandbox.co.uk) over to the 'In your area' section of the main HS2 website [HS2.org.uk/in-your-area](https://www.hs2.org.uk/in-your-area). We are also changing the way that we issue email updates about the project and giving you more choice about how you would like to receive information from us.

We have published local community landing pages for each section of the route between London, the West Midlands and Crewe. These provide information about HS2 within each area. Over the coming weeks we will be adding further pages and information to each area. We are aiming to complete this exercise in July this year.

You can continue visiting [HS2inbucksandbox.co.uk](https://www.hs2inbucksandbox.co.uk) for all information about our works in your area.

We're asking you to sign up for notifications to continue to receive updates from HS2

As part of the move, we will stop issuing email updates via Commonplace. We will continue to produce regular email updates about the project, including notifications of our upcoming works, how it's being constructed and what we're doing to make it less disruptive. If you are signed up to receive updates from us or would like to, we are asking that you sign up to receive information from HS2 directly.

If you would like to continue to receive updates from HS2 you can sign up for email notifications at engagement.hs2.org.uk/join-mailing-list.

FAQ

Q: How are you protecting birds during nesting season?

A: Before any work close to trees or vegetation is undertaken, an ecologist attends the site and carries out a detailed survey to ensure no bats, birds or nests are present. If any wildlife or nests are discovered, the tree is left alone until the birds leave the nest, and a boundary is put in place to ensure they are not disturbed.

Q: Are you tracking your HGVs to ensure they follow approved routes?

A: We have a vehicle management system in place to ensure we can track all regular vehicles and hauliers delivering to our sites. We can monitor the routes taken, reroute vehicles where necessary and reject any vehicles who do not comply with our strict criteria.

Q: How are you managing dust at your work sites?

A: We are using dust suppression systems at our sites. We spray down work areas, haul routes and plant using water bowsers to prevent dust from becoming airborne. We also use dust monitoring techniques to ensure we can monitor air quality levels close to our work sites.



Your questions answered

Your local Parish Councillors ask us a series of questions...

Colin Sully, The Lee Parish Council

Q: What is the programme of closures for the Hill-top lanes and for the A413, and are they being kept separate?

A: We've made commitments that we will keep construction traffic off the Hill-top lanes and that if we need to undertake a closure on one lane, then the others will be kept open to allow local traffic access through and we will try to mitigate any closures of the A413 where we can. This will either be by single lane closures with off peak working or night time closures where we can. The first closures on the Hill-top lanes have been completed and we will be going back to finish the second stage of works late summer 2021. All approved traffic diversions will be along the A413 and will not divert traffic onto the lanes.

Q: When will road surface and verges on Kings Lane, Hunts Green be repaired?

A: Road surfaces and their repairs sit within the responsibility of Buckinghamshire Council. As the road networks are outside of our project land take, we can't complete the re-surfacing. We have however, when completing the works for the site access road crossing points, extended our areas of surfacing to try and restore and improve the road surface in close proximity of our works.

Q: How can local residents input to the design of the many over-bridges?

A: The local over bridges are included on what's referred to as our Schedule 17 submissions. These submissions are information given to Buckinghamshire Council for approval, although under the HS2 Act itself, the main planning permissions have been granted. Unfortunately, we don't invite input from residents but all planning submissions are available to view on the council planning portal.

Mop Denson, Great Missenden Village Association

Q: What have you done for the local community recently?

A: We've had a good uptake on our timber and chippings to the community for footpaths etc. We undertook a litter pick and some vegetation clearance in the underpass near footpath GM1/12. But there is always more we can give! If there is anything we can do to support the communities then do let us know.

Community Investment

We are currently working with charity **Transitions UK** (Aylesbury and Wendover branches) to provide 1-2-1 mentoring service for young people, aged 13-21 years, who are at risk of or already involved in criminal activity, or young people that are at risk of criminal exploitation.

To date we have trained over 500 construction candidates in partnership with various training providers, including the Bucks College Group. For information on careers and local job vacancies, visit **EKFB.com/careers**.

We are also planning a range of exciting **STEM** activities which we will launch in the next academic year when covid restrictions are eased. We recently launched our **TimeBank** initiative, where staff are encouraged to do one day of volunteering per year.

If you have a suggestion for volunteering or community investment, whether it be a spot of gardening or a careers talk, then please get in touch.



We are keen to support with volunteering and fundraising work for local charities.

If you would like to know more then please contact the **HS2 Helpdesk**.

Compliments from the Community...

"Thank you Elena for coming such a long distance to see our school and horticulture area. Great to meet in person!"

"Thank you for the map and for a courteous and informative meeting with the two of you. We hope all the others run as smoothly!"

"Thanks so much for your effort to put this together, and particularly Craig who I realise has been the driver of the plan. I can see how challenging this has been. This sounds like an excellent compromise"

"The new EKFB security team in Jones Hill Wood are very polite and respectful"



Keeping you informed

We are committed to keeping you informed about work on HS2. This includes ensuring you know what to expect and when to expect it, as well as how we can help.

Residents' Charter and Commissioner

The Residents' Charter is our promise to communicate as clearly as we possibly can with people who live along or near the HS2 route.

www.gov.uk/government/publications/hs2-residents-charter

We also have an independent Residents' Commissioner whose job is to make sure we keep to the promises we make in the Charter and to keep it under constant review. Find reports at:

www.gov.uk/government/collections/hs2-ltd-residents-commissioner

You can contact the Commissioner at:
residentscommissioner@hs2.org.uk

Construction Commissioner

The Construction Commissioner's role is to mediate and monitor the way in which HS2 Ltd manages and responds to construction complaints. You can contact the Construction Commissioner by emailing:
complaints@hs2-cc.org.uk

Property and compensation

You can find out all about HS2 and properties along the line of route by visiting:

www.gov.uk/government/collections/hs2-property

Find out if you're eligible for compensation at:

www.gov.uk/claim-compensation-if-affected-by-hs2

Holding us to account

If you are unhappy for any reason you can make a complaint by contacting our HS2 Helpdesk team. For more details on our complaints process, please visit our website:

www.hs2.org.uk/how-to-complain

Contact Us

Contact our HS2 Helpdesk team all day, every day of the year on:

 Freephone **08081 434 434**

 Minicom **08081 456 472**

 Email **HS2enquiries@hs2.org.uk**

Write to:

FREEPOST

HS2 Community Engagement

Website **www.hs2.org.uk**

To keep up to date with what is happening in your local area, visit:
www.HS2inyourarea.co.uk

Please contact us if you'd like a free copy of this document in large print, Braille, audio or easy read. You can also contact us for help and information in a different language.

HS2 Ltd is committed to protecting personal information. If you wish to know more about how we use your personal information please see our Privacy Notice

<https://www.gov.uk/government/publications/high-speed-two-ltd-privacy-notice>

Reference number: 1MC12-EKF-IN-NTE-CS03-000006
HS2-MW-EK-Ph1-Ar-Ce-C2-Prog-works-49-07/10/2021

High Speed Two (HS2) Limited, registered in England and Wales.
Registered office: Two Snowhill, Snow Hill Queensway, Birmingham B4 6GA.
Company registration number: 06791686. VAT registration number: 888 8512 56