

**1MC12**

# HS2 Works Notification Greatworth Area Newsletter February 2022

Document no: 1MC12-EKF-IN-NTE-CS10-000015

Revision	Date	Author	Checked by	Approved by	Revision details	EKFB Reviewer (EKFB Contractors only)
P01	February 2022	Brenna Slade				

Stakeholder review required (SRR)	Purpose of SRR
<input type="checkbox"/> County / District / London Borough Council	<input type="checkbox"/> Acceptance
<input type="checkbox"/> LOV	<input type="checkbox"/> Approval
<input type="checkbox"/> LUL	<input type="checkbox"/> No Objection
<input type="checkbox"/> NRL	<input type="checkbox"/> Consent
<input type="checkbox"/> TFL	
<input type="checkbox"/> Utilities Company	
<input type="checkbox"/> Other (please specify)	

Contact our HS2 Helpdesk team on **08081 434 434**

# HS2 Update

Greatworth Area | February 2022

Covering the areas between Greatworth and Thorpe Mandeville

High Speed Two (HS2) is the new high speed railway for Britain. We are following Government and Public Health England (PHE) advice on working safely during the pandemic. As we increase face to face engagement, in addition to virtual engagement, we will ensure all events and meetings adhere to the guidelines. The health and safety of our workforce and the communities we work within is our priority. If you have any questions about this, please contact our Helpdesk to find out more. We will be keeping our local website [www.hs2innorthants.co.uk](http://www.hs2innorthants.co.uk) up to date with information on our works in the local area.

## Update on our continuing works

We are making good progress in the area from Greatworth to Thorpe Mandeville, with our Greatworth Green Tunnel Compound now well established and nearby earthworks continuing.

Over the late winter and into spring, you can expect to see the following works in the local area:

- Land surveys to measure land levels;
- Utility works including trial holes;
- Increased activity and workforce numbers at the 'Greatworth Green Tunnel' Compound;
- Operation of the recently installed batching plant;
- Localised vegetation clearance;
- Further construction of internal site access and haul roads to move people, material and earthworks along the line of the railway and reduce the use of local roads;
- Weather permitting, further excavation, movement and storage of earthworks; and
- Traffic management and temporary footpath diversions to carry out some of the above activities.



## Join us ...

### Drop-in sessions

In line with current Government guidelines, we are gradually reintroducing face to face events and engagement. The safety of our communities, stakeholders and staff remains a priority and we will ensure all events and engagement activities are Covid safe.

Please contact the HS2 Helpdesk or visit [hs2.org.uk/events](http://hs2.org.uk/events) for more information on events in your area.

[www.hs2.org.uk/events](http://www.hs2.org.uk/events)

## Update on works

### Greatworth Green Tunnel Compound

We have been completing the main facilities of the Greatworth Green Tunnel Compound over the summer and autumn, ready for more of our project team to use as their main work site in 2022. As the construction of the tunnel and other structures nearby commence. The facilities include offices, welfare facilities, materials laboratories, first aid facilities, car parking and a concrete batching plant. When the compound is no longer required for our construction activities, it will be removed, and the land returned to agricultural use.

### Concrete batching plant

We have constructed a concrete batching plant at the Greatworth Green Tunnel Compound. A concrete batching plant is used to create, store and distribute concrete locally to the project. Once our internal access road is completed, many of our mixer lorries will use it to travel along the HS2 route. This will take additional HGVs off the local highways, reducing our construction impact on the local community. The modern systems that we use operate a 'sealed system' which means that cement is pumped into silos and the mixing process does not allow dust to escape into the atmosphere.



The batching plant is now operational, allowing for the preparation and distribution of concrete in the local area.

### Site clearance, demolition and fencing

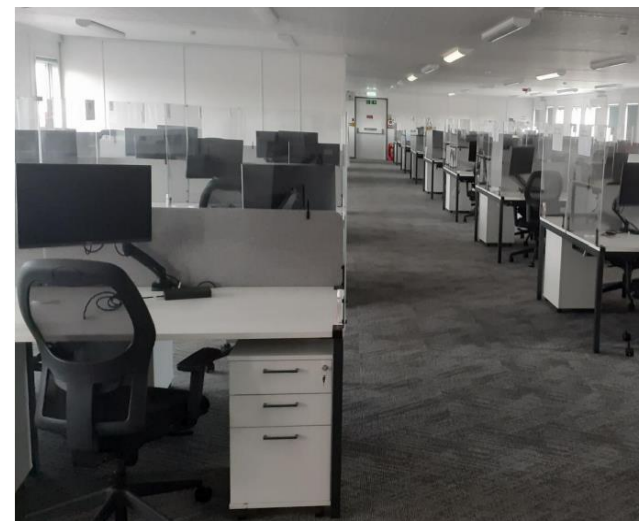
Ecological mitigation work has taken place throughout the autumn in preparation for the demolition of some buildings in the Lower Thorpe area. These demolitions will be required to enable us to commence the construction of the Lower Thorpe Viaduct. Some demolitions will also take place in the Greatworth Park area, in preparation for the Greatworth Green Tunnel.



*Greatworth Green Tunnel Compound.*



*The batching plant located at Greatworth Green Tunnel Compound.*



*New temporary offices located at our compound in Chipping Warden.*

## Temporary road construction

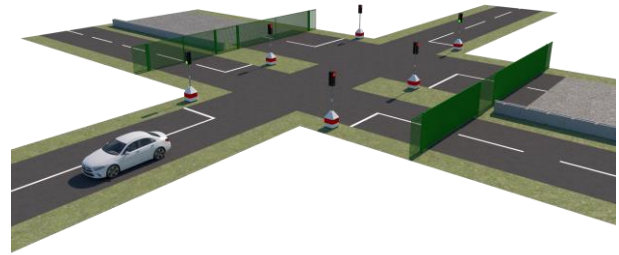
We have designed a temporary road to divert the B4525 Welsh Lane while we build the green tunnel. The road, known as 'The Greatworth T,' will take traffic away from our tunnel compound and tunnel construction areas. It will reduce the number of temporary road closures and diversions required, while also improving the connectivity between local villages. Construction is expected to begin in early 2022.

We are constructing an internal access and haul road to allow our construction traffic to move up and down the HS2 route and reduce the amount of construction traffic using the local highways. There are several locations near Thorpe Mandeville where these internal roads cross the public highway. We have recently completed a crossing area on Banbury Road, near Bulls Lane, where we reinforced the road to protect utilities underneath. In early spring, we will also be installing a crossing area on Banbury Lane, near Lower Thorpe. A further crossing point, south of Greatworth, is also being constructed on Radstone Road, between Brackley and Helmdon.



### Public Rights of Way closures and diversions

Where footpaths and bridleways meet our construction areas, we signpost a diversion route via other nearby footpaths. If there are no alternative paths, we aim to create a crossing area for users to safely cross our construction area. The safety of path users is paramount and so the crossing areas are only possible where it is safe and practical to do so. Due to earthworks commencing in the area between Welsh Lane and Sulgrave Road, we have diverted several footpaths and installed diversion maps and signs in the local area to direct walkers to a parallel footpath near Sulgrave.



**The image above, is an example of a plant crossing area, controlled with barriers and traffic lights. Crossing areas similar to this design will be installed where our access roads cross local highways.**

Further footpath diversions may be required in the area of Lower Thorpe this spring in the area where a footpath crosses Banbury Lane.

## Tunnel and viaduct construction

Since the summer of 2021, we have been excavating earth in the area between Welsh Lane and



Sulgrave Road, in preparation for the Greatworth Green Tunnel. Depending on the ground conditions and weather, these earthworks will continue throughout late winter and then increase as the weather improves in the spring. Preparations will also be made for building the foundations of the viaduct piers near Lower Thorpe.



*An artist's impression of what the Lower Thorpe Viaduct will look like in 10 years.*



## Your feedback matters to us...



HS2 Helpdesk is an email and freephone service available for all queries.



In your area, we are responding to queries in less than 4 days.

### You said, we did...



"The lighting is too bright at your sites at night"

We recently delivered a route wide briefing on minimising lighting at our sites overnight and ensuring we abide to the Code of Construction Practice.



"Can you help us run a Covid-safe community event at Christmas?"

We provided mobile lighting for a Christmas shopping event in Bucks and a school fayre in Northants, so they could take place safely outside.

In the last 6 months, we received 127 complaints across our 80km section:



55%

Traffic and transport



20%

Construction sites & impacts

We also received 103 compliments from our local communities:



30%

Community meetings & engagement

45%

Community investment & volunteering

## Frequently Asked Questions

### Some of our most commonly asked questions in your area

#### Q: I'm concerned about mud on my local roads from your construction sites.

A: We have a suite of road sweepers that are operational throughout our normal working hours, they cover our HGV routes as well as locations near our sites and compounds. Alongside this we have our Traffic Safety Control Officers who are on site daily, monitoring the road conditions, traffic congestion and more.

#### Q: Why are your worksites lit up at night?

A: We have 24/7 security at our construction sites and therefore we need appropriate lighting for the safety and welfare of our security staff. Where possible we switch off the majority of lights overnight and we ensure all lighting is correctly positioned and monitored in line with HS2's Code of Construction Practice.

#### Q: How can I get a quick response to a construction related query?

A: The HS2 Helpdesk is open 24 hours a day (08081 434 434 / [HS2enquiries@hs2.org.uk](mailto:HS2enquiries@hs2.org.uk)) and we thank you for raising your queries, comments and concerns with us – these allow us to improve how we work. In your area, EKFB are now responding to your queries and complaints within 3 working days on average.



## Community Investment

Throughout September, our five delivery teams within EKFB participated in a 'Race the Trace' which saw teams "race" the length of the HS2 trace that EKFB are delivering.

The Greatworth to Southam team raised over £1000 which was donated to Dogs for Good. All five delivery teams together have helped to raise a staggering £6073 for local charities up and down the trace.

We are proud to support an organisation who's mission is to "bring trained dogs and people together to help them overcome specific challenges, in order to enrich and improve the lives of both."

**We are keen to support with volunteering and fundraising work for local charities and organisations. If you would like to know more then please contact the HS2 Helpdesk.**



## HS2 Funds for the community

There are two funds which are available to add benefit to local communities disrupted by the construction of Phase One of HS2 – **The Community and Environmental Fund (CEF)** and the **Business and Local Economy Fund (BLEF)**.

In 2021, funds from CEF enabled Greatworth Community Transport Association to lease a 16-seater community minibus. Greatworth Community Transport Association are now able to provide a wide range of transport services to the local community including: regular journeys to Brackley, use by Greatworth Primary School and Greatworth Pre-School for curricular and extra-curricular activities, as well as other community organisations and for occasional excursions to cultural and sporting events.



*This image above is of the minibus currently being used by the Greatworth Community Transport Association, 2021.*



# Keeping you informed

We are committed to keeping you informed about work on HS2. This includes ensuring you know what to expect and when to expect it, as well as how we can help.

## Residents' Charter and Commissioner

The Residents' Charter is our promise to communicate as clearly as we possibly can with people who live along or near the HS2 route.

[www.gov.uk/government/publications/hs2-residents-charter](http://www.gov.uk/government/publications/hs2-residents-charter)

We also have an independent Residents' Commissioner whose job is to make sure we keep to the promises we make in the Charter and to keep it under constant review. Find reports at:

[www.gov.uk/government/collections/hs2-ltd-residents-commissioner](http://www.gov.uk/government/collections/hs2-ltd-residents-commissioner)

You can contact the Commissioner at:  
[residentscommissioner@hs2.org.uk](mailto:residentscommissioner@hs2.org.uk)

## Construction Commissioner

The Construction Commissioner's role is to mediate and monitor the way in which HS2 Ltd manages and responds to construction complaints. You can contact the Construction Commissioner by emailing:  
[complaints@hs2-cc.org.uk](mailto:complaints@hs2-cc.org.uk)

## Property and compensation

You can find out all about HS2 and properties along the line of route by visiting:

[www.gov.uk/government/collections/hs2-property](http://www.gov.uk/government/collections/hs2-property)

Find out if you're eligible for compensation at:

[www.gov.uk/claim-compensation-if-affected-by-hs2](http://www.gov.uk/claim-compensation-if-affected-by-hs2)

## Holding us to account


If you are unhappy for any reason you can make a complaint by contacting our HS2 Helpdesk team. For more details on our complaints process, please visit our website:

[www.hs2.org.uk/how-to-complain](http://www.hs2.org.uk/how-to-complain)

## Contact Us

Contact our HS2 Helpdesk team all day, every day of the year on:

 Freephone **08081 434 434**

 Minicom **08081 456 472**

@ Email **[HS2enquiries@hs2.org.uk](mailto:HS2enquiries@hs2.org.uk)**

Write to:

**FREEPOST**

**HS2 Community Engagement**

Website **[www.hs2.org.uk](http://www.hs2.org.uk)**

To keep up to date with what is happening in your local area, visit:  
**[www.HS2inyourarea.co.uk](http://www.HS2inyourarea.co.uk)**

**Please contact us if you'd like a free copy of this document in large print, Braille, audio or easy read. You can also contact us for help and information in a different language.**

HS2 Ltd is committed to protecting personal information. If you wish to know more about how we use your personal information please see our Privacy Notice  
<https://www.gov.uk/government/publications/high-speed-two-ltd-privacy-notice>

**Reference numbers:** HS2-MW-EK-Ph1-Ar-Ce-C3-Prog-works-20-02/12/2021  
1MC12-EKF-IN-NTE-CS10-000015

High Speed Two (HS2) Limited, registered in England and Wales.

Registered office: Two Snowhill, Snow Hill Queensway, Birmingham B4 6GA.

Company registration number: 06791686. VAT registration number: 888 8512 56