

HS2

ECRG Presentations & Slides

28 November 2023

Please note this meeting will start at the usual time of 5.20pm

Refreshments will be served from 5pm

Agenda

Time	Topic	Presenter
17:20	1. Welcome and Introductions	David Demolder
17:30	2. Minutes of the September meeting	David Demolder
17:35	3. Euston Project update	Andy Swift, Euston Area Client Director HS2 supported by Richard Crathern
18:05	4. Meanwhile Uses update	Katie Fulcher, HS2 supported by The Euston Partnership and Lendlease
	5. Flash Report	NOTE only
18:25	6. HS2 Update	
	6.1 Mace Dragados	Natalie Kirkwood to take any questions
	6.2 Network Rail On Network Works	Jonathan Cooke to take any questions

Agenda

Time	Topic	Presenter
	6.3 SCS	Neil Van Kervel, David Hannon and Amy Allen to take any questions
18:40	7. Actions Log	David Demolder
18:45	8. Community Questions/AOB	David Demolder
19:00	Meeting dates for 2024 Tuesday 19 March Thursday 6 June Tuesday 24 September Thursday 28 November	David Demolder

HS2

1. Welcome and introductions

David Demolder

HS2

2. Minutes of the last meeting

David Demolder

- To APPROVE the minutes of the September meeting

HS2

3. Euston Project update

Andy Swift, supported by Richard Crathern

- To receive an update on the Prime Minister's recent announcements

HS2

4. Meanwhile temporary uses

Katie Fulcher - The Euston Partnership and Lendlease will be available to answer any questions

- To receive a briefing on
 - Progress since the last meeting
 - Engagement opportunities

Updates since last meeting

- Community operator selected for the Maria Fidelis Annex
- Launch of a Euston Meanwhile Uses (EMU) fund and workshop for prospective applicants
- Euston Square Gardens West design engagement

**DISCOVER
EUSTON**

**EUSTON MEANWHILE USE FUND
INFORMATION LEAFLET**



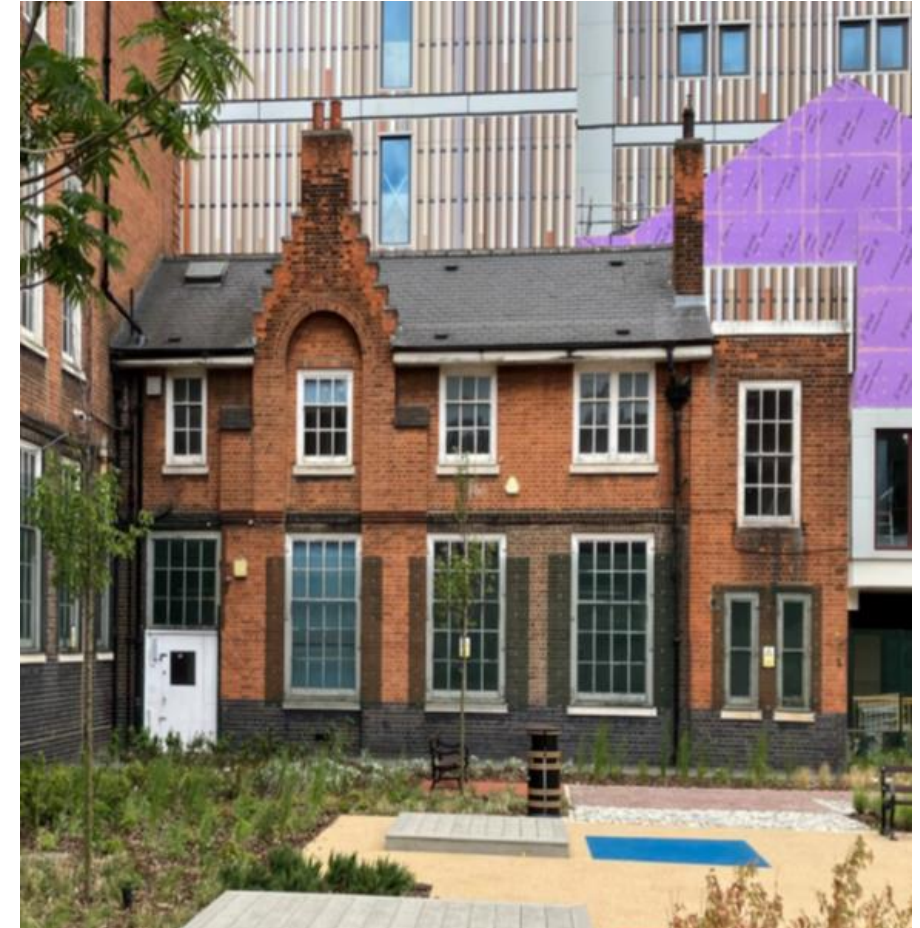
The Euston Meanwhile Use (EMU) Fund will provide grants of up to £10,000 for community-led projects.

We are seeking applications for any projects that will benefit the local community, whether by utilising any of the 'meanwhile' spaces or by supporting communities that have been impacted by the construction slow-down at Euston.

'Meanwhile use' is the short-term use of temporarily empty buildings or space for the benefit of the community. Recent examples in London include Gaia's Garden at Holborn Viaduct and the Story Garden at King's Cross.

The funding is in addition to and distinct from the HS2 Community and Environment Fund and the Business and Local Economy Fund (CEF/BLEF), which remain open to eligible organisations across the HS2 route.





Update on other sites being considered for meanwhile use

Commercial operators

- Zone 5
- Two Towers

Community spaces

- Maria Fidelis outdoor space – community growing beds
- National Temperance Hospital (NTH) Accommodation Area Phase 2 – play space proposal
- Euston Square Gardens West



Illustrative of how NTH space can be expanded once cabins removed

Euston Square Gardens West design engagement

In person and online sessions held in October to seek feedback. Following this we have:

- Reduced the width of the path
- Incorporated more seating away from the path and spaces to pause
- Included more biodiverse lawn space
- Provided a flexible space for community activities



Latest concept design following engagement – design still to be finalised

HS2

5. Flash Report

- To note the flash report

HS2

6. HS2 Update

- To note the previously circulated presentation slides
 - Please note that at the request of the Contact Group slides will not be presented
 - Members of the team will be available to take any questions

HS2

6.1 Mace Dragados

Natalie Kirkwood to take any questions

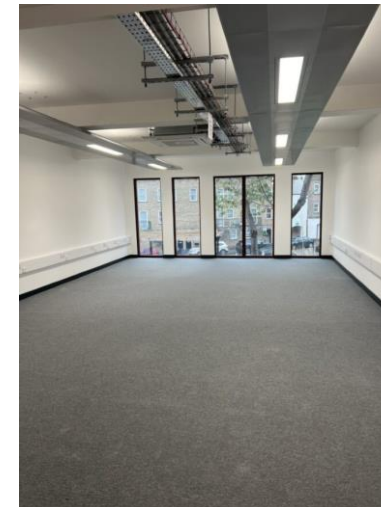
Maria Fidelis - Site Accommodation

Key progress:

- Mechanical Electrical and Plumbing (MEP) installation ongoing to all floors.
- Fitout works and commissioning progressing through lower floors.

External

- Planter install continuing to South Elevation
- All external works and landscaping for Construction Skills Centre (CSC). Facility now handed over to LB Camden.



Vehicle turning circle / hammerhead complete - Stephenson Way

Key Progress:

- Current hoarding line adjusted to increase the road width at the end of Stephenson Way
- 15 meters of cobblestones relayed on the road surface including grouting to bind the stones together
- Removal of CLD fence
- Installation of graphics on hoarding
- Removal and replacement of the existing road markings



Vehicle turning circle. Hoarding stepped back to increase road width

Utilities – Re-Start Scope – Progress To Date

- Obstructions in MH11 due to concrete found. (reception pit for first tunnel drive) broken through and formation reached
- TBM launched on 19th October and making good progress on the first (of four) tunnel drives
- Obstructions in removed in MH09 by UKPN cable / live and dead, removed by UKPN. Flume installed and existing sewer diverted to enable works to progress (critical path activity)
- Installation of 1000mm and 250mm diameter water mains in Cobourg St north have commenced



MH11

Bus stops J and K – works completed

- Bus Stop J (Robert Street) returned to its original location opposite the bus shelter. The bus stop island and bus stop bypass have also been moved to this location to continue to protect cycles travelling northbound on Hampstead Road
- Bus stop K (Robert Street) has been moved approximately 70m south, closer to the pedestrian crossing near Drummond Street. Residents can use this crossing to access southbound bus services.



6.2 Network Rail On Network Works Update To NOTE the works lookahead.

Jonathan Cooke to take any questions

Euston station update

On Network Works



Working in
partnership with

HS2

28 November 2023 – Euston Community Representative Group

Euston station – parcel deck (above platforms)



Work is continuing to install a façade on the west side of Euston to protect the station building from the elements where work to prepare for the new HS2 station has been paused.



The new façade which is being constructed from steel and will feature fabric panels is due to be completed in early 2024.

New access point at Clarkson Row

As part of the On Network Works 'Stage A' project, Network Rail is constructing a new access point at Clarkson Row to enable maintenance to be carried out to railway equipment on the eastern side of the station. The equipment was relocated during an earlier phase of work to prepare for HS2.

Work is now progressing at street level to construct the new vehicular access point. We recently wrote to local residents to advise them about the next phase of work – we'll continue to keep people informed.



Piazza canopy works and immediate capacity measures



An interim canopy is to be installed on the Euston station piazza.

The canopy will provide a partially sheltered route from the assisted travel drop off point to the station entrance.

Other improvements to improve passenger experience are ongoing:

The Euston Immediate Capacity Measures (EICM) project team are continuing to deliver their programme of work which has involved installing new and improved customer information screens on the concourse and piazza. The old departure boards have now been removed.

Mornington Street bridge update



Network Rail, HS2 and SCS continue to work together to reopen Mornington Street bridge to local traffic. Once reopened, it is planned that the road will stay open until tunnelling work begins, which is due to start in 2026.

The bridge will be reopened with a temporary weight restriction of 3 tonnes. For safety reasons, Network Rail and SCS will continue to monitor the bridge whilst work takes place on the railway beneath.

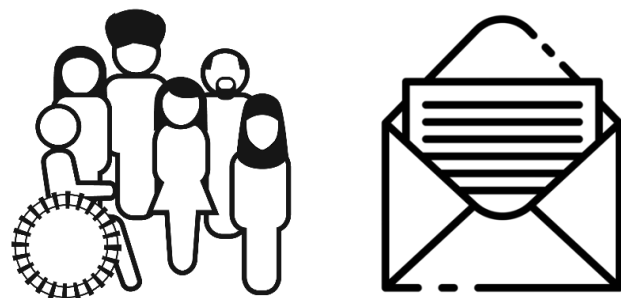
In the meantime, the bridge remains open to cyclists and pedestrians.

We are sorry for the inconvenience this closure is causing and will keep local people informed as soon as we have a finalised date to reopen the road.

Recent communications from Network Rail

Letters / postcards issued to our lineside neighbours:

- Three-month look ahead letter providing an overview of work in the Euston area covering December 2023 – February 2024 will be issued w/c 27 November.
- Euston station ramp upgrade work postcard issued 15 November 2023.
- Clarkson Row update letter issued 9 November 2023.



Christmas and New Year railway improvement work:

Rail passengers in Network Rail's North West and Central region will benefit from a better, more reliable railway in 2024 thanks to upgrade and maintenance work taking place this Christmas and New Year.

In the Euston area, engineering work is minimal between 24 December and 2 January, however bridge and tunnel examinations will take place 25-26 December, as well as upgrades to the overhead line equipment will take place between Euston station and Watford.



HS2

6.3 SCS

Amy Allen, Neil Van Kervel and David Hannon to take any questions

HS2

Adelaide Road and Euston Approaches

SCSJV

Adelaide Road Headhouse & Vent Shaft site



Current and upcoming works*

Adelaide Road Headhouse & Vent Shaft programme	2023	2024			
	Oct - Dec	Jan - Mar	Apr - Jun	Jul - Sept	Oct - Dec
Headhouse					
Groundworks - Excavate temporary working platform & crop piles					
Groundworks - Install under slab ducts & Earthmat					
Groundworks - Waterproofing and Headhouse Ground Slab construction					
Utility Works					
Loudoun Road – Surveys and Trial Holes of medium pressure gas main					
Eton Avenue (junction of Primrose Hill Road) - Surveys & Trial Holes of medium pressure gas main					
Kilburn High Road (crossing junction of Oxford Road & Greville Road) – gas main diversion works					
Site demobilisation/temporary shut-down for pause – additional details to follow					
Demobilisation					
Headhouse & Vent Shaft works paused					

*the dates for these phases might change. We'll provide updates at hs2.org.uk/in-your-area/

Adelaide Road Vent Shaft

Works update



Christmas

The site will close at lunchtime Friday 22 December 2023, reopening Tuesday 2 January 2024



Remaining works 2023-24 before safe stop:

- Headhouse piling works and excavations
- Headhouse base slab
- Site to be brought to a safe stop after completion of the base slab (Spring 2024)

Ongoing:

- Instrumentation & monitoring (I&M) works will continue during works pause

Works pause anticipated to start **mid-June 2024** and finish **late March 2025**

Traffic management on Adelaide Road:

2 December 2023

8am – 1pm single lane closure to enable repair of welfare cabin roof leak. Temporary closure of bus stop R during works.

[Advance Notification Letter here](#)

Works under way

Planned works

HS2 worksite

Prisms have been installed within the Adelaide Road Nature reserve and NR trackside, to monitor any movement of the embankment ahead of future tunnelling works (to provide a baseline of data). Monitoring will continue during the works pause and future tunnelling works

Head house piling works complete: 159no 1.2m diameter concrete piles have now been installed and the piling rig was removed by crane during a 1 day road closure on Saturday 21 October.

The temporary working platform is now being excavated and piles cropped **November – mid-December 2023**. This is in preparation for the Headhouse base slab concrete pours.

*the dates for these phases might change. We'll provide updates at hs2.org.uk/in-your-area/

Adelaide Road Vent Shaft

Engagement update

A community drop-in event was held on **10 September 2023, 5-7pm** at the Adelaide Road Vent Shaft (ARVS) site.

This was an informal meeting for members of the local community to visit and have an opportunity to meet members of the ARVS site team, the SCS & HS2 Engagement teams and an Environment specialist.

The intent was to not only provide updates/answer questions about our ongoing works and the future pause to works (from circa June 2024) but also allow people to see 'behind the hoarding'.

We held the event in a ground floor meeting room but also invited keen community members to walk up to the first floor on the external staircase and have a view of the worksite - offering a perspective they cannot see from Adelaide Road and further context about the worksite layout.

There were 9 registrations in advance and 10 total attendees.

Key topics of interest:

- Pause to works
 - Why has the pause to works not started?
 - How will the 'pause' affect developments?
- Works lookahead
 - Are there any upcoming works which will affect the highway/traffic?
 - Plan for the coming months/what must be completed before pause?
- Other
 - Head House future operational noise levels
 - Dust suppression measures

Adelaide Road Vent Shaft

Engagement update continued

- Recent Adelaide Road Newsletter can be found here: [Newsletter Oct-2023](#)
- Advance notification letter regarding upcoming trial holes on Loudoun Road and Eton Avenue can be found here: [Trial holes - Dec 2023](#)
- Advance notification letter regarding Saturday single lane closure (during core hours 8am – 6pm) can be found here: [Lane closure - Dec 2023](#)
- Virtual 1:1s for residents local to Adelaide Road take place monthly. Residents can book a 20-minute slot between 3pm and 6pm. Sessions were available on 20 September, 18 October & 15 November.
Next date: **January 2024 (TBC)**
- Virtual 1:1 drop-in sessions for future tunnelling works (twin-bore Euston Tunnel & twin-bore Northolt Tunnel East) take place monthly. Anyone can book a 20-minute slot between 3pm and 6pm. Sessions were available on 19 September, 17 October & 21 November, with 3 registrations & attendees in September. Topics included overall status of HS2 and whether tunnelling works would continue, general routeway tunnelling questions.
Next date: **January 2024 (TBC)**
- Next face-to-face community meeting is proposed for **late January 2024** to be held on site again. Topics to cover will be:
 - Update on the future Head House design following the Sch. 17 Plans & Specifications Consent approval in May 2023
 - How the site will be left during the pause to works

Euston Approaches Construction update



Mornington Street bridge

Network Rail and HS2 have agreed to re-open Mornington Street bridge to vehicles until tunnelling work begins (now planned for 2026).

The bridge will be reopened with a temporary weight restriction of 3 tonnes. For safety reasons, Network Rail and SCS will continue to monitor the bridge whilst work takes place on the railway beneath.

The new weight limit will remain in place until we close the bridge for five years in late 2025 for tunnelling.

We are currently applying for the required highway consents which would enable us to reopen the bridge at the new weight restriction.

The bridge remains open to cyclists and pedestrians.

We are sorry for the inconvenience the closure is causing and will provide an update as soon as we have more details.



Utilities work

UKPN cable diversion - summer 2022 to autumn 2025

We are installing a new cable route from Lidlington Place to Varndell Street to replace existing route across railway and through Ampthill Estate.

We will continue a range of road, lane and footpath closures on Hampstead Road and neighbouring streets to complete these works (along white dotted line).

Once we have extended the bridge, we will put the utilities back on Hampstead Road.

Traffic impacts	Start	Finish
Lane closures on Hampstead Road	Jun 2023	Dec 2023
Road closure on corner of Stanhope Street and Varndell Street	Jan 2024	May 2024

Work in Ampthill Estate – summer 2024

We need to install connections from the new cable route on the main road to the substations at bottom of Gillfoot and Oxenholme. This is to maintain power to the substations, when the current cable route is decommissioned



Temporary change to lorry route

Jan to May 2024

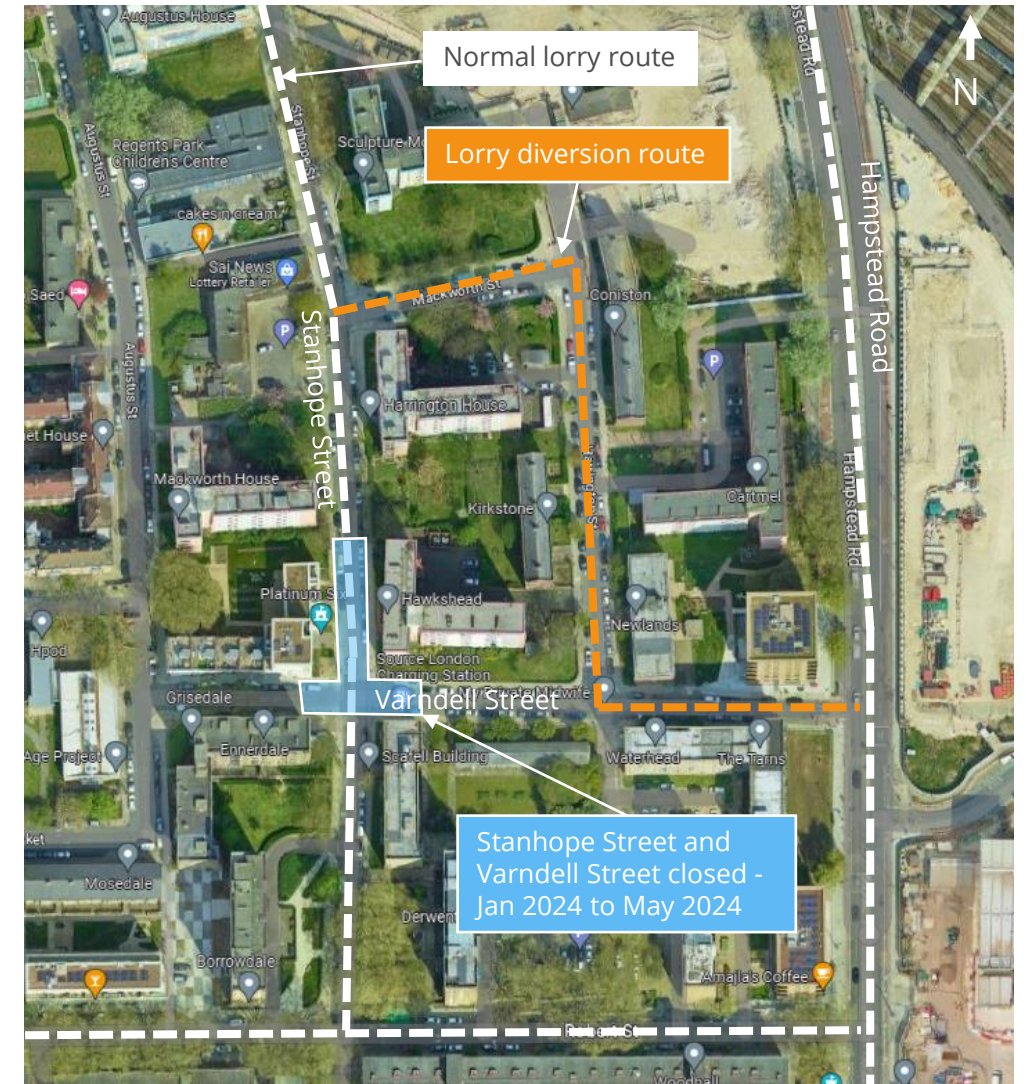
We will temporarily divert our lorry route, while our normal route is blocked due to road closures on Stanhope Street and Varndell Street

Lorry diversion route

Stanhope Street → Mackworth Street → Harrington Street →
Varndell Street → Hampstead Road

General traffic will also be diverted via this route while the junction of Stanhope Street and Varndell Street is closed

This is a temporary diversion. Once Stanhope Street is reopened, we will return to our normal lorry route.



Headhouses

A headhouse is a building located above-ground, which contains rail machinery and provides access to the tracks or tunnels below ground for maintenance or emergencies.

Both headhouses will provide safe access to the tunnels for maintenance and emergency services from Park Village East.

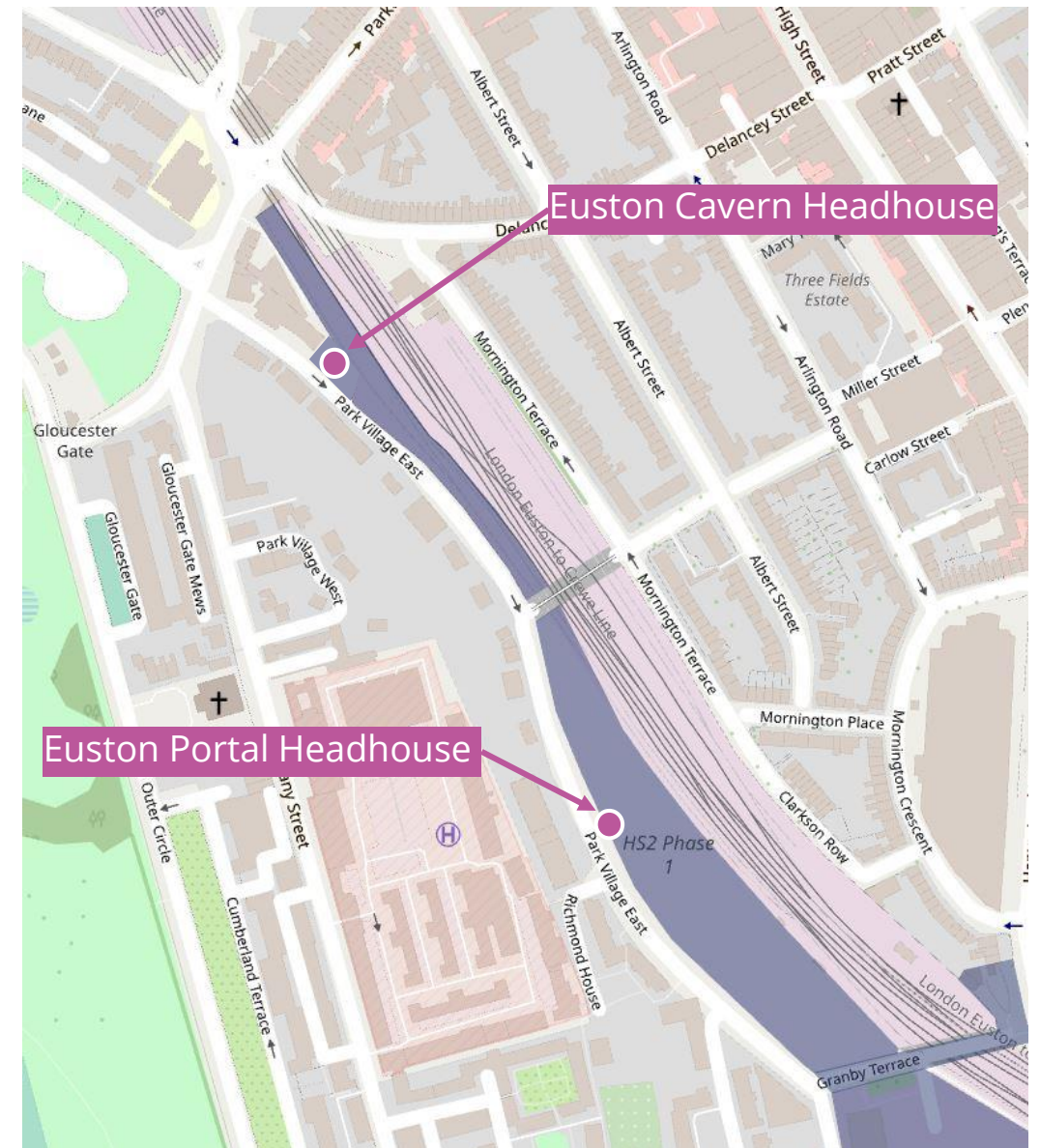
Euston Cavern Headhouse

- Located above the Cavern Shaft next to 1 Park Village East
- Planning application was approved in October 2022

Click on the link for the [Cavern Headhouse final design](#)

Euston Portal Headhouse

- Located on top of the concrete box, where the tunnels connect to the box south of Mornington Street bridge
- Plan to present the **initial design in January 2024** for your feedback. (location and size are fixed to meet technical requirements)



Exchanging Places event

- SCS will be hosting an **'Exchanging Places'** event in front of our offices on Harrington Street
- The event is aimed at making cyclists and other vulnerable road users aware of the dangers around construction vehicles
- The event will allow members of the public to experience and compare driver visibility in our lorries to encourage greater road safety awareness
- The London Metropolitan Police will be in attendance

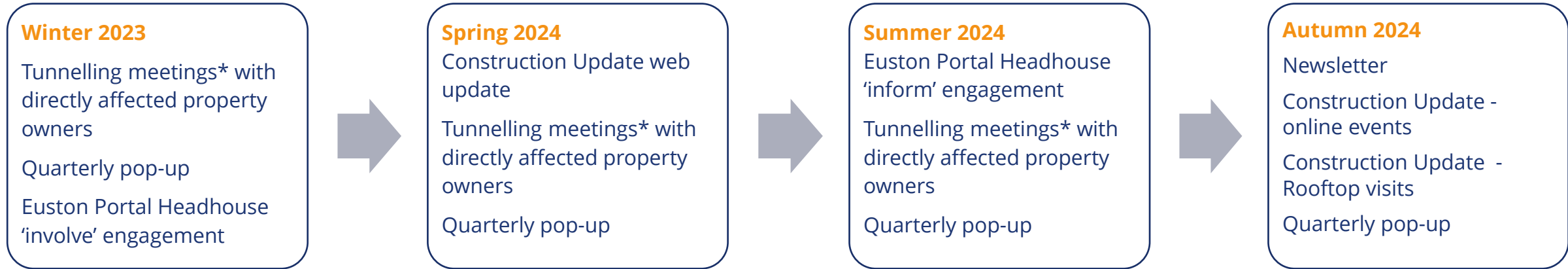
Proposed event location:

Stephenson House
Harrington Street
NW1 3SJ

Event date: 6 December (TBC)



Engagement – Autumn 2023 to Summer 2024



How we keep you up to date with our works



* Tunnelling to start in 2026

HS2

7. Actions Log

David Demolder

- To review the Actions Log noting
 - Updated responses
 - Items proposed to be closed

HS2

8. Community Questions/AOB

David Demolder

- Questions received in advance of the meeting
- Questions not related to agenda items
- Questions relating to agenda items not dealt with in the time allocated.

HS2

Meetings dates for 2024

Tuesday 19 March

Thursday 6 June

Tuesday 24 September

Thursday 28 November