

Contact our HS2 Helpdesk team on **08081 434 434**

HS2 Update

Aylesbury Area | January 2021

High Speed Two (HS2) is the new high speed railway for Britain. In response to COVID -19 we have worked hard to ensure that our working practices are fully aligned with the Site Operating Procedures produced by the Construction Leadership Council. These procedures have been endorsed by Public Health England. We will be keeping our local website www.hs2inbucksandox.co.uk up to date with information on our works in the local area.

Update on our main works

Our works are well underway in the Aylesbury area to set up construction compounds and some early construction works have started to prepare the area for the HS2 route.

Over the next couple of months, you can expect to see the following works in the local area;

- Ground Investigation (GI) works
- Utility works including trial holes
- Land survey works to measure land levels
- CCTV drainage works
- The set-up of works compounds off the A418 Oxford Road, A41 and Risborough Road
- Localised clearance of vegetation and fencing along the line of the route in the areas of the A418 and A41
- Tarmac work on the temporary A418 site entrance
- Haul road, access roads and drainage activities to commencing in January 2021
- Excavation, movement and storage of earthworks
- Several breaks from highway in the area to allow for our compound site access
- Some short duration traffic management and temporary footpath diversions to carry out some of the above activities



Join us online...

From February 2021 we will be holding **Virtual Surgery events** – contact the HS2 helpdesk to register your interest.

The virtual surgery will give you the opportunity to ask your questions to our engagement team about the HS2 works in your area.

Simply book your slot by emailing engagement@ekfb.com or contact the HS2 helpdesk



Upcoming works



Compound set-up (A418)

As part of our compound set-up preparatory works, we need to carry out land survey works and utility trial holes, and some tarmac work along the A418 Oxford Road through January.

Some of these works will need to be carried out on or adjacent to the carriageways in the area, therefore some short duration traffic management and temporary footpath diversions will need to be in place. We also expect to see the arrival of offices, cabins and storage facilities in mid-late January.



Batching plant (A41)

In February 2021 we expect to see the start of the batching plant equipment arrive in the compound adjacent to the A41. To prepare for this, work will start in January 2021 with localised site clearance and survey work around the compound with traffic management in place.

A batching plant is used to store, create and distribute concrete locally to the project, the benefit is that it takes additional HGVs off the road.



CCTV drainage survey works

Specialist cameras will be fed into the drainage system to search for potential problems within the drains. This will allow us to fix any problems now before larger issues occur. This activity is due to be conducted in the following locations, with traffic management in place and dates indicated (please note this is indicative and maybe subject to change).

- A418 – 25th January to 8th February
- Blackgrove Road – 8th February – 22nd February
- Risborough Road - 8th February – 22nd February.

Site clearance

In addition to what has already been disclosed there will be localised clearance of vegetation on Blackgrove Road from 22nd February, traffic management will be introduced for 7 days to complete this work safely.



Risborough road

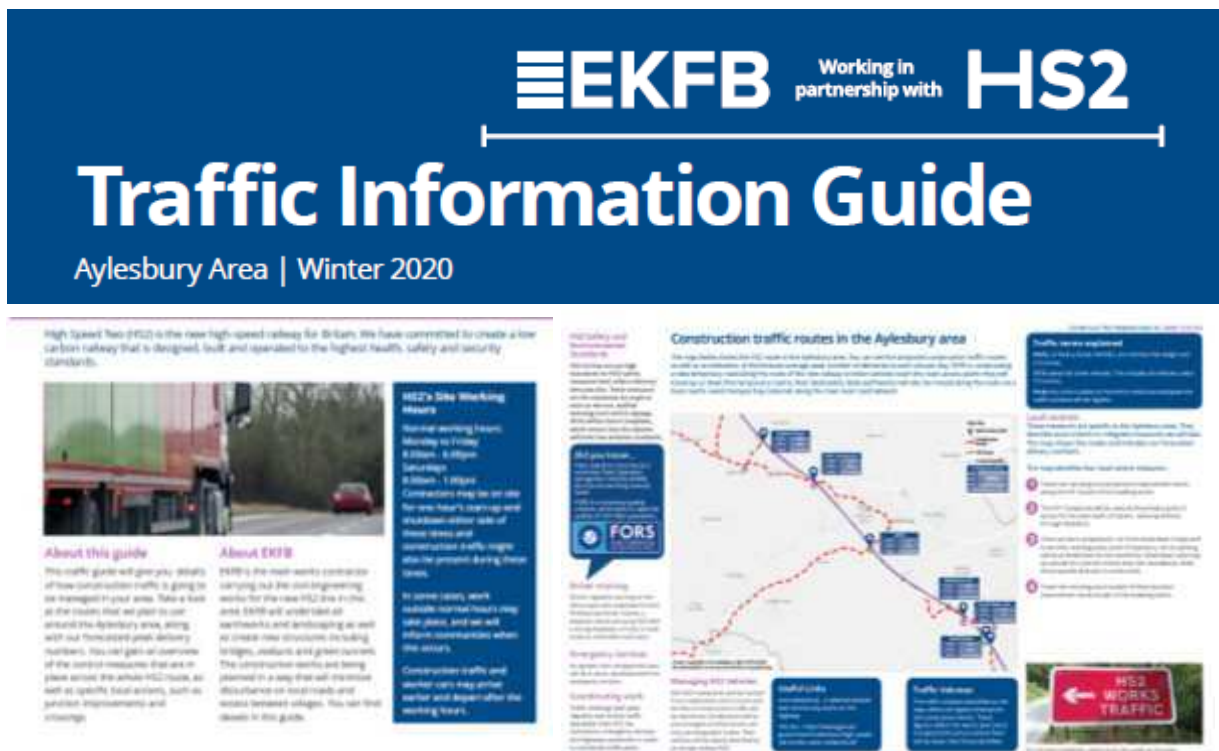
We will be starting to move into the Stoke Mandeville area from January with initial work for a temporary compound off Old Risborough Road and a break from highway off Risborough Road. The temporary compound set-up will require some car parking and welfare cabins.

In order to complete the break from highway there will be some localised vegetation clearance, top soil stripping and survey works, as well as a hardstanding area constructed. Temporary traffic management will be in place from January to allow our workforce to carry out the activities safely, where practical this will be operations between 9am and 3pm to avoid peak traffic times but please do allow extra time for planned journeys.

Traffic information guides

We have been listening to feedback from communities who want to know more about the construction traffic routes and predicted vehicle numbers. Subsequently we have now published traffic information guides on commonplace which will present our planned HGV routes and the estimated traffic flows relating to our works.

Remember to sign up to commonplace to read the online traffic guide or request a copy from the HS2 Helpdesk.



Above is the example layout of the traffic guide. We recommend printing in A3 for best quality.

If you have a question about HS2 or our works, please contact our HS2 Helpdesk team on 08081 434 434 or email hs2enquiries@hs2.org.uk

Keep up to date with our works

Commonplace Website

Our Commonplace website provides the most up to date information about our works in this area.

We would recommend subscribing to our news updates in the Bucks and Oxfordshire Area. You can do this in three easy steps:

1. Visit our Commonplace website – **www.hs2inbucksandoxfordshire.commonplace.is/**
2. Under 'Subscribe to news updates', enter your email address and click 'Get Project News'
3. Now you will get up to date information sent to your email address

On Commonplace you can also view more information on our proposed designs, community engagement documents as well as information on upcoming events in your area.

Welcome to HS2 in Buckinghamshire and Oxfordshire

High Speed Two (HS2) is the new high speed railway for Britain.

This website has information about what we are doing in Buckinghamshire and Oxfordshire, including notifications of our upcoming works, how it's being constructed and what we're doing to make it less disruptive.

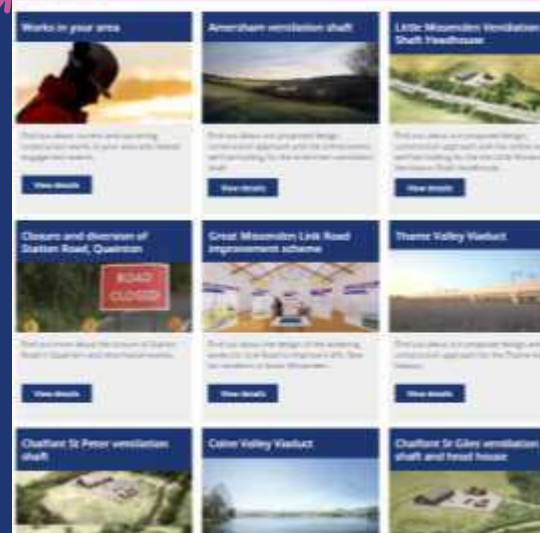
Contact us

More about HS2

Subscribe to news updates for HS2 in Bucks & Oxfordshire

Your email

Get project news



FAQ

Some of our most commonly asked questions in the Aylesbury area...

Q: When will work start on the Construction Access Road?

A: The construction access road will be used by our construction vehicles to travel up and down the line of route and will reduce the number of vehicles using the local road network. Work to construct the construction access road starts in January 2021

Q: I've spotted an HGV on my road... How can I identify whether this is a HS2 vehicle?

A: Where carrying out HS2-related activities, all EKFB construction vehicles over 3.5 tonnes regularly attending a worksite are required to display an HS2 sign in the front windscreen.

Q: How are you ensuring that roads remain mud and debris free?

A: We have a team of road sweepers on site that ensure that our main construction routes are kept tidy and safe. These routes are swept daily, between the hours of 08.00am and 18.00pm. We also have vehicle cleaners and wheel washers at our main construction sites.

Community Investment

Our main works contractors EKFB have been active in getting to know the local communities. They have participated in local charity walks, Dementia Friends training, donated items for local foodbanks and even held a fundraising day to raise money for Berryfields Parish Council who needed to buy 120 children pyjamas this Christmas.

EKFB are launching in January a volunteering Time Bank scheme where you can apply for the use of dedicated time from within the experienced team to provide practical support to communities. From litter picking and planting trees to help with social media or website support, there are many ways EKFB can help!

We are keen to support with volunteering and fundraising work for local charities. If you would like to know more then please contact the HS2 Helpdesk.



HS2 Funds for the Community

HS2 has two funds which are available to local communities to help with disruption that will be caused by the construction of Phase one of HS2 – **The Community and Environmental Fund (CEF)** and the **Business and Local Economy Fund (BLEF)**.

Community and business groups along the HS2 route have been awarded over £5million for projects since the funds began running since March 2017.

So far in the local area HS2 has provided funding to the Chilterns Conservation Board to help promote tourism in the area during the construction of the railway, as well as funding the installation of solar panels on the roof of the 1st Wendover Scouts Hut.

For more information on the funds available visit www.hs2funds.org.uk



Keeping you informed

We are committed to keeping you informed about work on HS2. This includes ensuring you know what to expect and when to expect it, as well as how we can help.

Residents' Charter and Commissioner

The Residents' Charter is our promise to communicate as clearly as we possibly can with people who live along or near the HS2 route.

www.gov.uk/government/publications/hs2-residents-charter

We also have an independent Residents' Commissioner whose job is to make sure we keep to the promises we make in the Charter and to keep it under constant review. Find reports at:

www.gov.uk/government/collections/hs2-ltd-residents-commissioner

You can contact the Commissioner at:
residentscommissioner@hs2.org.uk

Construction Commissioner

The Construction Commissioner's role is to mediate and monitor the way in which HS2 Ltd manages and responds to construction complaints. You can contact the Construction Commissioner by emailing:
complaints@hs2-cc.org.uk

Property and compensation

You can find out all about HS2 and properties along the line of route by visiting:

www.gov.uk/government/collections/hs2-property

Find out if you're eligible for compensation at:

www.gov.uk/claim-compensation-if-affected-by-hs2

Holding us to account

If you are unhappy for any reason you can make a complaint by contacting our HS2 Helpdesk team. For more details on our complaints process, please visit our website:

www.hs2.org.uk/how-to-complain

Contact Us

Contact our HS2 Helpdesk team all day, every day of the year on:

 Freephone **08081 434 434**

 Minicom **08081 456 472**

 Email **HS2enquiries@hs2.org.uk**

Write to:

FREEPOST
HS2 Community Engagement

Website **www.hs2.org.uk**

To keep up to date with what is happening in your local area, visit:
www.hs2inbucksandoxfordshire.commonplace.is

Please contact us if you'd like a free copy of this document in large print, Braille, audio or easy read. You can also contact us for help and information in a different language.

HS2 Ltd is committed to protecting personal information. If you wish to know more about how we use your personal information please see our Privacy Notice
<https://www.gov.uk/government/publications/high-speed-two-ltd-privacy-notice>

Reference number: 1MC12-EKF-IN-NTE-CS04-000006

High Speed Two (HS2) Limited, registered in England and Wales.

Registered office: Two Snowhill, Snow Hill Queensway, Birmingham B4 6GA.

Company registration number: 06791686. VAT registration number: 888 8512 56