

Contact our HS2 Helpdesk team on **08081 434 434**

HS2 Update

Aylesbury Area | February 2022

EKFB
Working in
partnership with **HS2**

High Speed Two (HS2) is the new high speed railway for Britain. Should you have any questions or enquiries regarding our works, please contact the Helpdesk details of which can be found in this newsletter. We will be keeping our local website www.hs2inbucksandbox.co.uk up to date with information on our works in the local area

What's inside the newsletter...

In this edition of the newsletter, we are looking at what is to come for 2023.

- Community projects update.
- What's happening in your area.
- Forward look for 2023
- Quainton Railhead update
- Spotlight: Princess Risborough to Aylesbury Line works
- A41 workers accommodation compound update
- Open Doors 2023
- Mitigation Sites
- Map of the HS2 works in Aylesbury



Join us for our next drop in events:

- Tuesday 7th February - Stone.
- Tuesday 21st March - Waddesdon
- Tuesday 11 April - Coldharbour

We will be discussing upcoming works including:

- A418 Realignment
- A41 Realignment
- PRA works.
- Utility works
- Traffic Management

What's happening in your area?

Updates of works from January – March 2023

Over the next few months, you can expect:

- Thame Valley Viaduct (TVV) piling complete
- Start of the Pier manufacture for TVV
- PRA Overbridge Deck and underpass progression
- Utilities works across the Aylesbury area
- A418 tie-in commences, and overbridge works continuing
- 1000,000 tonnes imported via the Quainton Railhead
- Bicester Road Embankment commencing
- Abnormal load deliveries and trial deliveries for the A41 and A418 overbridges



Take a look at our drone footage...

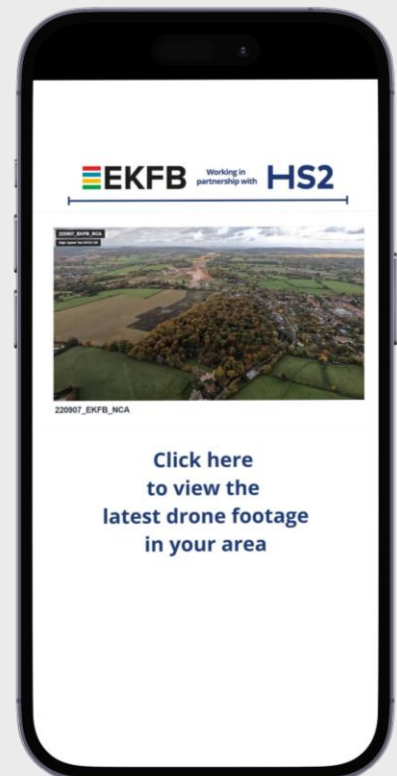
One of the best ways to see the progress we are making on site is from our new drone footage. If you scan the QR code on your phone below, it will allow you to view our latest drone footage of HS2 works in your area.

The footage gives an annotated overview of where different structures will be found once HS2 is complete along with an update of how the landscaping is currently looking.



Click here, scan me or follow the link!

www.bit.ly/Aylesburydronefootage



Community Projects

Booker Park School New Forest Playground

Our latest community project for Aylesbury saw us up-cycling and using natural materials to help enhance the schools playground space.

Working with the teachers at Booker Park School, we successfully created an outdoor multi-sensory learning area, with the aim of improving the concentration and stimulation of the pupils.

Repair of PACE Car Park

In 2022, EKFB and members of O'Connells spent several days repairing the car park of the PACE Centre.

The PACE Centre is a charity and special school based in Aylesbury.

The team helped level out the carpark to make it easier and safer for students and staff to use on their journey to school.

Bernie's Buddies

This winter, EKFB donated £500 worth of hot meal vouchers to Bernie's Buddies Over 65s Club.

The team also supported Bernwode Bus Christmas Drive through Quainton village collecting donations for the local foodbanks.

Christmas Toy Collection

Throughout December our team donated new toys for a collection we organised for Stoke Mandeville Children's Ward and Aylesbury Women's Aid.

The collection consisted of approximately 300 toys for all age groups. Our headed over to the hospital and refuge to drop the presents off on Wednesday 21 December, they were delighted with the donations which were valued at around £1,500!



The teams involved in the local community projects.



Did you know...

Over **2100+** volunteering hours have been delivered in the past **12 months** on **42 community investment projects!**

First Train Pulls into Quainton

Railhead

In winter 2022, the first freight train arrived at Quainton Railhead near Aylesbury which is expected to take the equivalent of 300,000 lorry movements off local roads between now and 2025.

Situated on an existing freight line north of Aylesbury, the new railhead will welcome approx. 1,800 freight trains over the next three years, delivering an expected 3 million tonnes of materials.

Delivering this material by rail instead of HGV is expected to save 27,903 tCO₂e (tonnes of carbon), the equivalent of 126 million miles driven by an average petrol car - or 156,408 return journeys between London and Edinburgh.

In the past two years we have been delivering construction material to other Buckinghamshire sites by rail.

In that time 655 trains have delivered 1.1 million tonnes of aggregate, removing more than 116,000 truck journeys from the road, and saving an estimated 13,000 tonnes co₂e.

Once on site, most of the material will be stockpiled before being moved up or down the trace of the new high-speed via our haul roads to keep it away from local road users.



EKFB and our supply chain partners, Fishbone Solutions, DB Cargo and Hanson, are extremely proud to be introducing our fourth railhead into the project and in less than two years. Our local communities are important to us and the railhead allows us to transport material efficiently, with minimal distribution to those living close to our construction works

- **EKFB's Head of Logistics & Security Chris Barton**



Local councillors and EKFB with the first delivery train at the Railhead.

A Look Forward to 2023

Abnormal Loads

We will be continuing to receive deliveries of abnormal loads to our sites.



For the safety of road users and our staff, these abnormal loads require temporary traffic management in the form of a lane closure to provide enough space for the vehicles to safely turn into our construction sites.

We completed a trial run for the A41 overbridge, deliveries will be continuing over the next few months.

We will also be conducting a trial run for the A418 overbridge deliveries, to check and ensure the route to site is the most effective.

Thank you for your co-operation and we apologise in advance for any inconvenience.

Utility works

Our main utility work currently is along the Princes Risborough to Aylesbury Line (PRA) ahead of the blockade period later in the year.

The team will be using an auger bore to push the utilities under the existing PRA line a protective sleeve which encloses them to protect them from further works.

In Spring 2023, along the A418 we will need to remove a further section of the Hartwell House wall so we can conduct some utility works and create an access track.

For the safety of road users and our staff, these works may require temporary traffic management in the form of a lane closure.

A418 Realignment

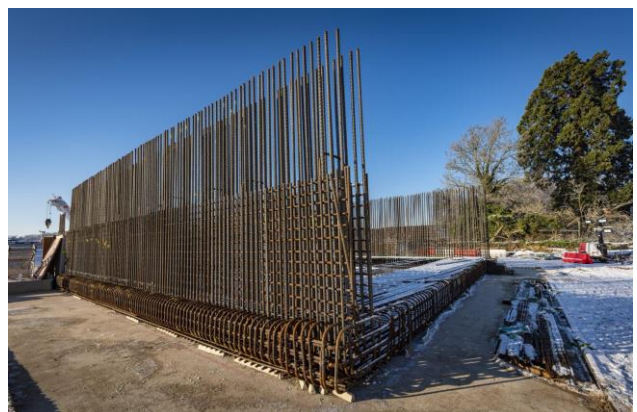
The new A418 realignment is expected to be operational in Winter 2023 and will eventually carry traffic over the HS2 rail line.

The team are currently working on the overbridge structure and will be creating the realignment 'offline' which means within our site area. There will be some overnight closures required to tie in the new road later in the year.

Also in this location, we are conducting traffic modelling with the view to install traffic lights to facilitate a right turnout of the new compound entrance. We have more of an indication on the details in the coming months.



The A418 overbridge progression



A418 wing wall progression

A Look Forward to 2023

Thame Valley Viaduct

Piling works for the Thame Valley Viaduct will be continuing until Summer 2023. We will also conduct reinforced concrete works for this structure during this time. We will then be moving onto installing the piers and decking for the viaduct, this work should start in Spring next year and continue until Autumn 2024.

A41 Realignment

There will be some changes to the road layout on the A41. We are conducting the permanent realignment of the A41 in two phases. The first phase of the A41 realignment will be completed in Autumn; the second phase will be completed by early 2024.

Most of the work will be completed offline to reduce the amount of disruption to local traffic and access via the A41 will be maintained. However, there will be a few closures to tie in the old road with the new.

Stoke Mandeville Relief Road

In Summer 2023, we will be creating a bailey bridge which that will allow our construction and site traffic to travel over Risborough Road helping reduce our impact on the local area while we construct the relief road.

Until this is in place there will be a crossing point across Risborough Road connecting our sites.

Earthworks for the relief road will begin in Spring 2023 and will include the creation of embankments, landscape bunds and the movement of material.

Once the Stoke Mandeville Relief Road is operational, the A4010 Risborough Road will close and become a pedestrian underpass.

All vehicle access will be via the new relief road.

Work on the underpass will be starting this year by conducting sheet piling to reinforce the area.

The underpass will not be operational until the relief road is in place in 2024.



An artistic impression of the Thame Valley Viaduct.



The existing PRA in front of the Stoke Mandeville relief road.



Spotlight: Princes Risborough to Aylesbury Railway update

The overbridge is the biggest structure on the PRA realignment. The deck is the top surface of the bridge, which will carry trains between Princes Risborough and Aylesbury over HS2. Because of the size, which is 100m long and 10m wide, we used 2 concrete pumps working from each side to pour around 250m³ of concrete.

Work is also continuing on the PRA Underpass, where we are completing the concrete walls for the structure, and sheet piling, excavation, and installation of the PRA Culvert are also continuing. These works will require some night and weekend working, especially as they are so close to the existing railway.

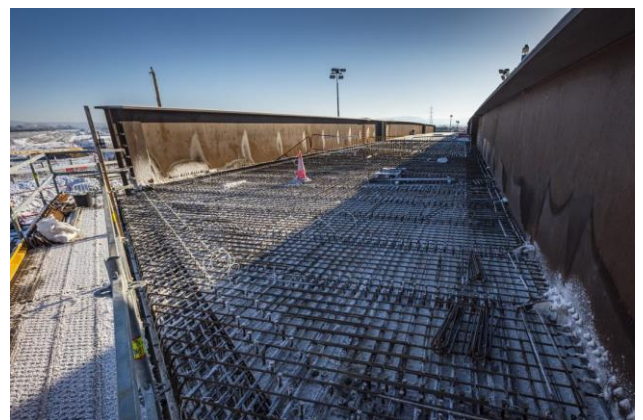
The PRA realignment earthworks will continue through to the end of the blockade later in the year.



The PRA work site.

The realignment is due to be brought into use after a 'blockade' period, where the line is stopped and a period of 24hr working takes place which allows the live railway to switch from the existing line onto the new, this will include some earthworks activities, and installation of ballast and rail systems.

The blockade will be in place for approximately 10 weeks. We have been in communication with the nearby school to reduce our impact on them. As a result, we amended our construction programme so that our works take place outside of school hours. When school is not in session, we will be working 24-hours a day. During this time, Marsh Lane crossing will also be closed and will likely remain as such Network Rail completes their required upgrade works.



The PRA Overbridge, where the deck will be taking place.



Open Doors 2023

HS2 has partnered with Build UK, to support the 'Open Doors 2023' programme which runs from Monday 13 - Saturday 18 March 2023.

Across the EKFB 80km stretch, we are offering a range of activities to give young people and career changers an opportunity to see behind the hoardings and consider a career in construction.

Activities will include:

- Site visits to the Wendover Dean Viaduct launch compound.
- Experience the immersive ELITE training programme.
- A visit an ecology mitigation site in Aylesbury; and
- A 'Site safari' bus tour of the internal access road in Calvert

Sounds interesting?

If you would like to register to be a part of Open Doors 2023, sign up today at www.opendoors.construction

Rebecca Young, HS2's Skills and Employment Supply Chain Manager said "For those interested in a career in construction, this is a great opportunity to meet the people building our new stations, viaducts and tunnels. With over 900 apprentices already on board and plans to recruit hundreds more in the months and years ahead, we hope to inspire the next generation to play a part in future phases of HS2."



A41 Workers Accommodation

We are currently working on submitting the Schedule 17 plans for the worker's accommodation addition in our A41 compound.

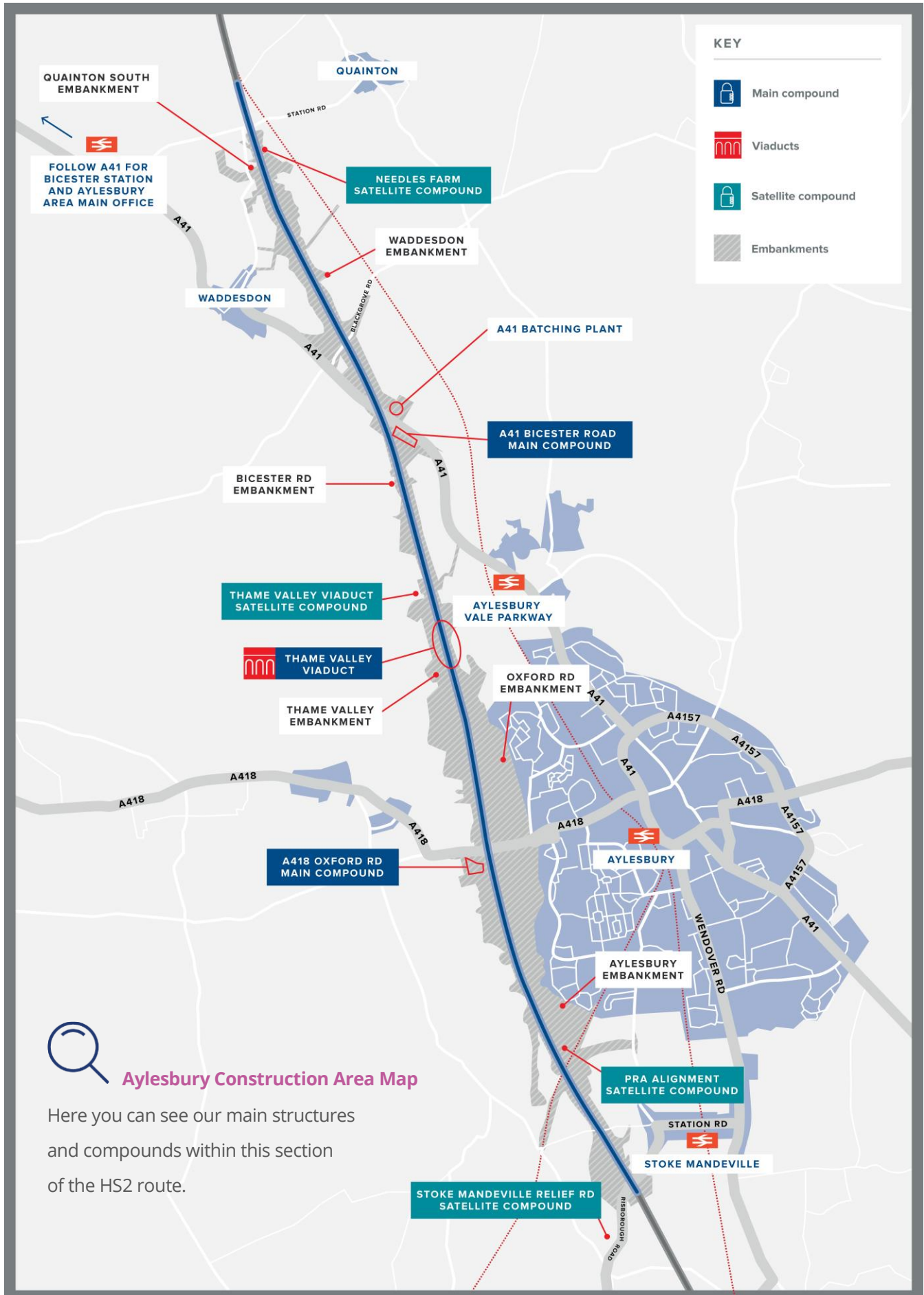
As the safety and well-being of our staff is a top priority, the overnight and daytime welfare and accommodation will be for workers associated with the construction activities in support of HS2. The Lighting will be managed in accordance with the class approval and code of construction practice; therefore, this is not expected to disrupt nearby residents, road users or wildlife and is subject to consent.

Workers will have to sign and agree to terms and conditions before occupying the accommodation. There will also be site specific inductions identifying local requirements and reiterating the message regarding noise and interactions with the local community.

The accommodation itself will be two storeys and coloured moorland grey and will be similar to what is already existing on site currently.

The existing A41 compound buildings





Keeping you informed

We are committed to keeping you informed about work on HS2. This includes ensuring you know what to expect and when to expect it, as well as how we can help you.

The Residents' Commissioner

The independent Residents' Commissioner oversees and monitors our commitments to you.

The commissioner's reports and our responses can be found at www.gov.uk/government/collections/hs2-ltd-residents-commissioner

The Residents' Commissioner makes sure we fulfil the commitments in the HS2 Community Engagement Strategy (<https://bit.ly/3oOA25j>).

The Residents' Commissioner can be contacted on: residentscommissioner@hs2.org.uk

Construction Commissioner

The independent Construction Commissioner regularly meets our Chief Executive Officer to raise any concerns or emerging trends across HS2.

The Construction Commissioner's role has been developed to monitor the way we manage and respond to construction complaints.

The commissioner mediates on disputes about construction, involving individuals and organisations, that we can't resolve. The commissioner advises members of the public about how to make a complaint about construction.

The Construction Commissioner can be contacted on: complaints@hs2-cc.org.uk

Property and compensation

You can find out about HS2 and properties along the route by visiting:

www.gov.uk/government/collections/hs2-property

Find out if you can claim compensation at:

www.gov.uk/claim-compensation-if-affected-by-hs2

Holding us to account


If you are unhappy for any reason you can make a complaint by contacting the HS2 Helpdesk. For more details on our complaints process, please visit:

www.hs2.org.uk/in-your-area/contact-us/how-to-complain/

Contact us

Contact our HS2 Helpdesk team all day, every day of the year on:

 Freephone **08081 434 434**

 Minicom **08081 456 472**

 Email **HS2enquiries@hs2.org.uk**

Write to:

FREEPOST

HS2 Community Engagement

Website **www.hs2.org.uk**

To keep up to date with what is happening in your local area, visit: **www.HS2inyourarea.co.uk**

Please contact us if you'd like a free copy of this document in large print, Braille, audio or 'easy read' format. You can also contact us for help and information in a different language.

HS2 Ltd is committed to protecting personal information. If you wish to know more about how we use your personal information please see our Privacy Notice: <https://www.gov.uk/government/publications/high-speed-two-ltd-privacy-notice>

Reference number: 1MC12-EKF-CO-NTE-CS04-000018 | HS2-EW-EK-Ph1-Ar-No-N1-CR-33-02/09/2023

High Speed Two (HS2) Limited, registered in England and Wales.

Registered office: Two Snowhill, Snow Hill Queensway, Birmingham B4 6GA.

Company registration number: 06791686. VAT registration number: 888 8512 56