

Contact our HS2 Helpdesk team on **08081 434 434**

Balfour Beatty **VINCI** 

Working in
partnership with

HS2

HS2 Update

Warwickshire | Stoneleigh, Ashow, Kenilworth and Burton Green | Autumn 2023

High Speed Two (HS2) is the new high speed railway for Britain. This update provides information about the upcoming work on Phase One of the railway in Warwickshire.

Building Ashow Road Overbridge

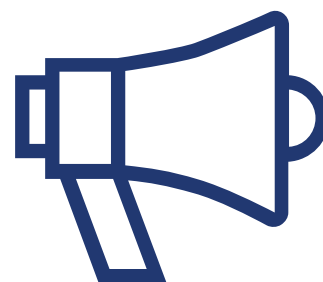
We are progressing well with works on the Ashow Road Overbridge. The new bridge will carry the B4114 Ashow Road over the HS2 high-speed rail line.

The structure is a reinforced concrete bridge. We have cast the piers, the concrete columns that will support the bridge, onsite. We began work at the end of 2022, completing the pier walls in early this year and installing the first bridge beams, the structures that enable us to build the bridge deck in summer 2023. Our team worked incredibly fast to install all 24 beams within a week and we have since poured the concrete to build the bridge deck. Our next steps involve tying in in the existing B4115 Ashow Road with the realigned road and bridge. We will update you about this before we start work.

As a result of building the bridge on our site and away from the live road network, we significantly reduced the traffic management associated with the project. This is a strategy that you will see deployed elsewhere on the HS2 project to ensure that we minimise disruption for local people wherever possible.



The overbridge will allow cars to travel over the new HS2 line



Upcoming events

You can find out more about our drop-in events [here](#) or by scanning the QR code.



Keep up to date with our employment opportunities [here](#) or scan the QR code.



Read about our upcoming works [here](#) or scan the QR code.



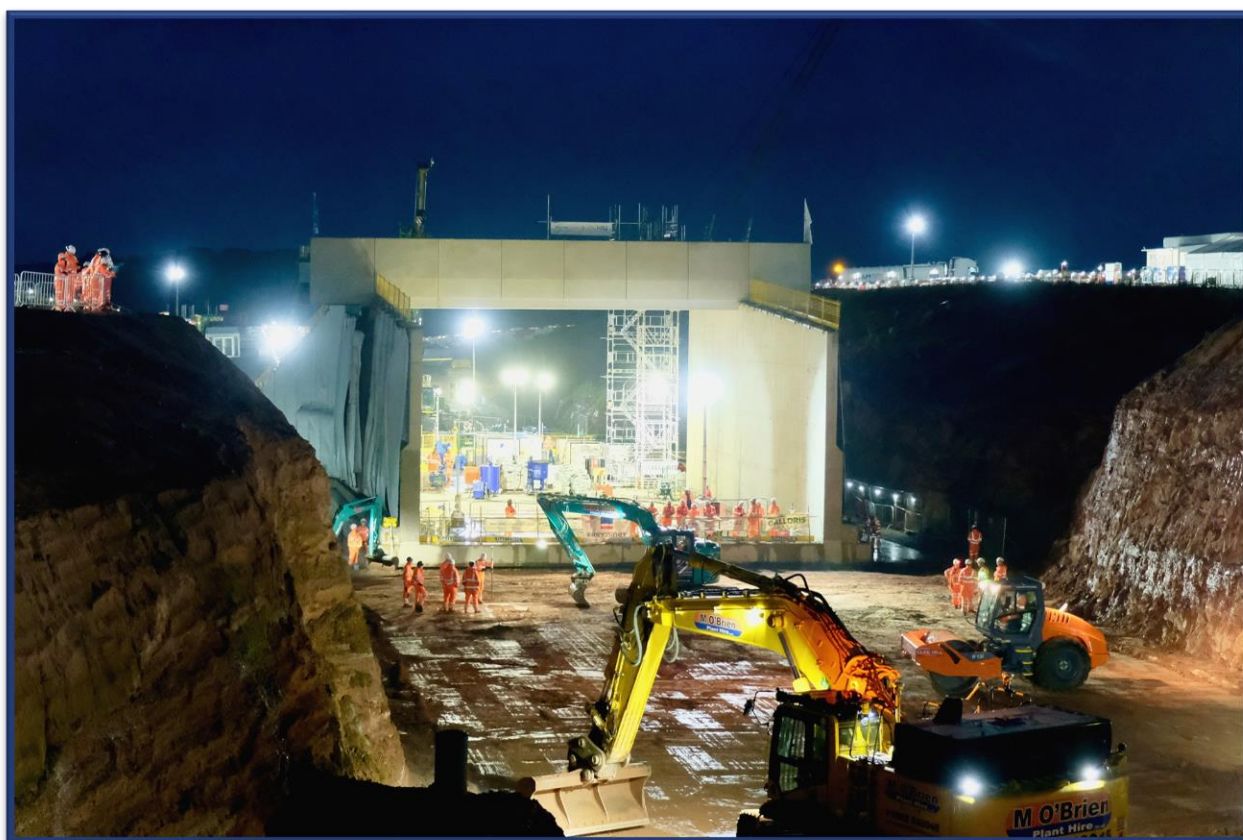


Construction Spotlight: HS2 delivers Coventry to Leamington Rail Bridge

A team of 250 people have worked around the clock to move HS2's huge 5,600 tonne bridge into place under the Coventry to Leamington Spa railway. The operation to slide the 22 metres long and 11 metres wide bridge into position took 5.5 hours and was completed 27 hours ahead of schedule.

From the start of the blockade on Saturday 29 July, 113 metres of the existing rail track and 188 rail sleepers were removed by the team, then 15,000 cubic metres of ground including hard sandstone material was excavated to create the space for the bridge to be moved into.

The structure will allow the high speed railway to pass underneath the existing Coventry to Leamington Spa line. In the short term it will also allow construction traffic to pass under this line, reducing the number of lorries on the public highways. The structure also features an adjoining access bridge for a nearby farmer, which will start construction shortly.



HS2's 5,600 tonne bridge will carry high speed trains under the Coventry to Leamington Spa railway

Did you know?

A blockade refers to the defined time we have when the railway Line is available for us to undertake our works. We work closely with Network Rail to reduce the impact on passengers as much as possible.



Progressing BBV A46 Main Compound extension

We are delighted to confirm that the temporary BBV A46 Main Compound extension planning application has now been submitted and will now go to Planning Committee. Subject to approval, the construction of the compound will begin later this year and it will be operational until 2028, before the site is reinstated to its current, agricultural use, in 2030.

Throughout the works, we will be using our new site access off Stoneleigh Road meaning that our Large Good Vehicles (LGVs) will not be using the B4115 (Ashow Road, CV8 2AU) while maintaining our community benefits. We will be reducing traffic disruption as much as possible by streamlining our construction vehicle movements and importantly, boosting biodiversity by seeding wildflowers.



Planting wildflowers to boost biodiversity as part of extension works to the A46 Main Compound



St. Barnabas Church community event

Local residents were invited to a drop-in event at St. Barnabas Church to understand how the project is progressing as well as being informed about upcoming traffic management and environment issues.

44 attendees came along and feedback indicated that the event was well-received. It provided a valuable networking opportunity to support local community projects. This included a local church group who wanted us to help with their outdoor garden.

Given the success of the event, we will be holding similar events in the future.

You can find out more about upcoming events by [clicking here](#) or scanning this QR code.





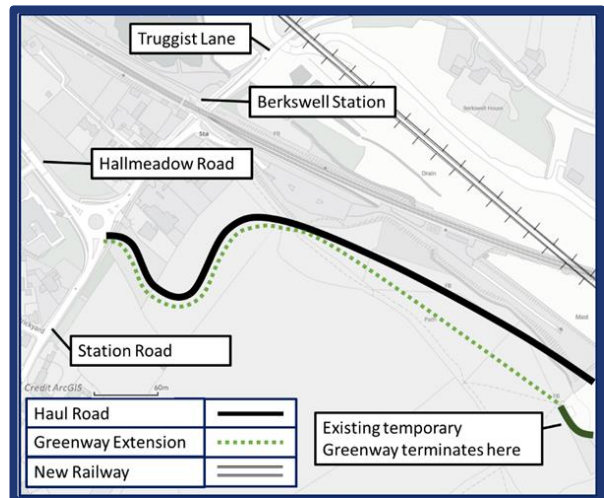
Focus: Extending the Kenilworth Greenway



An artist's impression of the completed Kenilworth Greenway

To improve local active travel connections, we are extending the temporary Kenilworth Greenway to Station Road on the south-eastern side of the existing railway line, and are considering a further extension towards Lavender Hall. We are also considering options for cycle and bridleway extensions in order to further support local active travel.

This summer, we also ensured that access to the Kenilworth Greenway was enhanced, by announcing a new temporary link to the Greenway from the Hallmeadow Road roundabout, as we are aware that the existing access has been flooded and largely unpassable for many years.



New temporary footpath next to the haul road that connects Station Road to the temporary Greenway



"Thank you for organising the stones to be placed in the muddy pool at the end of the temporary Greenway. Please thank your construction manager for doing it. I have posted a note on the main Balsall Common Facebook page giving credit and thanks to BBV."

Cllr Andrew Burrow

Dalehouse Lane Overbridge

We are planning to build an overbridge that will bring Dalehouse Lane over the new HS2 railway track. We will initially be carrying out utility diversions, realigning the current road and constructing the retaining walls and embankments. To do this, we are closing Dalehouse Lane in two phases this year, with Phase 1 already completed and Phase 2 running from 6 November to 1 December. The work will be completed under a full road closure, and we will be monitoring the impacts of the diversion and using the data to inform our strategy from 2024 to 2026. Click [here](#) for more information, or scan the QR code.



Works ongoing at Dalehouse Lane

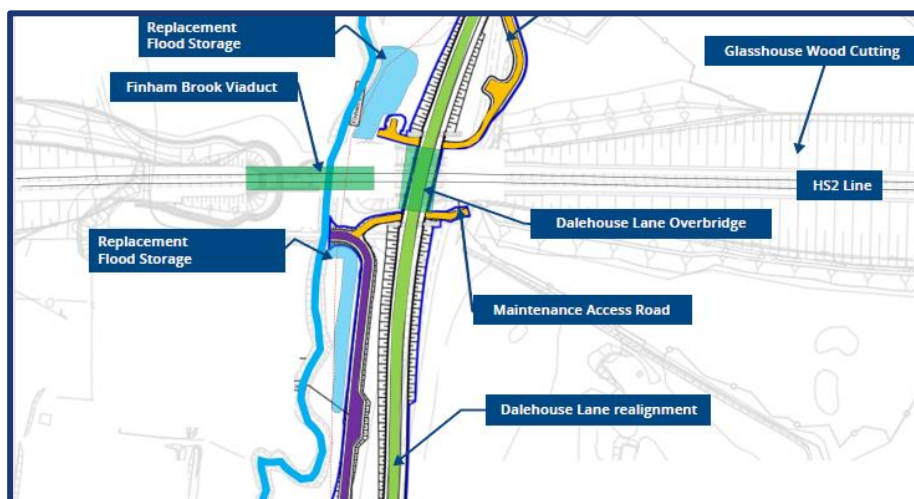
We recently held a drop-in event in September 2023 to inform the local community about our plans to build the bridge and its associated impacts from 2024 to 2026. This includes the need to realign the current road to enable us to build the bridge.

We are planning to complete our work in two more phases in

addition to those outlined above. There may be a requirement for short-term traffic management between the phases, which we will communicate in advance. The main phases of our work are as follows:

- **Phase Three: Summer 2024 to Spring 2025 road closure mitigation measures**
- **Phase Four: Spring 2025 14-month full closure**

Please click [here](#) or scan the QR code to find out more about our plans in the drop-down menu on the webpage and download a copy of our public event information boards.



Indicative site layout plan for the Dalehouse Lane Overbridge

HS2 funds for the community

We are offering two funds that are available to local communities and businesses between the West Midlands and London, to help with the disruption caused by our construction work. These are the Community and Environment Fund (CEF) and the Business and Local Economy Fund (BLEF).

Our community investment strategy is designed to give communities the opportunity to share in the benefits of HS2. The CEF is an allocated fund that communities can apply for, to help to support local projects that aim to improve their local area.

The BLEF is designed so that we can support local economies that may be disrupted by the construction of HS2. BLEF grants are for local business support organisations and local authorities to help maintain business activity in local communities. For more information about each of these funds, including how to apply, please click [here](#) or scan the QR code to the right.



Community investment

BBV's Community Investment programme enables us to support those communities most impacted by our works. BBV and our supply chain partners can give back by volunteering our time, providing resources and sharing our knowledge and skills. Please contact us at **communityinvestment@balfourbeattyvinci.com** to request support.

Upcycling waste wooden pallets

We have been working closely with community groups and schools locally to see where we can help out.

We proudly donated 40 bird boxes made from waste wooden pallets to the Cubbington Church of England School to sell and use at their school fete.

In terms of other resources, we donated magazines worth £120 to St Mary's allotment library and supported both the Burton Green village hall and the Balsall Common Lions in holding events by donating barriers and traffic cones to help with crowd management.



The BBV team donating our bird boxes

Donating wooden pallets to Westwood Heath Allotment

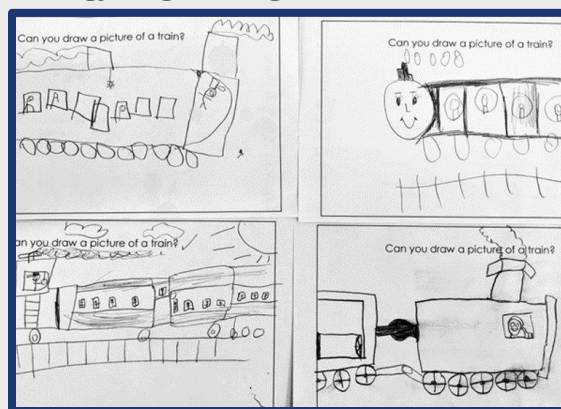
In March, we donated 100 wooden pallets to Westwood Heath Allotment, a facility that we know has been used for years by residents from Westwood Heath Lane and Burton Green.

The allotment upcycled the pallets into compost bins and raised vegetable beds, reaffirming our commitment to environmental and sustainable benefits for local communities. This is only the beginning of a longer-term relationship, and we will be working to support the allotment further into the future with more resources.

Harbury Primary School

Part of our school engagement and STEM (Science, Technology, Engineering, and Mathematics) work in local communities, a session was carried out with year 5 students from Harbury Church of England Primary School.

Students were shown how the Tunnel Boring Machine (TBM) works and were fortunate enough to be amongst the last visitors to see the TBM before its decommissioning. As a way of thanks, the year 5 students shared their train drawings with our engagement team and the students were provided with some goody bags to take home.



The students drew great some pictures

Careers - It's a result!

Three Walsall College T-Level students who completed a 45 day industry placement with BBV have secured the results they needed in their Construction - Design, Surveying and Planning T-Level. The new recruits will now progress straight into an apprenticeship role and will join BBV's engineering team in South Warwickshire, which is tasked with delivering a series of bridges and viaducts across a 12.5km section of the new railway. This includes viaducts that span the River Leam, River Avon, Finham Brook and the Grand Union Canal embankment.



"I'm really excited to take the next step in my career and begin my degree-level apprenticeship with Balfour Beatty VINCI. For a Civil Engineer based in the West Midlands, working on HS2 is a once-in-a-lifetime opportunity and the perfect reward for all the hard work I put in during my T Level studies."

18-year-old Charlotte from Sutton Coldfield

Keeping you informed

We are committed to keeping you informed about work on HS2. This includes ensuring you know what to expect and when to expect it, as well as how we can help you.

The Residents' Commissioner

The independent Residents' Commissioner oversees and monitors our commitments to you.

The commissioner's reports and our responses can be found at www.gov.uk/government/collections/hs2-ltd-residents-commissioner

The Residents' Commissioner makes sure we fulfil the commitments in the HS2 Community Engagement Strategy (<https://bit.ly/3oOA25j>).

The Residents' Commissioner can be contacted on: residentscommissioner@hs2.org.uk

Construction Commissioner

The independent Construction Commissioner regularly meets our Chief Executive Officer to raise any concerns or emerging trends across HS2.

The Construction Commissioner's role has been developed to monitor the way we manage and respond to construction complaints.

The commissioner mediates on disputes about construction, involving individuals and organisations, that we can't resolve. The commissioner advises members of the public about how to make a complaint about construction.

The Construction Commissioner can be contacted on: complaints@hs2-cc.org.uk

Property and compensation

You can find out about HS2 and properties along the route by visiting:

www.gov.uk/government/collections/hs2-property

Find out if you can claim compensation at:

www.gov.uk/claim-compensation-if-affected-by-hs2

Holding us to account


If you are unhappy for any reason you can make a complaint by contacting the HS2 Helpdesk. For more details on our complaints process, please visit:

www.hs2.org.uk/in-your-area/contact-us/how-to-complain/

Contact us

Contact our HS2 Helpdesk team all day, every day of the year on:

 Freephone **08081 434 434**

 Minicom **08081 456 472**

 Email **HS2enquiries@hs2.org.uk**

Write to:

FREEPOST

HS2 Community Engagement

Website **www.hs2.org.uk**

To keep up to date with what is happening in your local area, visit: **www.HS2inyourarea.co.uk**

Please contact us if you'd like a free copy of this document in large print, Braille, audio or 'easy read' format. You can also contact us for help and information in a different language.

HS2 Ltd is committed to protecting personal information. If you wish to know more about how we use your personal information please see our Privacy Notice: <https://www.gov.uk/government/publications/high-speed-two-ltd-privacy-notice>

Reference number: HS2-MW-BBV-Ph1-Ar-No-N1-CR-23-16/08/2023

High Speed Two (HS2) Limited, registered in England and Wales.

Registered office: Two Snowhill, Snow Hill Queensway, Birmingham B4 6GA.

Company registration number: 06791686. VAT registration number: 888 8512 56