

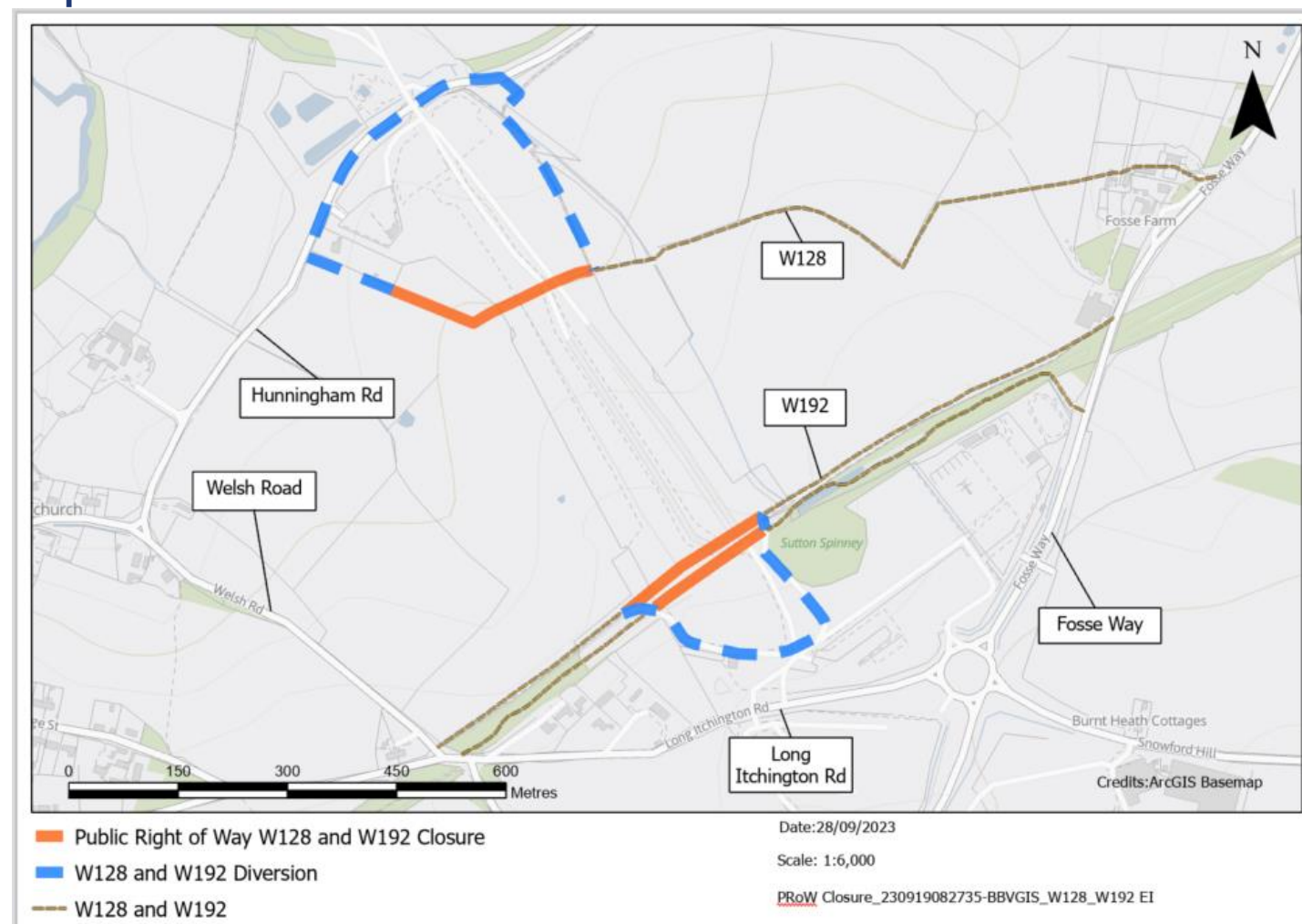
# Notice of Public Right of Way (PRoW) diversion W128, Offchurch

High Speed Two (HS2) is the high-speed railway for Britain. Balfour Beatty Vinci (BBV) is working in partnership HS2 Ltd to build the new railway in your area.

We will be temporarily diverting the W128 to support construction of a platform. The diversion will be in place from **Thursday 8 July 2021 until Monday 6 June 2025**.

Pedestrians will still be able to safely navigate through the area by using the clearly signposted diverted footpath as illustrated in the map below.

## Map



The timeframes in this notification may be subject to change. For the latest information, please refer to [www.hs2inwarwickshire.co.uk](http://www.hs2inwarwickshire.co.uk). We thank you for your patience. If you have a question about HS2 or our works, please contact our HS2 Helpdesk team on **08081 434 434** or email [hs2enquiries@hs2.org.uk](mailto:hs2enquiries@hs2.org.uk)

Reference number: HS2-MW-BBV-Ph1-Ar-No-N1-Traf-09-06/10/2022

High Speed Two (HS2) is the new high speed railway for Britain. [www.hs2.org.uk](http://www.hs2.org.uk)

