



Notice of Lane and Road Closures - Nash Lee Road

November 2023 | www.hs2.org.uk

High Speed Two (HS2) is the new high speed railway for Britain. If you have any questions or enquiries about our work, please contact our Helpdesk to find out more. You can sign up for regular updates in your local area at www.hs2inyourarea.co.uk.

What are we doing?

The temporary realignment of Nash Lee Road was opened for public use in June of this year. The new road incorporates a temporary bridge carrying road traffic. Now that the bridge has been in operation for nearly five months, we need to undertake routine maintenance to ensure functionality is maintained.

To carry out these maintenance works we will be closing the road overnight. By doing this we can reduce the impact on road users while the maintenance is being undertaken. Further maintenance works will be conducted periodically until the permanent alignment is constructed.

We will also be undertaking some clearance works in the same location on Nash Lee Road. These works will be undertaken during the day under lane closures with two-way traffic lights in operation.

When will these works take place?

Daytime lane closures with two-way traffic lights:

- Monday 13 November to Wednesday 15 November

Overnight road closure (8.30pm – 5.30am):

- Monday 20 November to Saturday 25 November

These dates are subject to change due to circumstances beyond our control. Please check the HS2 website for any changes. Should we finish the works early, the traffic management will be withdrawn.

If you have a question about HS2 or our works, please contact our HS2 Helpdesk team on 08081 434 434 or email hs2enquiries@hs2.org.uk

Duration of works

Day time lane closures will operate from:

Monday 13 November – Wednesday 15 November

Overnight road closures (8.30pm – 5.30am) will operate from:

Monday 20 November to Saturday 25 November

What to expect

Varied activities with both quiet and busier periods.

Daytime lane closures with two-way traffic lights.

Road closure on Nash Lee Road with a fully signed posted diversion route in operation.

What we will do

Manage any environmental impacts, such as traffic and noise.

Respond promptly to any complaints and take appropriate action.

Take care to respect the community.

Notice of Lane and Road Closures – Nash Lee Road



Where will the closures be?

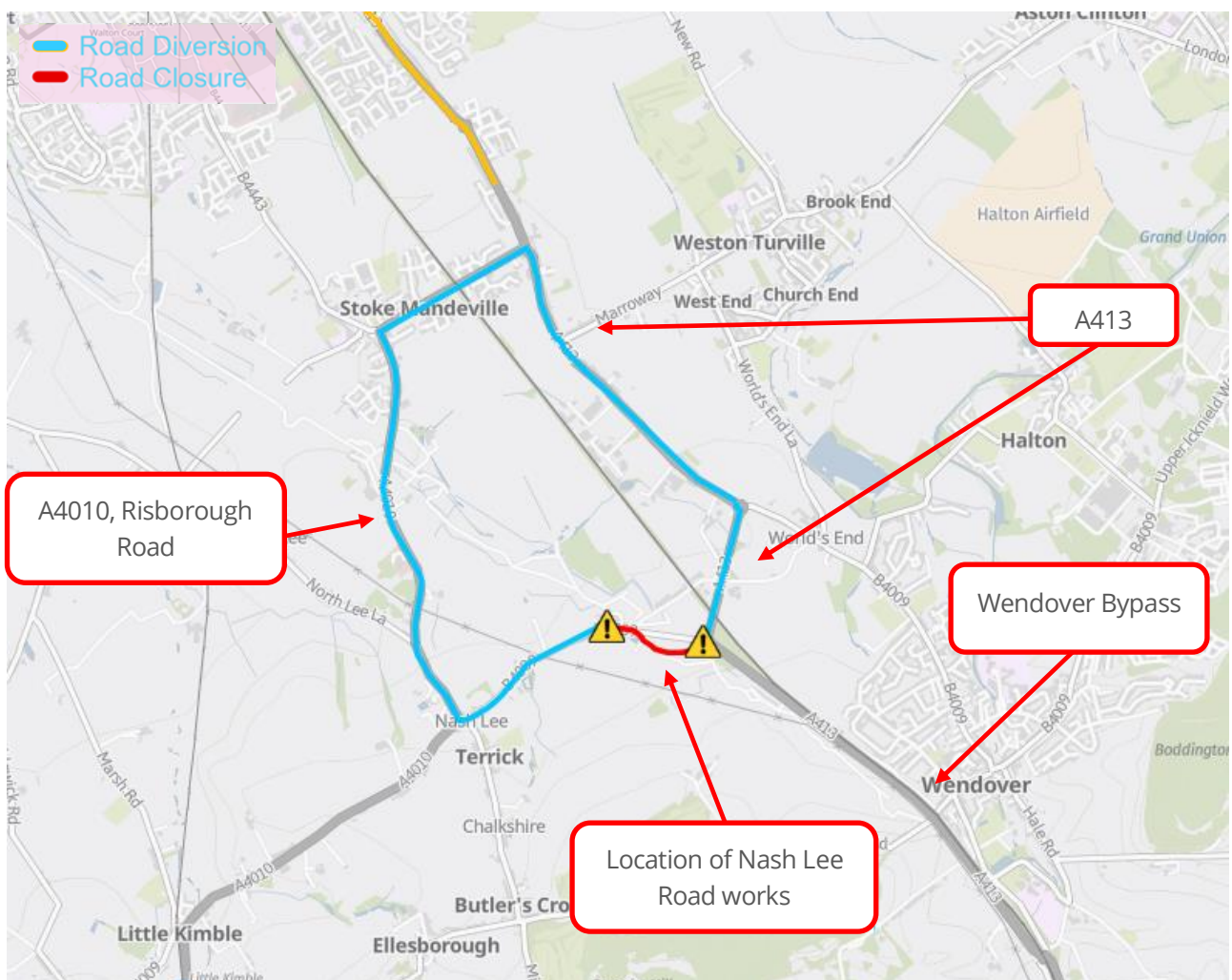
The map below shows the location of the traffic management that will be in place on Nash Lee Road.

The lane closures will operate from Monday 13 November to Wednesday 15 November.

The road closure will operate in the same location on the map below.

The closures will be introduced overnight and will operate between 8.30pm and 5.30am from Monday 20 November to Saturday 25 November, the road will be fully open during the day.

During the closures a fully signposted diversion route through Stoke Mandeville will be in operation.



Notice of Lane and Road Closures – Nash Lee Road



What will the permanent alignment of Nash Lee Road look like?

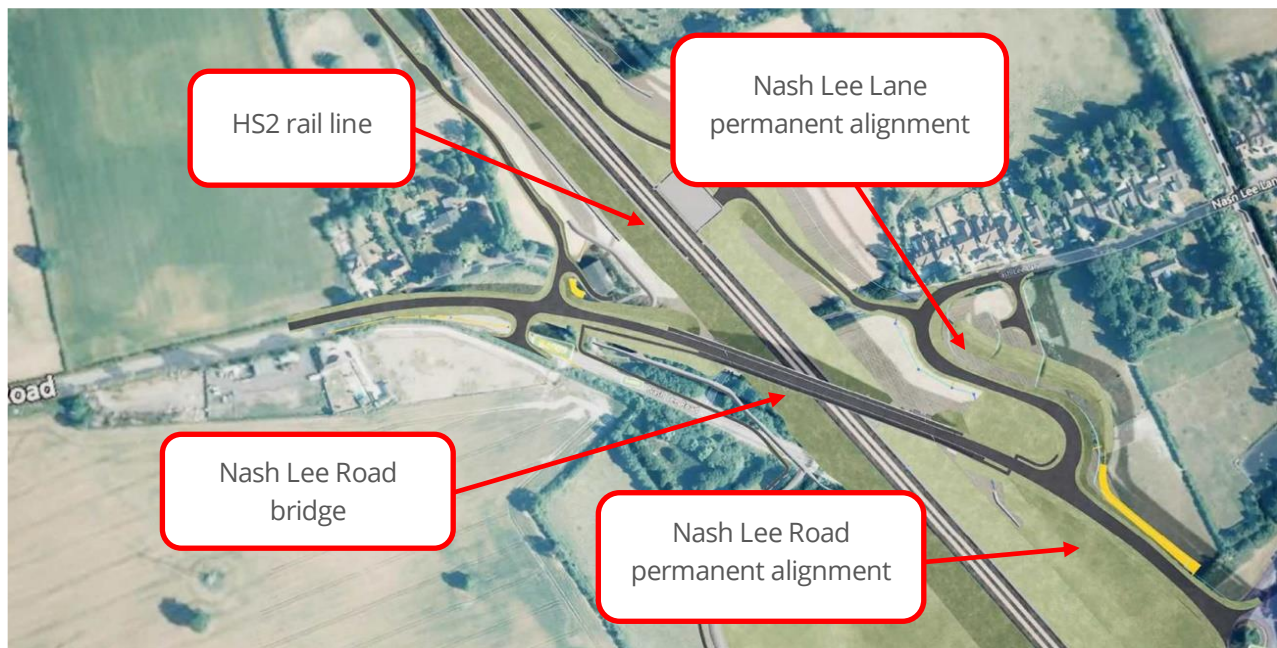
As you will see from the image below, the permanent alignment of Nash Lee Road will include a 150m bridge that will carry road traffic over the HS2 Line. As the rail will be in a cutting in this location the bridge will be kept low on the landscape. The new road layout will also include a new junction for Nash Lee Lane close to where the previous junction was located.

During construction of the permanent alignments, access to business and residential properties on Nash Lee Road and Nash Lee Lane will be maintained.

The construction of the new overbridge has already commenced with the piling for the abutment eastern abutment of the bridge.

As Nash Lee Road and Nash Lee Lane have been temporarily diverted the construction of the bridge and the final road alignment can be done 'offline' meaning our impact on the road in this location can be kept to a minimum. Please be aware that some temporary traffic management may still be required from time to time to complete these works.

We expect the permanent road layout to be operational in 2025.



The above drawing shows the permanent designs of Nash Lee Road and Nash Lee Lane

Keeping you informed

We are committed to keeping you informed about work on HS2. This includes ensuring you know what to expect and when to expect it, as well as how we can help.

Residents' Charter and Commissioner

The Residents' Charter is our promise to communicate as clearly as we possibly can with people who live along or near the HS2 route.
www.gov.uk/government/publications/hs2-residents-charter

We also have an independent Residents' Commissioner whose job is to make sure we keep to the promises we make in the Charter and to keep it under constant review. Find reports at:
www.gov.uk/government/collections/hs2-ltd-residents-commissioner

You can contact the Commissioner at:
residentscommissioner@hs2.org.uk

Construction Commissioner

The Construction Commissioner's role is to mediate and monitor the way in which HS2 Ltd manages and responds to construction complaints. You can contact the Construction Commissioner by emailing:
complaints@hs2-cc.org.uk

Property and compensation

You can find out all about HS2 and properties along the line of route by visiting:
www.gov.uk/government/collections/hs2-property
Find out if you're eligible for compensation at:
www.gov.uk/claim-compensation-if-affected-by-hs2

Holding us to account

If you are unhappy for any reason you can make a complaint by contacting our HS2 Helpdesk team. For more details on our complaints process, please visit our website:
www.hs2.org.uk/how-to-complain

Contact Us

Contact our HS2 Helpdesk team all day, every day of the year on:

 Freephone **08081 434 434**

 Minicom **08081 456 472**

 Email **hs2enquiries@hs2.org.uk**

Write to:

FREEPOST

HS2 Community Engagement

Website **www.hs2.org.uk**

To keep up to date with what is happening in your local area, visit:
www.hs2inyourarea.co.uk

Please contact us if you'd like a free copy of this document in large print, Braille, audio or easy read. You can also contact us for help and information in a different language.

HS2 Ltd is committed to protecting personal information. If you wish to know more about how we use your personal information please see our Privacy Notice
<https://www.gov.uk/government/publications/high-speed-two-ltd-privacy-notice>

Reference number: 1MC12-EKF-IN-NTE-CS03-000100

High Speed Two (HS2) Limited, registered in England and Wales.

Registered office: Two Snowhill, Snow Hill Queensway, Birmingham B4 6GA.

Company registration number: 06791686. VAT registration number: 888 8512 56.