



Update notice of investigation work and full road closure on Old Oak Common Lane

September 2023 | www.hs2.org.uk

High Speed Two (HS2) is the new high speed railway for Britain

Trial hole investigations on Old Oak Common Lane

We previously wrote to you about trial hole investigations on the south end of Old Oak Common Lane from 31 July, these works will now be ongoing until October 2023. You can read the previous notification here: <https://www.hs2.org.uk/work-items/update-notice-of-investigation-work-on-old-oak-common-lane/>.

Due to the positions of the holes, we will need to have ongoing single lane road closures, full road closures and footpath closures on the south end of Old Oak Common Lane until October 2023 whilst we carry out this work.

Full road closure Old Oak Common Lane south

In addition to the ongoing lane closures, there will be a **full weekend road closure at the southern end of Old Oak Common Lane from 0:01 Saturday 23 September until midnight Sunday 24 September**. We will be carrying out trial hole investigation work during this time. Please see the map on page two for locations of the work.

These dates are subject to change pending approvals and we will keep the local community informed of any changes.

We will be using a vacuum excavator, dumper, compaction equipment and small tools to complete this work. Noise screening will be in place while we carry out these works.

Pedestrian access through Old Oak Common Lane will be maintained and we ask you to follow the signage put in place.

If you have a question about HS2 or our works, please contact our HS2 Helpdesk team on 08081 434 434 or email hs2enquiries@hs2.org.uk

Duration of works

Ongoing single lane closures until October 2023

A full weekend road closure and trial hole activity at the southern end of Old Oak Common Lane from 0:01 Saturday 23 September to midnight Sunday 24 September

What to expect

Trial hole activity, full road closures and lane closures with clear access for pedestrians.

What we will do

Keep disruption to a minimum

Display clear signage showing the road is closed

Display signage to show pedestrian access

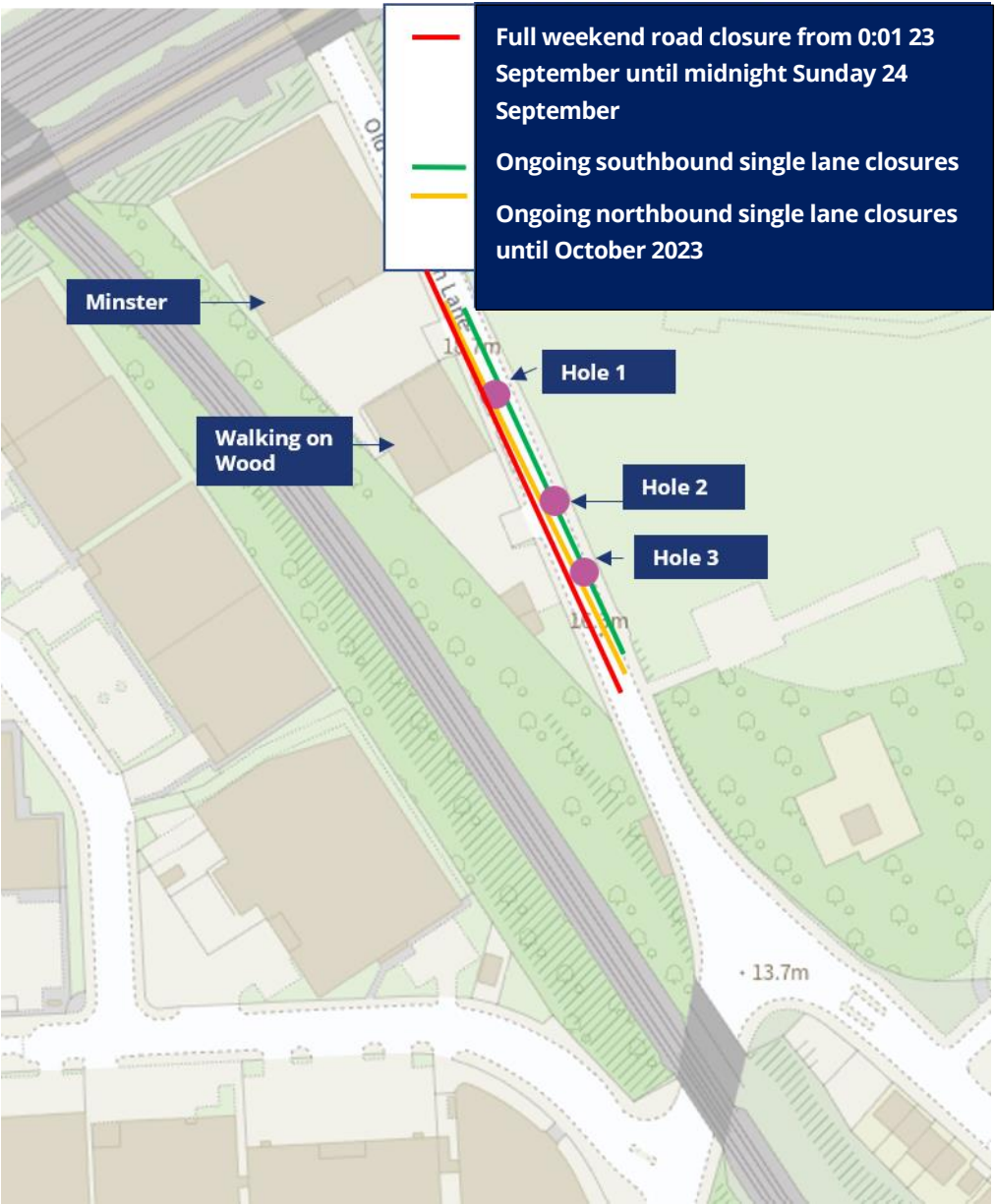
Provide update on HS2 in Old Oak and North Acton

Update notice of investigation works on Old Oak Common Lane

Notification



Map of location of works – Old Oak Common Lane south



Contact our HS2 Helpdesk team

Our team is here to listen and respond to your enquiry, complaint or feedback to help us be a good neighbour.

You can contact our Helpdesk team all day, every day of the year on:

Freephone: **08081 434 434**

Minicom: **08081 456 472**

Email: hs2enquiries@hs2.org.uk

Keep up-to-date with your local community website

To find out more about what's happening in your area and receive regular email updates, you can sign up to our local community websites at: www.hs2inyourarea.co.uk.

About our Community and Business Funds

We are offering two funds that are available to local communities and businesses between the West Midlands and London, to help with the disruption caused by our construction work. These are the Community and Environment Fund (CEF) and the Business and Local Economy Fund (BLEF).

The CEF is designed to give communities the opportunity to share in the benefits of HS2. It is an allocated fund that communities are able to apply for, to help to support local projects that aim to improve their local area.

The BLEF is designed to support local economies that may be disrupted by the construction of HS2. BLEF grants are for local business support organisations and local authorities to help maintain business activity in local communities.

For more information about each of these funds, including how to apply, please visit: <https://www.groundwork.org.uk/hs2funds>



Keeping you informed

We are committed to keeping you informed about work on HS2. This includes ensuring you know what to expect and when to expect it, as well as how we can help you.

The Residents' Commissioner

The independent Residents' Commissioner oversees and monitors our commitments to you.

The commissioner's reports and our responses can be found at www.gov.uk/government/collections/hs2-ltd-residents-commissioner

The Residents' Commissioner makes sure we fulfil the commitments in the HS2 Community Engagement Strategy (<https://bit.ly/3oOA25j>).

The Residents' Commissioner can be contacted on: residentscommissioner@hs2.org.uk

Construction Commissioner

The independent Construction Commissioner regularly meets our Chief Executive Officer to raise any concerns or emerging trends across HS2.

The Construction Commissioner's role has been developed to monitor the way we manage and respond to construction complaints.

The commissioner mediates on disputes about construction, involving individuals and organisations, that we can't resolve. The commissioner advises members of the public about how to make a complaint about construction.

The Construction Commissioner can be contacted on: complaints@hs2-cc.org.uk

Property and compensation

You can find out about HS2 and properties along the route by visiting:

www.gov.uk/government/collections/hs2-property

Find out if you can claim compensation at:

www.gov.uk/claim-compensation-if-affected-by-hs2

Holding us to account

If you are unhappy for any reason you can make a complaint by contacting the HS2 Helpdesk. For more details on our complaints process, please visit:

www.hs2.org.uk/in-your-area/contact-us/how-to-complain/

Contact us

Contact our HS2 Helpdesk team all day, every day of the year on:

 Freephone **08081 434 434**

 Minicom **08081 456 472**

 Email **HS2enquiries@hs2.org.uk**

Write to:

FREEPOST

HS2 Community Engagement

Website www.hs2.org.uk

To keep up to date with what is happening in your local area, visit: **www.HS2inyourarea.co.uk**

Please contact us if you'd like a free copy of this document in large print, Braille, audio or 'easy read' format. You can also contact us for help and information in a different language.

HS2 Ltd is committed to protecting personal information. If you wish to know more about how we use your personal information please see our Privacy Notice: <https://www.gov.uk/government/publications/high-speed-two-ltd-privacy-notice>

Reference number: HS2-MW-BBVS-Ph1-OOC-So-S1-prog-works-6-29/06/2023

High Speed Two (HS2) Limited, registered in England and Wales.

Registered office: Two Snowhill, Snow Hill Queensway, Birmingham B4 6GA.

Company registration number: 06791686. VAT registration number: 888 8512 56