

Contact our HS2 Helpdesk team on **08081 434 434**

# HS2 Update

Chiltern Tunnel | Summer 2023

**ALIGN**  
Working in  
partnership with **HS2**

## 'Florence' and 'Cecilia' reach Little Missenden

'Florence' and 'Cecilia' – the two giant tunnel boring machines (TBMs) digging HS2's longest tunnels – have reached the Little Missenden ventilation shaft, more than three quarters of the way through their 10 mile drive under the Chilterns. Read our full story: <https://mediacentre.hs2.org.uk/news/tunnel-progress-as-hs2s-florence-and-cecilia-reach-little-missenden>

To get here, we had to tunnel under the River Misbourne for a second time – after crossing for the first time earlier this summer. At the start of June, Florence tunnelled under the river first and was quickly followed by Cecilia. Safety of this operation was paramount to protecting one of the only 260 remaining chalk streams in the world. The team have been monitoring this area extensively and continue working closely with the Environment Agency, the environmental regulator in England, Affinity Water, the local water supplier, and local landowners.

Our drone footage provides a bird's eye view of our shaft sites in the Chilterns and allows you to see our sites independently:

<https://www.youtube.com/watch?v=gGgeXxkF22I>

The River Misbourne is a highly sensitive chalk stream and is a unique environment that is a haven for wildlife. It flows through a valley criss-crossed by public footpaths and is where high-quality groundwater is abstracted for public supply. In addition, near Little Missenden, the river flows into Shardeloes Lake, a well visited local water feature set in the grounds of Shardeloes House, an 18th Century Grade 1 listed building.

The protection and preservation of this precious river and aquifer have been at the forefront of our plans when considering the tunnelling process. The alignment of the Chiltern Tunnel passes under the River Misbourne at two locations, with the first at Chalfont St Giles, where we successfully passed in April 2022, and the second near Shardeloes Lake.

Align spoke at the Geological Society's 'Monitoring the Aquifers' conference earlier this summer where we shared information on our water monitoring regime along the C1 section of the HS2 route. To find out more about our water monitoring in the Chilterns, please view our water webinar from March 2023: <https://www.hs2.org.uk/building-hs2/viaducts-and-bridges/colne-valley-viaduct/managing-water-in-the-colne-valley-area/>



## Ground movement near Little Missenden

After discussions with relevant bodies, plans are underway to reinstate the small area of land close to Shardeloes where ground movement occurred in May. Works started on 29 August and are due to finish on 8 September during which time a daily traffic diversion will be in place from 10am to 3pm. Find out more: <https://www.hs2.org.uk/in-your-area/in-your-area-map/#15/51.6764/-0.6579/filter=hs2-stations,hs2-network,tbm/workId=56359>

The area surrounding the ground movement remains sealed and protected with security fencing which will remain in place until the reinstatement works are complete. During this time, a traffic diversion via Taylors Lane will be in place for local residents. We would like to remind the public not to enter this exclusion zone for their own safety. We have put together some Frequently Asked Questions that can be found by following this link: <https://www.hs2.org.uk/in-your-area/managing-impacts-of-construction/ground-settlement/>



Works started on 29 August and are due to finish on 8 September a daily lane closure on the A413 and road closure on Highmore Cottages will be in place whilst we reinstate the ground in Shardeloes.

## Community investment and social value: What's been going on?

We have been busy with our social value work in and around the Chilterns. By working with local stakeholders and representatives from the community, we've been able to make progress and make a real difference with our community investment and legacy work. Here is a peek at some of the initiatives and projects that are happening near you.

### Great Missenden walled garden

The Missenden Walled Garden charity provides day support for people with mental and physical disabilities and is based within the grounds of Missenden Abbey in Great Missenden.

The charity was seeking to replace their greenhouse facilities which fell into disrepair during the Covid pandemic. Some improvements were also required to enhance their community hub which would enable the facilities to remain useable in all weather conditions. In addition, we are in the process of providing funding for some new poly tunnels.

We also donated a large amount of sodium bicarbonate which is used to promote healthy growing conditions while simultaneously limiting fungal and other unwanted growth.



### Holmer Green Sports Association

When Holmer Green Sports Association (HGSA), together with Holmer Green FC (HGFC) needed some new Astro turf, they got in touch with Align for some financial support to make this possible. We were delighted to contribute and see the difference this makes to the local sporting facilities.

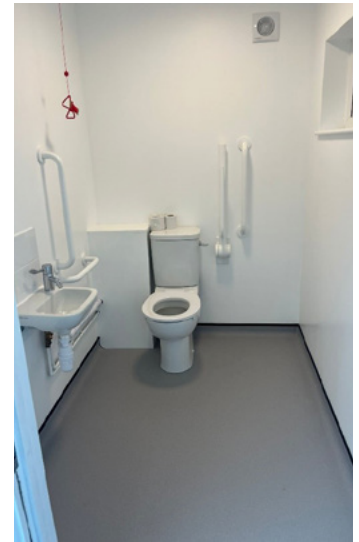


## Little Missenden C of E Primary School

We first became aware of the opportunity to work with Little Missenden primary school last summer through our monthly meetings with Little Missenden Parish Council. They informed us of some much-needed investment that would benefit the school, pupils and staff, and offered to introduce us to them in person. After going along to meet the headteacher we knew we could offer support straight away. And so began our relationship.

Our first job was to help decorate. We painted the toilet cubicles a neutral white to freshen them up. We were also able to offer some woodchip for the school playground, so we set about bagging it up and arranging delivery. All our woodchip is thoroughly checked by a fully qualified ecologist prior to handling as it is a very favourable habitat for little amphibians!

The school was also advised to apply for the Align JV community investment funding which meant that if successful, it would contribute towards extending the school and installing new safety playground flooring in the play area. Not only has this been achieved but the school has now been able to create a dedicated learning area for the nursery, and a new modern state of the art outdoor area that is accessible to all children meaning they are DDA (Disability Discrimination Act) compliant. Mrs Green, the headteacher at the school, said: *"Thanks to the funding from Align we have been able to start our long-awaited building works... this has made a huge difference. We are also very grateful to the team of Align volunteers who painted our school toilets. We hope this will make our offering as a school and nursery more attractive and in turn boost our intake."*



The new facilities at Little Missenden CofE Primary School



Align staff, Bobbette Watson, Jemma Regnard and Katie Goodwin visit the school

## Market Place, Old Amersham

This Grade II listed building in Amersham is used by numerous community groups, including a yoga club, numerous arts and crafts groups as well as hosting other recreational activities which promote community cohesion, positive mental health and wellbeing.

As part of a wider-scale regeneration, funding is in the process of being awarded for a new kitchen that would benefit everyone who uses the facility. We are sure the renovations will encourage residents to enjoy the upgrade and increase community gatherings.



## Chiltern Open Air Museum

Chiltern Open Air Museum in Chalfont St Giles is an outdoor charity museum run by volunteers. It is also the home of rescued and reconstructed historic buildings, and a working farm that is set in 45 acres of beautiful woodland and countryside.

The installation of inclusive benches for wheelchair users around the site will encourage open safe space use.



## Chalfont St Giles playground

Pheasant Hill playground is located in the heart of Chalfont St Giles village. Chalfont St Giles Parish Council reached out to Align to see how we could work in collaboration with the parish council and Buckinghamshire Council Community Board in breathing new life into the playground for future generations. If you haven't visited lately, please go and have a look! We are sure your little ones will enjoy the enhanced space.



Pheasant Hill  
Playground

## Social Value

Here at Align JV we are passionate about supporting local people. We regularly carry out litter picks, support with road closures, collect donations at fundraising events, and can help paint and decorate communal areas. Reach out to us if you think we could help: [communityengagement@alignjv.com](mailto:communityengagement@alignjv.com)

HS2 also has its own community funding. For information on HS2's Community and Environment Fund (CEF) and the Business and Local Economy Fund (BLEF) please visit the HS2 website - <https://www.hs2.org.uk/in-your-area/community-funding/>



# Shaft Updates

## Chalfont St Peter

Our first ventilation shaft at Chalfont St Peter is the most developed. Our works here in recent months have consisted of constructing the connections to the tunnels, including demolition of internal walls, waterproofing the area and concrete reinforcement. For the basement and headhouse, we are now working on the internal structures and concrete reinforcement. Some of the external works have now started too, including, drainage, services, and landscaping.

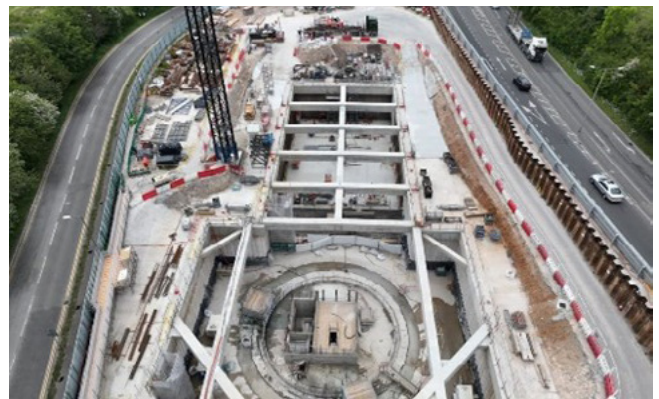


## Chalfont St Giles

At our second ventilation shaft in Chalfont St Giles, the recent works have been similar to that of Chalfont St Peter. For the basement and headhouse, we are working on internal walls. The connections to the tunnels are well underway and include demolition of internal walls, waterproofing them and concrete reinforcement. Some of the external works, including drainage, services, and landscaping have also now started.

## Amersham

Works inside our third shaft at Amersham consist of creating the walls and floors with reinforced concrete. Structural work continues for the basement with more reinforced concrete works. To seal the waterproofing membrane within the structure, we carry out what's known as a liner wall pour. These are both expected to be complete by early spring 2024. We have just started work on the tunnel connections and in spring 2024, we will begin working on the headhouse and the installation of final drainage arrangements.





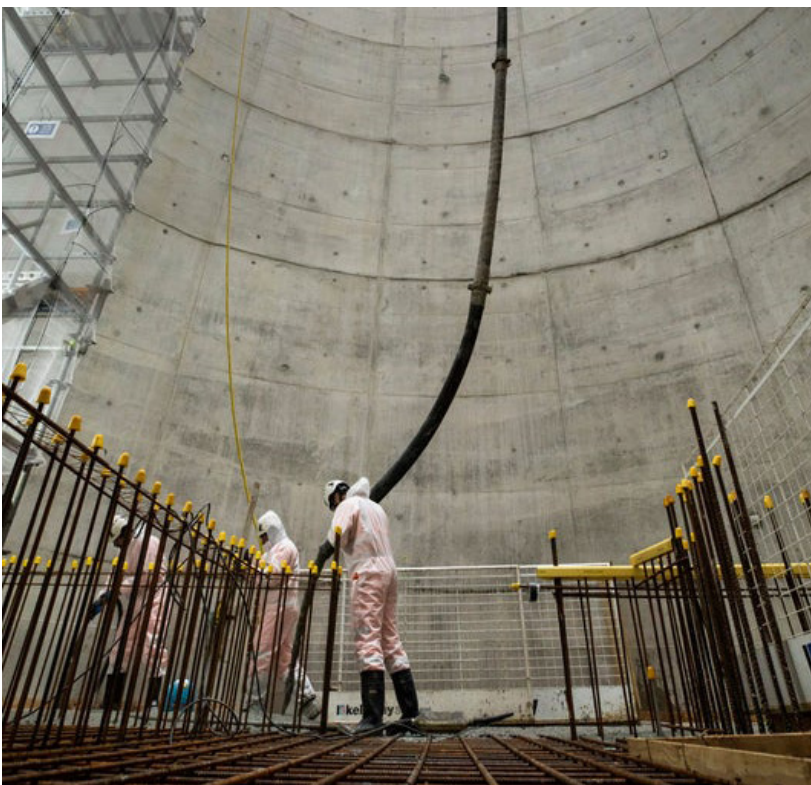
## Little Missenden

Our TBMs arrived at our fourth ventilation shaft at Little Missenden earlier in the summer. Florence received some planned maintenance for approximately two weeks, before setting off again and Cecilia was running approximately three weeks behind her. They are operating on schedule and are expected to reach our Chesham Road site around November this year.

Construction work at Little Missenden is focused on hydro demolition of the shaft external wall, creating the permanent internal stairs and tunnel connections. The shallow basement internal work includes creating a structural slab and completing the wall lining.



Until December 2023 there will be monthly lane closures of the northbound carriageway of the A413, between Amersham and Little Missenden, to facilitate ground survey works during the tunnelling.



## Chesham Road

Work continues here, at our only intervention shaft that will be used for emergency access only, with a focus on the internal structures. The headhouse construction has also begun. Firstly, we will excavate the ground until a level is reached where a foundation slab can be built using reinforced concrete. The walls of the headhouse and automatic transfer switch building (an ATS building is where transformers that power the railway line are housed), are built on top of the foundation.



Hyde Lane is closed to traffic from 17 July for approximately eight weeks. This is so Affinity Water can upgrade their network for the water supply to our North Portal site.



A five-day lane closure with temporary traffic lights will be in place at some point in the future whilst UKPN connect our Chesham Road site to mains electric. We will keep you updated on dates once these are agreed.

## North Portal

Our main activities here are constructing the head wall (where the TBMs exit the tunnel) and the track slabs which the train will run on. As these works require continuous concrete pours, we are operating under extended working hours during the summer which are from Monday to Saturday, between 7am to 10pm. Our other works include drainage installation. The tunnel boring machines are expected to arrive here early next year.



North Portal internal access road



### Drop ins – come and talk to us

We have a number of drop in events throughout 2023. These are where residents and businesses can pop in and talk to the engagement team about the project, any local impacts from our works or how we can support local groups through community investment.



### The Chalfonts (Chalfont St Peter/Chalfont St Giles)

- **Thursday 16 November**

Chalfont St Giles Memorial Hall, School Lane, Chalfont St Giles, HP8 4JJ.

### Amersham and Little Missenden

- **Monday 16 October**

Amersham Free Church, Woodside Road, HP6 6AJ.

- **Thursday 14 December**

Kings Church, Raans Road, HP5 9LX.

### Chesham from 4pm – 7pm

- **10 October**

Chesham Town Hall, Parsonage Lane, Chesham, HP5 1EP.

### North Portal (South Heath, Gt Missenden and Hyde Heath/Chesham Road)

- **Thursday 14 September and Thursday 7 December**

Gt Missenden Memorial Hall, Link Road, Gt Missenden, HP16 9AE.



**Apart from Chesham, all drop in events are from 3pm to 7pm.**



## Keeping you informed

We are committed to keeping you informed about work on HS2. This includes ensuring you know what to expect and when to expect it, as well as how we can help you.

### The Residents' Commissioner

The independent Residents' Commissioner oversees and monitors our commitments to you.

The commissioner's reports and our responses can be found at [www.gov.uk/government/collections/hs2-ltd-residents-commissioner](http://www.gov.uk/government/collections/hs2-ltd-residents-commissioner)

The Residents' Commissioner makes sure we fulfil the commitments in the HS2 Community Engagement Strategy (<https://bit.ly/3oOA25j>).

The Residents' Commissioner can be contacted on: [residentscommissioner@hs2.org.uk](mailto:residentscommissioner@hs2.org.uk)

### Construction Commissioner

The independent Construction Commissioner regularly meets our Chief Executive Officer to raise any concerns or emerging trends across HS2.

The Construction Commissioner's role has been developed to monitor the way we manage and respond to construction complaints.

The commissioner mediates on disputes about construction, involving individuals and organisations, that we can't resolve. The commissioner advises members of the public about how to make a complaint about construction.

The Construction Commissioner can be contacted on: [complaints@hs2-cc.org.uk](mailto:complaints@hs2-cc.org.uk)

### Property and compensation

You can find out about HS2 and properties along the route by visiting:

[www.gov.uk/government/collections/hs2-property](http://www.gov.uk/government/collections/hs2-property)

Find out if you can claim compensation at:

[www.gov.uk/claim-compensation-if-affected-by-hs2](http://www.gov.uk/claim-compensation-if-affected-by-hs2)

### Holding us to account

If you are unhappy for any reason you can make a complaint by contacting the HS2 Helpdesk. For more details on our complaints process, please visit:

[www.hs2.org.uk/in-your-area/contact-us/how-to-complain/](http://www.hs2.org.uk/in-your-area/contact-us/how-to-complain/)

**Reference number: HS2-MW-Align-Ph1-Ar-Ce-C1-CR-41-05/07/2023**

High Speed Two (HS2) Limited, registered in England and Wales.


Registered office: Two Snowhill, Snow Hill Queensway, Birmingham B4 6GA.

Company registration number: 06791686. VAT registration number: 888 8512 56

### Contact us

Contact our HS2 Helpdesk team all day, every day of the year on:

 Freephone 08081 434 434

 Minicom 08081 456 472

 Email [HS2enquiries@hs2.org.uk](mailto:HS2enquiries@hs2.org.uk)

Write to:  
FREEPOST  
HS2 Community Engagement

Website [www.hs2.org.uk](http://www.hs2.org.uk)

To keep up to date with what is happening in your local area, visit:

Please contact us if you'd like a free copy of this document in large print, Braille, audio or 'easy read' format. You can also contact us for help and information in a different language.

HS2 Ltd is committed to protecting personal information. If you wish to know more about how we use your personal information please see our Privacy Notice: <https://www.gov.uk/government/publications/high-speed-two-ltd-privacy-notice>