

Contact our HS2 Helpdesk team on 08081 434 434

HS2 Update

Chiltern Tunnel | Spring 2023

ALIGN
Working in
partnership with **HS2**

North Portal design update event

Over the course of the last four years, we have been running a programme of engagement events for the structures known as Key Design Elements (KDEs). These are some of the visible structures of the railway, including the buildings that house the operational equipment at the vent shafts and the ancillary buildings at either end of the Chiltern Tunnel.

Our approach to engagement on these KDEs has been to hold a round of public events seeking views and ideas from the community, followed by a later 'You said, we did' event where we present the feedback we received to the community and show how that feedback was used in our updated design.

Our final KDE event will present the updated design for the Chiltern Tunnel North Portal ancillary building which will be built near South Heath, Buckinghamshire. This will house mechanical and electrical equipment for the railway.



North Portal KDE event:
Tuesday 21 March 2023,
From 2.30pm to 7.30pm

Great Missenden Abbey,
London Road, HP16 0BD.

Online webinar:
Tuesday 28 March,
From 6:30pm to 8:00pm

Register for the webinar at:
<https://Chiltern-Tunnel-North-Portal-Update.eventbrite.co.uk>



North Portal, South Heath

Construction at the North Portal

We are building internal roads and drainage here whilst continuing with the creation of the North Portal head wall, ready to receive our two tunnel boring machines, Florence and Cecilia, in early 2024.

We are working alongside the adjacent joint venture company constructing the railway, EKFB, who are building the railway line from the North Portal northwards towards Wendover, Buckinghamshire through to Warwickshire .



North Portal, South Heath



Frith Hill road closure

From mid-March to mid-April 2023 Frith Hill, South Heath leg, will be closed for the creation of a bell-mouth junction. This permanent access point will allow maintenance vehicles to access the site when the railway is running. UK Power Networks will also be working in the area.

Vent shafts update

Chalfont St Peter

This vent shaft (right), which is for both ventilation and emergency access for the Chiltern Tunnel, is where our construction work is most advanced. The tunnel boring machines passed through at the beginning of 2022 and we have recently just completed the connection of the base of the shaft and the tunnel.



Chalfont St Peter vent shaft tunnel connection



Chalfont St Giles vent shaft

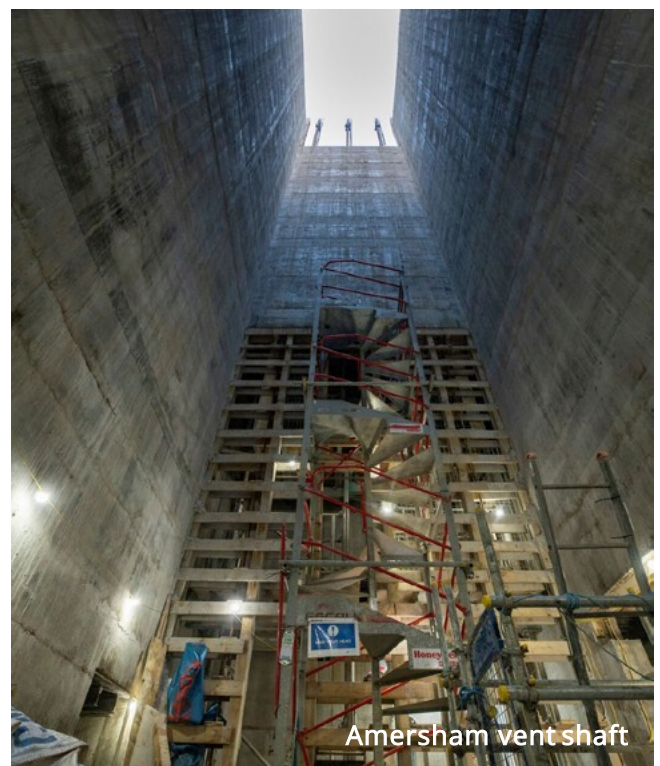
Chalfont St Giles

Currently the site team at Chalfont St Giles (left) are working on the base of the building which will house all of the mechanical and electrical equipment managing the air flow in the tunnel. They will be connecting into the tunnel in late spring this year, as they have already done at Chalfont St Peter.

Amersham

The tunnel boring machines passed through the Amersham vent shaft in February this year and are now tunnelling towards Little Missenden.

We expect them to arrive at the Little Missenden shaft in early summer this year. Currently the site team are working on the creation of the vent shaft building base and walls.



Amersham vent shaft

Little Missenden



The main activities at the Little Missenden vent shaft site include the construction of the internal shaft structure which requires regular concrete pours. Our tunnel boring machines will reach this vent shaft this summer.



Little Missenden vent shaft



Until December 2023 there will be frequent lane closures of the northbound carriageway of the A413, between Amersham and Little Missenden, to facilitate ground survey works during the tunnelling.

Chesham Road

Construction works to the internal structure and creation of the base for the intervention shaft building continue at this site.

There will be a lane closure on the B455 until mid-March 2023 as UK Power Networks work to connect the vent shaft site to the electrical network.



Chesham Road intervention shaft

Community investment and social value



We are committed to working closely with communities in the areas we are constructing HS2. Through our engagement we seek to deliver benefits that will deliver a more sustainable independent community that enhances the lives and wellbeing of the residents, and the communities in which we are working.

Align JV aim to generate value and long-term social impact through a series of planned community investment activities. Our staff volunteer their time to work with local schools, businesses, charities and environmental and community groups to provide support, deliver projects and share expertise and resources. We make donations to local schools, charities and community initiatives when we have the resources available to support them.

We also have a small community investment fund that allows us to support projects and initiatives in the local community. If you have an idea for a community project that may benefit from our investment fund, please use the application form on our website –

<https://alignjv.com/communities-1#engagement-investment>

If you would like to discuss a potential project or request our help in delivering a community scheme, please contact us by email to communityengagement@alignjv.com

All applications to the community investment fund are reviewed against our sustainability criteria. Please be aware that projects will need to demonstrate how they tackle economic inequality, support equality, diversity and inclusion, tackle climate change and/or promote health and wellbeing. We encourage all applicants to think about the following questions before submitting their application:

- What is the need/ requirement for the project?
- How many people will it benefit?
- How will people benefit?
- Does the project have long term benefits?
- Is there a community legacy beyond construction?
- Is it inclusive?
- Does it support community cohesion?
- Will it upskill or empower individuals or groups?

Align JV charity partnerships

In 2022 we partnered with two charities based in Hertfordshire and Buckinghamshire where we are constructing both the Chiltern Tunnel and the Colne Valley Viaduct.

- Action for Children located in West Hyde, Hertfordshire and on the doorstep of Align's South Portal site, provides residential and activity-based respite for children and young people with learning disabilities, autism, multiple impairments and complex health needs
- Epilepsy Society located in Chalfont St Peter, Buckinghamshire is the UK's leading organisation for epilepsy research and support. The centre and clinic offer the most advanced techniques for the diagnosis and treatment of epilepsy.

The fundraising efforts of colleagues and Align JV's own contribution allow us to directly support and give back to the communities in the local area. We support Hillingdon Food Bank and Motor Neurone Disease Association with regular donations.

Our supply chain also play an important role in empowering and supporting our charitable initiatives.

HS2 also has it own community funding. For information on HS2's Community and Environment Fund (CEF) and the Business and Local Economy Fund (BLEF) please visit the HS2 website: <https://www.hs2.org.uk/in-your-area/community-funding/>

Job opportunities



In January this year HS2 celebrated a major milestone, with over a thousand apprentices having started on the project. In total 1,126 are now working along the line of route for the joint ventures that are constructing the permanent structures of the railway.

HS2's target is to create 2,000 apprenticeships.

In September 2020 when construction began on the first phase of the railway from London to Birmingham, HS2 forecast that it would create 22,000 jobs in the coming years.

The skilled workforce has now reached nearly 30,000, with thousands more jobs supported across the country in the wider supply chain.

Align have now recruited just one hundred apprentices working across all of our sites, including in the Chiltern Tunnel, vent shaft teams, and support teams. Our apprentices start range from new starters aged just 17 years old to apprentices over 40 years old, showing that its never too late to change career or learn new skills as an apprentice.

HS2 are actively recruiting for many new roles across the project and within the supply chain, including experienced engineers, apprenticeships and internships.

You can search and apply at www.hs2.org.uk/jobs-and-skills.

Community investment work in the Chilterns

Little Missenden Infant and Nursery School

Our volunteers gave the toilets at Little Missenden Infant and Nursery School a fresh coat of paint. We also bagged and transported woodchip stored at our South Portal site to the school to be used in the school grounds.



Foodbank drive

Align's social value team ran a month-long foodbank drive in September, with boxes to donate food placed across all of our construction sites.

We were able to deliver large quantities of food to a number of foodbanks, including St George's Church, Little Chalfont emergency food hub.

We continue to support local foodbanks in Hertfordshire, Hillingdon and Buckinghamshire throughout 2023.



Road closure support

At the end of last year we were approached by Chalfont St Giles Parish Council to support them with the road closure for the Remembrance Sunday event in the village. Align, with the support of our logistics team at Volker Highways, supplied all the necessary signage and technical support to allow the road to be closed so the event could take place safely. We came out again to manage a road closure when Amersham Town Council asked us to help support the Christmas light switch on ceremony on the High Street, Old Amersham.

Phoenix café

Eight staff volunteers from Align spent two days volunteering in December last year, removing tiling before painting the rooms in The Epilepsy Society's Phoenix Café.

The rooms were completely transformed. Align supplied the equipment with the Epilepsy Society providing the paint.

The newly painted rooms are being used as a games room and new IT space for residents and visitors.

If you have an idea for a volunteering project let us know!



Community events

Online event: water in the Chilterns and Colne Valley

On Thursday 23 March from 6:30pm we will be holding an online webinar about HS2 and the ways in which we safeguard the quality and supply of water during our works in the Chilterns and the Colne Valley.

Our experts will share details of how water treatment, monitoring and construction mitigation across our sites is being employed to reduce and prevent impacts on ground and surface water. There will be an opportunity to ask questions in a Q&A session after the webinar.

To book a place at the webinar scan the QR code or sign up at:

<https://HS2Align-water-webinar.eventbrite.co.uk>



Drop in events – come and talk to us

We have a number of drop in events throughout 2023. These are where residents and businesses can pop in and talk to the engagement team about the project, any local impacts from our works or how we can support local groups through community investment. All drop in events run from 3pm to 7pm.



The Chalfonts (Chalfont St Peter/Chalfont St Giles)

- Thursday 13 April
- Thursday 1 June
- Monday 14 August
- Thursday 16 November

Chalfont St Giles Memorial Hall, School Lane, Chalfont St Giles, HP8 4JJ



Amersham and Little Missenden

- Thursday 27 April
- Thursday 13 July
- Further dates to be announced

The Royal British Legion Hall, Whielden Street, Amersham, HP7 0JB

North Portal (South Heath, Gt Missenden and Hyde Heath/Chesham Road)

- Tuesday 18 April (a further opportunity to view designs for the North Portal)
- Thursday 15 June
- Thursday 14 September
- Thursday 7 December

Gt Missenden Memorial Hall, Link Road, Gt Missenden, HP16 9AE

Keeping you informed

We are committed to keeping you informed about work on HS2. This includes ensuring you know what to expect and when to expect it, as well as how we can help you.

The Residents' Commissioner

The independent Residents' Commissioner oversees and monitors our commitments to you.

The commissioner's reports and our responses can be found at www.gov.uk/government/collections/hs2-ltd-residents-commissioner

The Residents' Commissioner makes sure we fulfil the commitments in the HS2 Community Engagement Strategy (<https://bit.ly/3oOA25j>).

The Residents' Commissioner can be contacted on: residentscommissioner@hs2.org.uk

Construction Commissioner

The independent Construction Commissioner regularly meets our Chief Executive Officer to raise any concerns or emerging trends across HS2.

The Construction Commissioner's role has been developed to monitor the way we manage and respond to construction complaints.

The commissioner mediates on disputes about construction, involving individuals and organisations, that we can't resolve. The commissioner advises members of the public about how to make a complaint about construction.

The Construction Commissioner can be contacted on: complaints@hs2-cc.org.uk

Property and compensation

You can find out about HS2 and properties along the route by visiting: www.gov.uk/government/collections/hs2-property

Find out if you can claim compensation at: www.gov.uk/claim-compensation-if-affected-by-hs2


Holding us to account

If you are unhappy for any reason you can make a complaint by contacting the HS2 Helpdesk. For more details on our complaints process, please visit: www.hs2.org.uk/in-your-area/contact-us/how-to-complain/

Contact us

Contact our HS2 Helpdesk team all day, every day of the year on:

 Freephone 08081 434 434

 Minicom 08081 456 472

 HS2enquiries@hs2.org.uk

Write to:

FREEPOST
HS2 Community Engagement

Website www.hs2.org.uk

To keep up to date with what is happening in your local area, visit:

Please contact us if you'd like a free copy of this document in large print, Braille, audio or 'easy read' format. You can also contact us for help and information in a different language.

HS2 Ltd is committed to protecting personal information. If you wish to know more about how we use your personal information please see our Privacy Notice: <https://www.gov.uk/government/publications/high-speed-two-ltd-privacy-notice>

Reference number: HS2-MW-EK-Ph1-Ar-Ce-C2-Prog-work s-7-01/09/2023 1MC12-EKF-IN-NTE-CS03-000057

High Speed Two (HS2) Limited, registered in England and Wales.

Registered office: Two Snowhill, Snow Hill Queensway, Birmingham B4 6GA.

Company registration number: 06791686. VAT registration number: 888 8512 56