

Notice of a temporary diversion of Public Right of Way SM200, Wormleighton

High Speed Two (HS2) is the new high speed railway for Britain. If you have any questions or enquiries about our work, please contact our Helpdesk to find out more. You can sign up for regular updates in your local area at www.hs2inyourarea.co.uk.

What are we doing?

We are building a viaduct to carry the railway over the Oxford Canal, near Wormleighton.

The towpath along the canal is a Public Right of Way (PROW) known as SM200 and runs through the construction area where we are building the viaduct.

A small section of the towpath will be temporarily diverted for approximately one year, while we construct the viaduct.

More information about the design of the Oxford Canal Viaduct can be found on the HS2 website.

Click here: [Oxford Canal Viaduct - HS2](#)

When will these works take place?

The towpath, near Wormleighton, will be temporarily diverted from Monday 3 July 2023 until autumn 2025.

These works are subject to local authority consents.

If you have a question about HS2 or our works, please contact our HS2 Helpdesk team on 08081 434 434 or email hs2enquiries@hs2.org.uk

If you have a question about HS2 or our works, please contact our HS2 Helpdesk team on 08081 434 434 or email hs2enquiries@hs2.org.uk

Duration of works

The Public Right of Way and towpath (SM200) which runs alongside the Oxford Canal will be temporarily diverted from Monday 3 July 2023 until autumn 2025.

What to expect

Restrictions on canal access and the closure of the towpath SM200, with a diversion in place.

Noise from plant and equipment used the bridge installation.

Some additional work beyond core hours including weekends.

What we will do

Manage any environmental impacts, such as traffic and noise.

Respond promptly to any complaints and take appropriate action.

Take care to respect the community.

Notice of a temporary closure of the Oxford Canal and towpath, Wormleighton

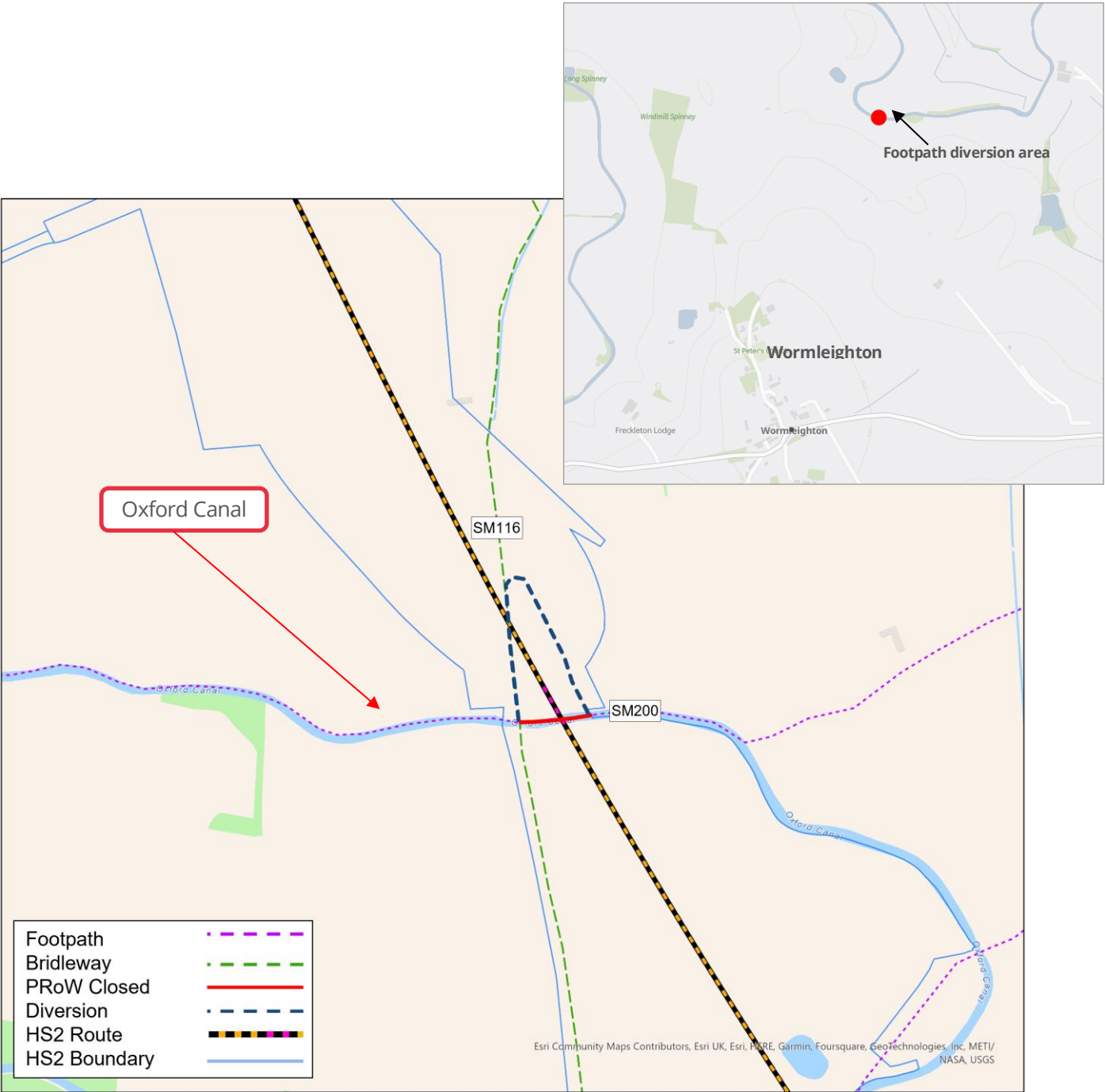
www.hs2.org.uk

Notification



Where will the works take place?

The map below gives the general location of the towpath and the temporarily diversion required to build the Oxford Canal Viaduct. A signed diversion will be in place for the public rights of way known as SM200.



Keeping you informed

We are committed to keeping you informed about work on HS2. This includes ensuring you know what to expect and when to expect it, as well as how we can help.

Residents' Charter and Commissioner

The Residents' Charter is our promise to communicate as clearly as we possibly can with people who live along or near the HS2 route.
www.gov.uk/government/publications/hs2-residents-charter

We also have an independent Residents' Commissioner whose job is to make sure we keep to the promises we make in the Charter and to keep it under constant review. Find reports at:
www.gov.uk/government/collections/hs2-ltd-residents-commissioner

You can contact the Commissioner at:
residentscommissioner@hs2.org.uk

Construction Commissioner

The Construction Commissioner's role is to mediate and monitor the way in which HS2 Ltd manages and responds to construction complaints. You can contact the Construction Commissioner by emailing:
complaints@hs2-cc.org.uk

Property and compensation

You can find out all about HS2 and properties along the line of route by visiting:
www.gov.uk/government/collections/hs2-property
Find out if you're eligible for compensation at:
www.gov.uk/claim-compensation-if-affected-by-hs2

Holding us to account

If you are unhappy for any reason you can make a complaint by contacting our HS2 Helpdesk team. For more details on our complaints process, please visit our website:
www.hs2.org.uk/how-to-complain

Contact Us

Contact our HS2 Helpdesk team all day, every day of the year on:

 Freephone **08081 434 434**

 Minicom **08081 456 472**

 Email **hs2enquiries@hs2.org.uk**

Write to:

FREEPOST

HS2 Community Engagement

Website **www.hs2.org.uk**

To keep up to date with what is happening in your local area, visit:
www.hs2inyourarea.co.uk

Please contact us if you'd like a free copy of this document in large print, Braille, audio or easy read. You can also contact us for help and information in a different language.

HS2 Ltd is committed to protecting personal information. If you wish to know more about how we use your personal information please see our Privacy Notice
<https://www.gov.uk/government/publications/high-speed-two-ltd-privacy-notice>

Reference number: HS2-MW-EK-Ph1-Ar-Ce-C2-Traf-01-13/06/2023

High Speed Two (HS2) Limited, registered in England and Wales.
Registered office: Two Snowhill, Snow Hill Queensway, Birmingham B4 6GA.
Company registration number: 06791686. VAT registration number: 888 8512 56.