

Update: Extended utility works on Bridgwater Road, South Ruislip

May 2023 | www.hs2.org.uk

High Speed Two (HS2) is the new high speed railway for Britain.

You can sign up for regular updates in your local area at hs2inhillillingdon.co.uk

Water main works

We wrote to you in March 2023 to let you know that we would be carrying out the mains water lining works in Bridgwater Road and the need to extend our works until 31 May 2023. These works have been delayed again and will now continue until **18 June 2023**.

From 15 May to 18 June 2023, we will be carrying out water main protection works on Bridgwater Road. These works will include replacement of the existing water main and associated water service/valves, within the carriageway and connection points located on both ends of the footpath.

The works will be carried out in a programmed sequence, which involves:

- Installation of water pipe and valves
- Installation of new drinking water main and open cut trench
- Diversion of a water main pipeline

How these works might affect you

A road and footpath closure will be in place during these works.

To reduce the effects of the noisiest work:

- Acoustic Blankets will be used on Heras panels to reduce noise levels;
- Plant and equipment will be switched off when not in use;
- Operatives will be briefed on control measures; and
- Radios will be used for communication to keep voices low.

If you have a question about HS2 or our works, please contact our HS2 Helpdesk team on 08081 434 434 or email hs2enquiries@hs2.org.uk

Notification



Duration of works

On Bridgwater Road
15 May to 18 June 2023

Site compound on Bridgwater playing fields ongoing until 14 July 2023

Working hours: Monday to Saturday 8am and 6pm and

Sunday 10am to 4pm, when required with limited activities

What to expect

Road closure in place until works are completed

Periods of increased noise from reinstatement

What we will do

Monitor our work methods and minimise disruption to residents

Use acoustic barriers to mitigate the noise

Plan works to limit noise and reduce the impact on residents

Instruct our staff to be mindful of our neighbours

Provide updates at hs2inhillillingdon.co.uk

Update: Extended utility works on Bridgwater Road, South Ruislip

www.hs2.org.uk

Notification



Closure of Bridgwater Road remains in place until 18 June 2023

The sections of the water main replacement on Bridgwater Road are from outside number 87, under the railway bridge, to the corner of Carmichael Close and across the playing field. Space constraints and the location of utilities here means a road closure is necessary to allow the work to be completed safely.

The northern footpath will remain open for pedestrians. The southern footpath will remain open to allow residents access to their properties.

There will be a clear diversion route during the road closure. The diversion will be fully signed and managed at both ends of the closed section. The diversion route will be through West End Road, south to Station Approach and via Victoria Road. Please see a map of the diversion route on page 4.

Programme of utility works

Duration	Activity	Description
From 15 May to 18 June 2023	Affinity Waters works	<ul style="list-style-type: none">• Installation of water pipe, valves and transfer of services• Installation of new drinking water main and open cut trench• Diversion of a water main pipeline
From 18 June to 14 July 2023	Demobilisation of site compound within the Field	<ul style="list-style-type: none">• Reinstatement of 2 pits dug for pipe work• Hoarding removal• Removal of equipment• Field reinstated

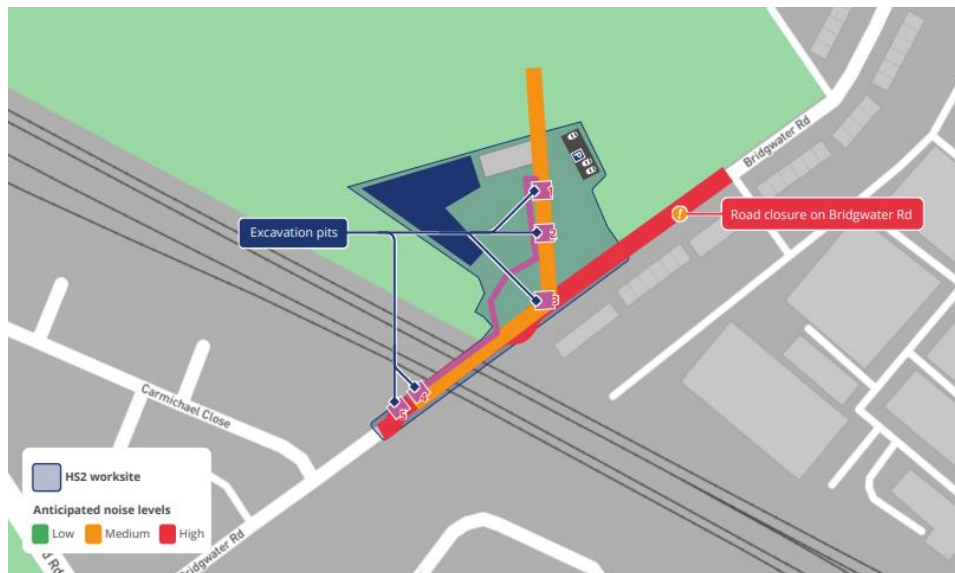
Update: Extended utility works on Bridgwater Road, South Ruislip

Notification



www.hs2.org.uk

Map showing location of road closure, site compound and work areas



Contact our HS2 Helpdesk team on **08081 434 434**

Keeping you informed

We are committed to keeping you informed about work on HS2. This includes ensuring you know what to expect and when to expect it, as well as how we can help.

Residents' Charter and Commissioner

The Residents' Charter is our promise to communicate as clearly as we possibly can with people who live along or near the HS2 route.
www.gov.uk/government/publications/hs2-residents-charter

We also have an independent Residents' Commissioner whose job is to make sure we keep to the promises we make in the Charter and to keep it under constant review. Find reports at:
www.gov.uk/government/collections/hs2-ltd-residents-commissioner

You can contact the Commissioner at:
residentscommissioner@hs2.org.uk

Construction Commissioner

The Construction Commissioner's role is to mediate and monitor the way in which HS2 Ltd manages and responds to construction complaints. You can contact the Construction Commissioner by emailing:
complaints@hs2-cc.org.uk

Property and compensation

You can find out all about HS2 and properties along the line of route by visiting:
www.gov.uk/government/collections/hs2-property
Find out if you're eligible for compensation at:
www.gov.uk/claim-compensation-if-affected-by-hs2

Holding us to account

If you are unhappy for any reason you can make a complaint by contacting our HS2 Helpdesk team. For more details on our complaints process, please visit our website:
www.hs2.org.uk/how-to-complain

Contact Us

Contact our HS2 Helpdesk team all day, every day of the year on:

 Freephone **08081 434 434**

 Minicom **08081 456 472**

 Email **hs2enquiries@hs2.org.uk**

Write to:

FREEPOST

HS2 Community Engagement

Website **www.hs2.org.uk**

To keep up to date with what is happening in your local area, visit:
www.hs2inyourarea.co.uk

Please contact us if you'd like a free copy of this document in large print, Braille, audio or easy read. You can also contact us for help and information in a different language.

HS2 Ltd is committed to protecting personal information. If you wish to know more about how we use your personal information please see our Privacy Notice
<https://www.gov.uk/government/publications/high-speed-two-ltd-privacy-notice>

Reference number: HS2-EW-SCS-Ph1-Ar-So-S2-UT-1-22/07/22_05

High Speed Two (HS2) Limited, registered in England and Wales.

Registered office: Two Snowhill, Snow Hill Queensway, Birmingham B4 6GA.

Company registration number: 06791686. VAT registration number: 888 8512 56.