

Background



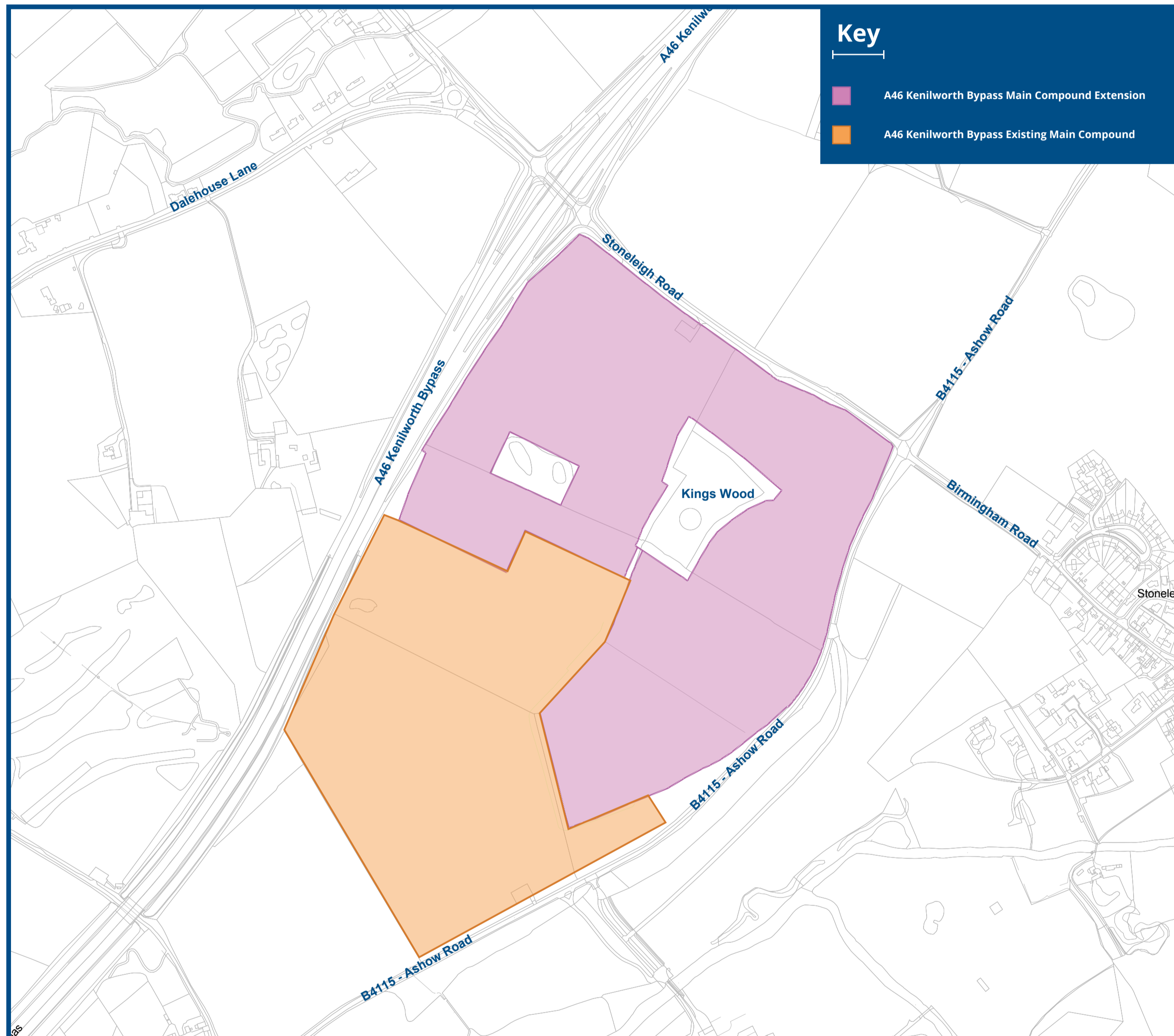
Our current A46 Kenilworth Bypass Main Compound includes office space, welfare facilities for our team and car parking.

This is where much of the engineering, planning and construction activities take place to build the HS2 railway in this location.

We are proposing to temporarily extend the compound to accommodate more construction materials. This will mean that once the extension is complete, there will be fewer construction vehicles on local roads than there are currently.

Our temporary compound extension will coincide with Warwickshire County Council's A46 Stoneleigh Junction improvement scheme, which is currently under construction and our proposed roundabout on Stoneleigh Road, which is subject to a separate planning consent.

Our site will be in use from 2023 to 2028.



Site location plan showing where our proposed A46 Kenilworth Bypass Main Compound temporary extension will be

Proposals



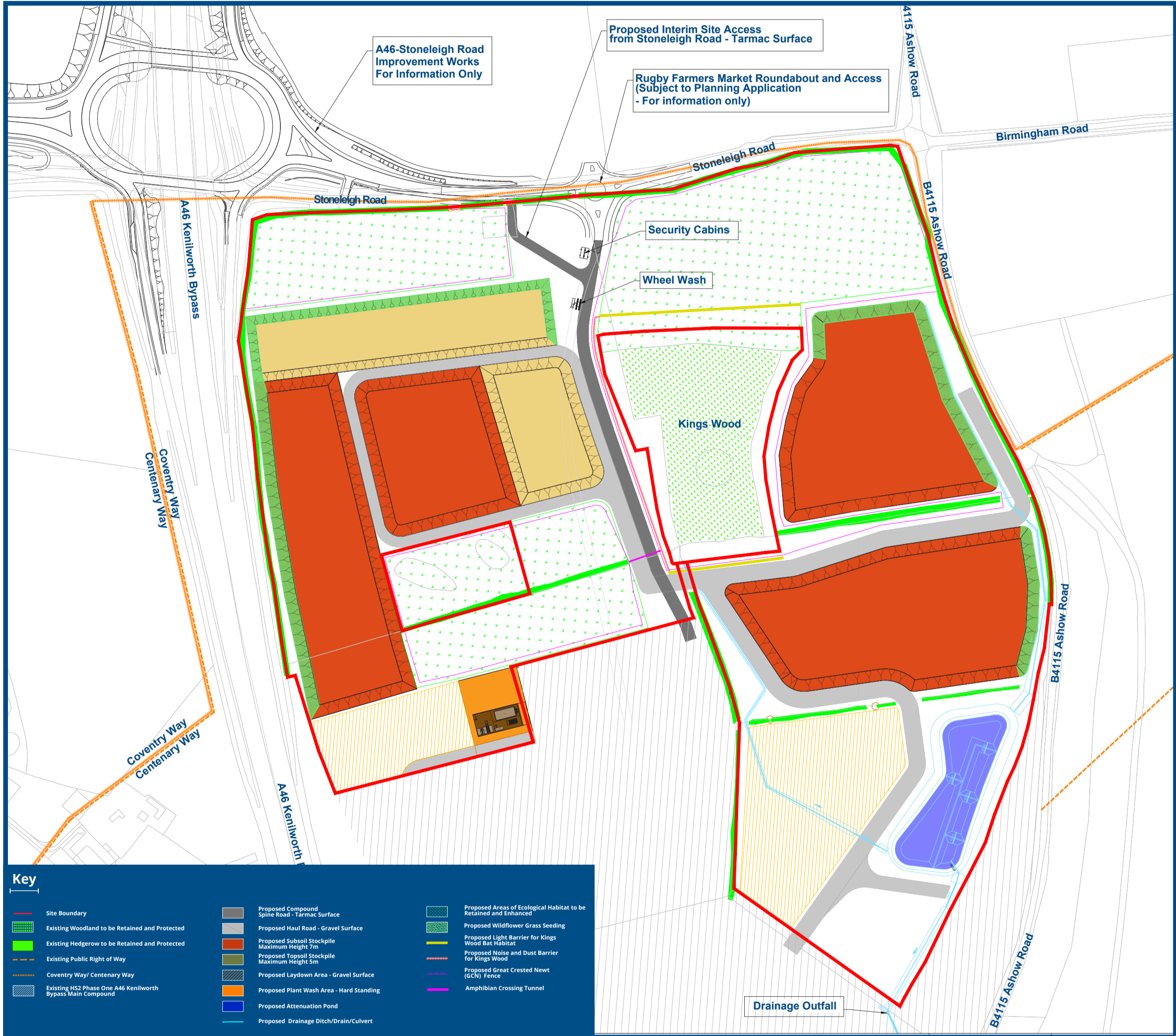
The site layout plan on this board shows what we are proposing to deliver in the new temporary site extension and where the works will be located.

In summary, our proposals include:

- Providing new site access off Stoneleigh Road
- Site clearance, including removal of some sections of hedgerow. The lost hedgerow will be replanted
- Soil stockpiles up to 7m high
- Storage for steel reinforcement, drainage and precast concrete

components

- Internal site access and haul roads
- Security cabins, wheel wash area and machinery wash area
- Attenuation pond and drainage
- Retaining and protecting existing woodland at Kings Wood and wildlife habitats



Illustrative plan showing the indicative layout for the A46 Kenilworth Bypass Main Compound temporary extension proposals

Traffic management

Our current A46 Kenilworth Bypass Main Compound includes office space, welfare facilities for our team and car parking.

Our proposals will significantly reduce HS2 construction vehicle movements on the B4115 Ashow road and help reduce movements on other local roads. We are proposing to do this by introducing a new access to the A46 Kenilworth Bypass Main Compound via the A46 Kenilworth Bypass and Stoneleigh Road. As a result, our construction vehicles will only travel a short distance on Stoneleigh Road and avoid using other local roads.

The new vehicle access point off Stoneleigh Road would mean vehicles enter and exit the site via a T-junction. We are aiming to replace this with a new roundabout, which is subject to a separate planning application.

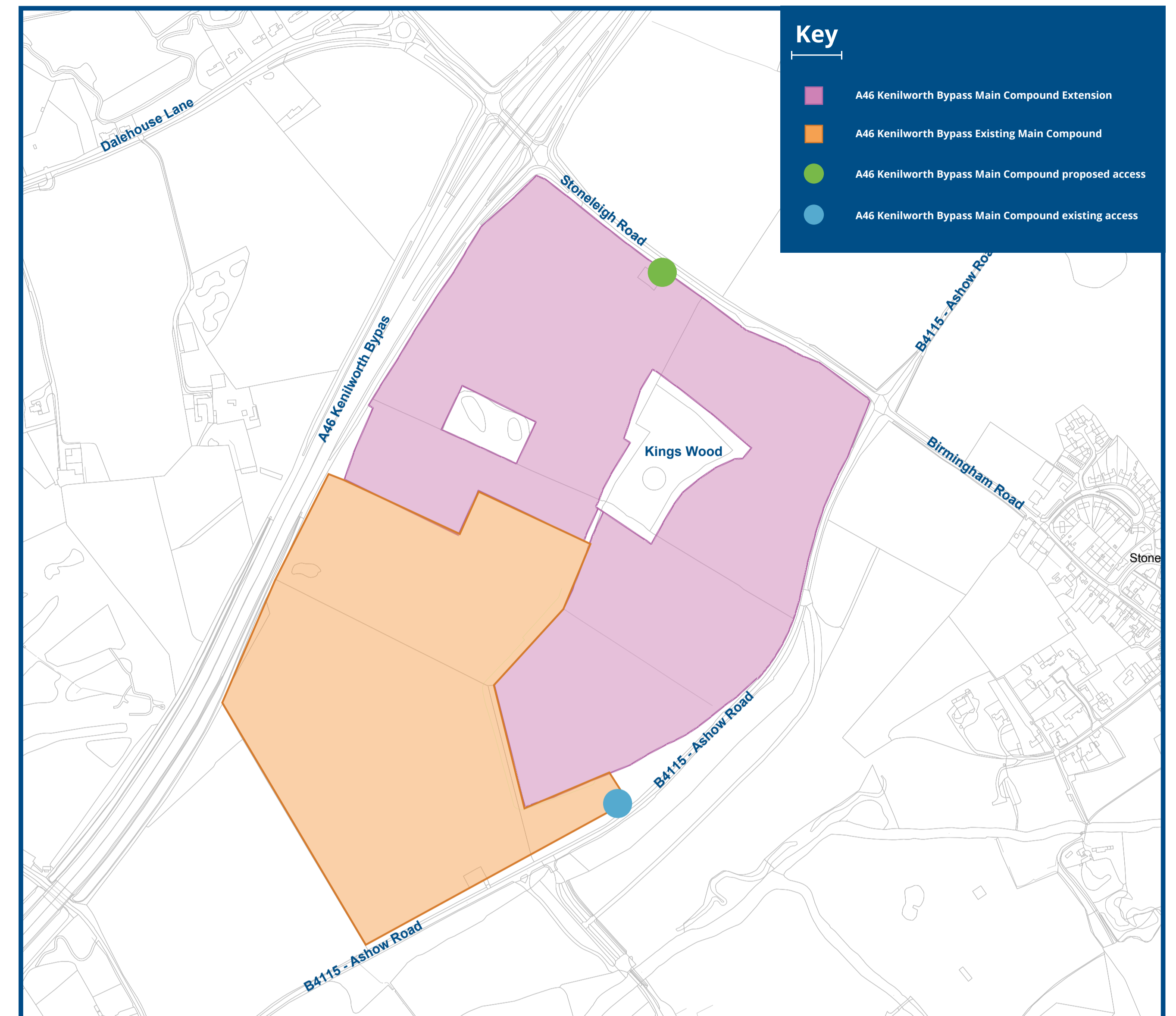
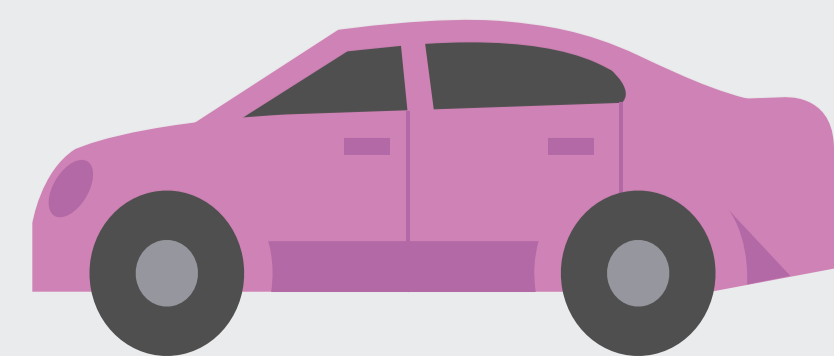


We are seeking feedback from you on whether you want less construction vehicle movements on the B4115 Ashow Road and at the crossroads with Birmingham Road and Stoneleigh Road.

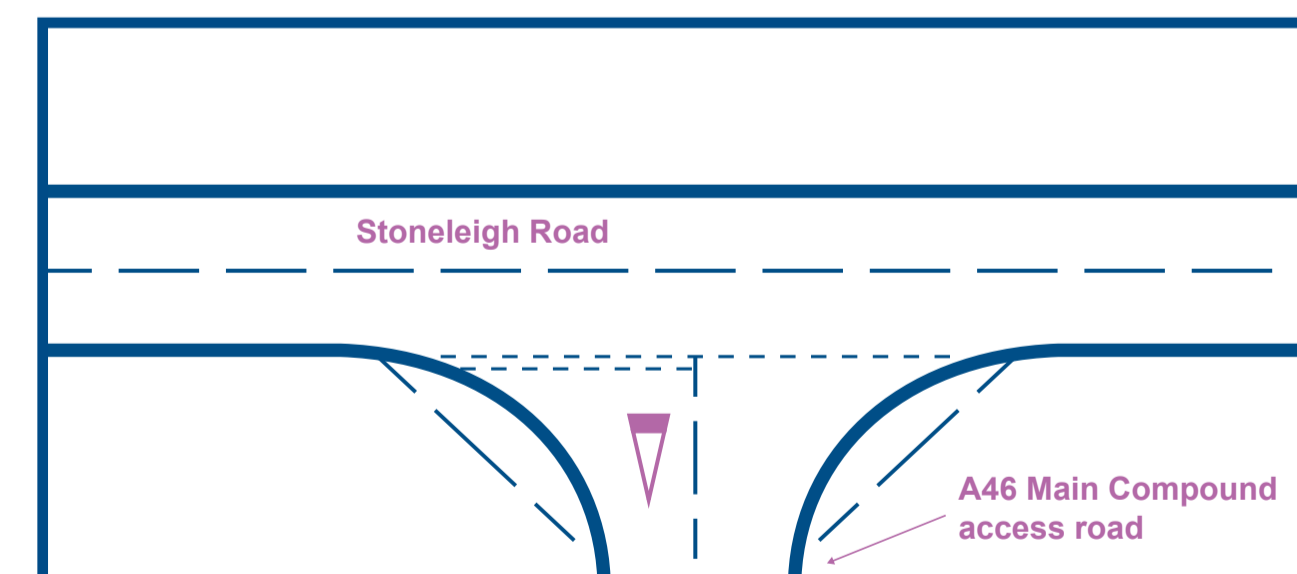
We are proposing to create extra storage space in the temporary compound extension to help us control and organise our construction vehicle movements.

In addition, our proposals include:

- Removing the existing compound vehicle access on the B4115 Ashow Road
- Heavy Goods Vehicles (HGVs) no longer using the B4115 Ashow Road and the B4115 crossroads with Stoneleigh Road and Birmingham Road
- Light Goods Vehicles (LGVs) and cars able to continue using the B4115 Ashow Road but they are anticipated to use the A46 Kenilworth Bypass and Stoneleigh Road to access the site instead



Map showing existing and proposed access to the A46 Kenilworth Bypass Main Compound



Indicative T-junction plan




Surfaced haul road in operation at the A46 Main Compound

Environment



We will support our planning application submission with an Environmental Impact Assessment to set out any required environmental mitigations. This will become publicly accessible once we submit the planning application.

We will carefully position our proposed soil stockpiles to ensure that they are as unobtrusive as possible. We are planning to use vegetation in the local landscape, including woodland, trees and hedgerows to help block views of our stockpiles.

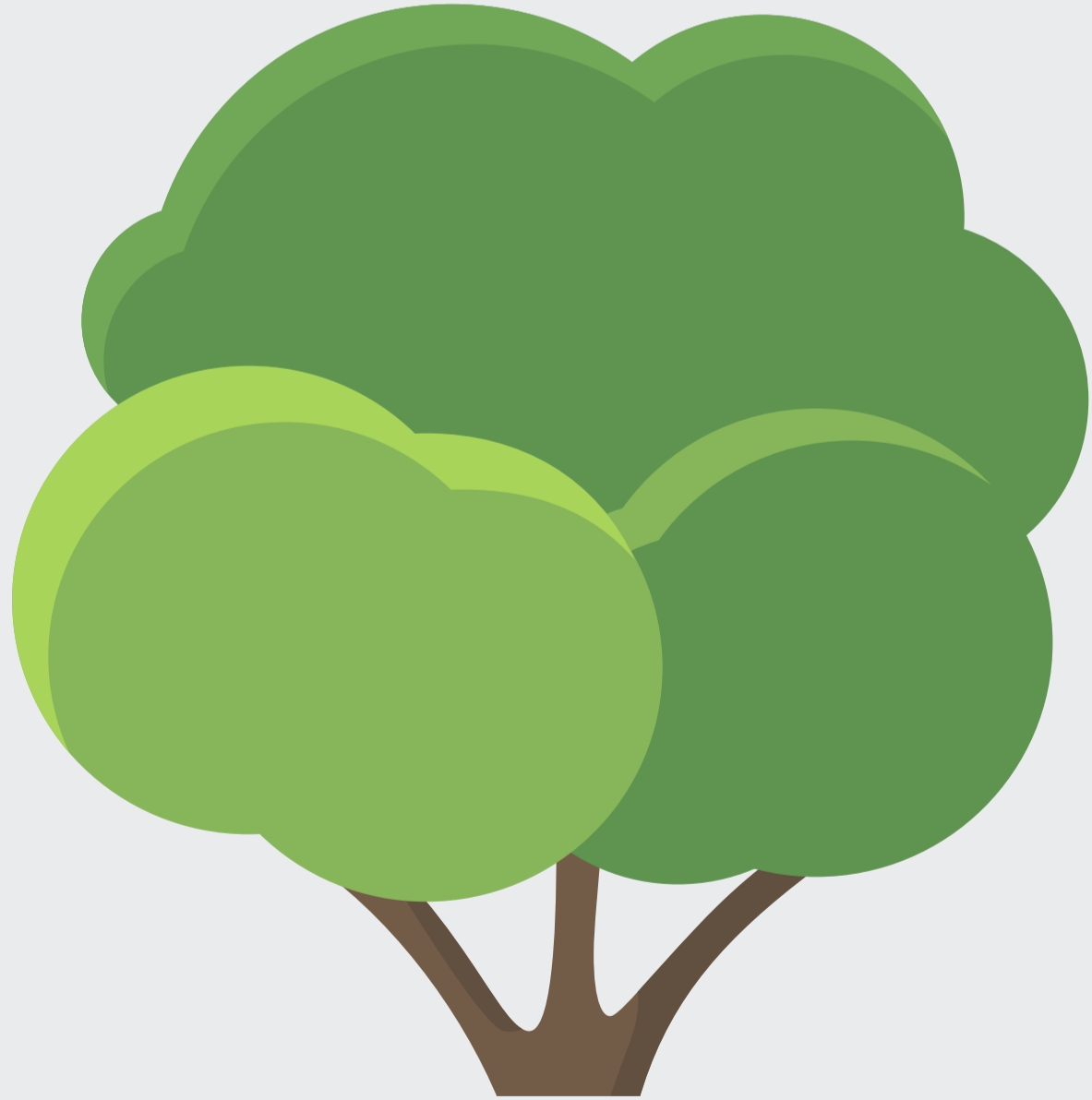
 For the visible edges of our soil stockpiles, we are asking for your views on whether you think the outer banks, facing out from our site, should be seeded with wildflowers to improve the look.

There is woodland next to our proposed site called Kings Wood. We are seeking your feedback on how to best retain and protect the wood.

Our proposals include:

- Protecting trees in Kings Wood and elsewhere on the site by keeping construction activity away from their root protection zone
- Implementing dust mitigation measures
- Installing a light barrier to protect bats that live in Kings Wood
- Seeding wildflowers on the edges of soil stockpiles to boost biodiversity during site operation
- Delivering newt fencing and an amphibian crossing to protect wildlife

We are proposing to maintain a green buffer zone between the extended A46 Kenilworth Bypass Main Compound and Stoneleigh Road to minimise impact on people using Stoneleigh Road and provide wildlife habitats during site operation.



Wildflower meadows like this are home to many different forms of wildlife and help to boost biodiversity



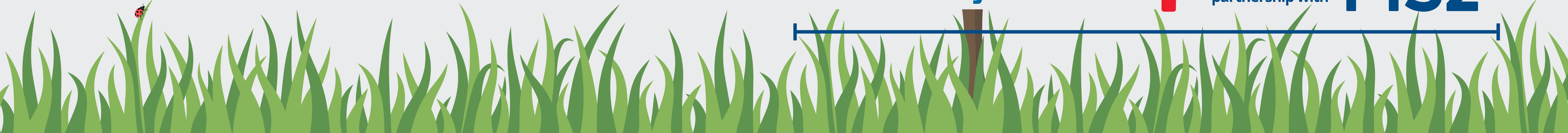
Local wildlife, including bats, newts and insects

Balfour Beatty

VINCI

Working in partnership with

HS2



Community benefits compared with our existing site operations



Our proposals aim to facilitate the next phase of construction to deliver the HS2 railway in this location and do it while reducing construction traffic on local roads and protecting the environment.

In summary, community benefits during the temporary works include:

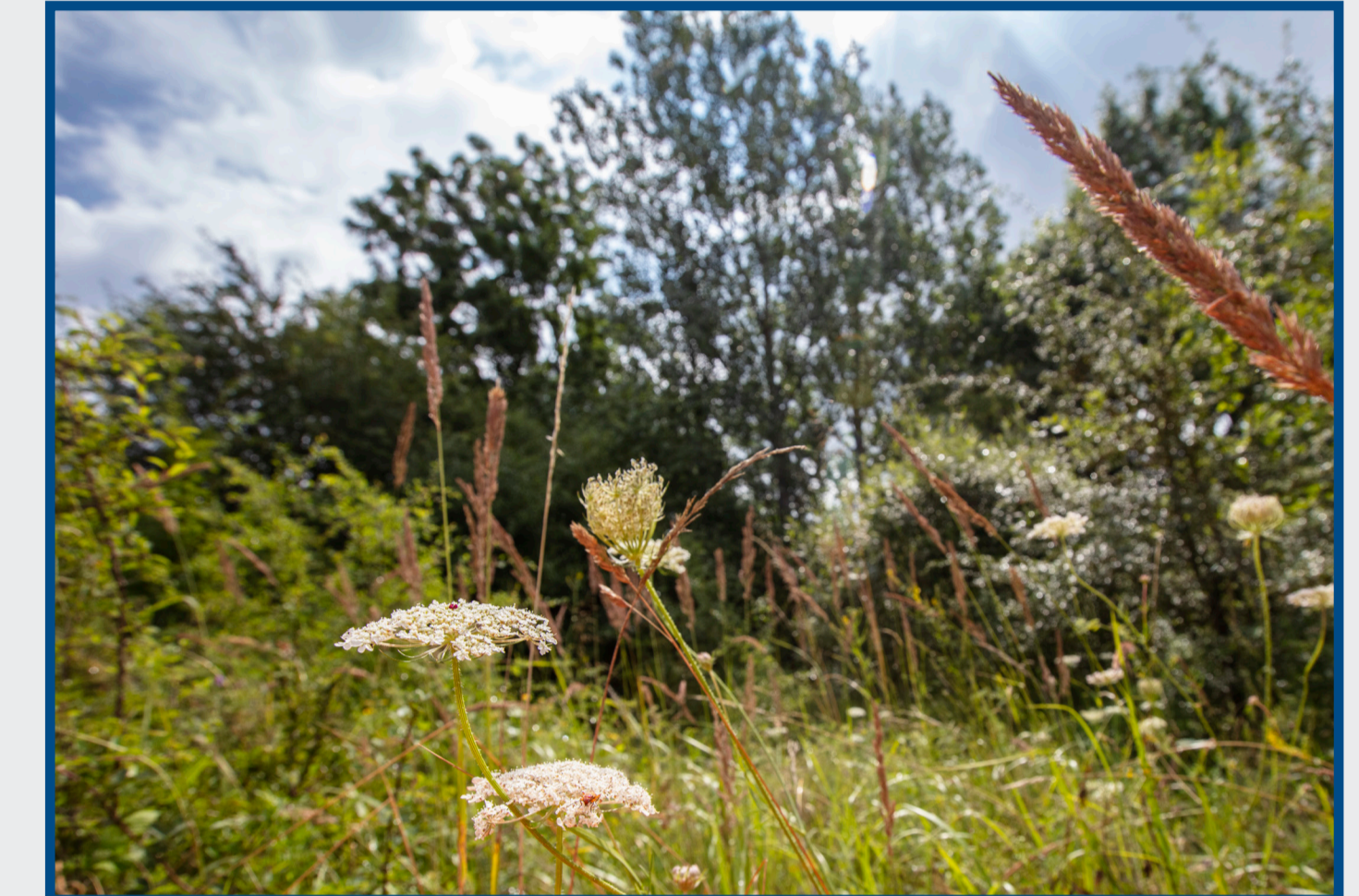
- Removing HGV construction vehicles from the B4115 Ashow Road
- Improving our organisation and control of construction vehicle movements by creating extra storage space, so that we minimise traffic disruption
- Retaining and protecting Kings Wood
- Boosting biodiversity by seeding wildflowers

We are committed to being responsible builders. Our proposals to meet this standard includes:

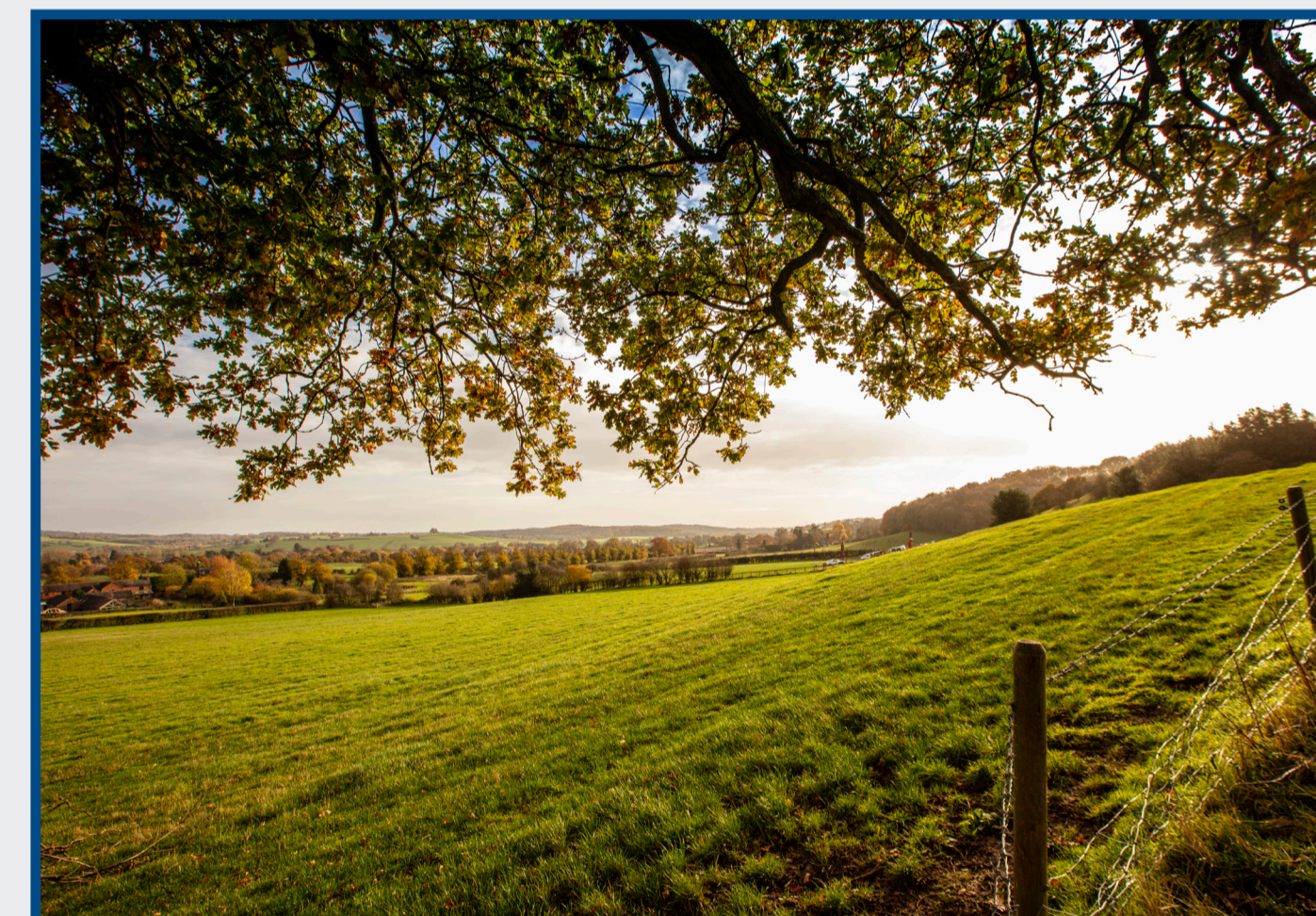
- Maintaining a green buffer zone along Stoneleigh Road and seeding wildflowers on the outer banks of soil stockpiles
- Washing wheels on our construction vehicles before they leave site to make sure they track less mud and dust on local roads
- Restoring the land to its former use after we decommission the compound



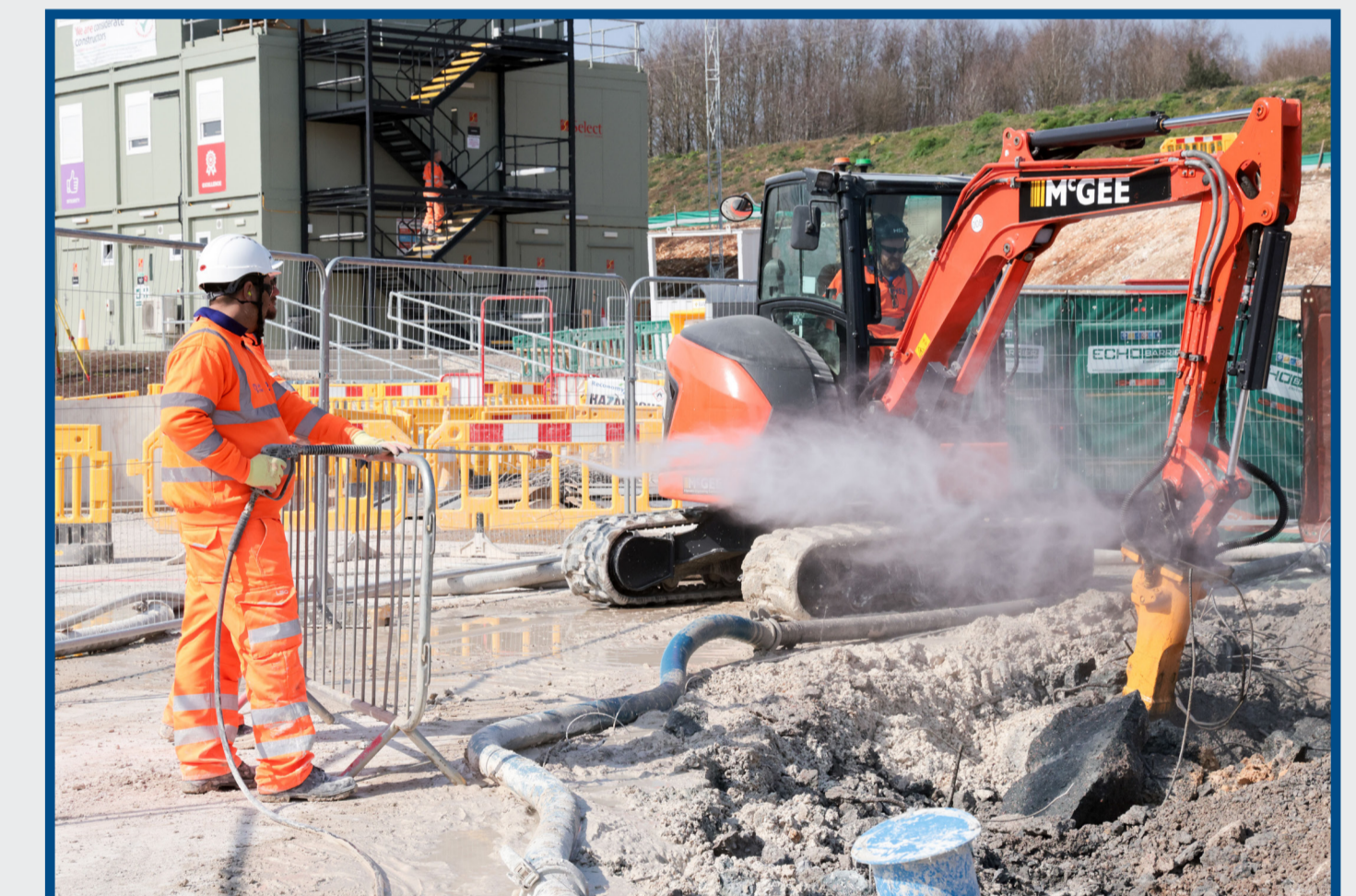
Our proposals will reduce construction traffic on the B4115 Ashow Road and other local roads



Wildflower meadows like this are home to many different forms of wildlife and help to boost biodiversity



Indicative image of what our site could look like when it is reinstated to agricultural land



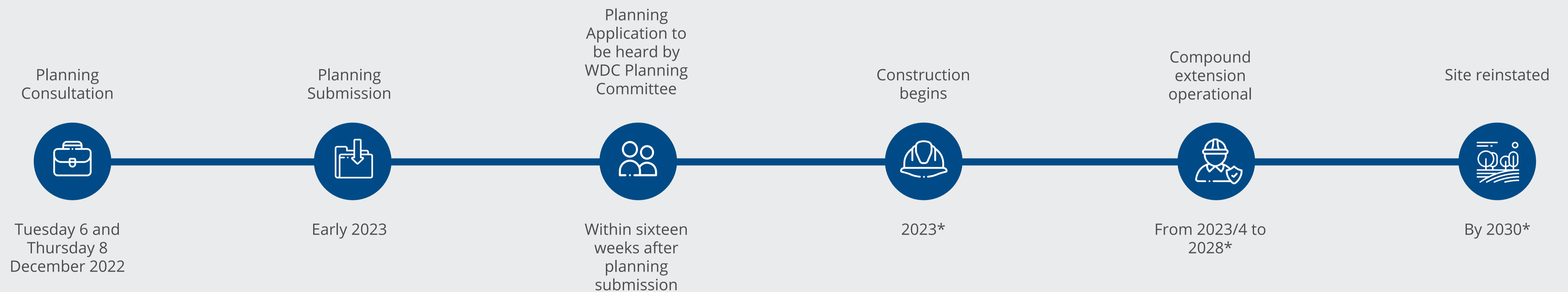
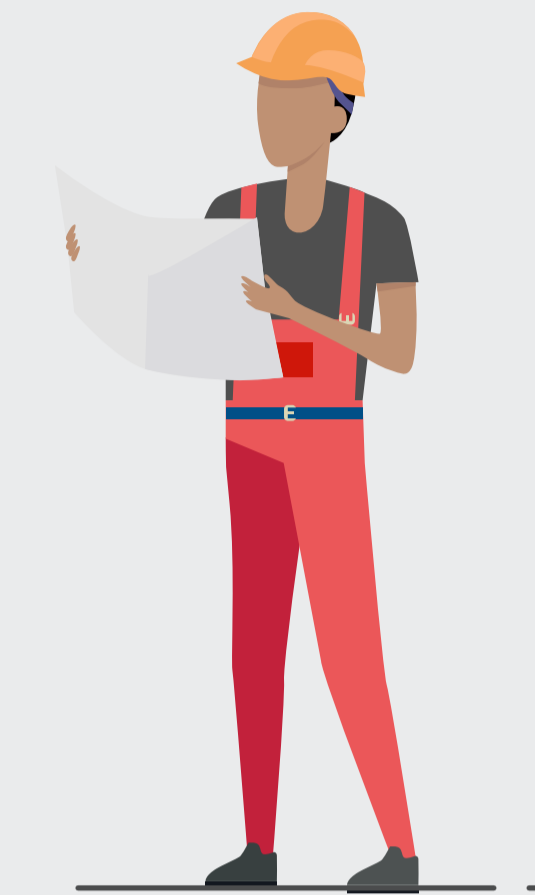
Cleaning our construction vehicles to keep mud and dust off local roads



Timeline and next steps



The timeline shows you when we expect to deliver and operate the compound expansion, and when we reinstate it. The timings are indicative and may be subject to change.



*Subject to planning approval



Construction management



We always aim to be a considerate constructor and respect people, respect places. Our working hours will be from 8am to 6pm from Monday to Friday, excluding bank holidays, and 8am to 1pm on Saturday. We will agree on any work outside these hours with Warwick District Council.

Noise and dust

We continuously monitor noise and dust levels at our sites where people could be disturbed by construction. In line with best practice, our noise and dust monitors have set trigger alerts, which provide real-time feedback to us, allowing us to respond quickly to exceedances wherever and whenever they occur.

We implement a range of dust mitigation techniques while carrying out earthworks and transporting spoil away from sites.

Mud on the road

We have measures in place to prevent mud being tracked from our sites onto local roads:

- We have “rumble strips” in our sites to help dislodge some of the loose mud stuck to our vehicles
- Our vehicles always pass through a wheel wash before leaving the site to remove mud



We want to hear from you



Please provide your views on our proposals by completing a feedback form.

We will be making all the public consultation materials available online and we can provide physical copies if needed.

You will be able to formally submit your views to Warwick District Council after our planning application is registered.

Visit our website:



<https://www.hs2.org.uk/in-your-area/local-community-webpages/hs2-in-warwickshire/a46-kenilworth-bypass-main-compound/>



Following the public exhibition, we will consider and incorporate your ideas into our designs where we can.

We will also prepare and submit a Statement of Community Involvement with the planning application to demonstrate how we have consulted you and responded to your feedback.

