

# Overnight utilities work on Oldfield Lane North, Greenford

March 2023 | [www.hs2.org.uk](http://www.hs2.org.uk)

High Speed Two (HS2) is the new high speed railway for Britain.

You can sign up for regular updates in Brent and Ealing at

[www.hs2.org.uk/in-your-area/local-community-webpages/hs2-in-brent-and-ealing](http://www.hs2.org.uk/in-your-area/local-community-webpages/hs2-in-brent-and-ealing)

## What we are doing

**From 11 April to 10 May 2023**, we will be carrying out the main sewer protection works on Oldfield Lane North. **This work will be carried out over night between 7pm and 7am.** The main sewer protection works consist of relining the foul and surface sewer network and replacing maintenance covers. Work will take place in four phases:

### Phase 1

11 and 12 April - Compound set up on Uneeda Drive during core hours 8am to 6pm.

13 to 17 April - Install pipe lining, opposite Greenford Station 7pm to 7am. Road closed from Station, under bridge to Rockware Avenue.

### Phase 2

20 to 24 April - Install pipe lining under bridge between Greenford Station and Rockware Avenue 7pm to 7am

### Phase 3

27 to 30 April - Install pipe lining from Bridge past Rockware Avenue 7pm to 7am

### Phase 4

4 to 7 May April - Install pipe lining from Bridge past Rockware Avenue 7pm to 7am

9 and 10 May - Demobilisation of compound on Uneeda Drive during core hours 8am to 6pm.

**If you have a question about HS2 or our works, please contact our HS2 Helpdesk team on 08081 434 434 or email [hs2enquiries@hs2.org.uk](mailto:hs2enquiries@hs2.org.uk)**

## Notification



### Duration of works

11 April to 10 May 2023

7pm to 7am Thursday to Monday only

We may be on site for an hour before the start and/or end of each shift

### What to expect

Road closure on Uneeda Drive junction with Oldfield Lane North

Temporary traffic management and lane closure on Oldfield Lane North and Rockware Avenue

Pedestrian access will be maintained

### What we will do

Maintain access to properties and businesses at all times

Provide updates at [HS2inBrentandEaling.org.uk](http://HS2inBrentandEaling.org.uk)

# Overnight utilities work on Oldfield Lane North, Greenford

Notification



[www.hs2.org.uk](http://www.hs2.org.uk)

## How these works will affect you

We will be using water tankers during the works, should we need to flush the sewer system. However, your utility services will not be affected.

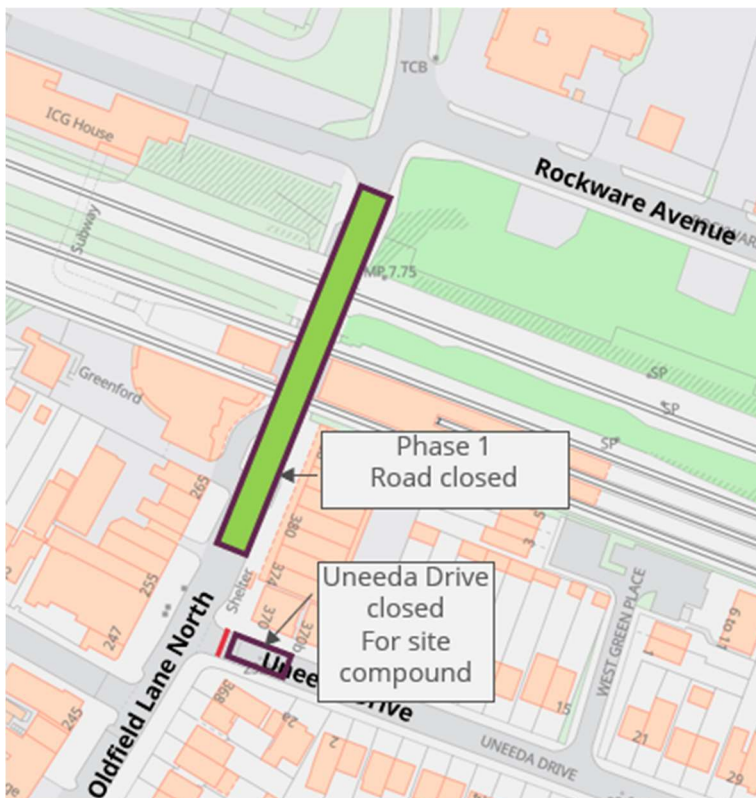
We will set up a site compound at the junction of Uneeda Drive with Oldfield Lane North on Tuesday 11 April from 8am to 6pm. Due to the location of our site welfare, we will close the road at Uneeda Drive on the junction off Oldfield Lane North for the duration of the works. There will be a clearly signed diversion route via Greenford Road, Ingham Drive and Oldfield Lane North.

Temporary traffic management, parking bay suspensions and a road closures will be in place to ensure the works can be carried out safely. Oldfield Lane North will be closed from Rockware Avenue, to just north of the Railway Hotel during the night of the works. Traffic will be diverted via Greenford Road and Berkley Avenue.

We would like to apologise in advance for the disruption or inconvenience this may cause. Every effort is being taken to ensure that these works are carried out in the least impactful way. We will ensure that disruption is kept to a minimum.

## Approximate locations of utilities works

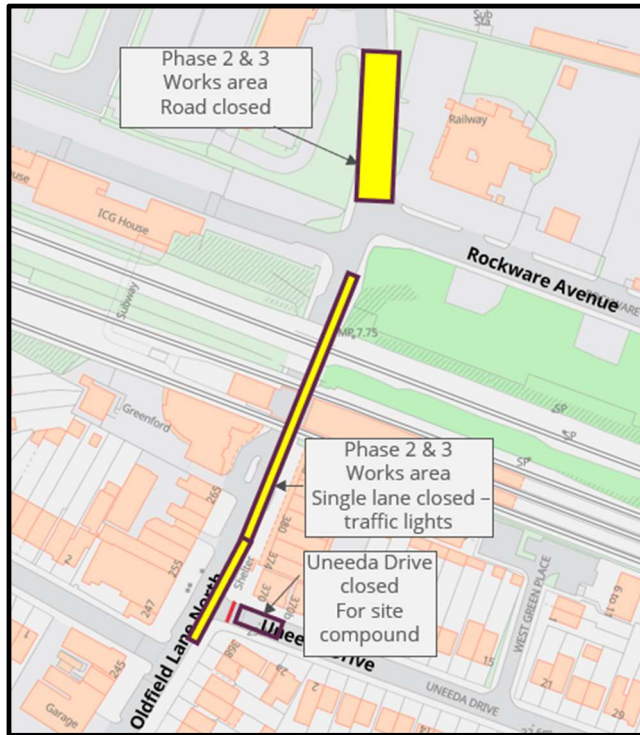
### Phase 1 – 11 to 17 April



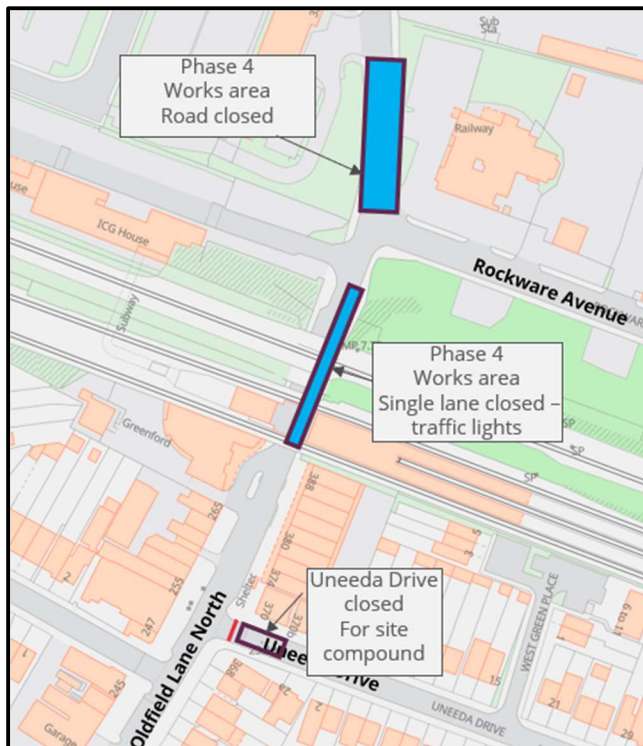
Contact our HS2 Helpdesk team on **08081 434 434**

# Notice of night time utilities work on Oldfield Lane North, Greenford

Phase 2 & 3 – 20 to 30 April



Phase 4 – 4 to 10 May



Contact our HS2 Helpdesk team on **08081 434 434**

# Keeping you informed

We are committed to keeping you informed about work on HS2. This includes ensuring you know what to expect and when to expect it, as well as how we can help you.

## The Residents' Commissioner

The independent Residents' Commissioner oversees and monitors our commitments to you.

The commissioner's reports and our responses can be found at [www.gov.uk/government/collections/hs2-ltd-residents-commissioner](http://www.gov.uk/government/collections/hs2-ltd-residents-commissioner)

The Residents' Commissioner makes sure we fulfil the commitments in the HS2 Community Engagement Strategy (<https://bit.ly/3oOA25j>).

The Residents' Commissioner can be contacted on: [residentscommissioner@hs2.org.uk](mailto:residentscommissioner@hs2.org.uk)

## Construction Commissioner

The independent Construction Commissioner regularly meets our Chief Executive Officer to raise any concerns or emerging trends across HS2.

The Construction Commissioner's role has been developed to monitor the way we manage and respond to construction complaints.

The commissioner mediates on disputes about construction, involving individuals and organisations, that we can't resolve. The commissioner advises members of the public about how to make a complaint about construction.

The Construction Commissioner can be contacted on: [complaints@hs2-cc.org.uk](mailto:complaints@hs2-cc.org.uk)

## Property and compensation

You can find out about HS2 and properties along the route by visiting:

[www.gov.uk/government/collections/hs2-property](http://www.gov.uk/government/collections/hs2-property)

Find out if you can claim compensation at:

[www.gov.uk/claim-compensation-if-affected-by-hs2](http://www.gov.uk/claim-compensation-if-affected-by-hs2)


## Holding us to account

If you are unhappy for any reason you can make a complaint by contacting the HS2 Helpdesk. For more details on our complaints process, please visit: [www.hs2.org.uk/in-your-area/contact-us/how-to-complain/](http://www.hs2.org.uk/in-your-area/contact-us/how-to-complain/)

## Contact us

Contact our HS2 Helpdesk team all day, every day of the year on:

 Freephone **08081 434 434**

 Minicom **08081 456 472**

 Email **[HS2enquiries@hs2.org.uk](mailto:HS2enquiries@hs2.org.uk)**

Write to:

**FREEPOST**

**HS2 Community Engagement**

Website **[www.hs2.org.uk](http://www.hs2.org.uk)**

To keep up to date with what is happening in your local area, visit: **[www.HS2inyourarea.co.uk](http://www.HS2inyourarea.co.uk)**

**Please contact us if you'd like a free copy of this document in large print, Braille, audio or 'easy read' format. You can also contact us for help and information in a different language.**

HS2 Ltd is committed to protecting personal information. If you wish to know more about how we use your personal information please see our Privacy Notice: <https://www.gov.uk/government/publications/high-speed-two-ltd-privacy-notice>

**Reference number: HS2-EW-SCS-Ph1-Ar-So-S2-UT-1-27/03/2023**

High Speed Two (HS2) Limited, registered in England and Wales.

Registered office: Two Snowhill, Snow Hill Queensway, Birmingham B4 6GA.

Company registration number: 06791686. VAT registration number: 888 8512 56