

Notice of ground survey works in support of pipeline diversion – Den Lane.

February 2023 | www.hs2.org.uk

Notification



High Speed Two (HS2) is the new high speed railway for Britain. To allow for the construction of the new railway and to continue to ensure a safe and reliable fuel supply to the Manchester Fuel Network, Mainline Pipelines Limited will be commencing Ground Investigation surveys in March 2023.

What are we doing?

Mainline Pipelines Limited will be undertaking ground intrusive investigation works in order to carry out their fuel main diversion.

Works will be carried out within land adjacent to Den Lane.

To carry out the work safely, signs will be situated temporarily on Den Lane in the area shown on the map below.

The work is planned to take place on **Wednesday 1 to Friday 31 March 2023**. All the work will be undertaken between 8am and 4 pm.

How will this affect you?

We will be using two vehicles to transport the excavator and drill rig to the site compound off Den Lane. Internal farm tracks off Den Lane will be used to access the various fields and to minimise the use of the surrounding lanes.

We do not anticipate our traffic movements to have any significant impact on the local road network. The plan below shows the extent and position of the work boundaries as well as the access routes being used off Den Lane.

If you have a question about HS2 or our works, please contact our helpdesk on 08081 434 434 or email HS2enquiries@hs2.org.uk

Duration

- Wednesday 1 to Friday 31 March 2023
- Our working hours will be 8am to 4pm

What to expect

- Signage on the roadside where we access our worksite.
- Heras fencing panels where trial pits and boreholes are being dug/drilled in the fields.

What we will do

- Limit the amount of vehicle movements
- Make sure all survey vehicles use agreed routes
- Maintain a safe working environment
- Inform people in advance of any changes

Location of work boundaries and access

- Access
- Field boundary working within

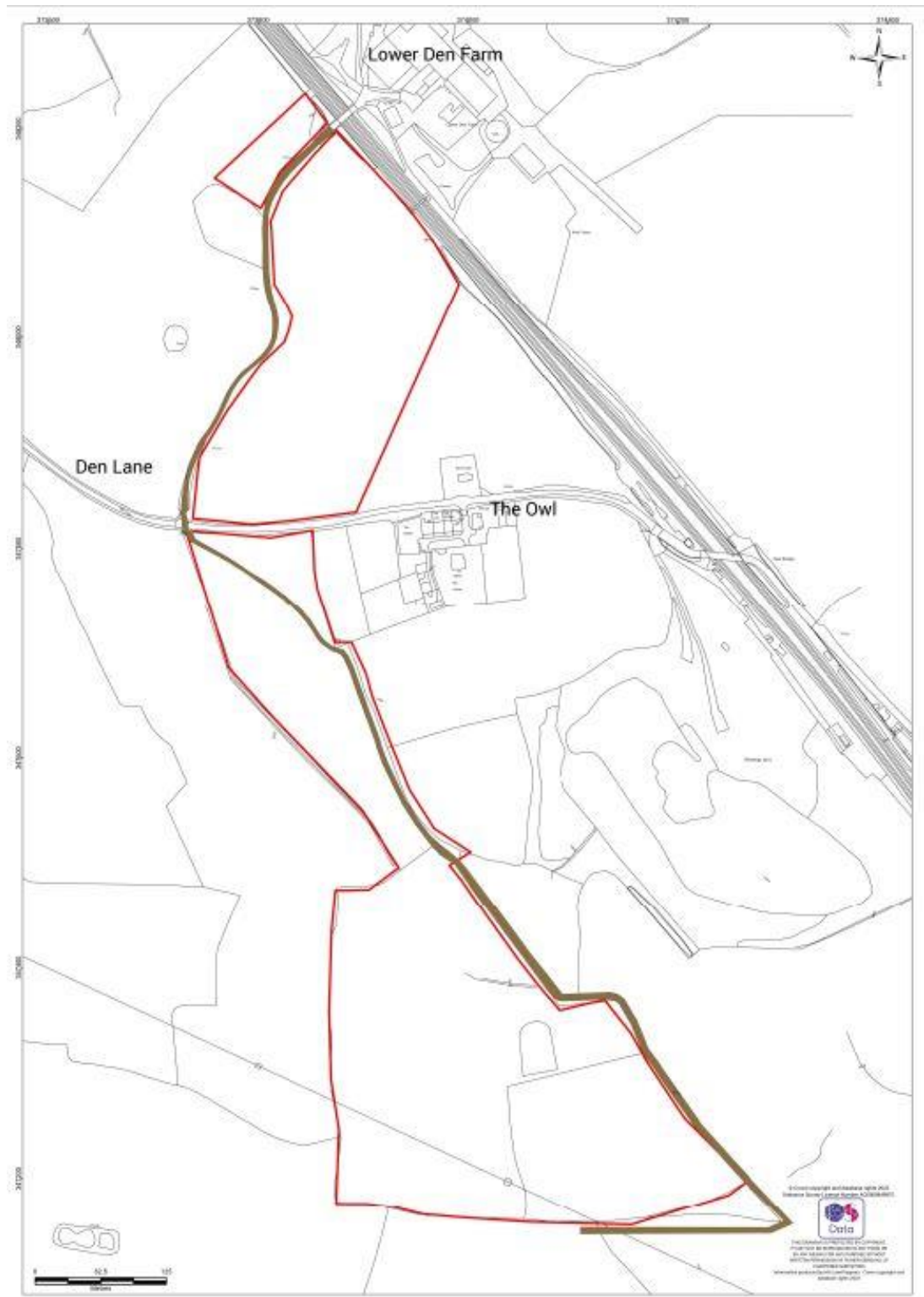


Fig 1 Worksites and access off Den Lane

24/7 Community Freephone Helpline **08081 434 434**

What else is happening in your area?

www.hs2.org.uk

About our Community and Business Funds

We are offering two funds that are available to local communities and businesses between Birmingham and the West Midlands, to help with the disruption caused by our construction work. These are the Community and Environment Fund (CEF) and the Business and Local Economy Fund (BLEF).

The CEF is designed to give communities the opportunity to share in the benefits of HS2. It is an allocated fund that communities are able to apply for, to help to support local projects that aim to improve their local area.

The BLEF is designed to support local economies that may be disrupted by the construction of HS2. BLEF grants are for local business support organisations and local authorities to help maintain business activity in local communities.

For more information about each of these funds, including how to apply, please visit: <https://www.groundwork.org.uk/hs2funds>



About our Commonplace websites

The planning and construction of HS2 is a huge operation – it is currently the largest infrastructure project in Europe.

It's important to us that you are kept up to date about the progress of the Project and any work that may impact you or your community. We have a series of community-focused websites where you can find out what is happening in your local area and sign up for updates about our activities.

Our Commonplace sites currently serve Birmingham, Bucks and Oxfordshire, Cheshire, Euston and Camden, Hertfordshire, Hillingdon, Northamptonshire, Old Oak, Solihull, Staffordshire and Warwickshire. More sites are being prepared to serve other areas.

To find your local Commonplace website, visit:
<https://hs2.commonplace.is/>

For further information about Phase 2a and Phase 2b, visit:
<https://www.gov.uk/government/organisations/high-speed-two-limited>



24/7 Community Freephone Helpline **08081 434 434**

Keeping you informed

We are committed to keeping you informed about work on HS2. This includes ensuring you know what to expect and when to expect it, as well as how we can help.

Residents' Charter and Commissioner

The Residents' Charter is our promise to communicate as clearly as we possibly can with people who live along or near the HS2 route.

www.gov.uk/government/publications/hs2-residents-charter

We also have an independent Residents' Commissioner whose job is to make sure we keep to the promises we make in the Charter and to keep it under constant review. Find reports at: www.gov.uk/government/collections/hs2-ltd-residents-commissioner

You can contact the Commissioner at: residentscommissioner@hs2.org.uk

Construction Commissioner

The Construction Commissioner's role is to mediate and monitor the way in which HS2 Ltd manages and responds to construction complaints. You can contact the Construction Commissioner by emailing: complaints@hs2-cc.org.uk

Property and compensation

You can find out all about HS2 and properties along the line of route by visiting:

www.gov.uk/government/collections/hs2-property

Find out if you're eligible for compensation at: www.gov.uk/claim-compensation-if-affected-by-hs2

Holding us to account

If you are unhappy for any reason you can make a complaint via the helpline. For more details on our complaints process, please visit our website: www.hs2.org.uk/how-to-complain

Contact Us

If you have any questions about this notification of works, please get in touch.



24/7 Freephone **08081 434 434**



Minicom **08081 456 472**



Email **HS2enquiries@hs2.org.uk**

Write to:

FREEPOST

HS2 Community Engagement

Website **www.hs2.org.uk**

To keep up to date with what is happening in your local area, visit: **www.hs2.commonplace.is**

Please contact us if you'd like a free copy of this document in large print, Braille, audio or easy read. You can also contact us for help and information in a different language.

HS2 Ltd is committed to protecting personal information. If you wish to know more about how we use your personal information please see our Privacy Notice

<https://www.gov.uk/government/publications/high-speed-two-ltd-privacy-notice>

Helpdesk reference: HS2-MW-BBV-Ph1-Ar-Ph1-Ar-No-N1-Prog-works-50-08/02/2023

High Speed Two (HS2) Limited, registered in England and Wales.

Registered office: Two Snowhill, Snow Hill Queensway, Birmingham B4 6GA.

Company registration number: 06791686. VAT registration number: 181 4312 30.