

SKANSKA



STRABAG

Working in  
partnership with

HS2

## Notification



# West End Road night-time bridge monitoring equipment installation

High Speed Two (HS2) is the new high speed railway for Britain.

### HS2 & SCSJV information hub

The community information hub is now open for drop-ins on **Mondays** and **Wednesdays** from **2pm** to **4pm**.

Our community engagement team is available to answer your questions about the project and our works in Hillingdon and Northolt.

You can find us in the portacabin on the right of the West Ruislip Portal Site entrance on Ickenham Road.

You can sign up for regular updates in your local area at [hs2inhilligdon.co.uk](https://hs2inhilligdon.co.uk).

## What we are doing

In advance of tunnelling works nearby, it is necessary to monitor the West End Road bridge. Starting on 27 February until 2 March, we will be installing monitoring prisms on the underside of the railway bridge near to the Bedford Road junction. As the prisms need to be installed at height, we will use a 'cherry picker' (mobile elevated working platform) within the work areas shown on the map overleaf. We will be using a small drill to make a hole and then a hammer to knock the monitoring prism in place. Any noise will be minimal and very brief.

## How these works might affect you

Temporary traffic management and pedestrian crossings will be in place to ensure that we carry out the works safely.

We would like to apologise in advance for the disruption or inconvenience this may cause. Every effort is being taken to ensure that these works are carried out in the least impactful way. We will ensure that disruption is kept to a minimum.

**If you have a question about HS2 or our works, please contact our HS2 Helpdesk team on 08081 434 434 or email [hs2enquiries@hs2.org.uk](mailto:hs2enquiries@hs2.org.uk)**

### Duration of works

27 February to 2 March

Overnight Monday to Thursday 10pm to 5am

### What to expect

Single lane closures and temporary traffic management

Pedestrian footpath diversion and temporary crossings

Parking bay suspensions

### What we will do

Maintain access to local shops and properties

Keep disruption a minimum

Provide updates at **[HS2inHillingdon.co.uk](https://hs2inhilligdon.co.uk)**

Call our HS2 Helpdesk team on **08081 434 434**

# West End Road night-time bridge monitoring equipment installation

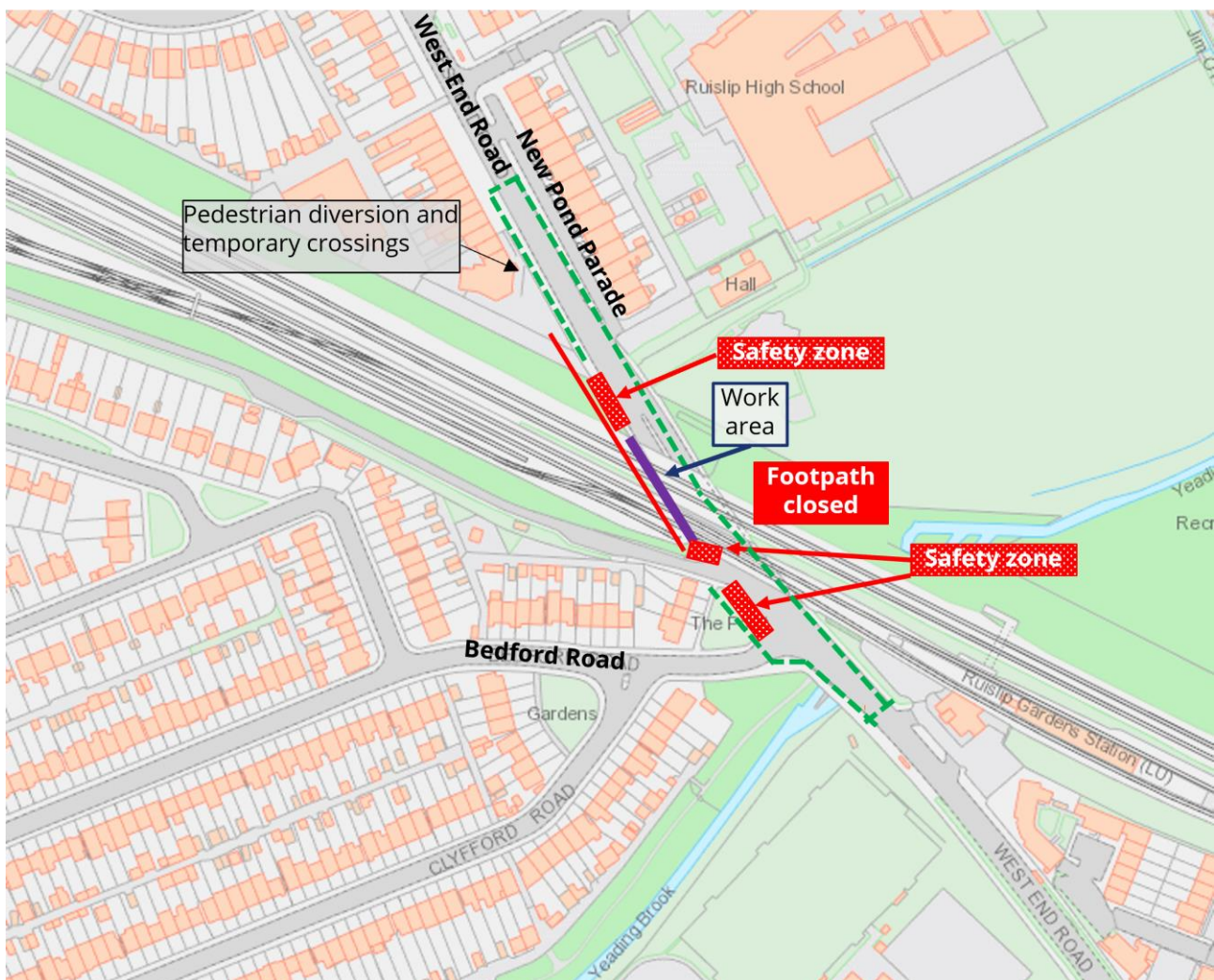
[www.hs2.org.uk](http://www.hs2.org.uk)

Notification



## Approximate location of works

Monday 27 and Tuesday 28 February 10pm to 5am



Contact our HS2 Helpdesk team on **08081 434 434**

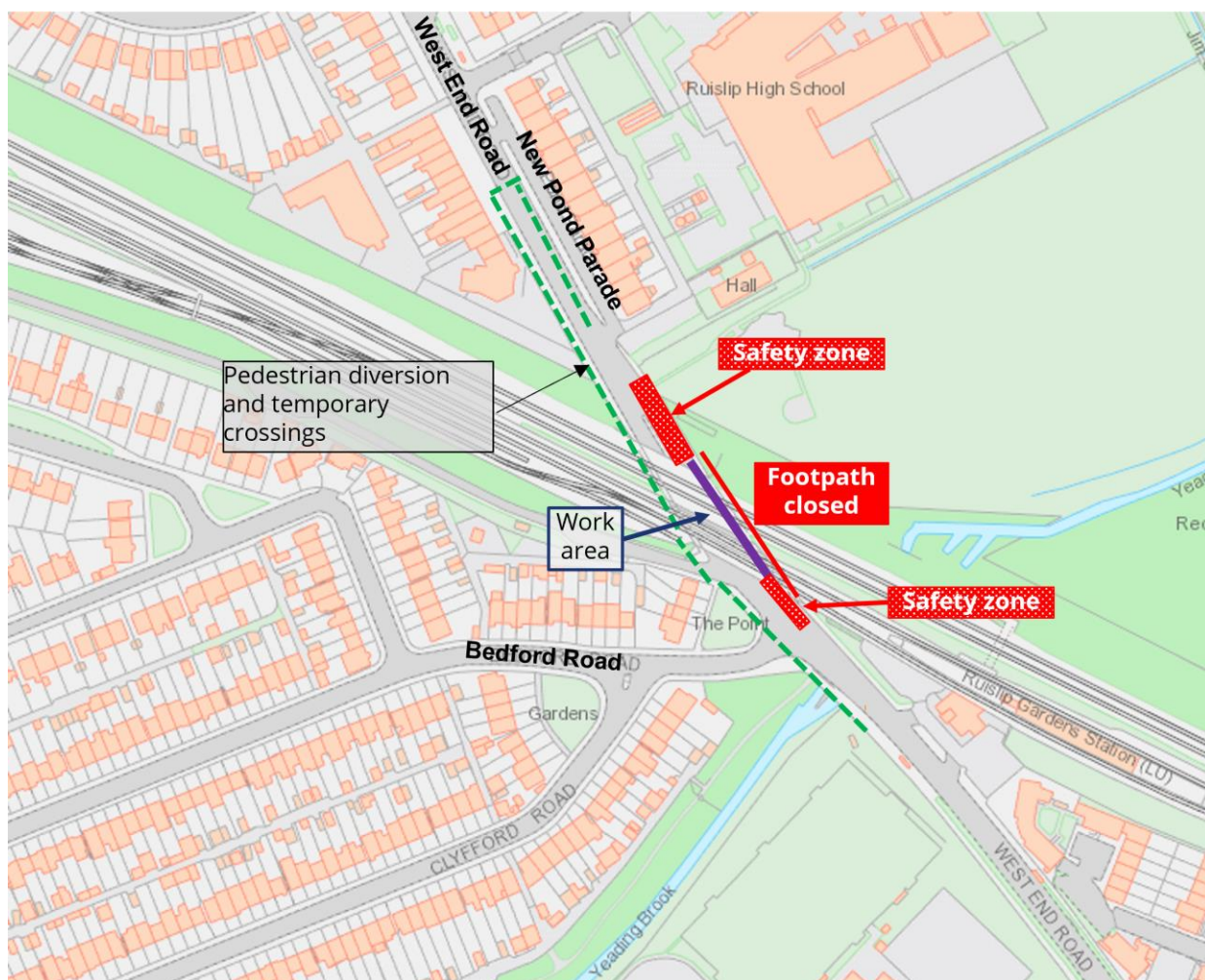
# West End Road night-time bridge monitoring equipment installation

[www.hs2.org.uk](http://www.hs2.org.uk)

## Approximate location of works

Wednesday 1 and Thursday 2 March 10pm to 5am

Notification



Contact our HS2 Helpdesk team on **08081 434 434**



# Keeping you informed

We are committed to keeping you informed about work on HS2. This includes ensuring you know what to expect and when to expect it, as well as how we can help you.

## The Residents' Commissioner

The independent Residents' Commissioner oversees and monitors our commitments to you.

The commissioner's reports and our responses can be found at [www.gov.uk/government/collections/hs2-ltd-residents-commissioner](http://www.gov.uk/government/collections/hs2-ltd-residents-commissioner)

The Residents' Commissioner makes sure we fulfil the commitments in the HS2 Community Engagement Strategy (<https://bit.ly/3oOA25j>).

The Residents' Commissioner can be contacted on: [residentscommissioner@hs2.org.uk](mailto:residentscommissioner@hs2.org.uk)

## Construction Commissioner

The independent Construction Commissioner regularly meets our Chief Executive Officer to raise any concerns or emerging trends across HS2.

The Construction Commissioner's role has been developed to monitor the way we manage and respond to construction complaints.

The commissioner mediates on disputes about construction, involving individuals and organisations, that we can't resolve. The commissioner advises members of the public about how to make a complaint about construction.

The Construction Commissioner can be contacted on: [complaints@hs2-cc.org.uk](mailto:complaints@hs2-cc.org.uk)

## Property and compensation

You can find out about HS2 and properties along the route by visiting:

[www.gov.uk/government/collections/hs2-property](http://www.gov.uk/government/collections/hs2-property)

Find out if you can claim compensation at:

[www.gov.uk/claim-compensation-if-affected-by-hs2](http://www.gov.uk/claim-compensation-if-affected-by-hs2)

## Holding us to account

If you are unhappy for any reason you can make a complaint by contacting the HS2 Helpdesk. For more details on our complaints process, please visit:

[www.hs2.org.uk/in-your-area/contact-us/how-to-complain/](http://www.hs2.org.uk/in-your-area/contact-us/how-to-complain/)

**Reference number: HS2-EW-SCS-Ph1-Ar-So-S2-Prog-works-1-08/02/2023**

High Speed Two (HS2) Limited, registered in England and Wales.

Registered office: Two Snowhill, Snow Hill Queensway, Birmingham B4 6GA.

Company registration number: 06791686. VAT registration number: 888 8512 56

## Contact us

Contact our HS2 Helpdesk team all day, every day of the year on:

 Freephone **08081 434 434**

 Minicom **08081 456 472**

 Email **HS2enquiries@hs2.org.uk**

Write to:

**FREEPOST**

**HS2 Community Engagement**

Website **[www.hs2.org.uk](http://www.hs2.org.uk)**

To keep up to date with what is happening in your local area, visit:  
**[www.HS2inyourarea.co.uk](http://www.HS2inyourarea.co.uk)**

**Please contact us if you'd like a free copy of this document in large print, Braille, audio or 'easy read' format. You can also contact us for help and information in a different language.**

HS2 Ltd is committed to protecting personal information. If you wish to know more about how we use your personal information please see our Privacy Notice:

<https://www.gov.uk/government/publications/high-speed-two-ltd-privacy-notice>