

Notification of traffic management on Gilson Drive, Coleshill

January 2023 | www.hs2.org.uk

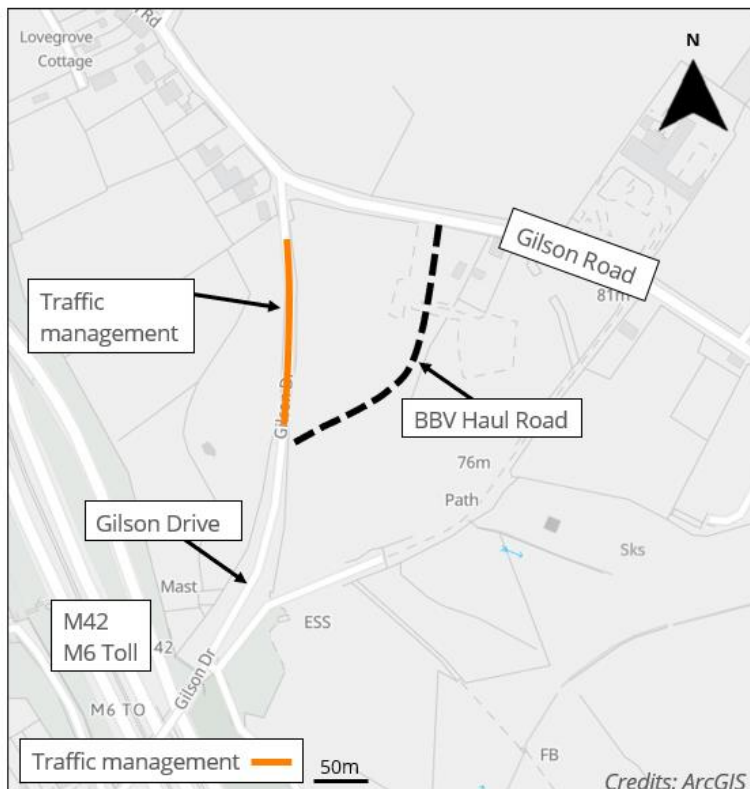
High Speed Two (HS2) is the new high speed railway for Britain. Balfour Beatty VINCI (BBV) is working in partnership with HS2 Ltd to build the new high speed railway in your area.

The work we will be doing

To continue works to construct a viaduct that will carry the HS2 line over the realigned Gilson Road, we will need to complete works to create a retaining wall close to the existing Gilson Drive. The retaining wall will provide extra support for the ground to ensure it is maintained in place.

Traffic management

To complete these works safely, we will install two-way traffic lights along a short section of Gilson Drive from Wednesday 8 February until Friday 17 March. The traffic lights will be in place from 7.00am until 6.00pm from Monday to Friday. The location of the traffic lights will be to the north of our haul road, which is used for us to safely access and egress Gilson Drive. The location of this traffic management is outlined in orange on the map on the map below.



What work will we be doing?

- Installation of temporary traffic lights on Gilson Drive from Wednesday 8 February until Friday 17 March
- Works to create a retaining wall near Gilson Drive

What to expect

- Traffic lights to be in place from 7.00am until 6.00pm from Monday until Friday throughout the works
- Clear signage to be in place throughout

What we will do

- Keep all work areas safe and secure
- Provide updates on hs2inwarwickshire.co.uk

Keeping you informed

We are committed to keeping you informed about work on HS2. This includes ensuring you know what to expect and when to expect it, as well as how we can help.

Residents' Charter and Commissioner

The Residents' Charter is our promise to communicate as clearly as we possibly can with people who live along or near the HS2 route.
www.gov.uk/government/publications/hs2-residents-charter

We also have an independent Residents' Commissioner whose job is to make sure we keep to the promises we make in the Charter and to keep it under constant review. Find reports at:
www.gov.uk/government/collections/hs2-ltd-residents-commissioner

You can contact the Commissioner at:
residentscommissioner@hs2.org.uk

Construction Commissioner

The Construction Commissioner's role is to mediate and monitor the way in which HS2 Ltd manages and responds to construction complaints. You can contact the Construction Commissioner by emailing:
complaints@hs2-cc.org.uk

Property and compensation

You can find out all about HS2 and properties along the line of route by visiting:
www.gov.uk/government/collections/hs2-property
Find out if you're eligible for compensation at:
www.gov.uk/claim-compensation-if-affected-by-hs2


Holding us to account

If you are unhappy for any reason you can make a complaint by contacting our HS2 Helpdesk team. For more details on our complaints process, please visit our website:
www.hs2.org.uk/how-to-complain

Contact Us

Contact our HS2 Helpdesk team all day, every day of the year on:

 Freephone **08081 434 434**

 Minicom **08081 456 472**

 Email **hs2enquiries@hs2.org.uk**

Write to:

FREEPOST

HS2 Community Engagement

Website **www.hs2.org.uk**

To keep up to date with what is happening in your local area, visit:
www.hs2inyourarea.co.uk

Please contact us if you'd like a free copy of this document in large print, Braille, audio or easy read. You can also contact us for help and information in a different language.

HS2 Ltd is committed to protecting personal information. If you wish to know more about how we use your personal information please see our Privacy Notice

<https://www.gov.uk/government/publications/high-speed-two-ltd-privacy-notice>

Reference number: HS2-MW-BBV-Ph1-Ar-No-N1-Traf-41-01/03/2023

High Speed Two (HS2) Limited, registered in England and Wales.

Registered office: Two Snowhill, Snow Hill Queensway, Birmingham B4 6GA.

Company registration number: 06791686. VAT registration number: 888 8512 56.