

# HS2

## Notice of ground investigation work near Madeley, Staffordshire.

High Speed Two (HS2) is the new high speed railway for Britain. Working on behalf of HS2 Ltd, National Grid Electricity Distribution (NGED) are carrying out site surveys and assessments in the Madeley area.

### What we are doing

Due to the planned future HS2 railway, NGED has been asked to build a new substation for HS2 to power their Tunnel boring machine.

In preparation for this construction, NGED will be carrying out ground investigations to determine the structure of the farm lane that will help us determine the methodology of future cable install works, with regards to protecting the trees.

NGED work site is along the length of the farm lane shown in the map attached, please note the trial pits locations. A small excavator will be used to carry out various trial pits on the site to a depth of 1.5m.

### How this will affect you

NGED will carry out the work during the day, from 8am to 16:30pm Monday to Friday. The works are away from the village, which should mean minimal disruption to the local communities of Madeley. However, you may notice the sound of the excavator. This is planned to be low level and will be kept to the minimum.

The lane will remain open for the duration of the works, however there will be a small delay for the workers to make the area safe, if a vehicle wants to pass. Please avoid the area, for the duration, if possible.

**If you have a question about HS2 or our works, please contact our helpdesk on 08081 434 434 or email [HS2enquiries@hs2.org.uk](mailto:HS2enquiries@hs2.org.uk)**

### Notification



#### Duration of works

19<sup>th</sup> December 2022  
for three days.

Our working hours  
will be 8.00am to  
16.30pm

#### What to expect

Slight increase in  
traffic.

Possible sound from  
the excavator  
breaking through the  
hard road surface,  
which is planned to  
be kept to the  
minimum.

#### What we will do

Notify people of any  
changes to the  
activity.

## Works Location Map

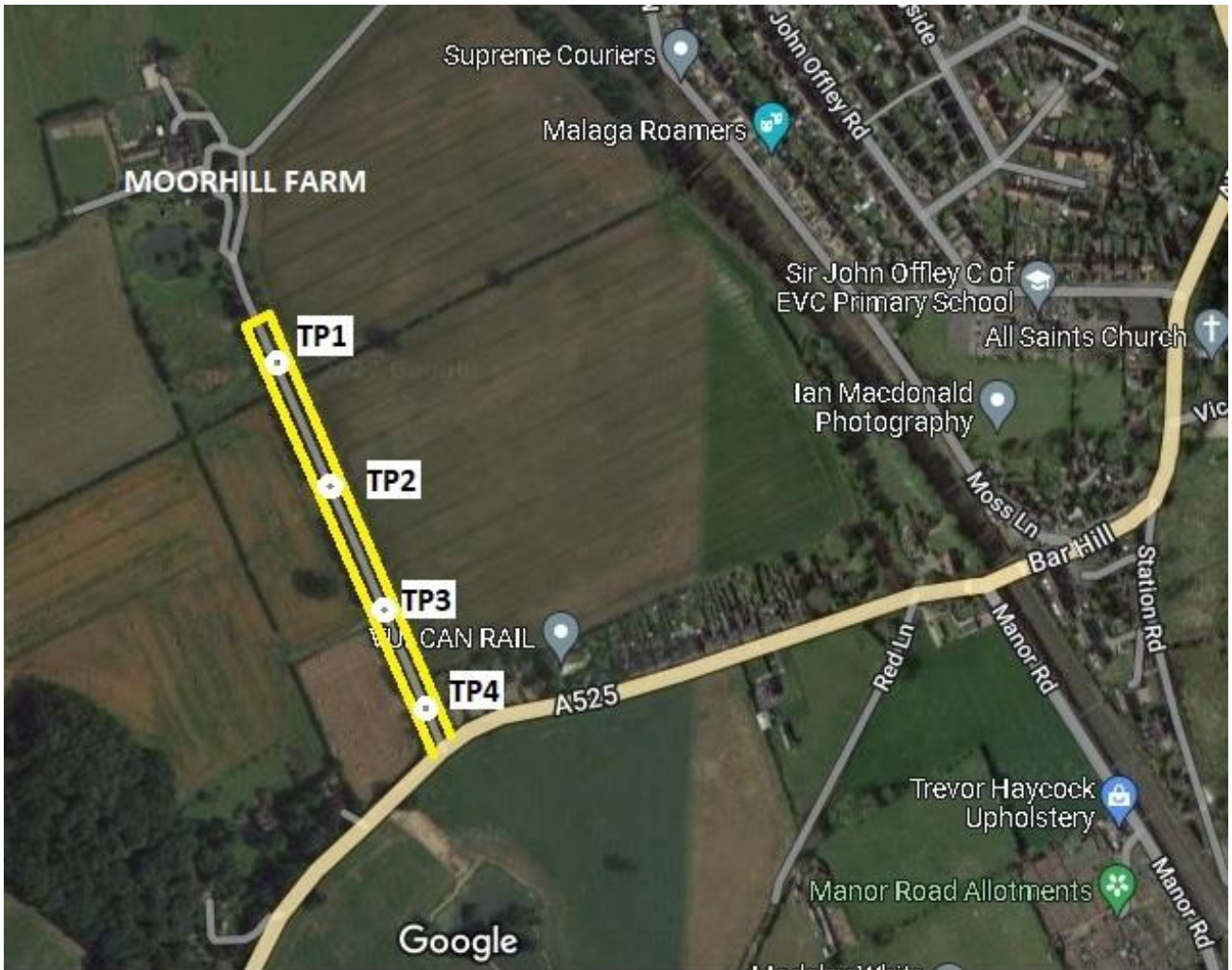


Fig 1: Drawing showing location of the trial pits.

## Keeping you informed

We are committed to keeping you informed about work on HS2. This includes ensuring you know what to expect and when to expect it, as well as how we can help.

### Residents' Charter and Commissioner

The Residents' Charter is our promise to communicate as clearly as we possibly can with people who live along or near the HS2 route.  
[www.gov.uk/government/publications/hs2-residents-charter](http://www.gov.uk/government/publications/hs2-residents-charter)

We also have an independent Residents' Commissioner whose job is to make sure we keep to the promises we make in the Charter and to keep it under constant review. Find reports at:  
[www.gov.uk/government/collections/hs2-ltd-residents-commissioner](http://www.gov.uk/government/collections/hs2-ltd-residents-commissioner)  
You can contact the Commissioner at:  
[residentscommissioner@hs2.org.uk](mailto:residentscommissioner@hs2.org.uk)

### Construction Commissioner

The Construction Commissioner's role is to mediate and monitor the way in which HS2 Ltd manages and responds to construction complaints. You can contact the Construction Commissioner by emailing:  
[complaints@hs2-cc.org.uk](mailto:complaints@hs2-cc.org.uk)

### Property and compensation

You can find out all about HS2 and properties along the line of route by visiting:  
[www.gov.uk/government/collections/hs2-property](http://www.gov.uk/government/collections/hs2-property)  
Find out if you're eligible for compensation at:  
[www.gov.uk/claim-compensation-if-affected-by-hs2](http://www.gov.uk/claim-compensation-if-affected-by-hs2)

### Holding us to account

If you are unhappy for any reason you can make a complaint via the helpline. For more details on our complaints process, please visit our website:  
[www.hs2.org.uk/how-to-complain](http://www.hs2.org.uk/how-to-complain)

## Contact Us

If you have any questions about this notification of works, please get in touch.

 24/7 Freephone **08081 434 434**

 Minicom **08081 456 472**

 Email **[HS2enquiries@hs2.org.uk](mailto:HS2enquiries@hs2.org.uk)**

Write to:

**FREEPOST**

**HS2 Community Engagement**

Website **[www.hs2.org.uk](http://www.hs2.org.uk)**

To keep up to date with what is happening in your local area, visit:  
**[www.hs2.commonplace.is](http://www.hs2.commonplace.is)**

**Please contact us if you'd like a free copy of this document in large print, Braille, audio or easy read. You can also contact us for help and information in a different language.**

HS2 Ltd is committed to protecting personal information. If you wish to know more about how we use your personal information please see our Privacy Notice  
<https://www.gov.uk/government/publications/high-speed-two-ltd-privacy-notice>

HS2 Helpdesk Ref: HS2-EW-UT-Ph2A-UT-9-28/11/2022

High Speed Two (HS2) Limited, registered in England and Wales. Registered office: Two Snowhill, Snow Hill Queensway, Birmingham B4 6GA. Company registration number: 06791686. VAT registration number: 181 4312 30.