



Notice of recurring temporary two-way traffic lights and fencing works, Wood End Lane, Lichfield. Update, (subject to consent).

December 2022 | www.hs2.org.uk

High Speed Two (HS2) is the new high speed railway for Britain. Working on behalf of HS2 Ltd, Balfour Beatty is carrying out fencing works on Wood End Lane, Lichfield.

What are we doing

Ahead of the main highway improvement works on Wood End Lane and the junction with A515, we will be installing fencing along the south and north side of the carriageway on Wood End Lane and the A515.

We contacted you in November 2022 to let you know about these works, however, due to our new revised work programme this **will now take place in January 2023** not in December 2022.

To reduce the impact of the works for users of the highway we will install the fencing from within the fields. To enable us to do this we will use nine field access points along Wood End Lane between the A515 and Watery Lane. This will also include a 100-metre section on the A515, north of the Wood End Lane junction.

To safely gain entry and exit at each of the field access points, to deliver and remove our machinery, we will require a two-day lane closure at each location with temporary two-way traffic lights, (one for delivery and one to remove the machinery).

When will the works take place

There will be a total of **eighteen days of recurring one day lane closures** with two-way traffic lights on Wood End Lane between A515 and Watery Lane and the A515 (subject to consent) which will take place between **8am and 5pm** within the following timescales:

Monday 9 and Friday 13 January 2023

Monday 16 and Friday 20 January 2023

Monday 23 and Friday 27 January 2023

Monday 30 January 2023 and Friday 3 February 2023

Monday 6 and Friday 10 February 2023

If you have a question about HS2 or our works, please contact our HS2 Helpdesk team on 08081 434 434 or email hs2enquiries@hs2.org.uk

Duration of works

Monday 9 January to
Friday 10 February 2023,
8am to 5pm (weekdays
only).

What to expect

Eighteen days of recurring
one day lane closures with
two-way traffic lights on
Wood End Lane between
A515 and Watery Lane.

Creation of nine field
access points.

Fencing works.

We will be onsite one hour
either side of these times to
set-up and close-down the
worksite.

Please plan and allow
extra time for your
journeys during the
works.

What we will do

We will inform people of
any changes in advance.

Notice of recurring temporary two-way traffic lights and fencing works, Wood End Lane, Lichfield. Update, (subject to consent).

www.hs2.org.uk

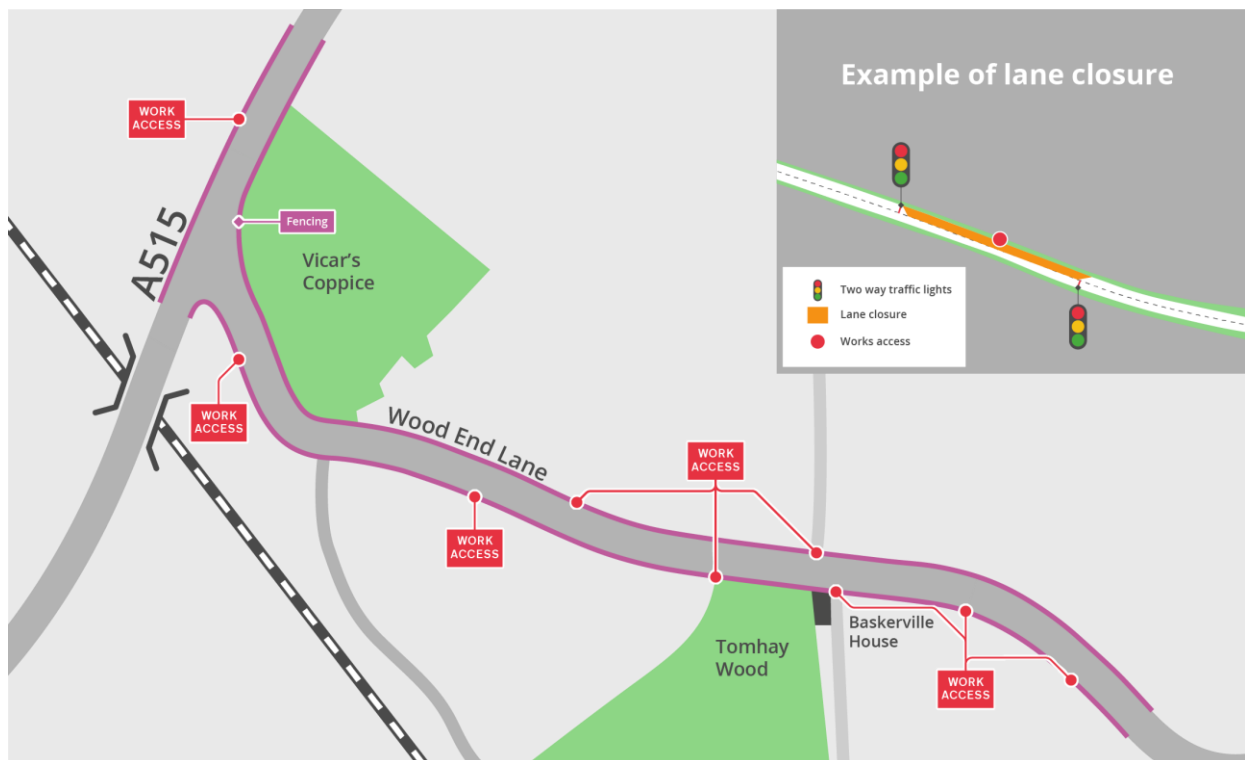
How will this affect me

We will put in place **eighteen days of recurring one day lane closures** with temporary two-way traffic lights on Wood End Lane between A515 and Watery Lane between

Monday 9 January to Friday 10 February 2023, 8am to 5pm (weekdays only).

Please plan and allow extra time for your journeys during the works.

Location of nine field access points



Notification



Contact our HS2 Helpdesk team on **08081 434 434**

Keeping you informed

We are committed to keeping you informed about work on HS2. This includes ensuring you know what to expect and when to expect it, as well as how we can help you.

The Residents' Commissioner

The independent Residents' Commissioner oversees and monitors our commitments to you.

The commissioner's reports and our responses can be found at www.gov.uk/government/collections/hs2-ltd-residents-commissioner

The Residents' Commissioner makes sure we fulfil the commitments in the HS2 Community Engagement Strategy (<https://bit.ly/3oOA25j>).

The Residents' Commissioner can be contacted on: residentscommissioner@hs2.org.uk

Construction Commissioner

The independent Construction Commissioner regularly meets our Chief Executive Officer to raise any concerns or emerging trends across HS2.

The Construction Commissioner's role has been developed to monitor the way we manage and respond to construction complaints.

The commissioner mediates on disputes about construction, involving individuals and organisations, that we can't resolve. The commissioner advises members of the public about how to make a complaint about construction.

The Construction Commissioner can be contacted on: complaints@hs2-cc.org.uk

Property and compensation

You can find out about HS2 and properties along the route by visiting:

www.gov.uk/government/collections/hs2-property

Find out if you can claim compensation at:

www.gov.uk/claim-compensation-if-affected-by-hs2

Holding us to account

If you are unhappy for any reason you can make a complaint by contacting the HS2 Helpdesk. For more details on our complaints process, please visit:

www.hs2.org.uk/in-your-area/contact-us/how-to-complain/

Contact us

Contact our HS2 Helpdesk team all day, every day of the year on:

 Freephone **08081 434 434**

 Minicom **08081 456 472**

 Email **HS2enquiries@hs2.org.uk**

Write to:

FREEPOST

HS2 Community Engagement

Website **www.hs2.org.uk**

To keep up to date with what is happening in your local area, visit: **www.HS2inyourarea.co.uk**

Please contact us if you'd like a free copy of this document in large print, Braille, audio or 'easy read' format. You can also contact us for help and information in a different language.

HS2 Ltd is committed to protecting personal information. If you wish to know more about how we use your personal information please see our Privacy Notice:

<https://www.gov.uk/government/publications/high-speed-two-ltd-privacy-notice>

Reference number: HS2-EW-BB-Ph2a-Ar-CA01-Eco-14-21/11/2022

High Speed Two (HS2) Limited, registered in England and Wales.

Registered office: Two Snowhill, Snow Hill Queensway, Birmingham B4 6GA.

Company registration number: 06791686. VAT registration number: 888 8512 56.