

Contact our HS2 Helpdesk team on 08081 434 434

HS2 Update

Colne Valley | Winter 2022

High Speed Two (HS2) is the new high speed railway for Britain. The Colne Valley Viaduct girder is now making its way across the valley. Our winter newsletter will update you on current construction, timescales, and any impacts.

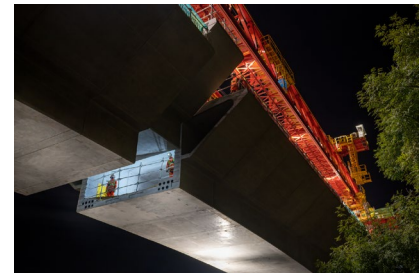
Viaduct update

The Colne Valley Viaduct has now been built across the A412 North Orbital Way. Road users will have seen the red girder, called Dominique, that is assembling the deck of the Colne Valley Viaduct as it crossed the road, segment by segment. The Colne Valley Viaduct is now on approach to the lakes on its 3.4km long journey from the North Embankment, near Denham Water Ski Club to the South Embankment near Harvil Road in Hillingdon. As it crossed the road, access was maintained for residents and businesses either side of the closure and we would like to thank residents and regular

road users on the A412 for their patience.

In October we erected a section of new site hoarding, which reflects the local nature of the Colne Valley on either side of the road. This was chosen following engagement with local community groups and the parish council.

Works behind the hoarding will now focus on the continued construction of the viaduct decking and the finishing works on the completed deck sections which will create the final surface textures and platform for the track and acoustic barriers to be installed.



Diesel-free sites

Align JV is pleased to confirm that seven construction sites in the Chilterns and Colne Valley have eliminated diesel from their operation – generators, welfare facilities, crawler cranes and piling rigs.

These construction sites are 100 per cent diesel-free, and the project continues to reduce its carbon emissions.



Colne Valley lakes

First V pier

In October this year the first V pier was constructed in Harefield Moor Lake. All the 56 piers being constructed to support the Colne Valley Viaduct are slightly different in shape, and the V piers are some of the largest as they will support the wider spans of the viaduct, which has been designed to sit low to enable views across the landscape. These piers will play a key role in minimising the viaduct's footprint on the lakes and complementing the views of the natural surroundings. Some of the spans are up to 80m long and the V piers are constructed so that both they and the viaduct can withstand the forces of the trains accelerating and braking.



Future viaduct works

16 piers have now been erected and construction of the viaduct is progressing well. We are currently on programme for the launching girder to reach Moorhall Road in Summer 2023. At this point we will need to be close the road temporarily as the viaduct is constructed across it. Full details of any closure and associated impacts will be circulated early next year, well ahead of the works starting.

Completion of the viaduct is due in summer 2025, with most of the landscaping of the Western Slopes being finished at the same time as construction. While the viaduct is being built the internal fitting out of the structure for electricity and drainage is also taking place. When this is completed, Align will hand over to HS2 Railway Systems who will start working on the track and electricity power fittings.



Environment

Scaffold bridge across Grand Union Canal

As a part of our ongoing construction works to build the piers in the lakes and on the ground to support the Colne Valley Viaduct, we have built an overhead scaffold frame to carry a water treatment pipeline across the Grand Union Canal.

We process wastewater and groundwater from our viaduct pier worksites to ensure that any building contaminants are removed. The cleaned water is then released back into the Colne Valley under licence from the Environment Agency. Recycled water from our worksites south of the canal will be transported to an existing treatment plant at the South Portal via the temporary pipework. These structures will be removed once the viaduct piers are completed between Savay Lake and Harefield Lake No2 in early 2024.



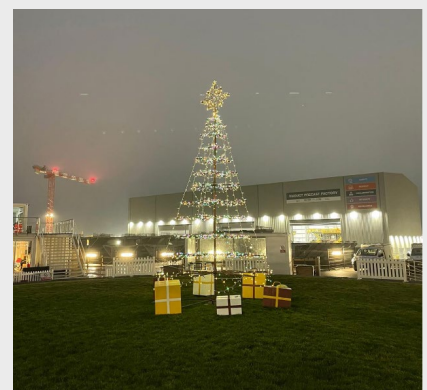
Christmas working hours

The main works site at the South Portal, near West Hyde, Rickmansworth will be open until the afternoon of 24 December 2022 but the Tunnel Boring Machines' (TBMs) last shift of this year will finish on 21 December and will restart on 4 January 2023.

All Align vent shaft sites in the Chilterns will close from 12pm on 23 December 2022 for the festive break. Security and maintenance teams will be present throughout the festive season and are permitted to carry out emergency works if required, however all main works activities will stop.

Sites will reopen on Tuesday 3 January 2023.

We would like to take this opportunity to wish you all a very merry Christmas and a happy and healthy new year.



Keeping you informed

We are committed to keeping you informed about work on HS2. This includes ensuring you know what to expect and when to expect it, as well as how we can help you.

The Residents' Commissioner

The independent Residents' Commissioner oversees and monitors our commitments to you.

The commissioner's reports and our responses can be found at www.gov.uk/government/collections/hs2-ltd-residents-commissioner

The Residents' Commissioner makes sure we fulfil the commitments in the HS2 Community Engagement Strategy (<https://bit.ly/3oOA25j>).

The Residents' Commissioner can be contacted on: residentscommissioner@hs2.org.uk

Construction Commissioner

The independent Construction Commissioner regularly meets our Chief Executive Officer to raise any concerns or emerging trends across HS2.

The Construction Commissioner's role has been developed to monitor the way we manage and respond to construction complaints.

The commissioner mediates on disputes about construction, involving individuals and organisations, that we can't resolve. The commissioner advises members of the public about how to make a complaint about construction.

The Construction Commissioner can be contacted on: complaints@hs2-cc.org.uk

Property and compensation

You can find out about HS2 and properties along the route by visiting:

www.gov.uk/government/collections/hs2-property

Find out if you can claim compensation at:

www.gov.uk/claim-compensation-if-affected-by-hs2

Holding us to account


If you are unhappy for any reason you can make a complaint by contacting the HS2 Helpdesk. For more details on our complaints process, please visit:

www.hs2.org.uk/in-your-area/contact-us/how-to-complain/

Contact us

Contact our HS2 Helpdesk team all day, every day of the year on:

 Freephone 08081 434 434

 Minicom 08081 456 472

 Email HS2enquiries@hs2.org.uk

Write to:

FREEPOST

HS2 Community Engagement

Website www.hs2.org.uk

To keep up to date with what is happening in your local area, visit: www.HS2inyourarea.co.uk

Please contact us if you'd like a free copy of this document in large print, Braille, audio or 'easy read' format. You can also contact us for help and information in a different language.

HS2 Ltd is committed to protecting personal information. If you wish to know more about how we use your personal information please see our Privacy Notice: <https://www.gov.uk/government/publications/high-speed-two-ltd-privacy-notice>

Reference number: HS2-MW-Align-Ph1-Ar-Ce-C1-OTH-19-12/05/2022

High Speed Two (HS2) Limited, registered in England and Wales.

Registered office: Two Snowhill, Snow Hill Queensway, Birmingham B4 6GA.

Company registration number: 06791686. VAT registration number: 888 8512 56