

HS2

ECRG Presentations & Slides

29 November 2022

Time	Topic	Presenter
17:20	1. Welcome and Introductions	David Demolder
17:25	2. Hampstead Road Bus Stops	Lucy Haskett MDjv and Abbas Raza TfL
17:35	3. HS2 Euston Station Design Engagement	Declan McCafferty Grimshaw Architects, Nina Radford, Euston Station IPT
18:10	4. Materials by Rail	Laurence Whitbourn
18:15	5. HS2 Update	
	5.1 MaceDragados	Nina Radford
-	5.2 Network Rail update	Mark Reece and Emily Hanlon
-	5.3 SCS	Neil VanKervel, Lee Harman and Amy Allen
	6. Flash Report including Working Groups	(Note only)
18:35	7. Actions Log	David Demolder
18:45	8. Community Questions/AOB	David Demolder
18:55	9. Minutes of the last meeting	David Demolder

HS2

1. Welcome and introductions

David Demolder

HS2

2. Hampstead Road Bus Stops

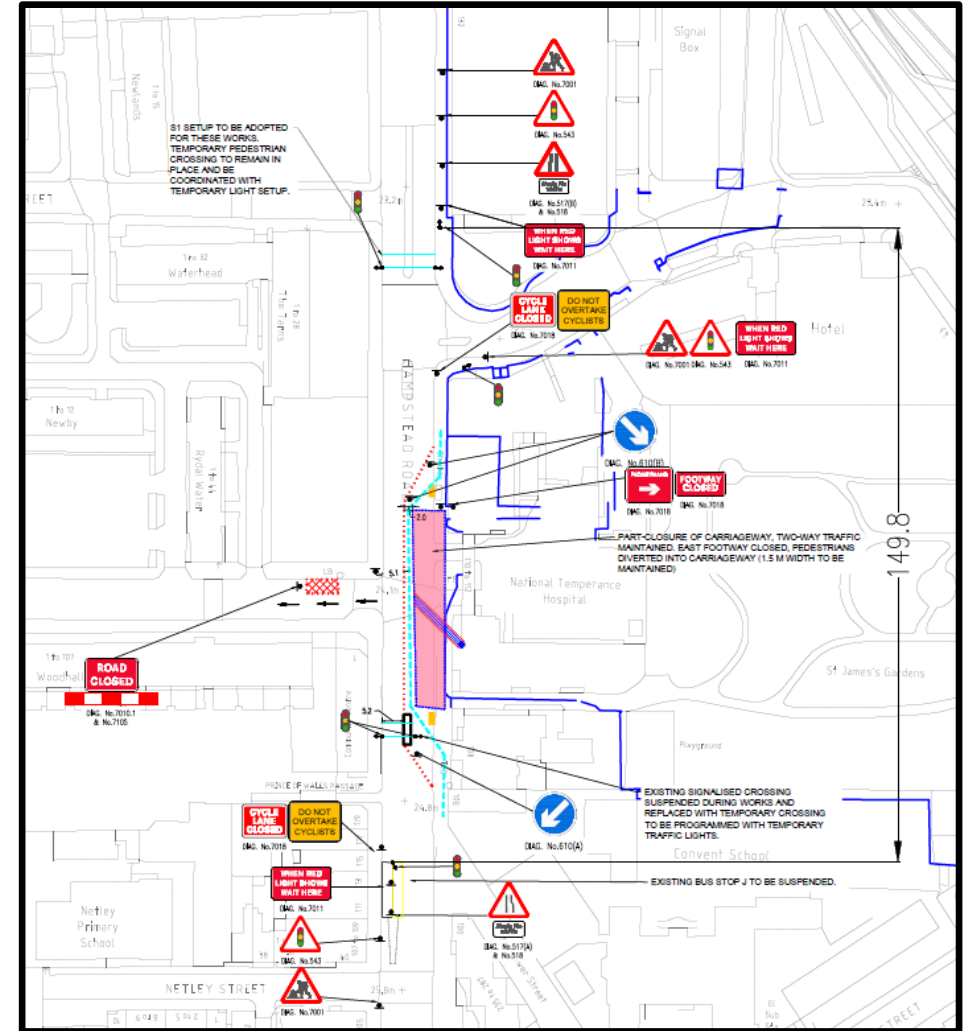
Lucy Haskett MDjv

Abbas Raza TfL

Hampstead Road bus stops update

Phase 1 potable (drinking) water works on Hampstead Road commenced in October 2022. Currently anticipated to complete end of November 2022.

Road safety concerns relating to driver behaviour raised following start of phase 1 water works, resulting in suspension of bus stop J (northbound).



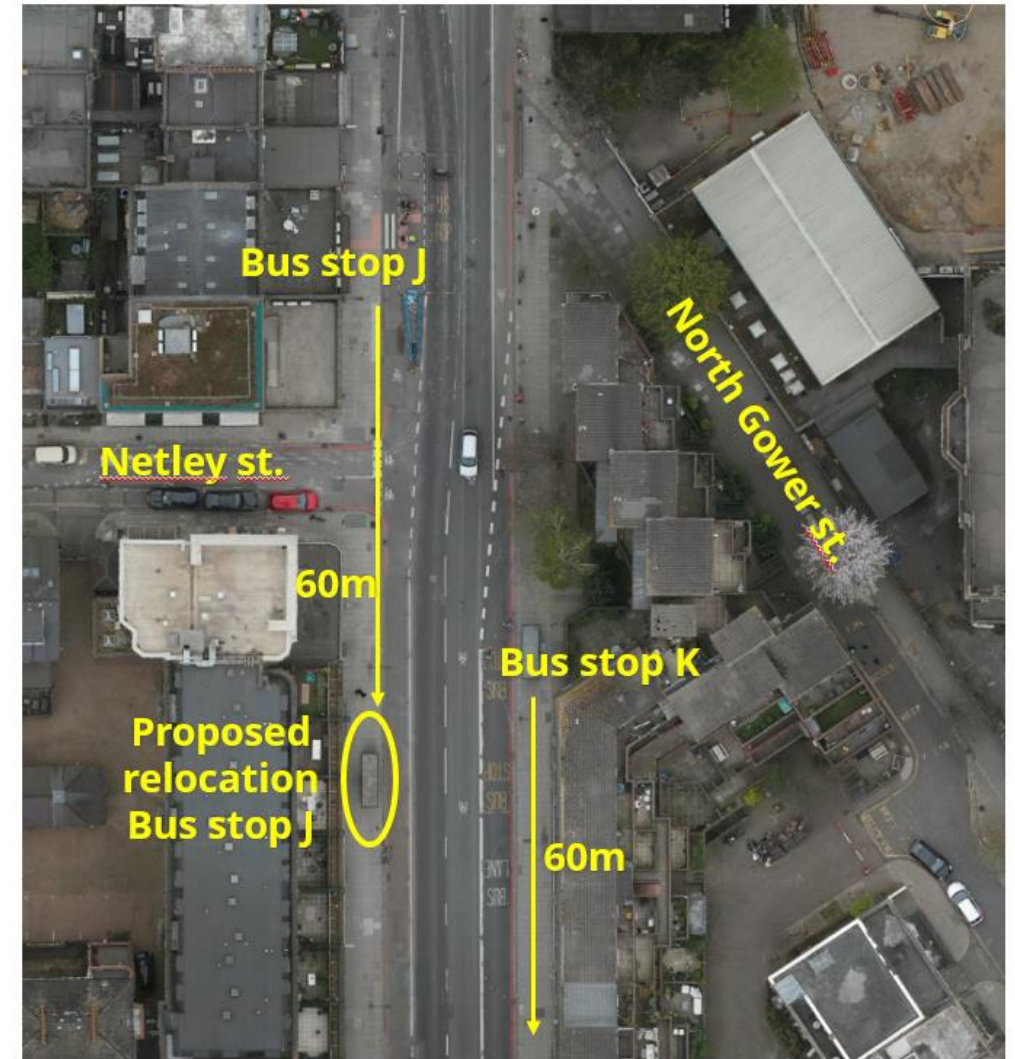
Hampstead Road bus stop J and K relocation

Bus stop relocations required to enable continued use of nearby bus stops whilst utilities works take place.

Bus stop J (northbound) – currently suspended and to be relocated c. 60m south of existing location (former bus shelter).

Bus stop K (southbound) – currently operational however, to be relocated c. 60m south of existing location.

Relocation of bus stops anticipated January 2023 (subject to approvals).



Phase 1 and 2 – Vehicular access from Hampstead Road to Robert Street maintained however, no access from Robert Street onto Hampstead Road. Diversion routes in place.

[illegible]

HS2

3. HS2 Euston Station Design Engagement

Declan McCafferty & Nina Radford

HS2

Slides for this item will be circulated on 24 November as agreed with the Contact Group

HS2

4. Materials by Rail

Laurence Whitbourn

Materials by Rail

To NOTE a verbal update on the current position of Materials by Rail.

HS2

5. HS2 Update

HS2

5.1 Mace Dragados

Nina Radford

Mace Dragados

To NOTE

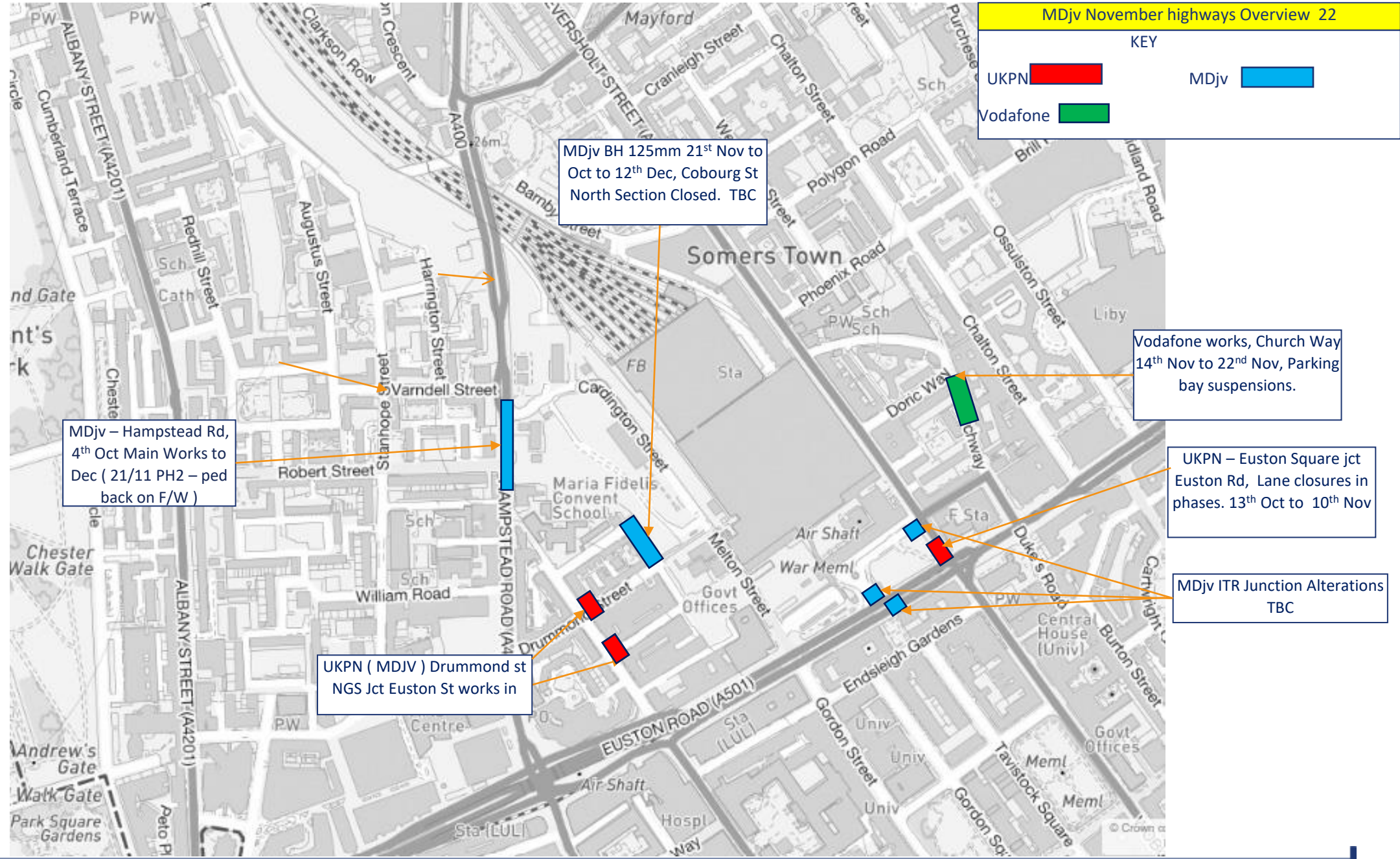
- The works lookahead
- Robert Street closure at junction of Hampstead Rd
- Cobourg Street closure and hoarding move
- Interim Taxi Rank move
- Euston Road central reservation removal

Construction overview – MDjv sites

Zone 5		Enabling works including pile removal and installation of retaining wall along Hampstead Road – largely complete
NTH		National Temperance Hospital site – Main station enabling works including test piling
Maria Fidelis		Old School site – construction of new welfare building, and construction skills centre
TSS		Construction of a new LU Traction Sub Station and linking tunnels – piling and excavation completed
Two Towers		Demolition works to One Euston Square and Grant Thornton House
ITR		Construction of interim taxi rank – drainage and sub base ongoing, creation of access point next to bus station

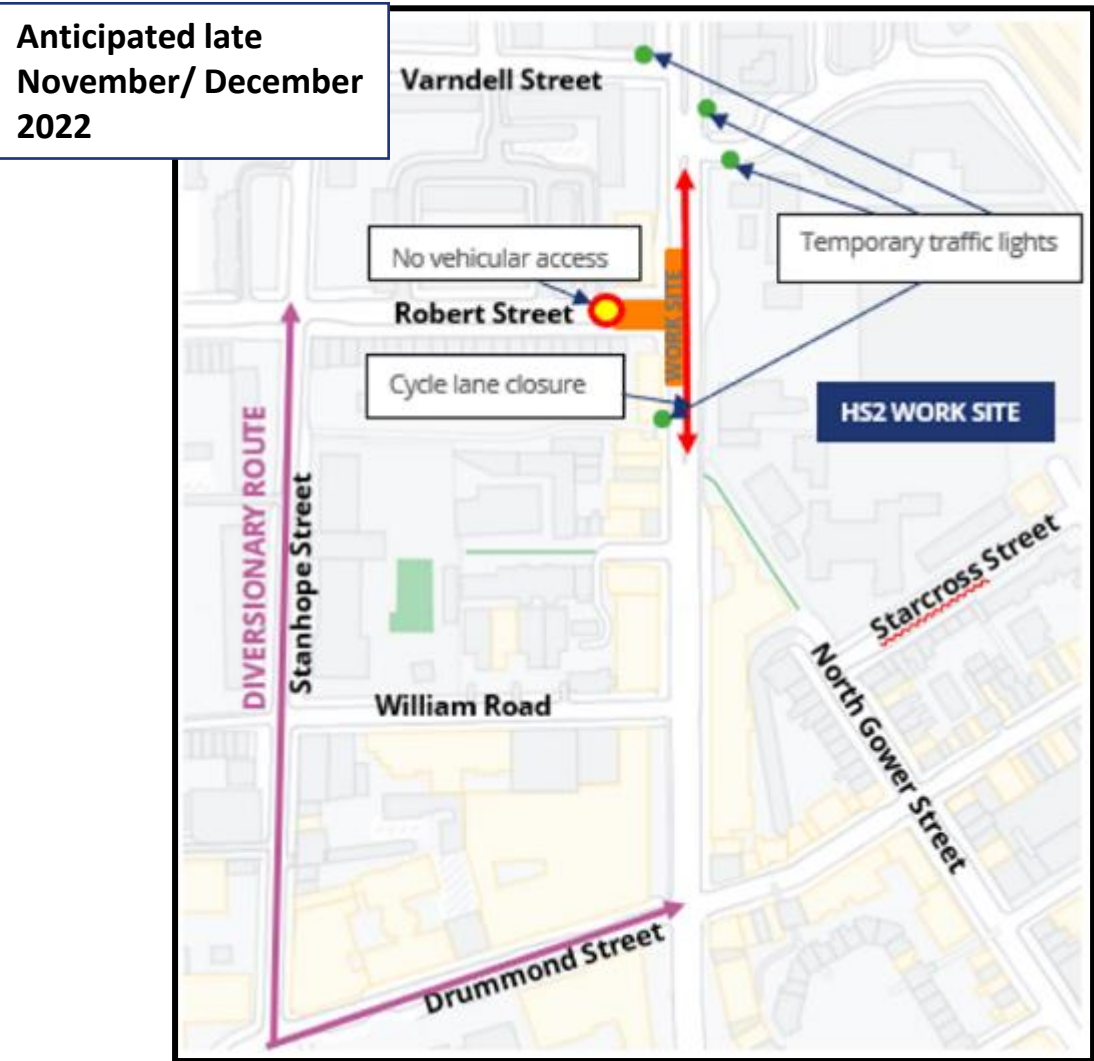


Works in the highway – November 2022



Utilities works on Hampstead Road

Phase 3 – Hampstead Road Northbound Lane



Phase 4 – Robert Street



Cobourg Street hoarding move

North section closure – Mid December targeted, potentially January 2023

To take place after completion of phase 1 125mm water main works



Full closure South section closure to take place after completion of phase 3 125mm water main works



Taxi Rank relocation

Overview

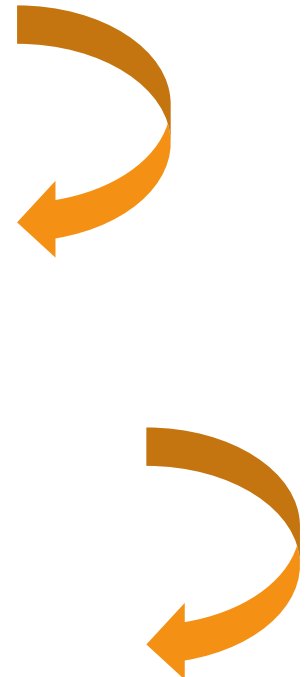
- Relocation of Taxi Rank scheduled: February/ March 2023
- Gordon Street closure linked to the above scope.
- Decommissioning of the existing taxi rank will commence following relocation.



Euston Road – Central Reservation removal

Overview

- Works Scheduled: Feb 2023 to June 2023
- Phased removal planned – East section, central section and western section
- Night works will be required – signals switchover, concrete works & reinstatement
- Will include occupation of a portion of Gordon St for signal installation (partial closure)



Mace Dragados Engagement

November/December

- Continued engagement on utilities north
- Engagement on Euston Road works and Interim Taxi Rank move (Melton Street & Gordon St closures)
 - To include wider business, political and cycle stakeholders
- Next stage of HS2 Euston design engagement commencing 23 November

Last period:

- Greening/ bulb planting community investment activity 4 November



St Mary & St Pancras School



Cobourg Street



Somers Town – Levita House

Station Design Events

Stage 3 November- December 2022

Public Exhibitions

- Wednesday 30 November 2022, 3pm to 8pm, The Surma Centre,
- Saturday 3 December 2022, 10am to 3pm, Maria Fidelis Catholic School,

Public Pop up

- Friday December 2022, 10am to 4pm, Chalton Street Market

Webinars

- Wednesday 30 November 2022, from 6.30pm to 8.30pm
- Wednesday 7 December 2022, from 1.30pm to 3.30pm

HS2

5.2 Network Rail On Network Works Update

Mark Reece & Emily Hanlon

A stylized graphic of a rail track, consisting of a series of vertical bars connected by horizontal lines, rendered in a dark blue color.

ECRG Update for Network Rail and On Network Works

A stylized graphic of a rail track, consisting of a series of vertical bars connected by horizontal lines, rendered in a dark blue color.

Clarkson Row: *existing site*



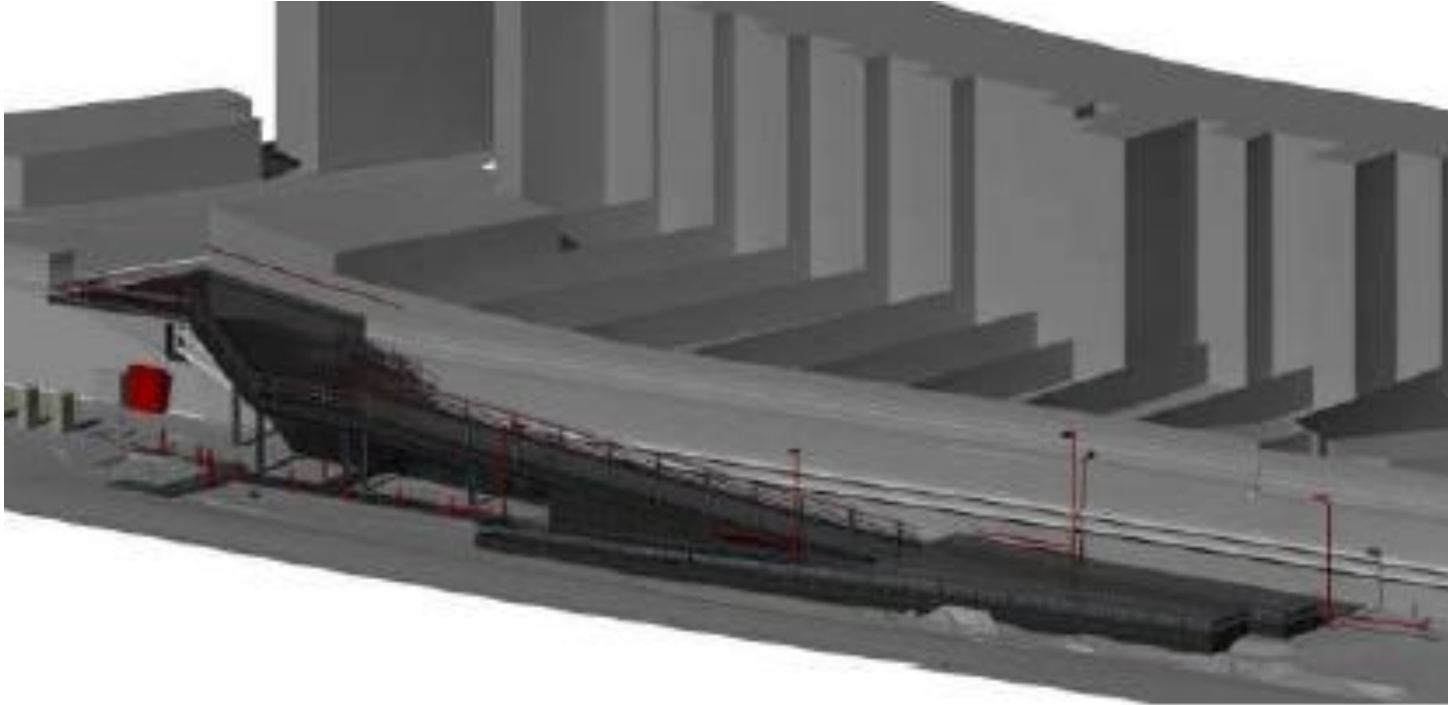
To enable the construction of the new HS2 railway, Network Rail needs to install a new access point to allow maintenance teams access to the railway on the east side of the station approach.

Clarkson Row: existing Garage/storage unit



Network Rail will demolish the highlighted structure to make way for the access point.

Clarkson Row: 3D Sketch



The light-weight structure will minimise disruption to local residents during construction period.

We are actively exploring rail logistics.

Lighting will be designed so as to minimise impact to adjacent properties.

Clarkson Row: key programme dates

Activity	Date
Demolition of garage	30/01/23 – 03/02/23
Ancillary brickwork and finishes	14/02/23 – 15/02/23
Surfacing and road marking at street level	21/02/23 – 22/02/23
Plant arrives at site	21/02/23
Install lower ramp units	18/04/23
Install upper ramp units	04/05/23
Completions, inspections and hand-over	28/06/23
Overall completion	19/07/23

Dates are subject to change and may be impacted by ongoing strikes.

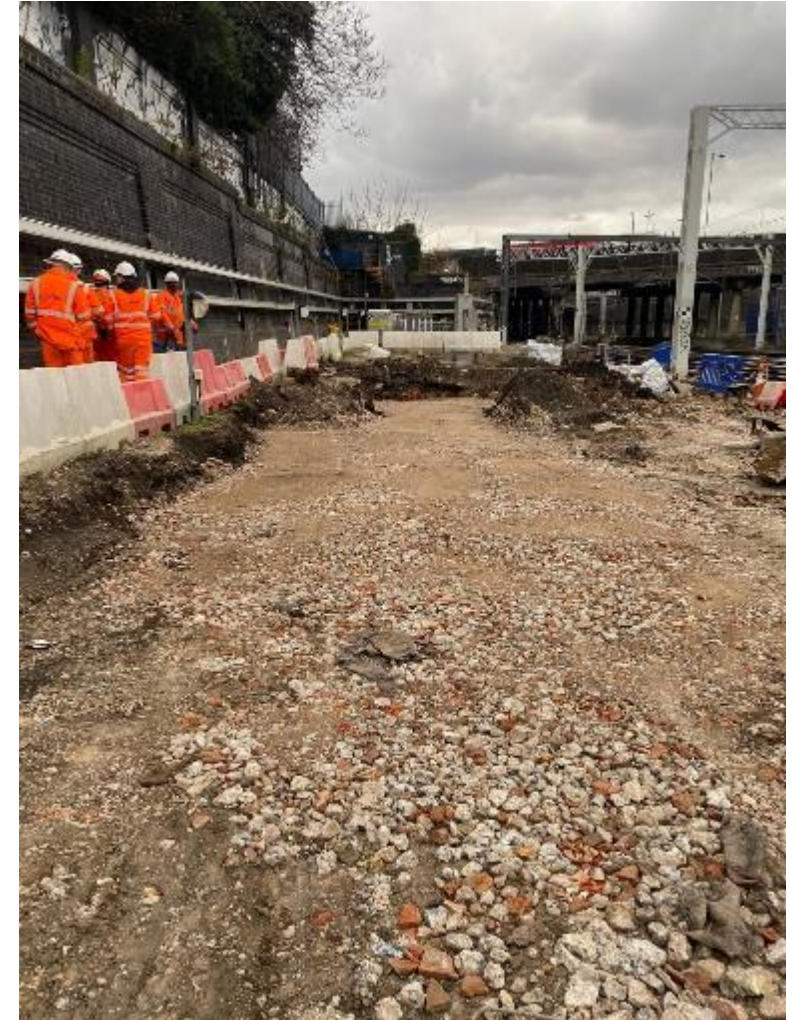
End state Clarkson Row elevation



Clarkson Row: supporting residents through construction

- Ongoing discussions with LBC and the Residents Association
- Door knocking, answering any questions you may have
- Introduction of greenery within the street
- Black fencing as requested by residents
- Delivery and removing of equipment by rail at every opportunity

Clarkson Row: site preparation done to date



Christmas working

Contractor	Dates	Site	Work description
Network Rail - Story	08.30 4 Dec - 04.00 on 30 Dec	Regents Canal bridge	Replacing railway bridge which carries two railway tracks over Regents Canal. This will keep the structure safe and reliable for passengers and the public.
Network Rail ONW - Skanska	08.30 24 Dec – 09.00 29 Dec:	Euston	Internal work on parcel deck, Hardwick House, and Euston Station which includes 24/7 working. This is part of our work to prepare for the construction of the new HS2 station.
Network Rail - Balfour Beatty / CRSA Project Alpha	23:00 24 Dec - 04:00 27 Dec.	Primrose Hill Tunnels	Track upgrades to improve reliability for passengers and freight services.

Euston Station – new and improved departure boards



We're installing brand new customer information screens at Euston station to help improve the provision of journey information for passengers. These will be brought into use before Christmas.

HS2

SCS ECRG Update

Amy Allen

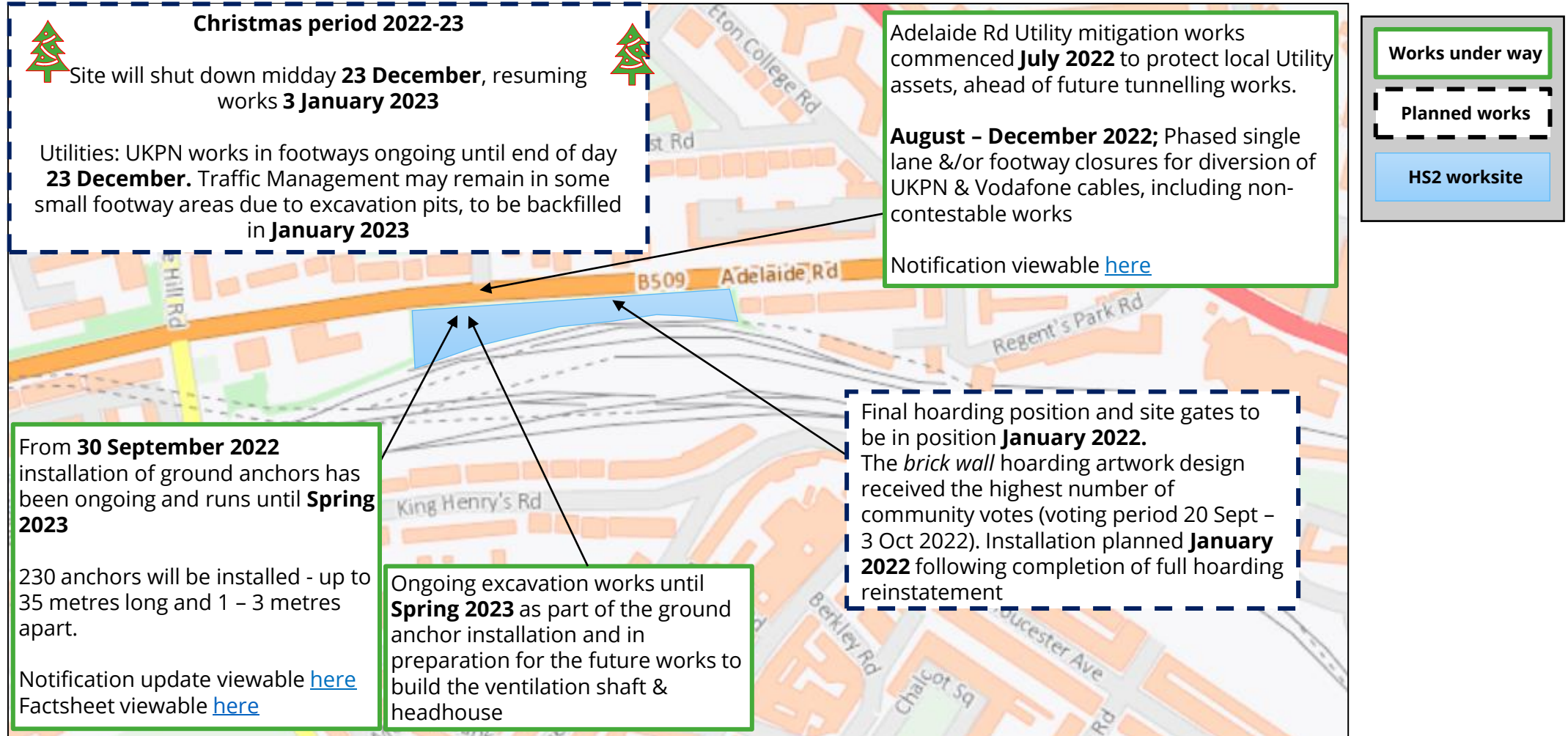
HS2

SCS Area Central update

Amy Allen

Adelaide Road Vent Shaft

Works update



*the dates for these phases might change. We'll provide updates at hs2.org.uk/in-your-area/

Adelaide Road Vent Shaft

Engagement and Community Investment update

- Between **20 September – 3 October** inclusive, the local community were invited to vote for their preference between 2 hoarding artwork designs for the Adelaide Road Vent Shaft site. Postcards were delivered to the local community a door knock took place on **20 September**, voting was possible via freepost or the HS2 website. The majority vote was for the brick wall with foliage design and this is anticipated to be installed in January 2023
- **13 October** HS2 & SCSJV catch-up with LB Camden HS2 Housing Manager – feedback following actions taken from Adelaide Road walkaround (16 September) with the Head of Beaumont Walk TRA and Cllr Atolagbe. Topics discussed included: site boundary/hoarding line and lighting, vehicle movements, site welfare, operative behaviours and potential community investment opportunities in the local area
- A door knock and letter drop took place **27 & 31 October** on Adelaide Road regarding ongoing Utility works in the footway, taking place in phases adjacent to residential properties 72 – 78 Adelaide Road. Alternate parking provision has been provided opposite the properties, during short-term restricted driveway access
- On **19 October & 16 November** virtual 1:1 sessions were held for residents local to Adelaide Road. Topics of interest included: the Head House design and progress with the Sch. 17 plans & specifications application/ongoing Utility works & alternate resident parking during temporary restricted driveway access, due to a period of Utility connection works
- On **8 November** a team of volunteers from SCSJV and UKPN undertook a community investment activity in the Adelaide Road area. A litter pick along Adelaide Road, Eton Road and at Beaumont Walk amounted to over 20 bags of litter and recyclable material cleared, then the accesses to Beaumont Walk were pressure-washed to remove build up of moss and debris. The existing planter boxes outside Modern Motors & Adelaide Medical Centre, Adelaide Road, were cleared and refilled with fresh topsoil, donated by our subcontractor J Murphy Sons, ahead of painting and planting in the coming weeks. LB Camden suggested suitable drought tolerant perennial plant species. On Wednesday 16 November, a variety of perennial species were planted
- 1kg of leftover topsoil was offered to the Adelaide Community Garden on Eton Road and a team of volunteers received this on **9 November**. The topsoil will be used to prepare the allotment area for winter weather conditions

Upcoming

- Upcoming virtual 1:1s for residents local to Adelaide Road take place monthly. Residents can book a 20-minute slot between 3pm and 6pm on the following dates throughout 2022; **21 December**

Adelaide Road Vent Shaft

Community investment activity - 8 November 2022

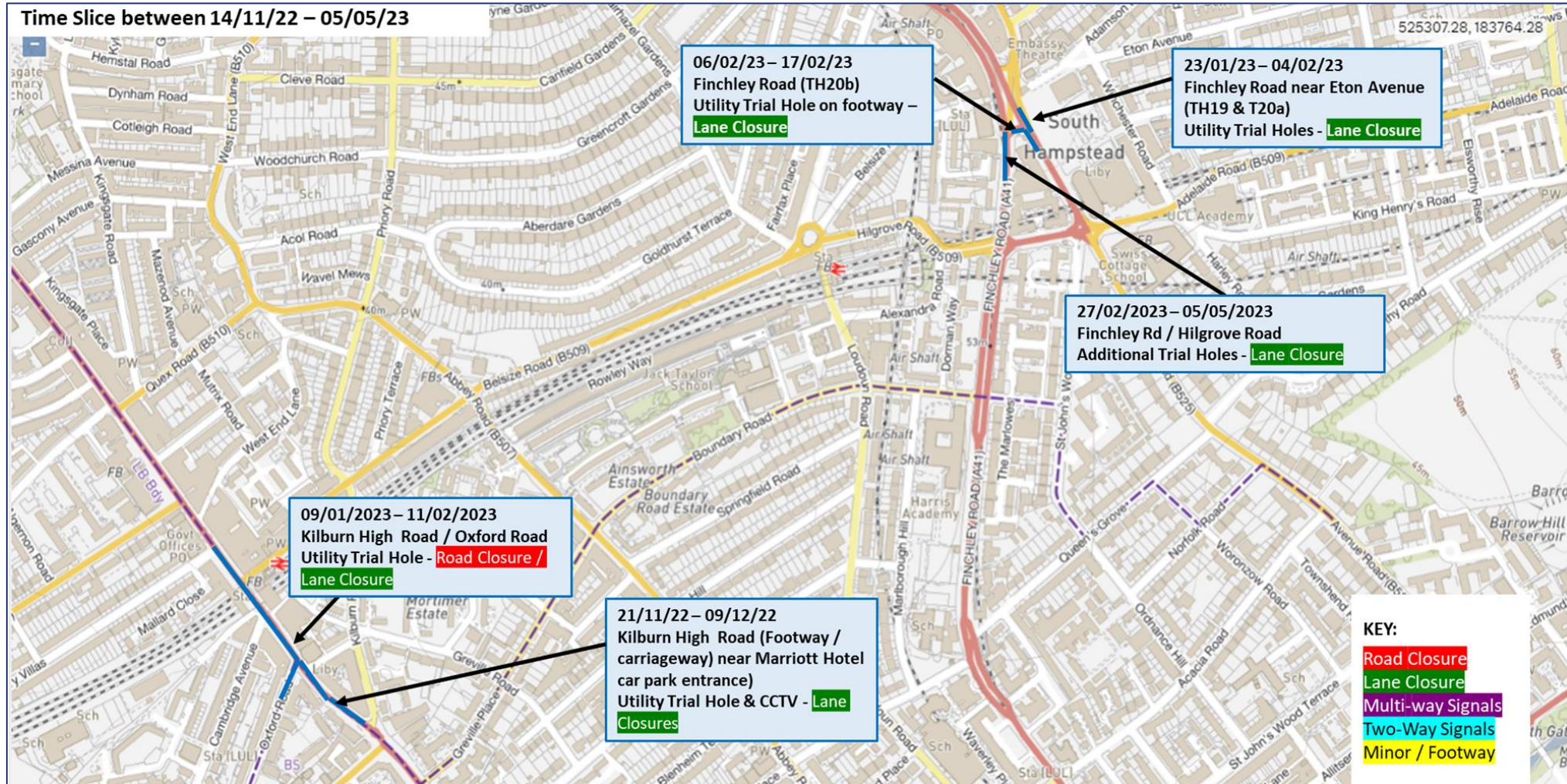


- Litter picking
- Planter boxes: emptied, cleaned & re-potted, perennial plant species planted
- Jet washing at Beaumont Walk



Kilburn High Road & South Hampstead

Works update



*the dates for these phases might change. We'll provide updates at hs2.org.uk/in-your-area/

SKANSKA



STRABAG

Working on
behalf of

HS2

SCS Area East update

Neil VanKervel, Lee Harman

Parkway

Parkway utility works - end January to summer 2023 (TBC)

- Divert a cable route on Parkway and Delancey Street
- Line section of sewer beneath Parkway
- Install monitoring equipment on sections of pipework beneath Parkway and Albert Street

We are still confirming the programme but know we will require lane and footway closures and parking bay suspensions.

We do not need to close Parkway for these works.



Mornington Street bridge closure

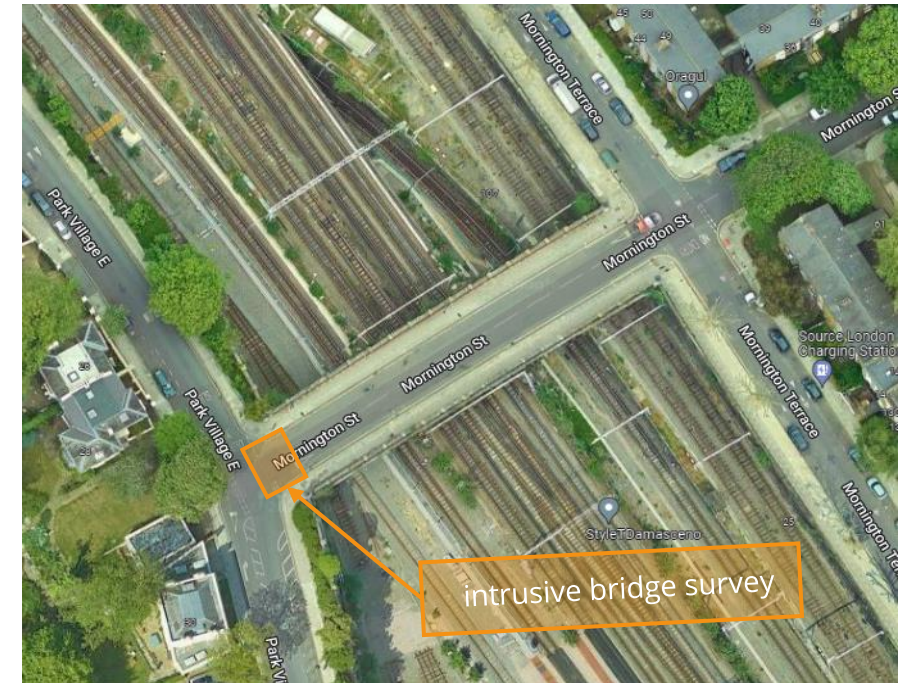
We have been surveying Mornington Street bridge to understand the structure and condition of the bridge.

Our recent survey has identified the need for further investigations into the strength and condition of the bridge.

The bridge will remain closed to traffic while we carry out these further investigations. Access for cyclists and pedestrians will be maintained.

We will update you once we know more.

We know how important this bridge is for access through the neighbourhood and we appreciate the impact this has on local residents.



Mornington Terrace and Mornington Street bridge Network Rail works

Network Rail (NR) require a new street to track access (to the western side of the tracks) for regular maintenance and emergency works.

This is to replace their existing access impacted by HS2 works.

Current proposed design includes a staircase and hoist (equipment lift) from Mornington Street bridge and a parking zone on Mornington Terrace. Both areas would be hoarded for safety and security reasons.

We are still working through the design. We will update on timescale and traffic management arrangements once we know more.

SCSJV have been instructed to deliver the NR West side temporary access which potentially includes the NR parking zone on Mornington Terrace.

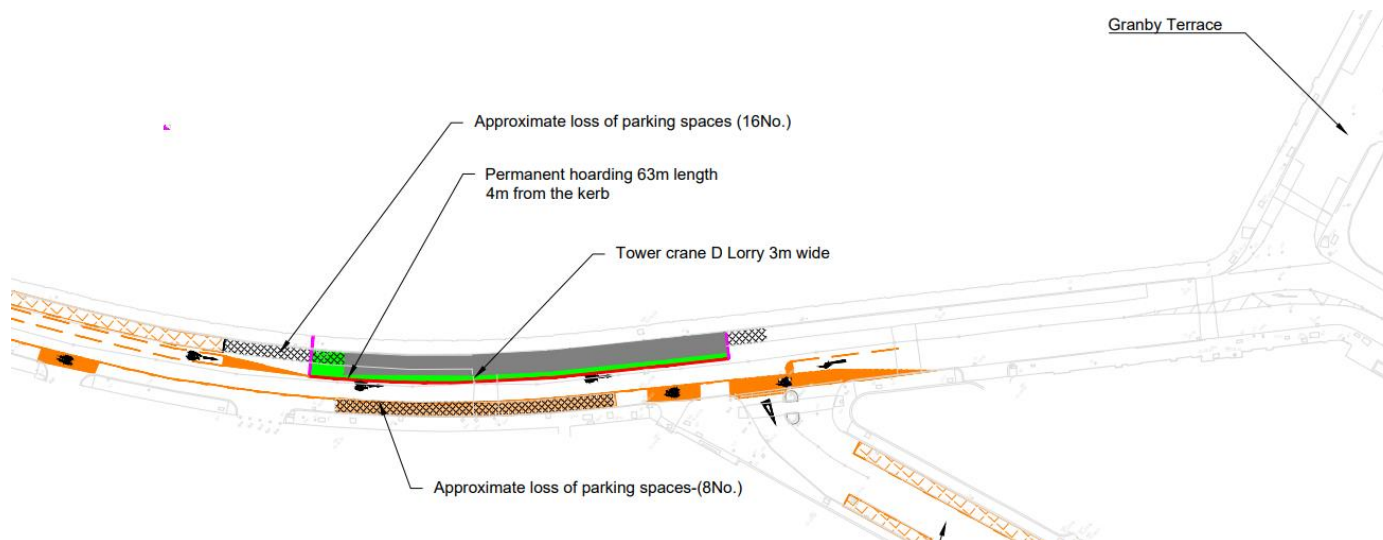


Park Village East southern layby

Access to the northern parts of our worksite via Hampstead Road and Stanhope Street gate will be increasingly limited as works at the southern end progress

We will continue to use Hampstead Road as the main site access where possible, but require an alternative access to maintain deliveries and collections to Camden Cutting south worksite

Vehicles will park within the layby and be loaded or unloaded using site tower cranes



Managing impacts

We will need to remove about **20 parking bays** to install and operate the lay-by. As we did for the northern layby, we are working closely with Camden Council to find alternative parking.

Update

We plan to install the southern lorry lay-by in 2023. We are still confirming the date and details of these works and will provide more information closer to the time.

Southern lay-by engagement

March to July

- 8 Mar & 3 May – raised with LBC
- 12 May – present to Crown Estate
- 22 Jun – workshop with LBC
- 19 Jul – notice to inform residents, including feedback form
- 20 Jul – pop-up on Park Village East
- 27 Jul – TLG

August

- 1 Aug - TWG
- 2, 17 & 31 Aug – pop-ups on Park Village East
- 3 Aug – workshop with LBC re. parking
- 8 & 18 Aug – meeting with Chairs of Resident's Associations
- 24 Aug - TLG

September

- 5 Sep – TWG
- 8 Sep – Euston Approaches newsletter
- 7 Sep – workshop with LBC re. parking & traffic impacts
- 12 Sep – site visit with Chair's of Resident's Associations
- 21 Sep – TLG
- 21 Sep – pop-up on Park Village East
- 27 & 29 Sep – community construction update meetings

October

- 5 Oct – rooftop guided tour
- 12 and 26 Oct - pop-ups near Park Village East
- 19 Oct – TLG
- 24 Oct - TWG

Hampstead Road enabling works

We need to divert the utilities on Hampstead Road before we can begin works to extend the bridge.

Hampstead Road temporary utility works

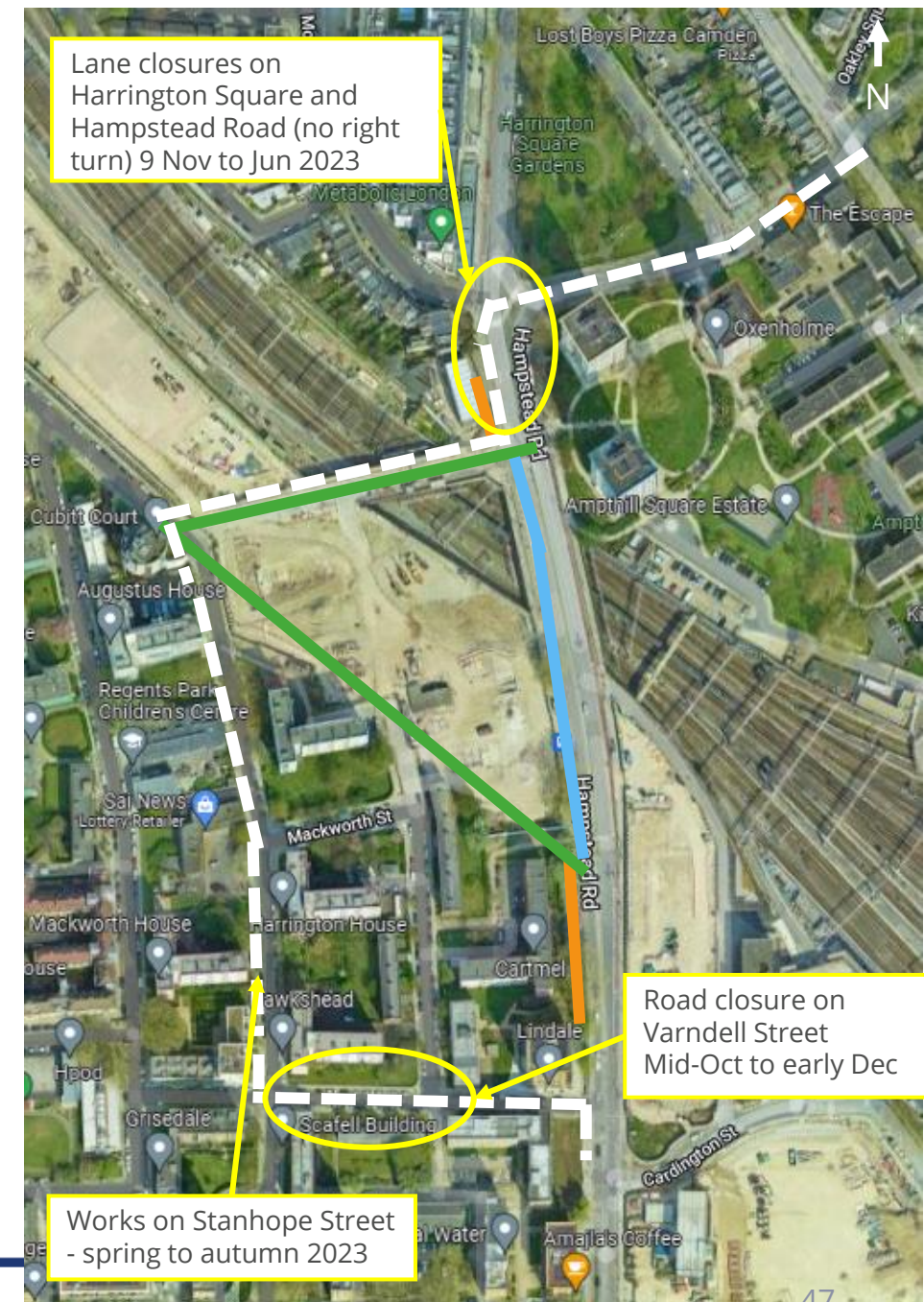


Hampstead Road permanent utility works

- New cable route between Lidlington Place and Varndell Street to replace existing route (white).

Dates are subject to change. We will provide updates as works progress.

Classification - Public



Euston Approaches engagement | 3-month lookahead

Nov 2022	Dec 2022	Jan 2023
<ul style="list-style-type: none">• 121s as required (inc noise insulation, asset protection etc)• Regent's Park estate pop-up (weekly)• Surma Community Centre check in and support• Community traffic working group (monthly)• Cartmel piling engagement• Third Age Partnership check in and support• North Bridge House Prep School catch-up• Special cases panel meeting (TBC)• Park Village Studios meeting (monthly)• The Crown Estate meetings (fortnightly) and site visit as required• Quarterly ECRG	<ul style="list-style-type: none">• 121s as required (inc noise insulation, NR parking zone, asset protection etc)• Regent's Park estate pop-up (weekly)• Surma Community Centre check in and support• Community traffic working group (monthly)• Cartmel piling engagement• Third Age Partnership check in and support• North Bridge House Prep School catch-up• Special cases panel meeting (TBC)• Park Village Studios meeting (monthly)• The Crown Estate meetings (fortnightly) and site visit as required• Amphthill show flat for noise insulation	<ul style="list-style-type: none">• 121s as required (inc noise insulation, NR parking zone, asset protection etc)• Regent's Park estate pop-up (weekly)• Surma Community Centre check in and support• Community traffic working group (monthly)• Cartmel piling engagement• Third Age Partnership check in and support• North Bridge House Prep School catch-up• Special cases panel meeting (TBC)• Park Village Studios meeting (monthly)• The Crown Estate meetings (fortnightly) and site visit as required• NR parking zone workshop or site walk with CoRA

HS2

12 month lookahead

December 2022

Please click on the link for works lookahead

[Search current works \(text only\) - HS2](#)

HS2

6. Flash Report

- To note the report

HS2

7. Actions Log

David Demolder

HS2

8.Community Questions/AOB

David Demolder and Matt Hollier

HS2

9. Minutes of the last meeting and Matters Arising

David Demolder and Matt Hollier

HS2

Dates of Next Meeting