

Notice of installation of traffic cameras

November 2022 | www.hs2.org.uk

High Speed Two (HS2) is the new high speed railway for Britain.

Works planned on Harrow Road, Banister Road and Salusbury Road

From 28 November to 1 December 2022, we will be installing traffic management cameras on Harrow Road, Banister Road and Salusbury Road. The cameras will be installed onto existing lamp columns via a mobile platform from either a bus lane, cycle lane, pedestrian footway, or parking bay (location dependent).

These cameras will be in place for the duration of the HS2 works to monitor lorry movements to and from HS2 sites.

How this might affect you

We will have a temporary lane closure, footpath closure and traffic management in place whilst the cameras are installed. The bus stops on Harrow Road, Banister Road and Chamberlayne Road will be suspended temporarily for the duration of these works. The bus stop which will be suspended are:

- **Bus Stop V** Ladbroke Grove/Kilburn Lane
- **Bus Stop KL** Wakeman Road
- **Bus Stop KK** Kilburn Lane Kensal Rise
- **Bus Stop KS** Banister Road
- **Bus Stop KM** Banister Road

We will be working as efficiently as possible whilst keeping our work areas safe and tidy.

You can view a map showing the location of these works on the next page. Please note the dates for the surveys may change. You can view our latest works updates at <https://www.hs2.org.uk/in-your-area/map/>

If you have a question about HS2 or our works, please contact our HS2 Helpdesk team on 08081 434 434 or email hs2enquiries@hs2.org.uk

Notification



Duration of works

28 November to 1 December 2022

Working hours

Monday to Friday
between 9.30am to 4.30pm

We may be on site for an hour before the start and/or end of the shift

What to expect

Temporary road narrowing, lane closure, partial footway closure and bus stop suspensions will be in place on the ...

What we will do

Continue to monitor our working methods to ensure they are safe and reduce disruption to the local community

Provide updates at

www.hs2.org.uk/in-your-area/map

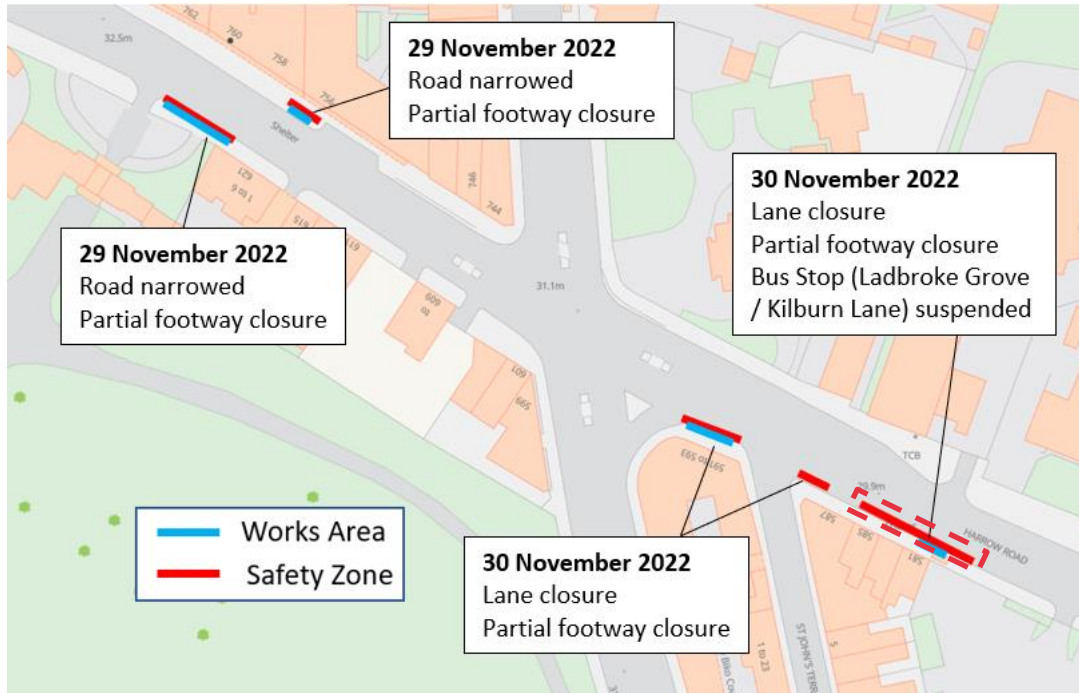
Notice of installation of traffic cameras

Notification

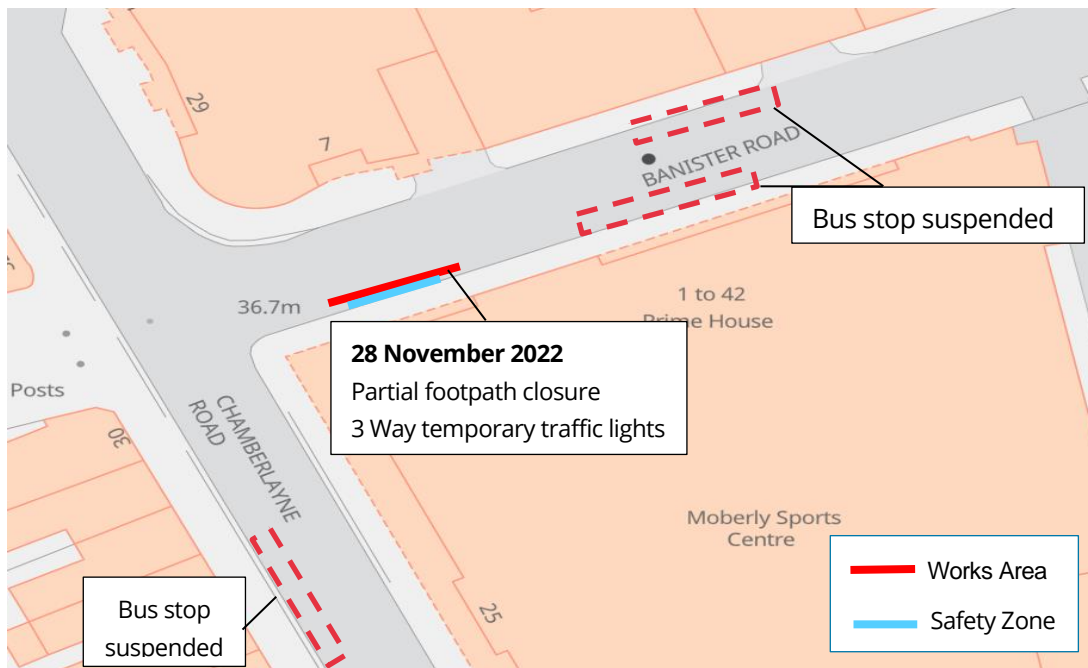


www.hs2.org.uk

Harrow Road – 29 to 30 November 2022

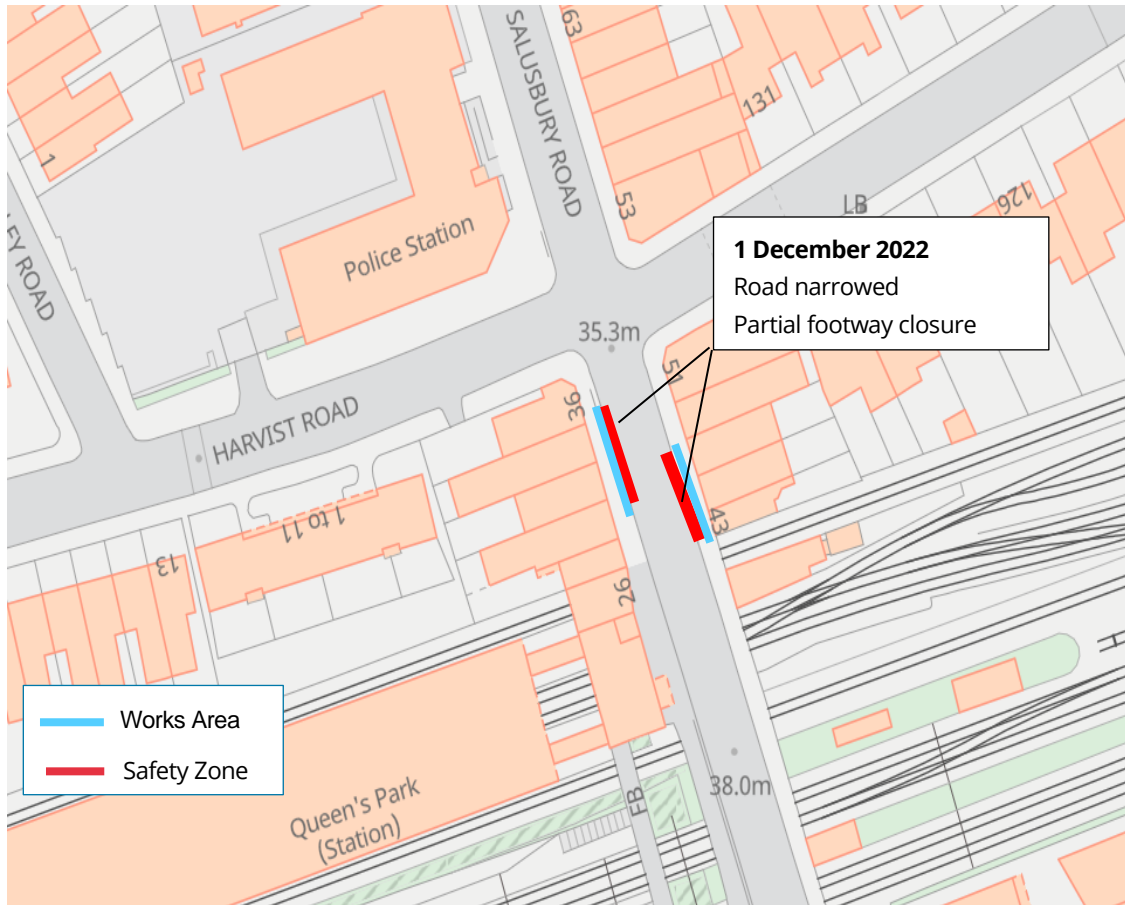


Banister Road on 28 November 2022



Contact our HS2 Helpdesk team on **08081 434 434**

Salisbury Road on 1 December 2022



Speak with your local engagement team

If you have any questions about these works, our local engagement team are happy to arrange a time to speak with you. Please contact the HS2 Helpdesk to request a one-to-one with the local engagement team.

You can also keep up to date with what is happening in your local area by visiting the HS2 interactive map at www.hs2.org.uk/in-your-area/map

Keeping you informed

We are committed to keeping you informed about work on HS2. This includes ensuring you know what to expect and when to expect it, as well as how we can help you.

The Residents' Commissioner

The independent Residents' Commissioner oversees and monitors our commitments to you.

The commissioner's reports and our responses can be found at www.gov.uk/government/collections/hs2-ltd-residents-commissioner

The Residents' Commissioner makes sure we fulfil the commitments in the HS2 Community Engagement Strategy (<https://bit.ly/3oOA25j>).

The Residents' Commissioner can be contacted on: residentscommissioner@hs2.org.uk

Construction Commissioner

The independent Construction Commissioner regularly meets our Chief Executive Officer to raise any concerns or emerging trends across HS2.

The Construction Commissioner's role has been developed to monitor the way we manage and respond to construction complaints.

The commissioner mediates on disputes about construction, involving individuals and organisations, that we can't resolve. The commissioner advises members of the public about how to make a complaint about construction.

The Construction Commissioner can be contacted on: complaints@hs2-cc.org.uk

Property and compensation

You can find out about HS2 and properties along the route by visiting:

www.gov.uk/government/collections/hs2-property

Find out if you can claim compensation at:

www.gov.uk/claim-compensation-if-affected-by-hs2

Holding us to account

If you are unhappy for any reason you can make a complaint by contacting the HS2 Helpdesk. For more details on our complaints process, please visit:

www.hs2.org.uk/in-your-area/contact-us/how-to-complain/

Contact us

Contact our HS2 Helpdesk team all day, every day of the year on:

 Freephone **08081 434 434**

 Minicom **08081 456 472**

 Email **HS2enquiries@hs2.org.uk**

Write to:

FREEPOST

HS2 Community Engagement

Website **www.hs2.org.uk**

To keep up to date with what is happening in your local area, visit:
www.HS2inyourarea.co.uk

Please contact us if you'd like a free copy of this document in large print, Braille, audio or 'easy read' format. You can also contact us for help and information in a different language.

HS2 Ltd is committed to protecting personal information. If you wish to know more about how we use your personal information please see our Privacy Notice:
<https://www.gov.uk/government/publications/high-speed-two-ltd-privacy-notice>

Reference number: HS2-EW-SCS-Ph1-Ar-So-S2-Traf-1-02/11/2022

High Speed Two (HS2) Limited, registered in England and Wales.

Registered office: Two Snowhill, Snow Hill Queensway, Birmingham B4 6GA.

Company registration number: 06791686. VAT registration number: 888 8512 56