

HS2

Notice of Ground investigations works near Madeley, Staffordshire.

High Speed Two (HS2) is the new high speed railway for Britain. Working on behalf of HS2 Ltd, National Grid Electricity Distribution (NGED) are carrying out site surveys and assessments in the Madeley area.

What we are doing

Due to the planned future HS2 railway, NGED has been asked to build a new substation for HS2 to power their tunnel boring machine.

In preparation for this construction, NGED will be carrying out ground investigations to determine the structure of the subsoils that will determine the design of the site foundations. NGED work site is the area is shown in the yellow box on the map attached.

A towable trailer mounted drilling rig will be used to carry out various boreholes on the site to a depth of 10-15 meters. We will be setting up a small compound area on site to house the welfare for the workers.

How will this affect you

NGED will carry out the work during the day, from 8am to 6pm Monday to Friday. The works are within rural fields so there should be minimal disruption to the local communities of Madeley. However, you may notice the sound of the drilling rigs. This is planned to be low level and will be kept to the minimum.

Covid-19

NGED are continually reviewing the works on all construction sites in line with the Government and Public Health England (PHE) advice on dealing with coronavirus. The Government's current coronavirus strategy makes clear that construction activity can continue as long as it complies with this guidance. The health and safety of our workforce and the communities we affect is our key priority. Please be assured that sites that are currently still working are doing so because they can operate within PHE and construction industry guidelines.

If you have a question about HS2 or our works, please contact our helpdesk on 08081 434 434 or email HS2enquiries@hs2.org.uk

Notification



Duration of works

7th November 2022 for two weeks.

Our working hours will be 8am to 6pm (Mon - Fri)

What to expect

Minimal disruption to the local community.

Slight increase in construction traffic while we carry out the work.

Possible sound from the drilling rigs, which is planned to be low level and will be kept to the minimum.

What we will do

Notify people of any changes to the activity.

Works Location Map

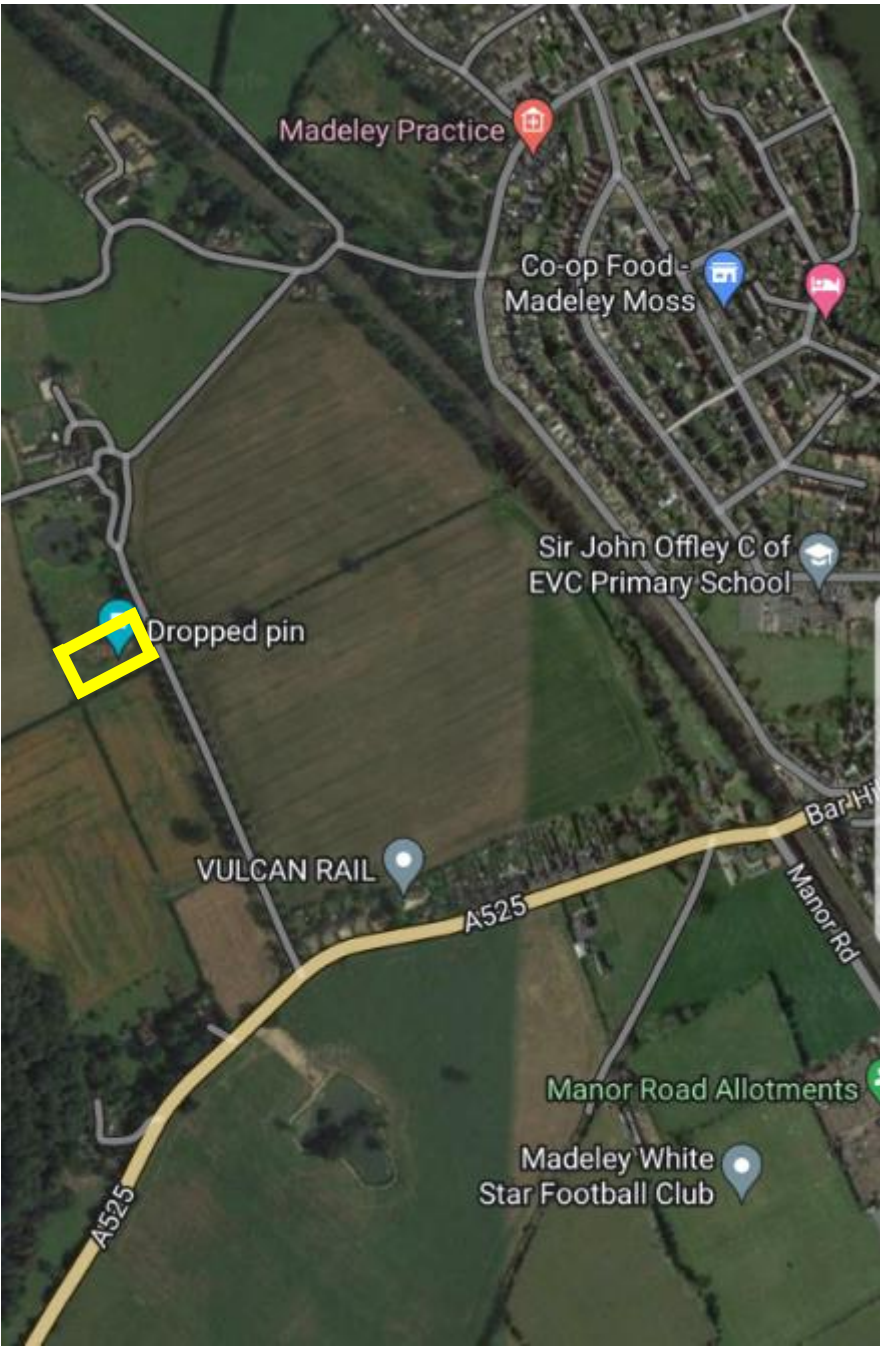


Fig 1: Image showing centre of works activity.

Keeping you informed

We are committed to keeping you informed about work on HS2. This includes ensuring you know what to expect and when to expect it, as well as how we can help.

Residents' Charter and Commissioner

The Residents' Charter is our promise to communicate as clearly as we possibly can with people who live along or near the HS2 route.
www.gov.uk/government/publications/hs2-residents-charter

We also have an independent Residents' Commissioner whose job is to make sure we keep to the promises we make in the Charter and to keep it under constant review. Find reports at:
www.gov.uk/government/collections/hs2-ltd-residents-commissioner
You can contact the Commissioner at:
residentscommissioner@hs2.org.uk

Construction Commissioner

The Construction Commissioner's role is to mediate and monitor the way in which HS2 Ltd manages and responds to construction complaints. You can contact the Construction Commissioner by emailing:
complaints@hs2-cc.org.uk

Property and compensation

You can find out all about HS2 and properties along the line of route by visiting:
www.gov.uk/government/collections/hs2-property
Find out if you're eligible for compensation at:
www.gov.uk/claim-compensation-if-affected-by-hs2

Holding us to account

If you are unhappy for any reason you can make a complaint via the helpline. For more details on our complaints process, please visit our website:
www.hs2.org.uk/how-to-complain

Contact Us

If you have any questions about this notification of works, please get in touch.

 24/7 Freephone **08081 434 434**

 Minicom **08081 456 472**

 Email **HS2enquiries@hs2.org.uk**

Write to:

FREEPOST

HS2 Community Engagement

Website **www.hs2.org.uk**

To keep up to date with what is happening in your local area, visit:
www.hs2.commonplace.is

Please contact us if you'd like a free copy of this document in large print, Braille, audio or easy read. You can also contact us for help and information in a different language.

HS2 Ltd is committed to protecting personal information. If you wish to know more about how we use your personal information please see our Privacy Notice
<https://www.gov.uk/government/publications/high-speed-two-ltd-privacy-notice>

HS2 Helpdesk Ref: **HS2-EW-UT-PH2A-Prog-works-32-05/10/2022**

High Speed Two (HS2) Limited, registered in England and Wales. Registered office: Two Snowhill, Snow Hill Queensway, Birmingham B4 6GA. Company registration number: 06791686. VAT registration number: 181 4312 30.