

Notification



Update on utility and construction works on Harvil Road

October 2022 | www.hs2.org.uk

High Speed Two (HS2) is the new high speed railway for Britain.

You can sign up for regular updates in your local area at hs2inhillington.co.uk.

HS2 & SCSJV Information Hub

Our Community Information Hub is open for drop-ins every **Monday** and **Wednesday** from **2pm** to **4pm**.

Our Community Engagement team will be available to answer your questions about the project and the works in Hillingdon and Northolt. You can find us in the portacabin on the right of West Ruislip Portal entrance on Ickenham Road.

What we are doing

We wrote to you recently to let you know that we plan to complete major utility diversion works and realign a section of Harvil Road from 30 August 2022 to 5 September 2023.

We need to carry out some additional work during the school half term, from 24 to 29 October 2022. We will relocate one of our site entrances to help facilitate the Harvil Road realignment. These works will require a lane closure. We will be working in the area shown on the map overleaf.

We will be carrying out the main utility works and constructing the new road realignment simultaneously. The works will involve:

- Installation of water main and communication ducting
- Diversion of existing utilities into new utility corridor
- Chamber construction (water and communication)
- Existing road demolition
- Highway & drainage construction
- Surfacing, white lining, and street furniture
- Site fencing realignment

The overall scheme will be completed in three phases between late August 2022 and early September 2023, with the main construction works taking place within our site boundary on Harvil Road.

We would like to apologise in advance for any disruption or inconvenience this may cause. Every effort is being taken to ensure that these works are carried out in the least impactful way. We will ensure that disruption is kept to a minimum.

If you have a question about HS2 or our works, please contact our HS2 Helpdesk team on 08081 434 434 or email hs2enquiries@hs2.org.uk

Duration of works

Ongoing until 5 September 2023

Monday to Saturday 8 am to 6pm

Sunday 10am to 4pm

What to expect

Lane closure and temporary traffic signage

We will need to extend our normal working hours to reduce the overall time needed to complete these works

Operatives in the work area, as well as barriers and excavation equipment

Your utility services will not be affected

What we will do

Maintain access to your property at all times

Keep disruption to a minimum

Provide updates at

HS2inHillingdon.co.uk

Update on utility and construction works on Harvil

www.hs2.org.uk

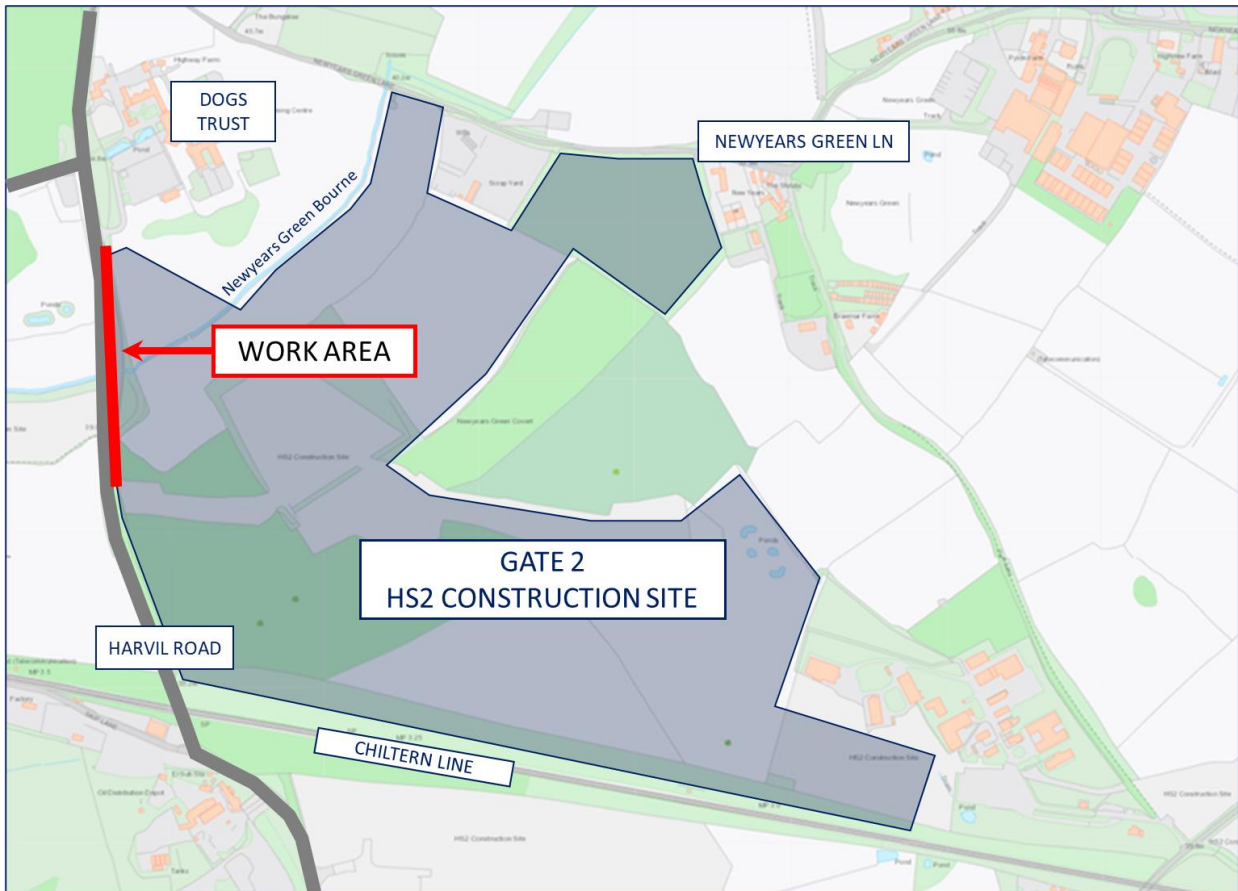
Notification



How these works will affect you

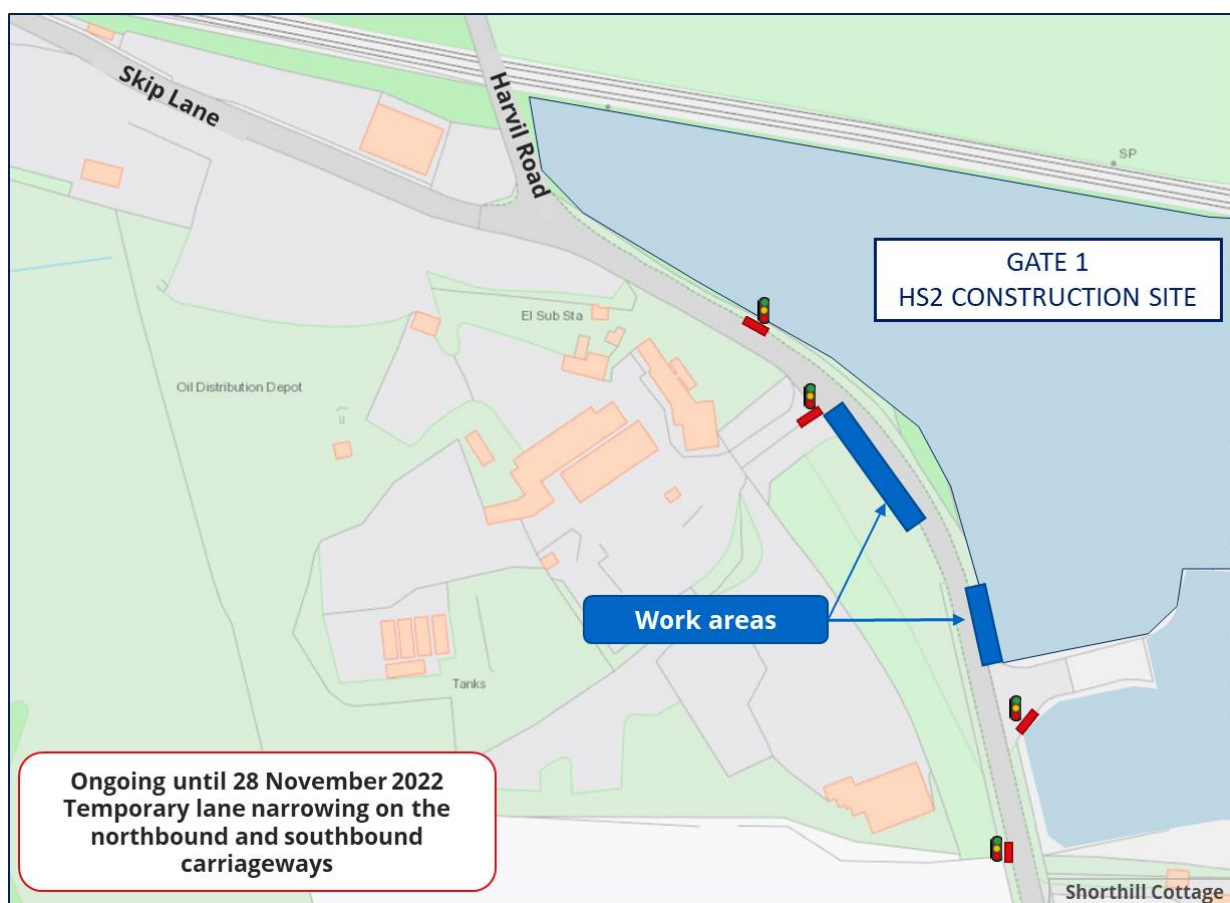
The relocation work will be restricted to a lane closure monitored by temporary traffic lights.

During the lane closure, access will be maintained for residents, emergency services, the Dogs Trust and businesses along Harvil Road.



Contact our HS2 Helpdesk team on **08081 434 434**

Locations and duration of works	Description of temporary traffic management
<p>Ongoing to 28 November 2022: Installing of water main and communications cabling (BT) on Harvil Road either side of the carriageway opposite the SCS gate 1 site entrance</p>	<ul style="list-style-type: none"> • Four-way traffic lights on Harvil Road, southbound and northbound between oil depot and Shorthill Cottage • We will install a north and southbound priority narrowing lane as a safety measure due to the proximity of services



Keeping you informed

We are committed to keeping you informed about work on HS2. This includes ensuring you know what to expect and when to expect it, as well as how we can help.

Residents' Charter and Commissioner

The Residents' Charter is our promise to communicate as clearly as we possibly can with people who live along or near the HS2 route.
www.gov.uk/government/publications/hs2-residents-charter

We also have an independent Residents' Commissioner whose job is to make sure we keep to the promises we make in the Charter and to keep it under constant review. Find reports at:
www.gov.uk/government/collections/hs2-ltd-residents-commissioner

You can contact the Commissioner at:
residentscommissioner@hs2.org.uk

Construction Commissioner

The Construction Commissioner's role is to mediate and monitor the way in which HS2 Ltd manages and responds to construction complaints. You can contact the Construction Commissioner by emailing:
complaints@hs2-cc.org.uk

Property and compensation

You can find out all about HS2 and properties along the line of route by visiting:
www.gov.uk/government/collections/hs2-property
Find out if you're eligible for compensation at:
www.gov.uk/claim-compensation-if-affected-by-hs2

Holding us to account

If you are unhappy for any reason you can make a complaint by contacting our HS2 Helpdesk team. For more details on our complaints process, please visit our website:
www.hs2.org.uk/how-to-complain

Contact Us

Contact our HS2 Helpdesk team all day, every day of the year on:

 Freephone **08081 434 434**

 Minicom **08081 456 472**

 Email **hs2enquiries@hs2.org.uk**

Write to:

FREEPOST

HS2 Community Engagement

Website **www.hs2.org.uk**

To keep up to date with what is happening in your local area, visit:
www.hs2inyourarea.co.uk

Please contact us if you'd like a free copy of this document in large print, Braille, audio or easy read. You can also contact us for help and information in a different language.

HS2 Ltd is committed to protecting personal information. If you wish to know more about how we use your personal information please see our Privacy Notice
<https://www.gov.uk/government/publications/high-speed-two-ltd-privacy-notice>

Reference number: Ref HS2-EW-SCS-Ph1-Ar-So-S2-UT-1-11/08/2022_02

High Speed Two (HS2) Limited, registered in England and Wales.

Registered office: Two Snowhill, Snow Hill Queensway, Birmingham B4 6GA.

Company registration number: 06791686. VAT registration number: 888 8512 56.