

# Update: Hoarding removal and partial site demobilisation on Wormwood Scrubs

## Notification



High Speed Two (HS2) is the new high speed railway for Britain.

We are continuing our work to divert utilities cables and an existing sewer on Wormwood Scrubs. You can find out more about our works, including our latest works updates here: <https://www.hs2.org.uk/in-your-area/local-community-webpages/hs2-in-old-oak-and-north-acton/wormwood-scrubs/>

### Stamford Brook Sewer (SBS) site compound demobilisation

You have previously been notified that we have been diverting an existing sewer on Wormwood Scrubs. This work has now been completed and from the 17 October 2022 we will begin to demobilise the SBS site compound. Please see a map of the location of these works on the page overleaf. The Undertrack Crossing (UTX) compound closest to Old Oak Common Lane will remain in place as we continue to divert utility cables.

As well as the SBS compound, the access road leading to Old Oak Common Lane will also be removed. This area (highlighted in yellow on the map overleaf) will be excavated using diggers and will be reinstated with previously excavated material. Once the excavated material has been backfilled, a layer of topsoil will be placed on top. Finally, a grass seed mix, as approved by LBFH's Parks Management team and reflecting the scrubs' seedbank, will be sown on the topsoil. This will begin depending on weather conditions. Once this is completed, the area will be cordoned off by rope and posts to protect the new grass seed while it grows.

This work will be taking place within the site boundary during our normal working hours. The welfare facilities will also be removed from this compound.

**If you have a question about HS2 or our works, please contact our HS2 Helpdesk team on 08081 434 434 or email [hs2enquiries@hs2.org.uk](mailto:hs2enquiries@hs2.org.uk)**

### Duration of works

Works will commence from 17 October 2022 until early 2023, between 8am and 6pm Monday to Friday. Saturday 8am – 1pm if required.

### What to expect

Construction vehicles including digger movements and wagons.

The ground will be reinstated with excavated material and topsoil.

Once work is completed, the hoarding will be removed.

### What we will do

We will use best practicable means to minimise any impact on our site neighbours.

# Update: Hoarding removal and partial site demobilisation on Wormwood Scrubs

Notification



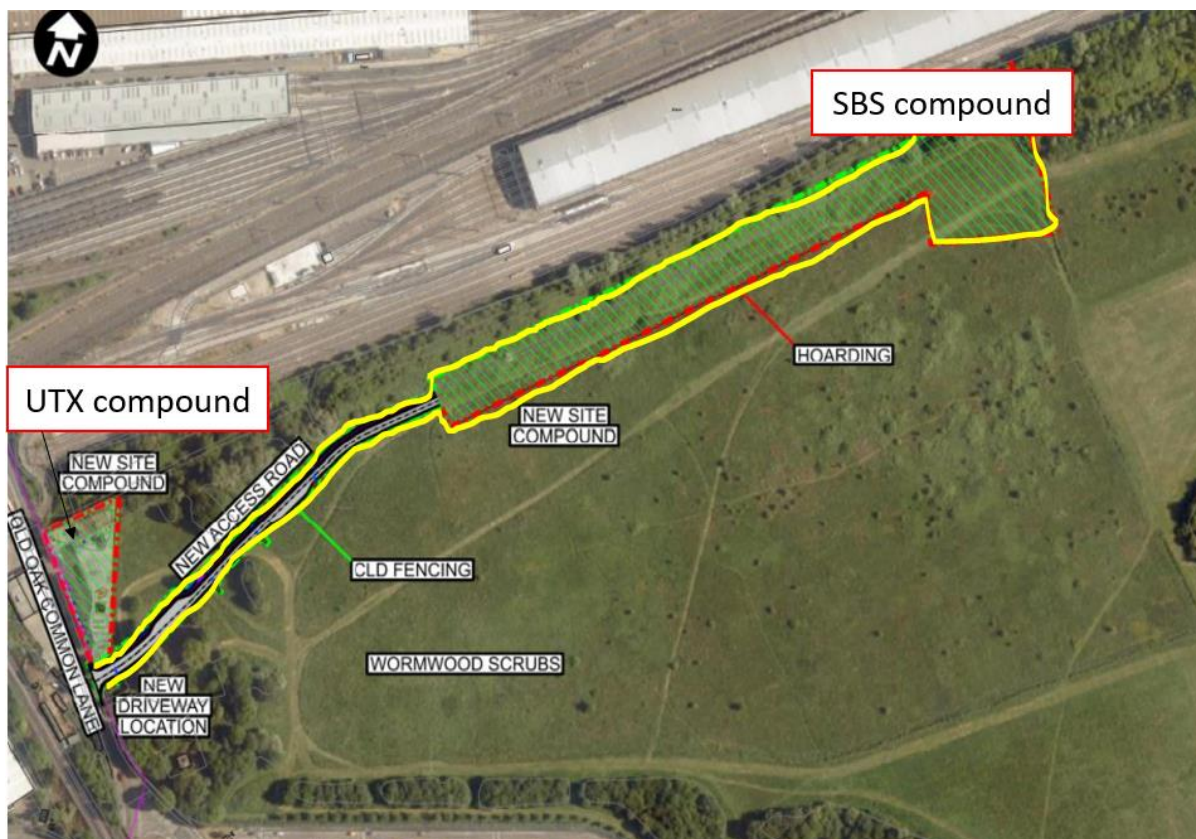
[www.hs2.org.uk](http://www.hs2.org.uk)

While the site is being demobilised and the haul road is being reinstated, the hoarding surrounding the compound will be progressively removed. As this takes place, temporary wire fencing will be put up to secure the compound until all work is complete. This fencing will then be removed at the final stage.

The reinstatement is in line with the planning conditions set out by London Borough of Hammersmith and Fulham. Ecology supervision will be undertaken if identified to be necessary during this work.

We will use best practicable means to minimise any impact on our site neighbours. The works will be carried out between 8am – 6pm Monday to Friday and Saturdays 8am – 1pm if required

## Map of the site compounds on Wormwood Scrubs



*The above image shows the two site working areas on Wormwood Scrubs. The area inside the yellow boundary is where the site is set to be demobilised and reinstated. The UTX compound outlined in red will remain in place.*

Contact our HS2 Helpdesk team on **08081 434 434**

# What else is happening in your area?

[www.hs2.org.uk](http://www.hs2.org.uk)

## Contact our HS2 Helpdesk team

Our team is here to listen and respond to your enquiry, complaint or feedback to help us be a good neighbour.

You can contact our Helpdesk team all day, every day of the year on:

Freephone: **08081 434 434**

Minicom: **08081 456 472**

Email: [hs2enquiries@hs2.org.uk](mailto:hs2enquiries@hs2.org.uk)

## Keep up-to-date with your local community website

To find out more about what's happening in your area and receive regular email updates, you can sign up to our local community websites at: [www.hs2inyourarea.co.uk](http://www.hs2inyourarea.co.uk).

## About our Community and Business Funds

We are offering two funds that are available to local communities and businesses between the West Midlands and London, to help with the disruption caused by our construction work. These are the Community and Environment Fund (CEF) and the Business and Local Economy Fund (BLEF).

The CEF is designed to give communities the opportunity to share in the benefits of HS2. It is an allocated fund that communities are able to apply for, to help to support local projects that aim to improve their local area.

The BLEF is designed to support local economies that may be disrupted by the construction of HS2. BLEF grants are for local business support organisations and local authorities to help maintain business activity in local communities.

For more information about each of these funds, including how to apply, please visit: <https://www.groundwork.org.uk/hs2funds>



# Keeping you informed

We are committed to keeping you informed about work on HS2. This includes ensuring you know what to expect and when to expect it, as well as how we can help you.

## Residents' Charter and Commissioner

The Residents' Charter is our promise to communicate as clearly as we possibly can with people who live along or near the HS2 route.  
[www.gov.uk/government/publications/hs2-residents-charter](http://www.gov.uk/government/publications/hs2-residents-charter)

We also have an independent Residents' Commissioner whose job is to make sure we keep to the promises we make in the Charter and to keep it under constant review. Find reports at:  
[www.gov.uk/government/collections/hs2-ltd-residents-commissioner](http://www.gov.uk/government/collections/hs2-ltd-residents-commissioner)

You can contact the Commissioner at:  
[residentscommissioner@hs2.org.uk](mailto:residentscommissioner@hs2.org.uk)

## Construction Commissioner

The Construction Commissioner's role is to mediate and monitor the way in which HS2 Ltd manages and responds to construction complaints. You can contact the Construction Commissioner by emailing:  
[complaints@hs2-cc.org.uk](mailto:complaints@hs2-cc.org.uk)

## Property and compensation

You can find out all about HS2 and properties along the line of route by visiting:  
[www.gov.uk/government/collections/hs2-property](http://www.gov.uk/government/collections/hs2-property)  
Find out if you're eligible for compensation at:  
[www.gov.uk/claim-compensation-if-affected-by-hs2](http://www.gov.uk/claim-compensation-if-affected-by-hs2)

## Holding us to account

If you are unhappy for any reason you can make a complaint by contacting our HS2 Helpdesk team. For more details on our complaints process, please visit our website:  
[www.hs2.org.uk/how-to-complain](http://www.hs2.org.uk/how-to-complain)

## Contact us

Contact our HS2 Helpdesk team all day, every day of the year on:

 Freephone **08081 434 434**

 Minicom **08081 456 472**

 Email **[HS2enquiries@hs2.org.uk](mailto:HS2enquiries@hs2.org.uk)**

Write to:

**FREEPOST  
HS2 Community Engagement**

Website **[www.hs2.org.uk](http://www.hs2.org.uk)**

To keep up to date with what is happening in your local area, visit:  
**[www.HS2inyourarea.co.uk](http://www.HS2inyourarea.co.uk)**

**Please contact us if you'd like a free copy of this document in large print, Braille, audio or 'easy read' format. You can also contact us for help and information in a different language.**

HS2 Ltd is committed to protecting personal information. If you wish to know more about how we use your personal information please see our Privacy Notice:  
<https://www.gov.uk/government/publications/high-speed-two-ltd-privacy-notice>

**Reference number: HS2-MW-BBVS-Ph1-OOC-St-S4-prog-works-61-02/10/2022**

High Speed Two (HS2) Limited, registered in England and Wales.  
Registered office: Two Snowhill, Snow Hill Queensway, Birmingham B4 6GA.  
Company registration number: 06791686. VAT registration number: 888 8512 56