

Notice of footpath diversion, Millennium Way, Boddington

December 2022 | www.hs2.org.uk

High Speed Two (HS2) is the new high speed railway for Britain. You can sign up for regular updates in your local area at www.hs2inyourarea.co.uk

What are we doing?

We have closed Claydon Road, near Lower Boddington for a minimum of two years in order to construct the Claydon Road overbridge.

There are two public rights of way (PRoW's) in the area near Claydon Road. Footpath AC1 and AC2, known as The Millennium Way, intersect our construction area.

Following the temporary closure of these footpaths in November 2022, walkers can follow a diversion route for these paths across our construction area. A map of the diversion route is available on the following page.

Once the Claydon Road overbridge is completed and the road re-opened, a pavement area on the bridge will allow footpaths AC1 and AC2 will cross the HS2 railway line.

When will these works take place?

We are constructing a diversion route for Footpath AC1 and AC2 (The Millennium Way) and anticipate that this will be open by 31 July 2025.

If you have a question about HS2 or our works, please contact our HS2 Helpdesk team on 08081 434 434 or email hs2enquiries@hs2.org.uk

If you have a question about HS2 or our works, please contact our HS2 Helpdesk team on 08081 434 434

Notification



Duration of works

Footpath AC1 and AC2, also known as the Millennium Way, will have a diversion in place until the work is complete on the 31 July 2025.

What to expect

Varied activities with both quiet and busier periods.

Diversion of PRoW's named AC1 and AC2 for approximately 32 months.

Noise from plant and equipment used for the earthworks.

What we will do

Manage any environmental impacts, such as traffic and noise.

Respond promptly to any complaints and take appropriate action.

Take care to respect the community.

Notice of footpath update, Millennium Way, Boddington

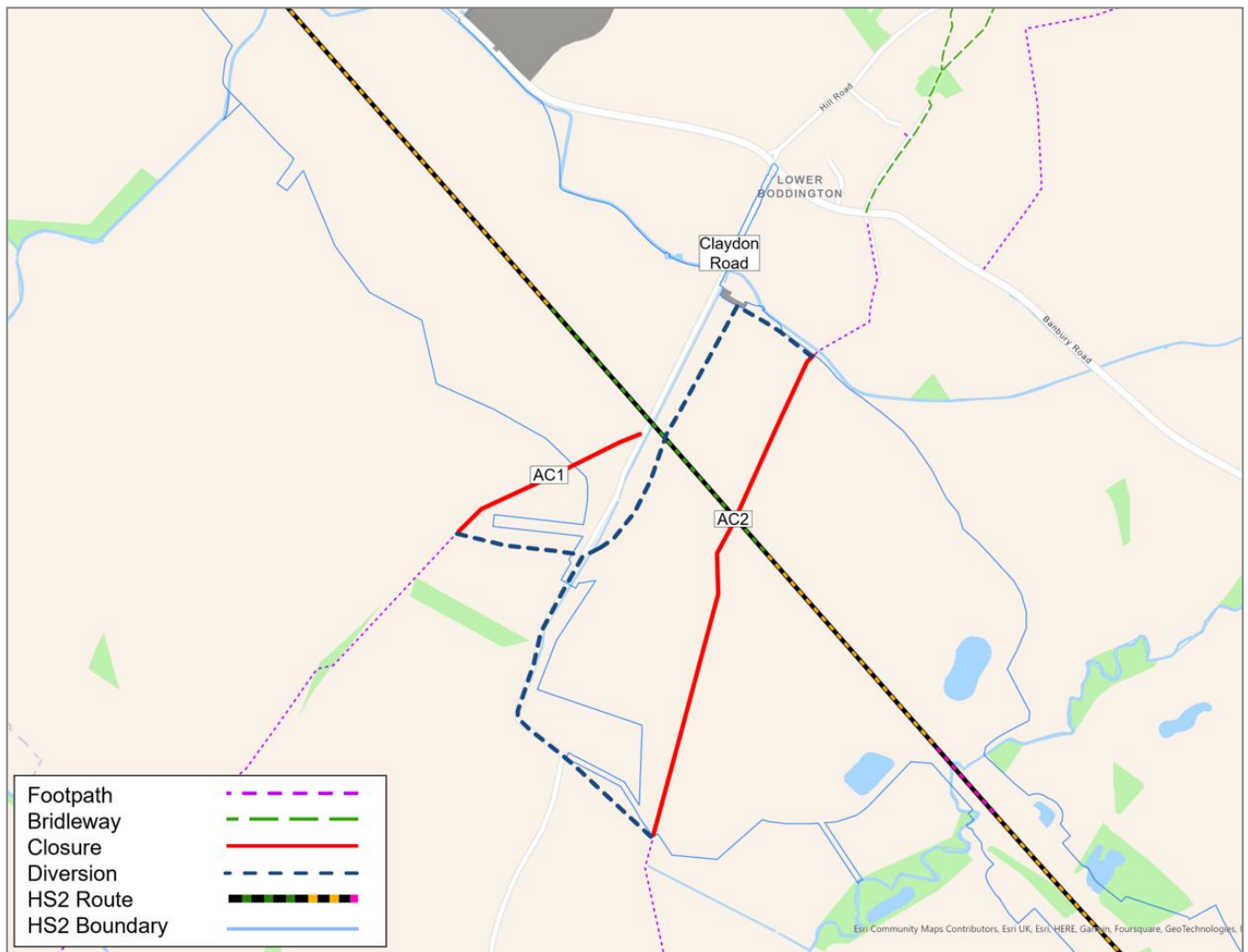
Notification



www.hs2.org.uk

Where will the works take place?

The map below shows the section of footpaths AC1 and AC2 that will be diverted. Directional signs indicate the section of footpath that is closed and the new diversion route.



Keeping you informed

We are committed to keeping you informed about work on HS2. This includes ensuring you know what to expect and when to expect it, as well as how we can help.

Residents' Charter and Commissioner

The Residents' Charter is our promise to communicate as clearly as we possibly can with people who live along or near the HS2 route.
www.gov.uk/government/publications/hs2-residents-charter

We also have an independent Residents' Commissioner whose job is to make sure we keep to the promises we make in the Charter and to keep it under constant review. Find reports at:
www.gov.uk/government/collections/hs2-ltd-residents-commissioner

You can contact the Commissioner at:
residentscommissioner@hs2.org.uk

Construction Commissioner

The Construction Commissioner's role is to mediate and monitor the way in which HS2 Ltd manages and responds to construction complaints. You can contact the Construction Commissioner by emailing:
complaints@hs2-cc.org.uk

Property and compensation

You can find out all about HS2 and properties along the line of route by visiting:
www.gov.uk/government/collections/hs2-property
Find out if you're eligible for compensation at:
www.gov.uk/claim-compensation-if-affected-by-hs2

Holding us to account

If you are unhappy for any reason you can make a complaint by contacting our HS2 Helpdesk team. For more details on our complaints process, please visit our website:
www.hs2.org.uk/how-to-complain

Contact Us

Contact our HS2 Helpdesk team all day, every day of the year on:

 Freephone **08081 434 434**

 Minicom **08081 456 472**

 Email **hs2enquiries@hs2.org.uk**

Write to:

FREEPOST

HS2 Community Engagement

Website **www.hs2.org.uk**

To keep up to date with what is happening in your local area, visit:
www.hs2inyourarea.co.uk

Please contact us if you'd like a free copy of this document in large print, Braille, audio or easy read. You can also contact us for help and information in a different language.

HS2 Ltd is committed to protecting personal information. If you wish to know more about how we use your personal information please see our Privacy Notice
<https://www.gov.uk/government/publications/high-speed-two-ltd-privacy-notice>

Reference number: HS2-MW-EK-Ph1-Ar-Ce-C3-Traf-50-26/10/2022

High Speed Two (HS2) Limited, registered in England and Wales.
Registered office: Two Snowhill, Snow Hill Queensway, Birmingham B4 6GA.
Company registration number: 06791686. VAT registration number: 888 8512 56.