

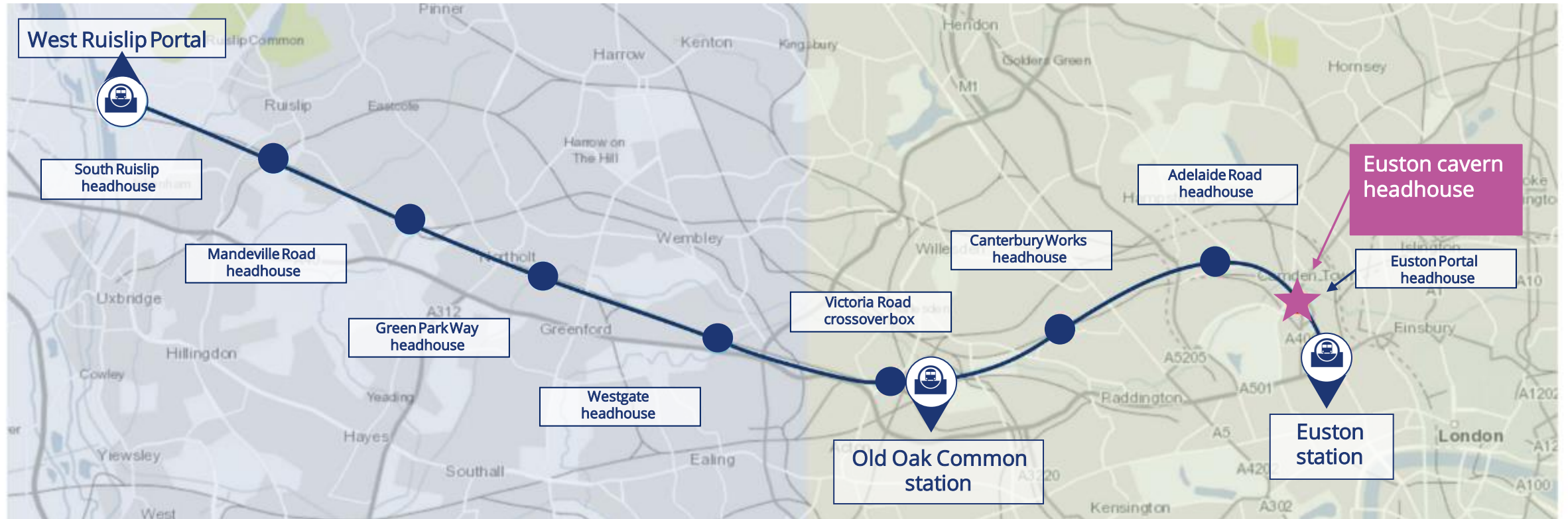
Euston Cavern Headhouse

Final design – You Said, We Did | August 2022

These slides show the updated final design for the Euston Cavern Headhouse.

Following conversations with stakeholders and community members in March 2021, we changed the street-level appearance of the headhouse to red brick.

Euston Cavern Headhouse location

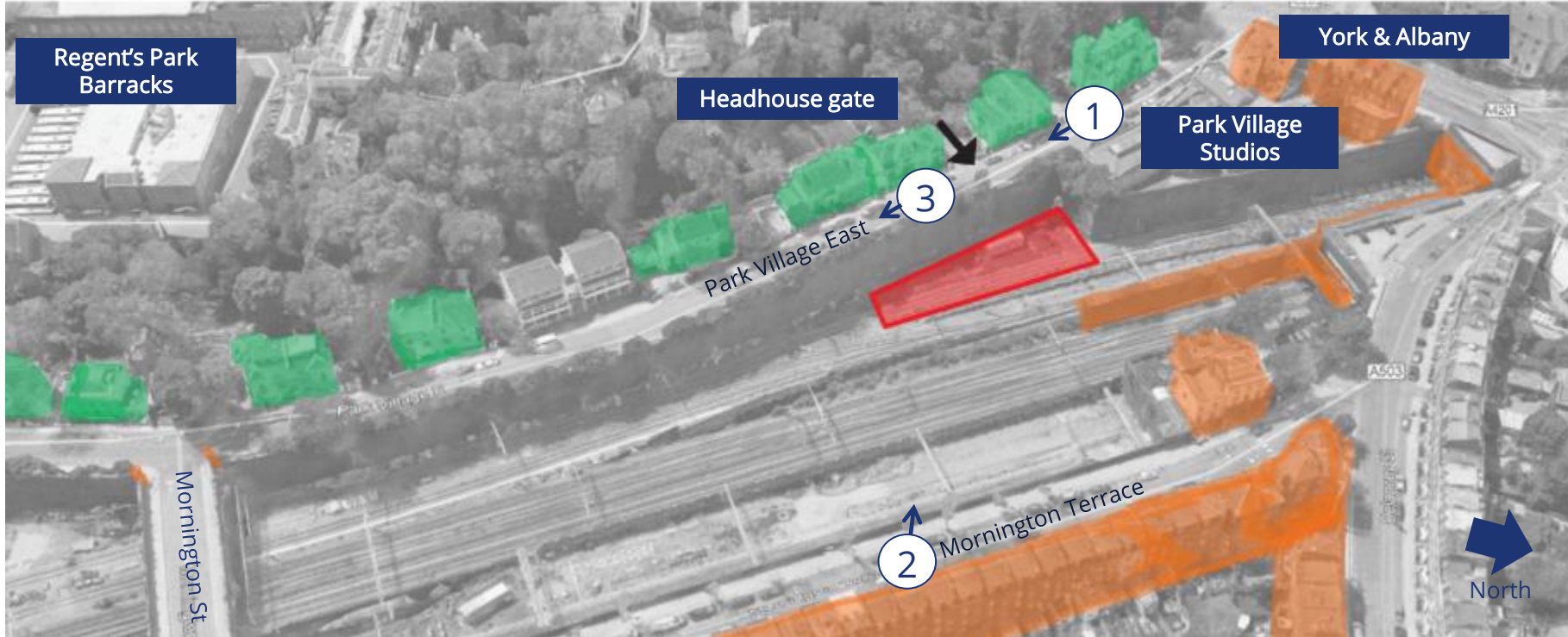





Skanska Costain STRABAG Joint Venture (SCSJV) is building HS2's Northolt tunnels west of London and the Euston tunnels and approaches.

SCS will build eight shafts to provide emergency access and ventilate the tunnels. Buildings called **headhouses** will be visible above the shafts. **Headhouses** contain lifts and mechanical and electrical equipment for the shaft below.

Local context

The cavern shaft and headhouse will be located in the railway cutting at the northern end of Park Village East.



-  Headhouse site
-  Heritage listed Grade II*
-  Heritage listed Grade II

The **Euston Cavern Headhouse** will provide emergency access. It will comprise three-storeys, with one storey visible above street level and two below. The final design is now complete and incorporates feedback received since 2018.

There will be a second shaft and headhouse above the Euston portal, between the Granby Terrace and Mornington Street bridges. A third headhouse that was planned in this location has been removed from the scheme.



View from Park Village East north

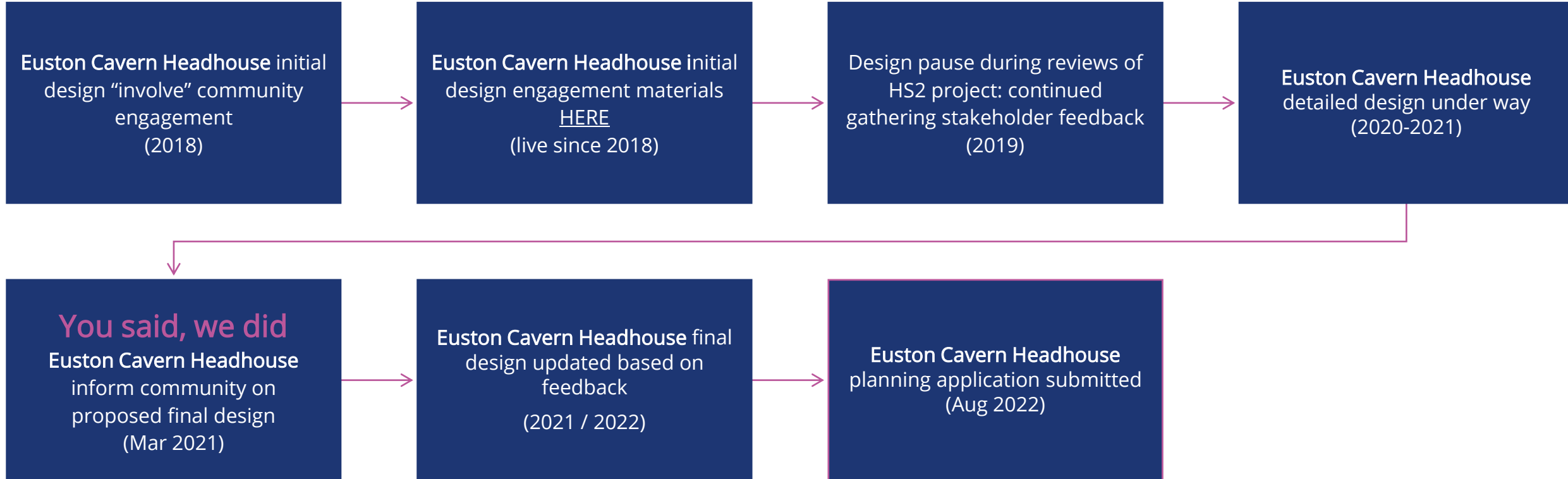


View from Mornington Terrace



View along Park Village East

Timeline – design and engagement for Euston Cavern Headhouse



Initial design

We started collecting community feedback about materials, planting and lighting on the initial design in 2018. Since then, during a design pause in 2019, we continued to gather feedback from stakeholders. Design restarted in 2020 and the planning application was submitted in mid-2021 and has now been approved. We now have our **final design** of the Euston Cavern Headhouse with further changes added, based on feedback received from residents.



The following slides show the **initial design**, the **final design** and the **changes** we made in response to the feedback we received.



Proposed final design



Proposed final design presented March 2021

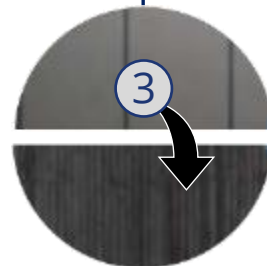
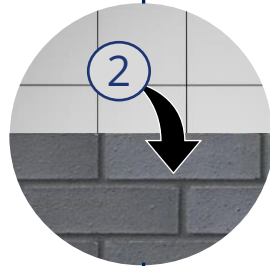
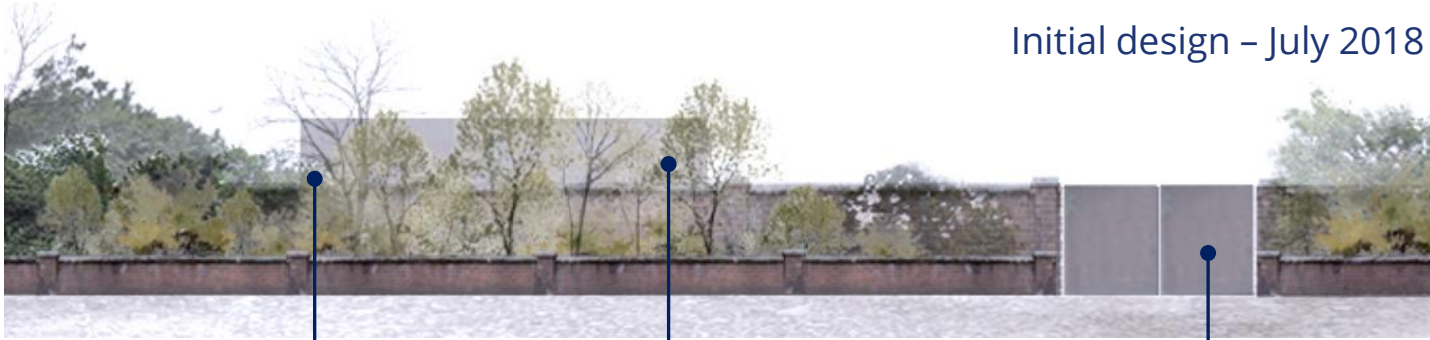
Updated final design



Updated final design - August 2022

Design evolution

Initial design – July 2018



Proposed final design – March 2021

You told us you would like to see the building blending in with nearby buildings and the railway

1. Building height reduced
2. Further greening of the roof, walls and planters
3. Brick facade, not metal or timber
4. Timber gate, not metal

These changes are explained in more detail in the March 2021 presentation available [here](#)

Design evolution



Proposed final design – March 2021

Following our conversations with community and stakeholders in March 2021, we changed the street-level cladding to a red brick to match the existing wall and planter



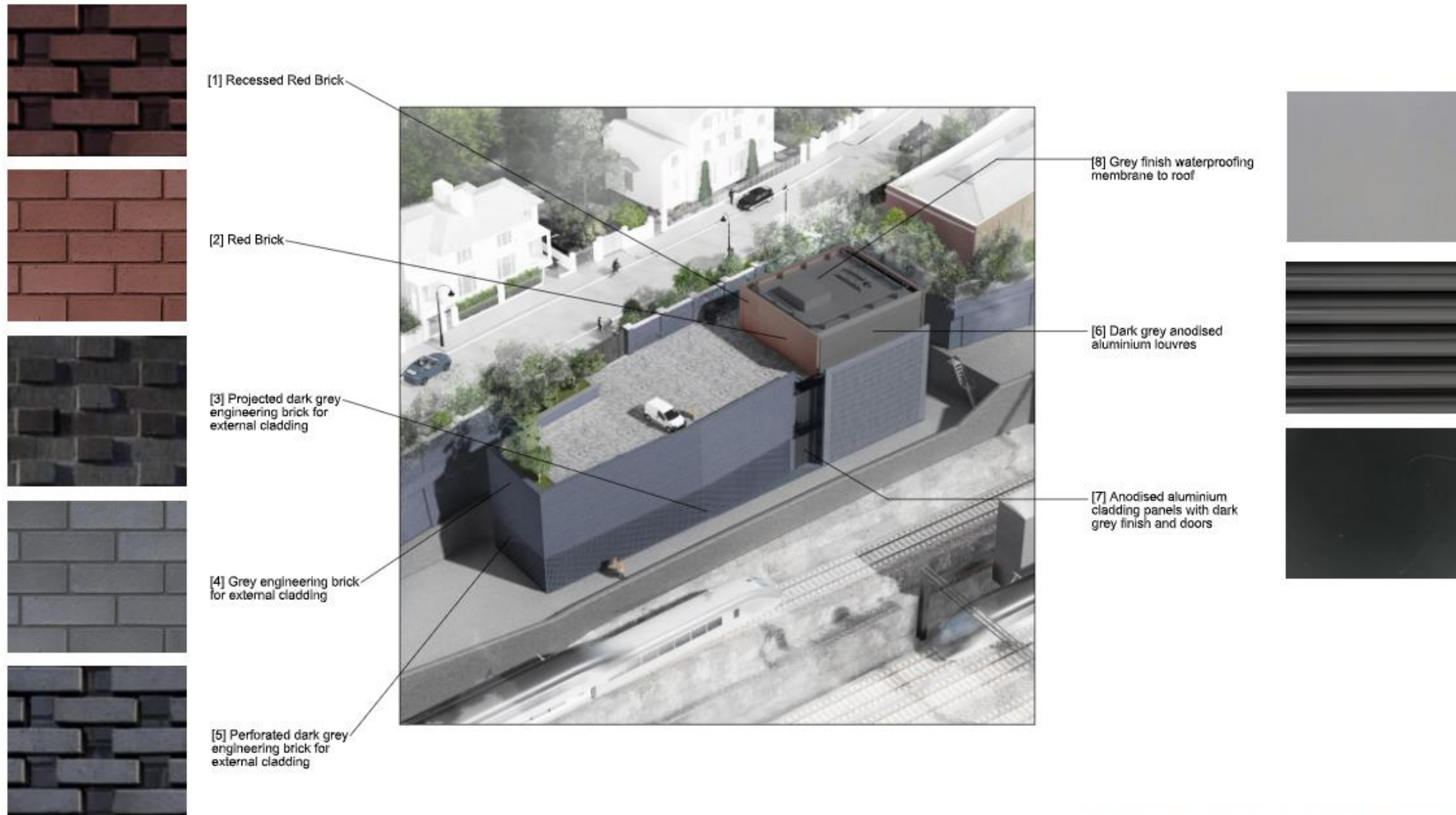
Updated final design – August 2022

We have finalised the design to best reflect the local area, whilst still being fit for purpose, with the least impact on our neighbours.

The next few slides cover the design and its evolution from 2018 to 2021 in more detail.



Final design – aerial view



Final design – view from Park Village East

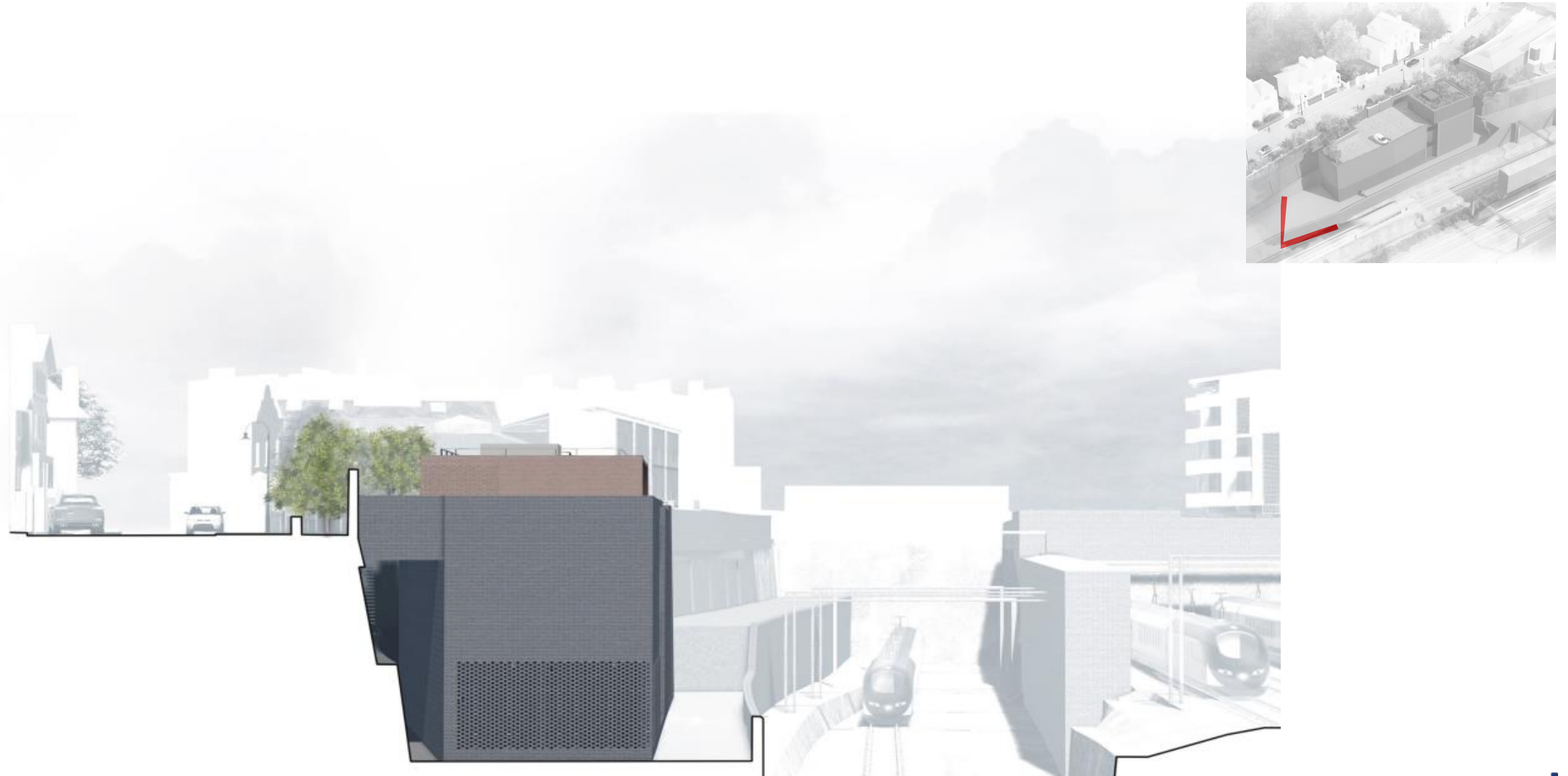


Indicative landscaping

Final design – view from railway



Final design – view from railway



Final design – view from Mornington Terrace

