

Update: Notice of limited vegetation maintenance along the site boundaries on Wormwood Scrubs

High Speed Two (HS2) is the new high speed railway for Britain

We are continuing our work to divert utilities cables and an existing sewer on Wormwood Scrubs. You can find out more about our works, including our latest works updates here: <https://www.hs2.org.uk/in-your-area/local-community-webpages/hs2-in-old-oak-and-north-acton/wormwood-scrubs/>

We previously wrote to you in July to notify you about these works. This work is now due to take place from 19 September.

Vegetation Maintenance on Wormwood Scrubs

Limited vegetation maintenance will be carried out along the inside and outside of all site metal fencing and hoarding on Wormwood Scrubs. A 1.5m corridor is needed along the outside of all site boundaries. This is required to maintain the existing clearance that previously took place in October 2021 and will also preserve the access to the footpaths. No trees will be removed.

We are completing this work from the 19 September so that it is completed outside of bird nesting season and before the reptile hibernation period starts.

We will need to maintain this level of clearance so that when we remove the fencing and hoarding to reinstate the ground, we do so without any further disturbance to wildlife. This is to maintain the level of vegetation until HS2 demobilise the SBS compound.

If there are adverse weather conditions over the coming months, we might need to delay the reinstatement to protect the topsoil. Given that there might be delays, it is important to keep the vegetation low throughout this time to prevent disturbing hibernating reptiles that may have hibernated later due to potential mild weather. Therefore, the vegetation maintenance will be repeated once in autumn and potentially again in early 2023.

Once the reinstatement is complete, it will be handed back to London Borough Hammersmith and Fulham.

Appropriate ecological control measures will be in place.

Please see a map of the location of these works overleaf.

Notification



Duration of works

Works will commence from 19 September 2022 and may take place again in early 2023, between 8am and 6pm Monday to Friday and Saturday 8am – 1pm if required.

What to expect

Limited vegetation maintenance will be carried out along the Wormwood Scrubs site boundaries in phases

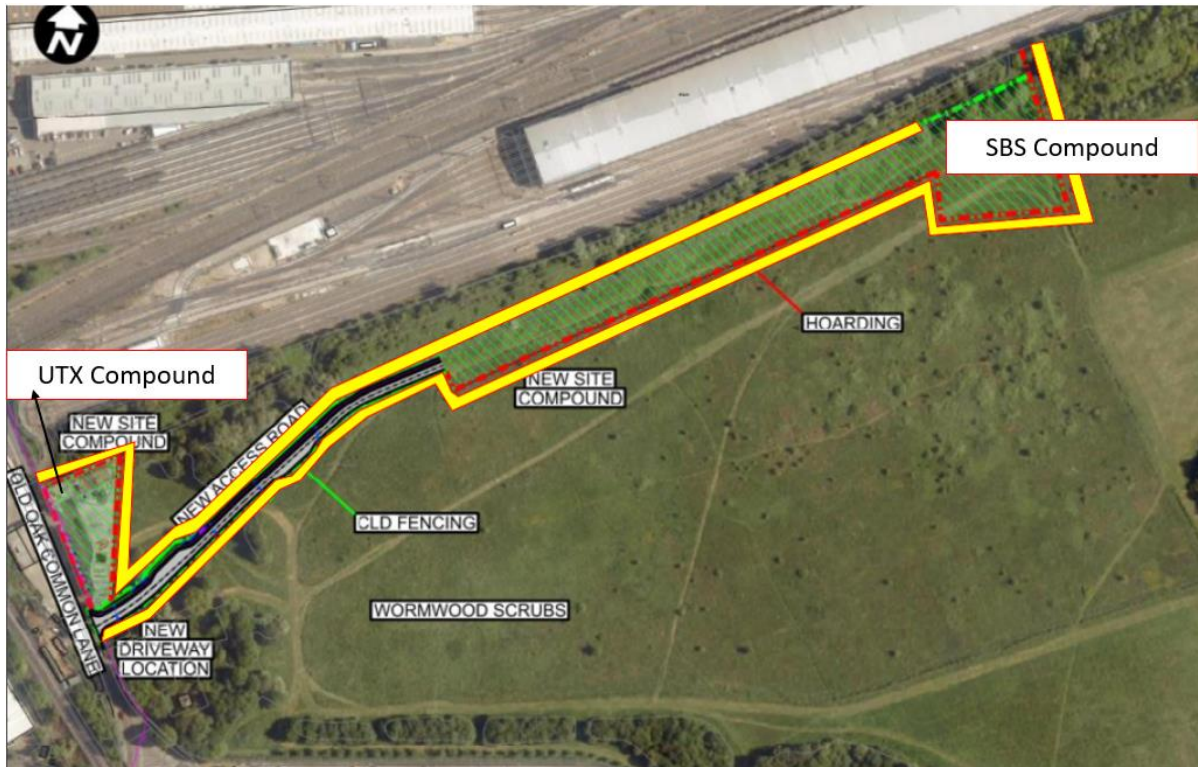
What we will do

Inspections will be completed by an ecologist, and all works will be completed under the direction of an ecologist

Update: Notice of limited vegetation maintenance along the site boundaries on Wormwood Scrubs

www.hs2.org.uk

Notification



The yellow shading on the above map shows where the 1.5m vegetation maintenance will take place on Wormwood Scrubs

Contact our HS2 Helpdesk team on **08081 434 434**

What else is happening in your area?

www.hs2.org.uk

Contact our HS2 Helpdesk team

Our team is here to listen and respond to your enquiry, complaint or feedback to help us be a good neighbour.

You can contact our Helpdesk team all day, every day of the year on:

Freephone: **08081 434 434**

Minicom: **08081 456 472**

Email: hs2enquiries@hs2.org.uk

Keep up-to-date with your local community website

To find out more about what's happening in your area and receive regular email updates, you can sign up to our local community websites at: www.hs2inyourarea.co.uk.

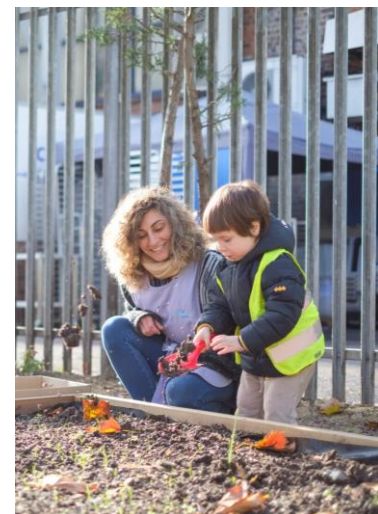
About our Community and Business Funds

We are offering two funds that are available to local communities and businesses between the West Midlands and London, to help with the disruption caused by our construction work. These are the Community and Environment Fund (CEF) and the Business and Local Economy Fund (BLEF).

The CEF is designed to give communities the opportunity to share in the benefits of HS2. It is an allocated fund that communities are able to apply for, to help to support local projects that aim to improve their local area.

The BLEF is designed to support local economies that may be disrupted by the construction of HS2. BLEF grants are for local business support organisations and local authorities to help maintain business activity in local communities.

For more information about each of these funds, including how to apply, please visit: <https://www.groundwork.org.uk/hs2funds>



Keeping you informed

We are committed to keeping you informed about work on HS2. This includes ensuring you know what to expect and when to expect it, as well as how we can help.

Residents' Charter and Commissioner

The Residents' Charter is our promise to communicate as clearly as we possibly can with people who live along or near the HS2 route.
www.gov.uk/government/publications/hs2-residents-charter

We also have an independent Residents' Commissioner whose job is to make sure we keep to the promises we make in the Charter and to keep it under constant review. Find reports at:
www.gov.uk/government/collections/hs2-ltd-residents-commissioner

You can contact the Commissioner at:
residentscommissioner@hs2.org.uk

Construction Commissioner

The Construction Commissioner's role is to mediate and monitor the way in which HS2 Ltd manages and responds to construction complaints. You can contact the Construction Commissioner by emailing:
complaints@hs2-cc.org.uk

Property and compensation

You can find out all about HS2 and properties along the line of route by visiting:
www.gov.uk/government/collections/hs2-property
Find out if you're eligible for compensation at:
www.gov.uk/claim-compensation-if-affected-by-hs2

Holding us to account

If you are unhappy for any reason you can make a complaint by contacting our HS2 Helpdesk team. For more details on our complaints process, please visit our website:
www.hs2.org.uk/how-to-complain

Contact Us

Contact our HS2 Helpdesk team all day, every day of the year on:

 Freephone **08081 434 434**

 Minicom **08081 456 472**

 Email **hs2enquiries@hs2.org.uk**

Write to:

FREEPOST

HS2 Community Engagement

Website **www.hs2.org.uk**

To keep up to date with what is happening in your local area, visit:
www.hs2inyourarea.co.uk

Please contact us if you'd like a free copy of this document in large print, Braille, audio or easy read. You can also contact us for help and information in a different language.

HS2 Ltd is committed to protecting personal information. If you wish to know more about how we use your personal information please see our Privacy Notice
<https://www.gov.uk/government/publications/high-speed-two-ltd-privacy-notice>

Reference number: HS2-MW-BBVS-Ph1-OOC-St-S4-prog-works-50-31/08/2022

High Speed Two (HS2) Limited, registered in England and Wales.
Registered office: Two Snowhill, Snow Hill Queensway, Birmingham B4 6GA.
Company registration number: 06791686. VAT registration number: 888 8512 56.