

# HS2

## Notice of WPD Construction Works on A446 Lichfield Road

September 2022 [www.hs2.org.uk](http://www.hs2.org.uk)

High Speed Two (HS2) is the new high speed railway for Britain.

### What are we doing?

Western Power Distribution (WPD) need to carry out work on their assets located on A446 Lichfield Road.

In order to undertake the work safely, a night-time road closure will be required on A446 Lichfield Rd North Bound between 12 midnight and 5am on Sunday 25<sup>th</sup> September 2022. A diversion will be in place

### How will this impact you?

WPDs Contractors will be working in the area highlighted red on the image below.

**If you have a question about HS2 or our works, please contact our helpdesk on 08081 434 434 or email [HS2enquiries@hs2.org.uk](mailto:HS2enquiries@hs2.org.uk)**

## Notification



### Duration

- Work will be undertaken on Sunday 25<sup>th</sup> September
- We will be working between 12am and 5am

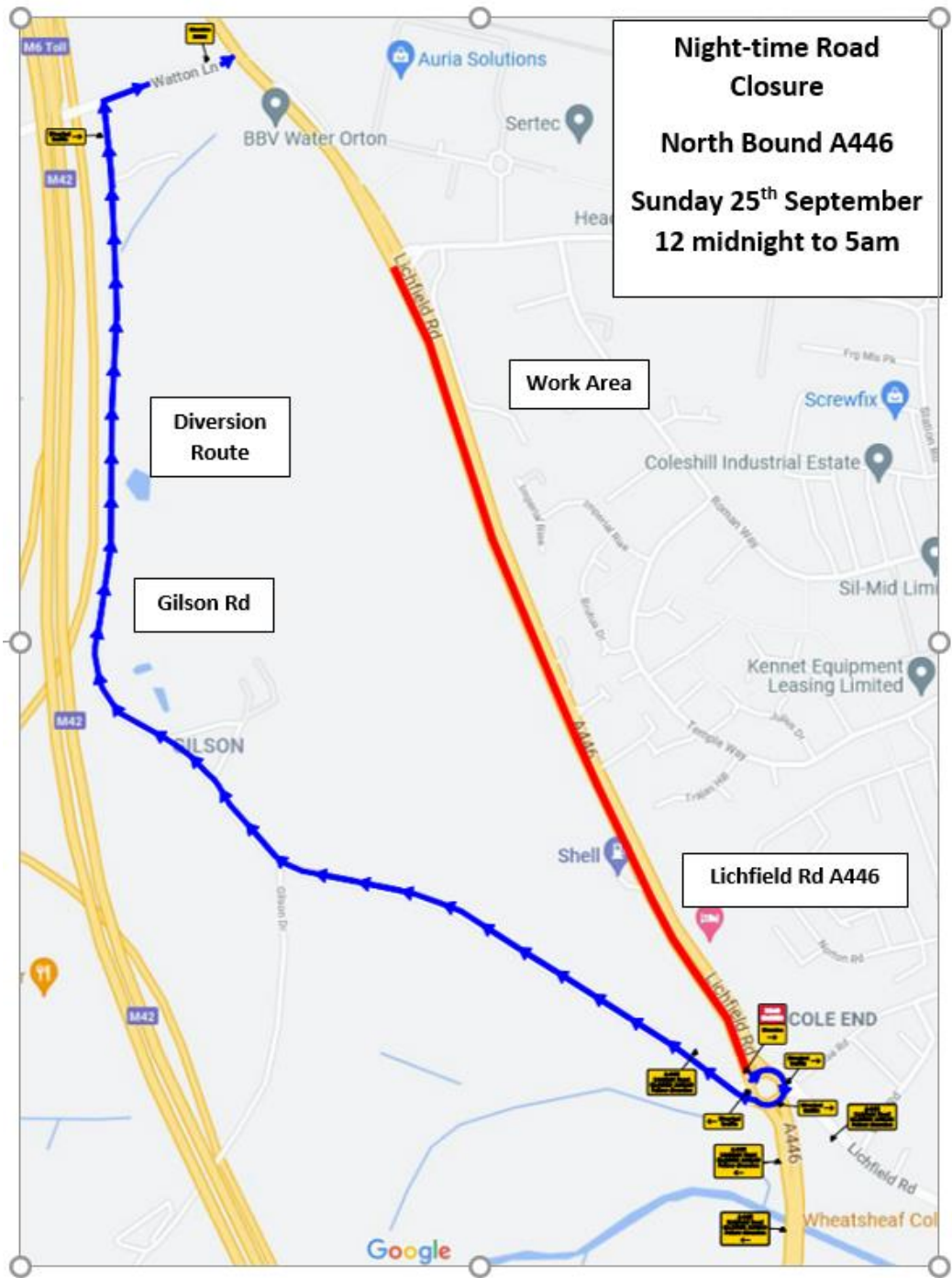
### What to expect

- There will be small increase in construction traffic during the works as well as a slight delay to your journey. Every endeavour will be made to keep disruption to a minimum.

### What we will do

- At no time will your services be interrupted. We will complete the work as quickly as possible to avoid disruption.

# HS2



# HS2

## What else is happening in your area?

[www.hs2.org.uk](http://www.hs2.org.uk)

### About our Community and Business Funds

We are offering two funds that are available to local communities and businesses between Birmingham and the West Midlands, to help with the disruption caused by our construction work. These are the Community and Environment Fund (CEF) and the Business and Local Economy Fund (BLEF).

The CEF is designed to give communities the opportunity to share in the benefits of HS2. It is an allocated fund that communities can apply for, to help to support local projects that aim to improve their local area.

The BLEF is designed to support local economies that may be disrupted by the construction of HS2. BLEF grants are for local business support organisations and local authorities to help maintain business activity in local communities.

For more information about each of these funds, including how to apply, please visit: <https://www.groundwork.org.uk/hs2funds>



### About our Community websites

The planning and construction of HS2 is a huge operation – it is currently the largest infrastructure project in Europe. It's important to us that you are kept up to date about the progress of the Project and any work that may impact you or your community. We have a series of community-focused web pages where you can find out what is happening in your local area and sign up for updates about our activities.

To find your local community website, visit: [www.hs2.org.uk/in-your-area](http://www.hs2.org.uk/in-your-area)



## Keeping you informed

We are committed to keeping you informed about work on HS2. This includes ensuring you know what to expect and when to expect it, as well as how we can help.

### Residents' Charter and Commissioner

The Residents' Charter is our promise to communicate as clearly as we possibly can with people who live along or near the HS2 route.

[www.gov.uk/government/publications/hs2-residents-charter](http://www.gov.uk/government/publications/hs2-residents-charter)

We also have an independent Residents' Commissioner whose job is to make sure we keep to the promises we make in the Charter and to keep it under constant review. Find reports at: [www.gov.uk/government/collections/hs2-ltd-residents-commissioner](http://www.gov.uk/government/collections/hs2-ltd-residents-commissioner)

You can contact the Commissioner at: [residentscommissioner@hs2.org.uk](mailto:residentscommissioner@hs2.org.uk)

### Construction Commissioner

The Construction Commissioner's role is to mediate and monitor the way in which HS2 Ltd manages and responds to construction complaints. You can contact the Construction Commissioner by emailing: [complaints@hs2-cc.org.uk](mailto:complaints@hs2-cc.org.uk)

### Property and compensation

You can find out all about HS2 and properties along the line of route by visiting:

[www.gov.uk/government/collections/hs2-property](http://www.gov.uk/government/collections/hs2-property)

Find out if you're eligible for compensation at: [www.gov.uk/claim-compensation-if-affected-by-hs2](http://www.gov.uk/claim-compensation-if-affected-by-hs2)

### Holding us to account

If you are unhappy for any reason you can make a complaint via the helpline. For more details on our complaints process, please visit our website: [www.hs2.org.uk/how-to-complain](http://www.hs2.org.uk/how-to-complain)

## Contact Us

If you have any questions about this notification of works, please get in touch.

 24/7 Freephone **08081 434 434**

 Minicom **08081 456 472**

 Email **[HS2enquiries@hs2.org.uk](mailto:HS2enquiries@hs2.org.uk)**

Write to:

**FREEPOST**

**HS2 Community Engagement**

Website **[www.hs2.org.uk](http://www.hs2.org.uk)**

To keep up to date with what is happening in your local area, visit: **[www.hs2.commonplace.is](http://www.hs2.commonplace.is)**

**Please contact us if you'd like a free copy of this document in large print, Braille, audio or easy read. You can also contact us for help and information in a different language.**

HS2 Ltd is committed to protecting personal information. If you wish to know more about how we use your personal information please see our Privacy Notice

<https://www.gov.uk/government/publications/high-speed-two-ltd-privacy-notice>

**Helpdesk reference: HS2-MW-UT-Ph1-Ar-No-N1-UT-29-25/08/2022**