



# Updated Notice of temporary road closure on Attleboro Lane

September 2022 | [www.hs2.org.uk](http://www.hs2.org.uk)

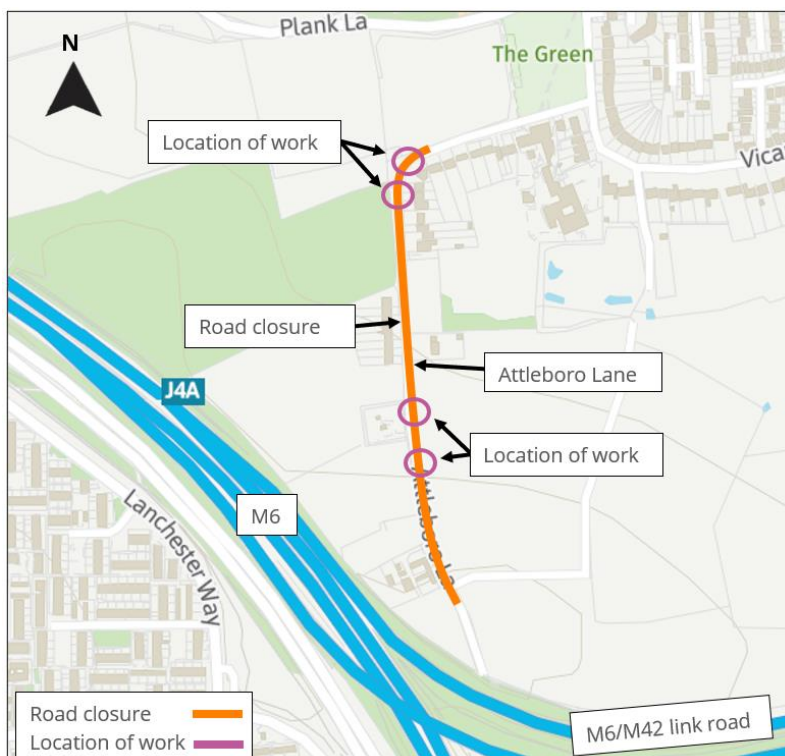
High Speed Two (HS2) is the new high speed railway for Britain. Balfour Beatty VINCI is working in partnership with HS2 Ltd to build the new high speed railway in your area.

## The work we will be doing

The work has been re-scheduled from Monday 19 September due to the Public holiday announced for that day. We will now be completing ground investigation works on Attleboro Lane on Tuesday 20 September and Wednesday 21 September 2022.

**There are four locations where the works will be undertaken, this is indicatively outlined on the map below.** To allow us to complete these works safely, we will install a temporary closure throughout the works. **The location of the closure is outlined on the map below.**

Access for residents and pedestrians will be maintained throughout. The closure will be in place from 9.30am until 3.30pm on both days but our workforce may be on site one hour before or one hour after to set up and take down equipment.



## Duration of works

- Ground investigation works to be completed on 20 and 21 September 2022.
- These works have been rescheduled from Monday 19 September to Tuesday 20 and Wednesday 21 September due to the recent announcement of the Public Holiday

## What to expect

- Temporary closure to be in place from 9.30am until 3.30pm on Attleboro Lane
- Our workforce may be on site one hour before and after to set up and take down our work equipment

## What we will do

- Keep [hs2inwarwickshire.co.uk](http://hs2inwarwickshire.co.uk) up-to-date with any changes
- Keep all sites safe and secure.

Call our HS2 Helpdesk team on **08081 434 434**

# Keeping you informed

We are committed to keeping you informed about work on HS2. This includes ensuring you know what to expect and when to expect it, as well as how we can help.

## Residents' Charter and Commissioner

The Residents' Charter is our promise to communicate as clearly as we possibly can with people who live along or near the HS2 route.  
[www.gov.uk/government/publications/hs2-residents-charter](http://www.gov.uk/government/publications/hs2-residents-charter)

We also have an independent Residents' Commissioner whose job is to make sure we keep to the promises we make in the Charter and to keep it under constant review. Find reports at:  
[www.gov.uk/government/collections/hs2-ltd-residents-commissioner](http://www.gov.uk/government/collections/hs2-ltd-residents-commissioner)

You can contact the Commissioner at:  
[residentscommissioner@hs2.org.uk](mailto:residentscommissioner@hs2.org.uk)

## Construction Commissioner

The Construction Commissioner's role is to mediate and monitor the way in which HS2 Ltd manages and responds to construction complaints. You can contact the Construction Commissioner by emailing:  
[complaints@hs2-cc.org.uk](mailto:complaints@hs2-cc.org.uk)

## Property and compensation

You can find out all about HS2 and properties along the line of route by visiting:  
[www.gov.uk/government/collections/hs2-property](http://www.gov.uk/government/collections/hs2-property)  
Find out if you're eligible for compensation at:  
[www.gov.uk/claim-compensation-if-affected-by-hs2](http://www.gov.uk/claim-compensation-if-affected-by-hs2)

## Holding us to account

If you are unhappy for any reason you can make a complaint by contacting our HS2 Helpdesk team. For more details on our complaints process, please visit our website:  
[www.hs2.org.uk/how-to-complain](http://www.hs2.org.uk/how-to-complain)

## Contact Us

Contact our HS2 Helpdesk team all day, every day of the year on:

 Freephone **08081 434 434**

 Minicom **08081 456 472**

 Email **[hs2enquiries@hs2.org.uk](mailto:hs2enquiries@hs2.org.uk)**

Write to:

**FREEPOST**

**HS2 Community Engagement**

Website **[www.hs2.org.uk](http://www.hs2.org.uk)**

To keep up to date with what is happening in your local area, visit:  
**[www.hs2inyourarea.co.uk](http://www.hs2inyourarea.co.uk)**

**Please contact us if you'd like a free copy of this document in large print, Braille, audio or easy read. You can also contact us for help and information in a different language.**

HS2 Ltd is committed to protecting personal information. If you wish to know more about how we use your personal information please see our Privacy Notice  
<https://www.gov.uk/government/publications/high-speed-two-ltd-privacy-notice>

**Reference number: HS2-MW-BBV-Ph1-Ar-No-N1-Traf-31-08/08/2022**

High Speed Two (HS2) Limited, registered in England and Wales.

Registered office: Two Snowhill, Snow Hill Queensway, Birmingham B4 6GA.

Company registration number: 06791686. VAT registration number: 888 8512 56.